

"Little White Church" display for Steam-Era

By Janet Braida

Amidst the clang and bang of old locomotives and cars at this year's Steam-Era reunion the resounding music of hymns will touch the ears. Pulled behind a car will be a mini chapel on wheels.

The small, white plywood structure has been built especially for the show by L. Vangoch and Sons of Burlington at the request of Frank Joyce, Ontario St. "I have had it in mind for two or three years now," said Mr. Joyce, "a small church on wheels was just what I ordered and I knew Mr. Vangoch was the man to make it for me. I figured if he could make something as intricate as many windmills he could make me a simple, small chapel, he said.

Mr. Joyce first saw the plan he liked outside another home along

Hwy. 6. "I was out for a drive one day and stopped in to see this small church."

Mr. Joyce then had in mind what he wanted and took his ideas to Mr. Vangoch who designed and built the chapel.

The building is made of plywood, painted white with black trim. The completed size is 12 feet by 6 feet by 15 feet. The inside area seats six with an altar at the front of the room. "All I need now is an altar cloth and a runner for the floor," said Mr. Joyce.

The floor has been covered with gold linoleum and a record player has been wired underneath the altar. The record player is set and hymns play throughout your visit.

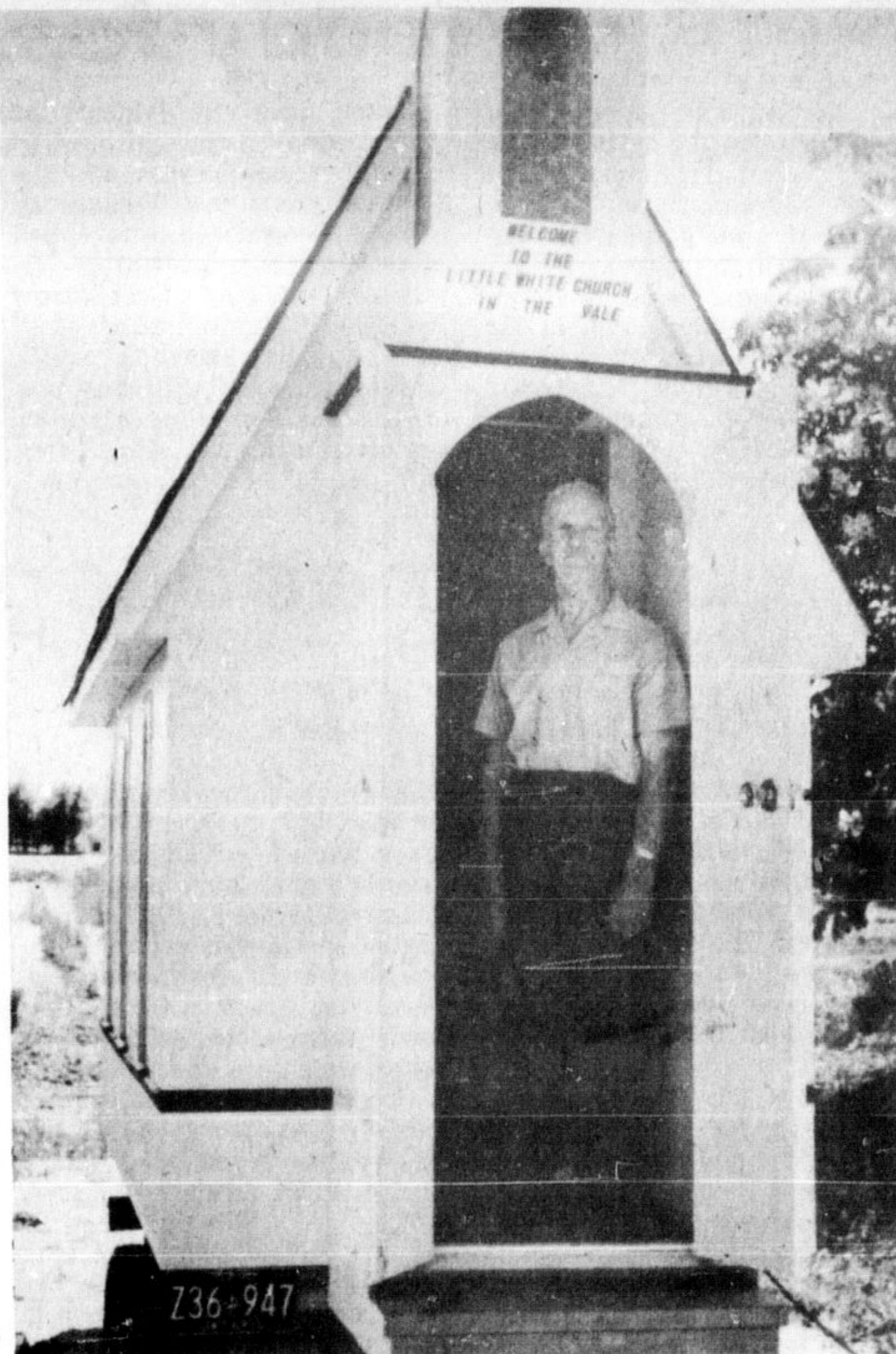
Two planters and a cross have been placed above the altar. Both were made by Mr. Vangoch. "He wanted to take a trip to Holland and by building this he earned the

extra money to do so," said Mr. Joyce. A guest book has been placed on the altar and everyone who visits "must" sign the book. A religious picture was donated to the chapel by Mrs. Edith Sharpe, Milton.

The entire project cost Mr. Joyce \$1,000 which he claims "well worth the money". "Now that I've sold the farm I've had nothing to do and the chapel will keep me busy."

The building is situated on a small trailer that was "hanging around the farm with no real use for it". An extension was added to the front of the trailer so the chapel wouldn't be too close behind the car and the tiny church was built onto the trailer.

"I had it made to put in the Steam show," said M. Joyce, although anyone who wants to see it is quite welcome. I've just recently named it "The Little White Church in the Vale."



"LITTLE WHITE CHURCH IN THE VALE" will be part of this year's Milton Steam Show. The church was especially built for Frank Joyce at a cost of \$1,000. The church was built atop a mini trailer for easy mobility. — (Staff Photo)

Will lay charges solve problems

Objections to garbage from outside the township and from conservation areas being dumped in Nassagaweya dump were aired at the council meeting Monday.

Council resolved it would prepare a by-law detailing operation of the dump and put new locks on the dump entrances after complaints from dump operator Alan Ferrier. The operator noted the

material from the conservation areas was loose and couldn't be moved back easily. Dumping from other municipalities was also reported.

Lay charges Legislation planned will allow the dump operator to lay charges for contraventions of the by-law.

The clerk noted all municipal sanitary land fill sites would be controlled by provincial

legislation by Sept. 5 it was expected.

Councillor Art Gibson complained about the dumping by the conservation authority. He noted most of those using Kelso were from out of the township.

Reeve A. MacArthur pointed out Kelso was in the township but Councillor Alan Ackman pointed out other conservation areas were not and they should not dump from them in Nassagaweya.

Council is surprised

Nassagaweya Councillors expressed surprise and shock Monday when they received Ontario Municipal Board approval for their \$2,123.87 cost of purchasing Crawford Lake by the Halton Region Conservation Authority.

Reeve A. MacArthur, a member of the Authority, expressed surprise at the approval and wondered who had applied for it. She maintained the township hadn't and recalled she was the only one on the Authority to oppose the purchase of Crawford Lake. "I was told the province would assume the cost", she recalled.

What's going on "Let's find out what's going on", Deputy Reeve G. Agnew declared.

"This is shocking", Councillor Alan Ackman maintained.

"I regard this as just going beyond their (Conservation Authority) rights. I never gave any sanction for this because I've opposed it from the beginning", Reeve MacArthur concluded.

DICK VANDENBERG
WEED CONTROL SERVICE
878-3959
COMMERCIAL - RESIDENTIAL

Will seek advice on light industry

Nassagaweya will seek advice from the Ontario Development Corporation on the advisability of light industry locating in the southern part of the township.

The action came after a closed committee discussed the matter Monday.

The resolution passed following the committee deliberations

authorized the clerk to confer with the corporation "regarding their views on the advisability of an application made by a light industry to locate in the southern part of the township. After this conference the council as a whole will visit a similar type of industry and if they are assured beyond any reasonable doubt that there is no possibility of any type of pollution and that the industry would be in the best interest of the township as a whole they will then proceed with the necessary steps to allow such industry."

Closed session

Prior to the committee discussion Councillor Alan Ackman objected to the discussion of

industry and land re-zoning in the committee of the whole.

Reeve A. MacArthur noted any decisions by council would have to be taken in open council meeting.

Councillor Ackman alluded to some previous discussion in committee of the whole about oil wastes which could have had a bad effect on the Campbellville area but the matter was not elaborated on. Mr. Ackman suggested residents should know there are pressures of this kind.

Councillor Jim Watson suggested councillors shouldn't expect a pat on the back for doing what the people expected elected officials to do.

Drop Santa parade plans

Plans for a Santa Claus parade in Milton this December have been dropped by Milton Chamber of Commerce. The Chamber had been studying a proposal to revive the popular parades which were formerly sponsored by a committee of local firefighters and Legion members, but was worried the newly-reorganized Chamber could not handle the financial expense and the long hours or organizational work necessary to carry it off successfully.

The Chamber has another idea for Christmas, however. It is investigating the costs of arranging a free bus service for local shoppers, to and from the business district. Such a service would operate in the pre-Christmas shopping period and is expected to reach all areas of the town—especially the apartment buildings and subdivisions around the perimeter of the town.

Support carnival

The Chamber has also pledged its support for a winter carnival program which may be adopted as the next fund-raising project of the Milton Community Service Clubs organization. It was originally a plan proposed by Chamber director Don Smith but the Chamber felt it was too big a project for one club and turned the idea over to the Community Service Clubs group, where it appears to have been met with a favorable response.

At the August meeting of Chamber directors, plans were made for an open meeting on Wednesday, Sept. 16 at the Charles Hotel Banquet Room when a speaker and film on the Norwich Plan of Downtown Redevelopment will be on the agenda.

Share cost to plaster

The worst is over now and with each day things look a little better and passers by become less critical of the lot on the corner of Main and Charles Sts. where the MacNabb building stood until just recently.

The road was closed off for several weeks after the Department of Labor declared the old building unfit to work near. At their meeting Milton Council engaged Suburban Plasterers Ltd. to plaster the common wall that stood between the hydro commission's building and the MacNabb building. The wall will have a grey stucco finish.

The cost of \$2,300 will be divided equally between the town and the hydro commission. Only two firms offered bids for the job of the several consulted. Mayor Brian Best told council several firms declined to even bid on the job because of the amount of scaffolding required.

Construction of the bakery, to be located at the rear of the lot, won't begin until the plastering is complete. That is estimated to take one week. However the site has been covered in fill and footings for the new building have been laid. A small park is planned for the front of the lot.

Ramblers win

Buffalo Ramblers were just too much for Halton County all stars as the Ramblers beat the all stars of the Halton County Senior League 5-2 in the annual all-star game held in Oakville Sunday. Campbellville's Garry Mitchell saw action on the mound for the all-stars.

WANTED TO BUY
Johnson's Furniture
will pay you
CASH
on the spot for good used furniture and appliances. Stoves, refrigerators, wringer washers etc.
Phone now
MILTON 878-3781.
160 MAIN ST.
Open evenings 'till 9 p.m.

Georgetown British Cars Ltd.
375 GUELPH ST. GEORGETOWN 877-5235
YOUR NEW AREA DEALER FOR
BRITISH **AUSTIN** **TRIUMPH**
LEYLAND **ROVER** **JAGUAR**
VOLVO
SALES — SERVICE — PARTS — NOW OPEN

GOOD NEWS



MILTON STORES WILL SOON BE OPEN

LONGER HOURS



Starting Next Monday Aug. 17

Most Milton Stores Will Remain Open

6 DAYS A WEEK

MONDAY TO SATURDAY

— PLUS —

THURSDAY AND FRIDAY

EVENINGS TO 9 P.M.

for the added convenience of shoppers



Your Milton Chamber of Commerce has been working toward elimination of the present inconsistency of store hours and closing days in Milton stores.

WE BELIEVE YOU, THE CUSTOMER, HAVE A RIGHT TO BE SERVED ON MONDAYS AND ON WEDNESDAY AFTERNOONS, JUST AS ON ANY OTHER BUSINESS DAY.

The Chamber of Commerce has also urged local merchants to remain open to 9 p.m. Thursday. Most retail stores will be adopting these new six days, two evenings a week hours. We sincerely regret that not all the merchants have agreed to change their hours to this system.

SHOP IN MILTON

"KEEP THE HOMETOWN ECONOMY GROWING"

Your Milton

Chamber of Commerce

MILTON DEPT. STORE

A SPECIAL SELECTION OF **MEN'S SUITS**

Sizes 36 to 44 Assorted Shades

NOW ON SALE AT **59⁸⁸ 69⁸⁸**

MEN'S SPORTS JACKETS

1/2 PRICE

SIZES 36 TO 42

REG. 24.95 TO 39.95 **NOW 12⁴⁷ to 19⁹⁷**

MEN'S STRAW HATS

Golf Hats — Fishermen's Caps

ON SALE **1/3 OFF**

NOW AT

Many non-advertised items throughout the store

WE GIVE YOU OUR BEST FOR LESS

Use the convenient Chargex plan

MILTON DEPARTMENT STORE

200 Main St. Open Friday 'til 9 P. M. Phone 878-9261

Alcan Siding

GUARANTEED 20 FOR 20 YEARS

Alcan Aluminum Siding comes in a wide variety of decorator colours. It's covered by a 20-year guarantee certificate. Compare the cost of painting to the one-time installation of Alcan Siding. You save money and you'll have a home that looks brand new for years to come. Call us for a free estimate—today.

SPECIAL OFFER

1 1/2" White, All Self-Storing Storm Door — Installed

59.95

Aluminum Doors, Soffits, Facia, Awnings, Shutters, Windows

KARL'S WOODWORKING

297 Speers Rd., Oakville 844-1316

directed to Kerr and as well as says.

AY 78-3282

39¢

59¢

IGES

5¢

9¢

RG

LB.

Y MAPLE

CON

PKG.

9¢

LB.

HUBS

8-2460