

New lift station operating

A new \$150,000 lift station near the town of Milton's Fulton St. sewage treatment plant went into full operation just before Christmas, and is functioning well according to town officials.

The station, a 24 by 30 foot brick building situated just west of the sewage plant is a maze of machinery, motors, controls and pipes and like the iceberg, has more below the surface than above.

It accepts the raw sewage that flows into the plant from the town's new trunk sewer and by means of pumps "lifts" the sewage to the plant for processing. Where the 42 inch

trunk sewer flows into the lift station is about 30 feet below ground—it had to end that far below ground to get adequate fall. The lift station lifts this sewage and pumps it a distance of 200 feet through a pair of 12 inch pipes to the sewage treatment plant.

Meanwhile smaller pumping stations at Fulton St. and Woodward St. have been closed down and will soon be dismantled. Sewage flowing from these areas of town goes directly into the large trunk sewer now, so the pumping stations no longer have to force the stuff to the sewage plant.

Eventually most of the present town will be serviced by the trunk sewer or sub trunks, making other small pumping stations also obsolete.

There are two large pumps in the lift station, both capable of handling 3,600 gallons of sewage per minute. Together, they can empty the 42 inch sewer line if it was running full—which it isn't.

Both are variable speed pumps, so they run just as fast as it is necessary to empty out a small reservoir at the base of the trunk sewer. Right now the flow is fairly low so one pump works almost continuously while the

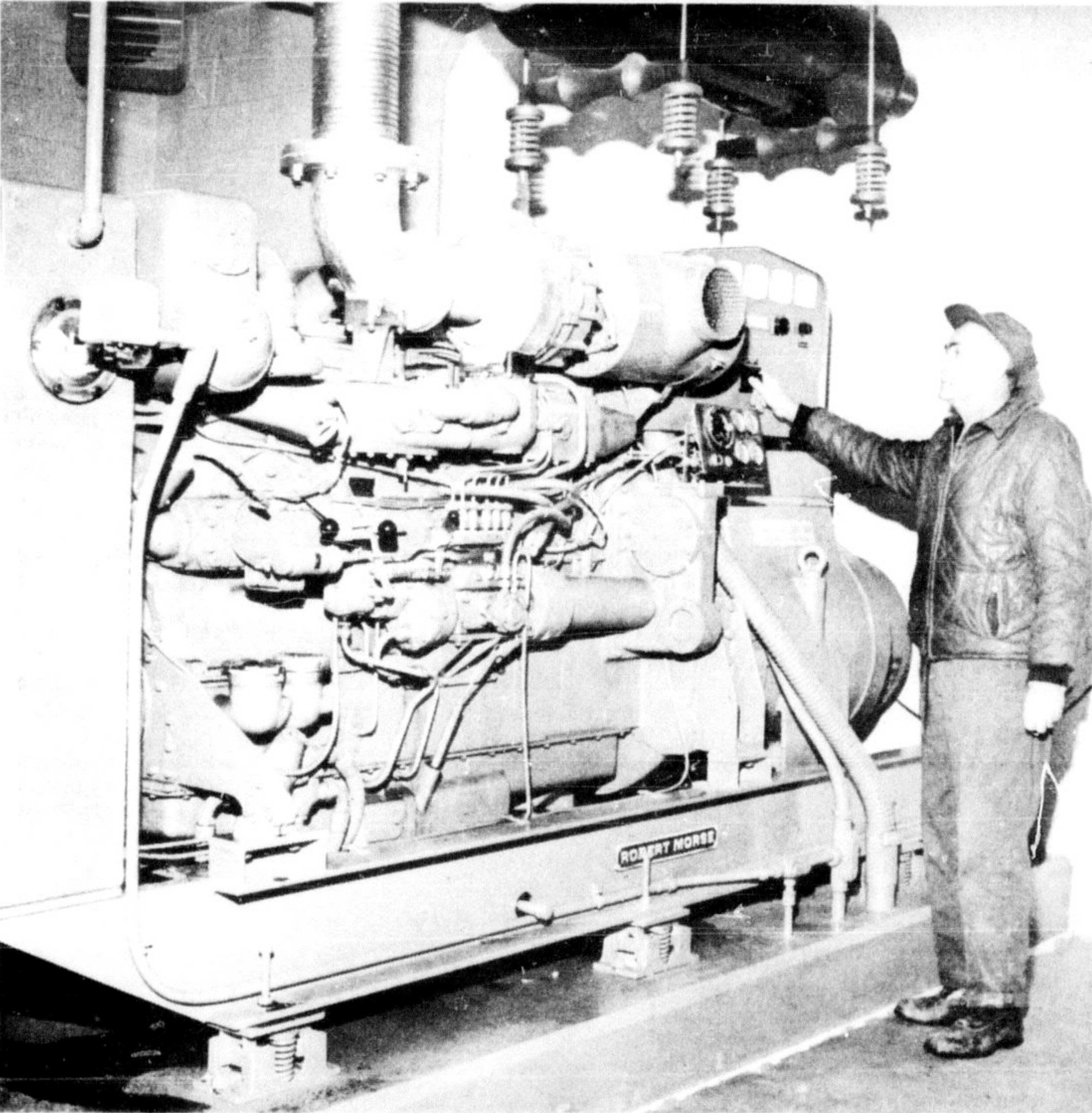
other rests. Workmen alternate the motors and pumps so they will both wear evenly.

While the pumps work away about 30 feet below the surface of the ground, they are powered by large electric motors at ground level for easier access by workmen.

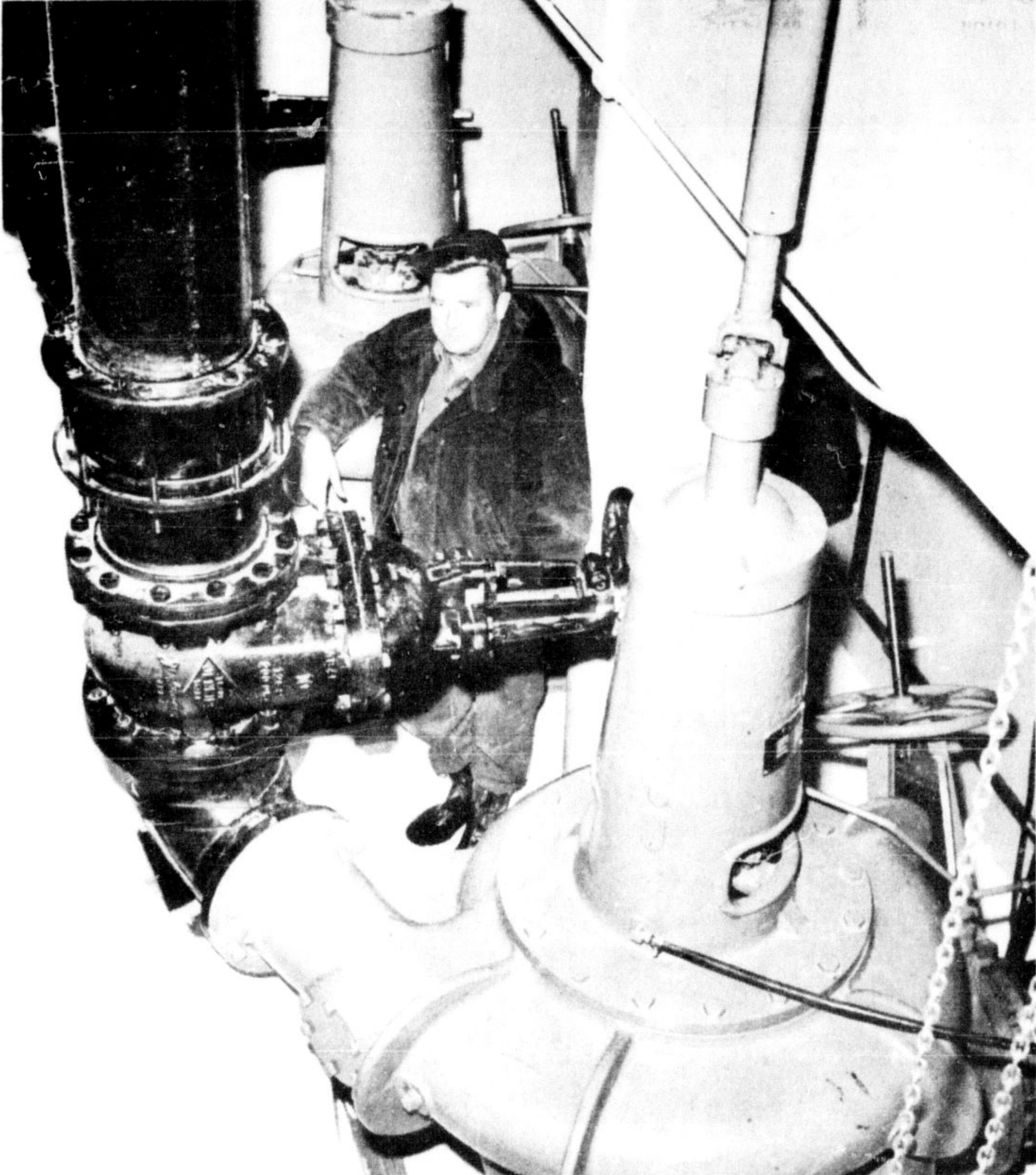
A new feature in the lift station is a 300 horsepower diesel generator, completely automatic, which provides a power source of 600 volts. This will operate the lift station, the entire sewage plant and even the town works department garage in the event of a power failure.

Prior to this there was no automatic emergency power supply. In a storm or in a power blackout workmen had to rush to the sewage plant and turn on auxiliary pumps. The new generator is completely automatic and turns itself on when the power quits, off when the power comes back on. Town works superintendent Bruce McKerr reports he can sleep a little easier at nights now, confident the generator will be able to handle the work if the power ever does go off.

The new lift station was installed as part of a \$189,966 contract that included the first leg of the town's trunk sewer, from the lift station to the pumping station at the corner of Fulton and Oak Sts. It will be operated by assistant works superintendent Wilf Penson and his staff who are in charge of the sewage treatment plant.



HUGE GENERATOR UNIT located at Milton's new lift station on Fulton St. will provide emergency power to run the lift plant, sewage treatment plant and town works department garage. Works superintendent Bruce McKerr is pictured with the 600 volt diesel unit.—(Staff Photo)



MANNING THE PUMPS at Milton's new sewage lift station is a comparatively easy task for assistant works superintendent Wilf Penson—they're completely automatic and run themselves just as fast as they have to go to keep up with the demand. The pumps "lift" the raw sewage from the end of the new trunk sewer and propel it 200 feet to the sewage treatment plant. Mr. Penson and his staff are in charge of both the sewage plant and lift station.—(Staff Photo)

Reeve goes half way on pay for committees

At Esquesing council's first meeting of the year, Monday, reeve George Currie agreed with suggestions by councillor Russell Miller and deputy-reeve Tom Hill that members of council serving on fire area committees be paid by the meeting, but did not go along with the idea that they should be paid for attending community hall board meetings.

Councillor Miller pointed out that he and councillor Wilfrid Leslie had spent about 10 meetings last year discussing the

purchase of a new fire truck and had received only \$15 remuneration, while Georgetown's representative on the Fire area committee was paid \$20 a meeting.

Council approved the following committee appointments for 1970:

Hornby Park Board—Cliff Wrigglesworth, Jim Carney and councillor Ken Marshall.

Esquesing Fire Area No. 1—Councillors Leslie and Miller.

Acton Fire Area No. 2—Deputy-reeve Tom Hill and councillor Marshall.

Milton Fire Area—Reeve George Currie.

Representative on Georgetown District Hospital Board—Councillor Leslie.

Board of Esquesing Community Hall—Councillors Leslie and Miller.

Museum Board—Reeve Currie.

Halton County Industrial Development Committee—Reeve Currie.

Credit Valley Conservation Authority representative—Deputy-reeve Hill.

Halton Region Conservation Authority representative—Reeve Currie.

Ballinacree Community Hall Board—Deputy-reeve Hill.

Committee of Adjustment—James McPhail and Denny Charles, both for three year terms.

Planning Board—J. D. Pemberton and Frederick Helson for three year terms and Robert Lawson and Samuel Penrice for two year terms.

Area executives receive award

Two area executives were recently given the Canadian Council of Christians and Jews' Humanities Award at a C.C.C.J. dinner.

G. M. Parke, public relations director of the Milton-based McKinlay Transport Co., and Lt. Col. G. Allan Burton, chairman and president of Simpson's Limited, received the award for their outstanding contributions to community activities.

Mr. Parke has served with the council for the past 15 years and is a director on the national board and also on the council's executive committee. He is a resident of Toronto and commutes to the Milton offices of McKinlay Transport.

Lt. Col. Burton is an area resident.

Four calls for ambulance

Milton District Hospital's ambulance handled just four calls during the past week and

once again, none were accident calls.

The first call came Monday, Jan. 5 with a transfer from Milton Hospital to the Hamilton Psychiatric Hospital. Two transfers were handled Wednesday and one was also handled on Friday.

TOWN OF BURLINGTON

DOG TAGS

1970 Dog Tags are available at the following locations to March 31st only:

- Pets & Gardens, Skyway Plaza, Burlington
- Coote's Store, 2090 Kilbride Road (Kilbride)
- Wilson's Hardware, 566 Plains Road East, Burlington
- Lowville Variety Store, 6179 Guelph Line (Lowville)
- Civic Administration Building, 426 Brant Street, Burlington

Dog licenses are obtainable through the mail. Enclose your notice and a cheque (payable to the Town of Burlington), and the tag will be sent to you.

After that date they may be purchased only from the License Section (first floor) of the Treasury Department, 426 Brant Street, Burlington.

G. W. Harrington, Mayor
L. B. Clark, License Administrator

January 2, 1970

price explosion

USED CARS **QUALITY**

quality plus selection

SALE PRICED

Looking for a newer car?

CHOOSE YOUR PRICE CATEGORY!

\$500.00 TO \$1,000.00 or \$34.00 to \$52.00 A MONTH			
<p>1964 FORD CUSTOM 2 DOOR Finished in ember red with matching interior. Equipped with V/8 engine, automatic transmission, power steering and radio. License No. K17809 Price \$795.00</p>	<p>1965 CHEVELLE CONVERTIBLE Finished in ember red with matching interior. Equipped with 6 cyl. engine, automatic transmission & radio. License No. K21630. Price \$995.00</p>	<p>1965 DODGE POLARA 4 DR. Finished in Glacier Blue with matching interior. Equipped with six cylinder engine, automatic trans. & radio. License No. K58253 Price \$795.00</p>	<p>1964 FORD GALAXIE CONVERTIBLE Finished in Ember Red with matching interior. Equipped with V/8 engine, automatic trans., power steering, power brakes, radio. License No. 707898 Price \$995.00</p>
\$1,000.00 to \$1,500.00 or \$52.00 to \$66.00 A MONTH			
<p>1966 CHEV. BISCAYNE 4 DR. Finished in Adobe Beige with red interior. Equipped with 6 cyl. engine & automatic transmission. License No. K20932 Price \$1095.00</p>	<p>1965 CHEVELLE MALIBU CONVERTIBLE Finished in Saddle tan with matching bucket seats. Equipped with V/8 engine, automatic trans. and radio. License No. 692092. Price \$1295.00</p>	<p>1965 OLDSMOBILE 2 DR. HARDTOP Finished in mist blue with matching interior. Equipped with V/8 engine, automatic transmission & power brakes. License No. K18895. Price \$1295.00</p>	<p>1969 FORD CUSTOM 2 DR. Equipped with V/8 Engine, automatic transmission & heavy duty equipment. Formerly an Ontario Provincial Police Car. License No. L4554 Price \$1695.00</p>
\$1,500.00 to \$2,000.00 or \$66.00 to \$88.00 A MONTH			
<p>1967 CHEVROLET IMPALA SUPER SPORT Finished in Sandalwood tan with black bucket seats and equipped with 327 V/8 engine, automatic transmission, power steering, power brakes, & radio. License No. K18730 Price \$2150.00</p>	<p>1967 CHEV. IMPALA 2 DR. H.T. Finished in Marina Blue with matching interior. Equipped with V/8 engine, automatic trans., power steering, power brakes & radio. License No. 554768 Price \$1995.00</p>	<p>1969 EPIC DELUXE 4 DR. (BRAND NEW) Equipped with big 4 cyl. engine, 4 Spd. trans., white-wall tires and finished in Peacock Blue with Black interior. Price \$1995.00</p>	<p>1968 FIREBIRD 2 DR. H.T. Finished in verdoro green with light green bucket seats. Equipped with V/8 engine, 4 Spd. transmission & radio. License No. 671733 Price \$2495.00</p>
\$2,000.00 to \$2,500.00 or \$88.00 to \$110.00 A MONTH			
<p>1969 CHEV. BISCAYNE 4 Dr. Sedan (Brand New) Finished in Honduras Maroon with black interior. Equipped with 6 cyl. engine, automatic trans., white-walls & wheel discs. Price \$2675.00</p>	<p>1969 CHEV. BISCAYNE 4 Dr. (Brand New) Finished in Fathom Green with matching interior. Equipped with V/8 engine, hydro-matic trans. fiberglass belted tires & wheel discs. Price \$2875.00</p>	<p>1969 CHEV. BISCAYNE 4 Dr. (Brand New) Finished in Dusk Blue with matching interior. Equipped with V/8 engine, hydro-matic transmission, body side mouldings, white-walls, wheel discs, front bumper guards and radio. Price \$2975.00</p>	<p>1969 FORD CUSTOM 2 DR. Equipped with V/8 Engine, automatic transmission & heavy duty equipment. Formerly an Ontario Provincial Police Car. License No. L4554 Price \$1695.00</p>

JACK RICHARDSON

CHEV-OLDS LTD.

OPEN TILL 9 P.M. MONDAY TO FRIDAY - SAT. TO 5 P.M.

6791 HIGHWAY 25, MILTON, PHONE 878-2393 or 878-3812

let your hair show its beauty

We style, cut and set your hair to bring out its true beauty. Expert hair coloring, too. Call.

Fashion Beauty Lounge

171 Main St. Phone 878-9533