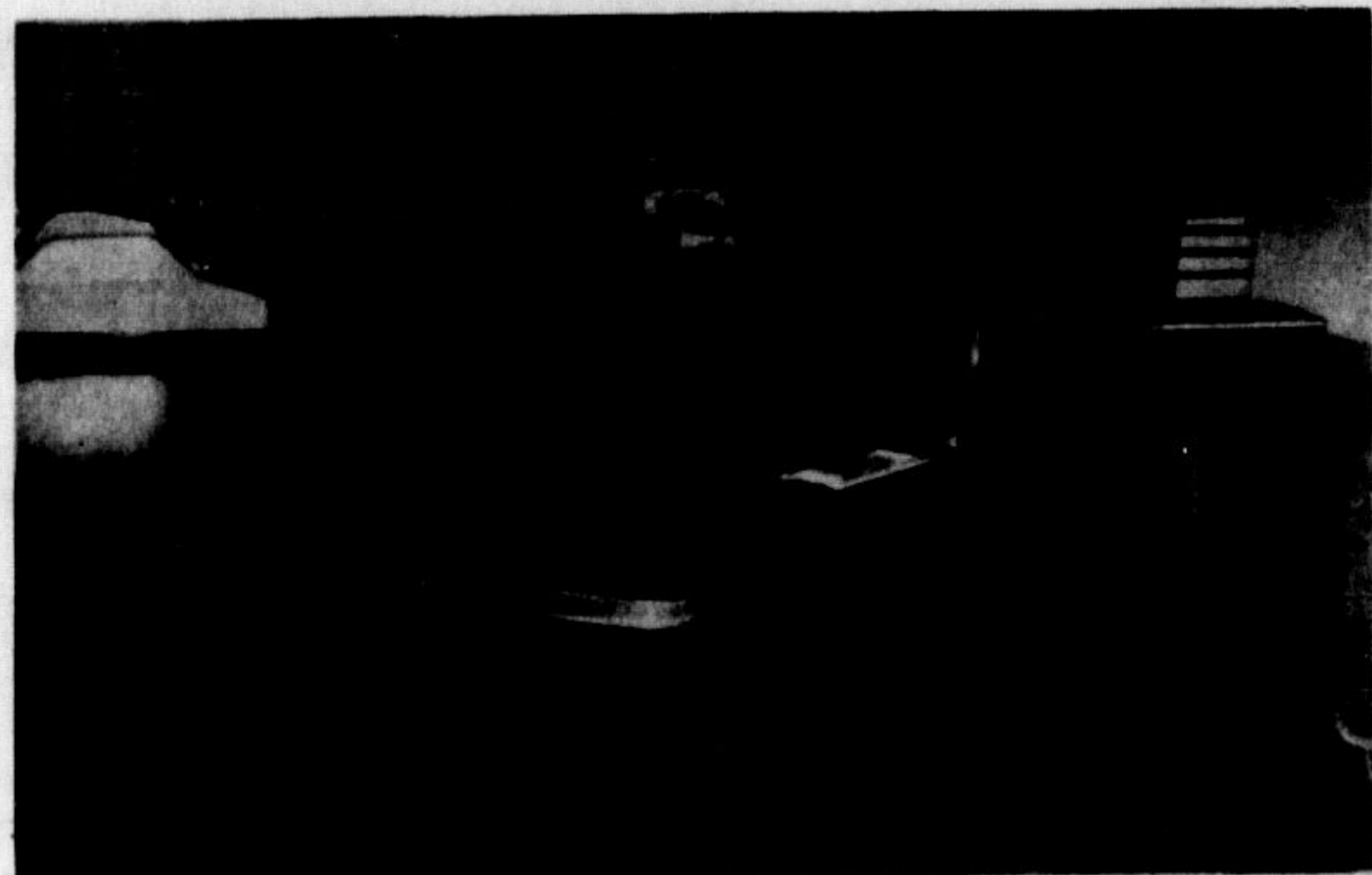


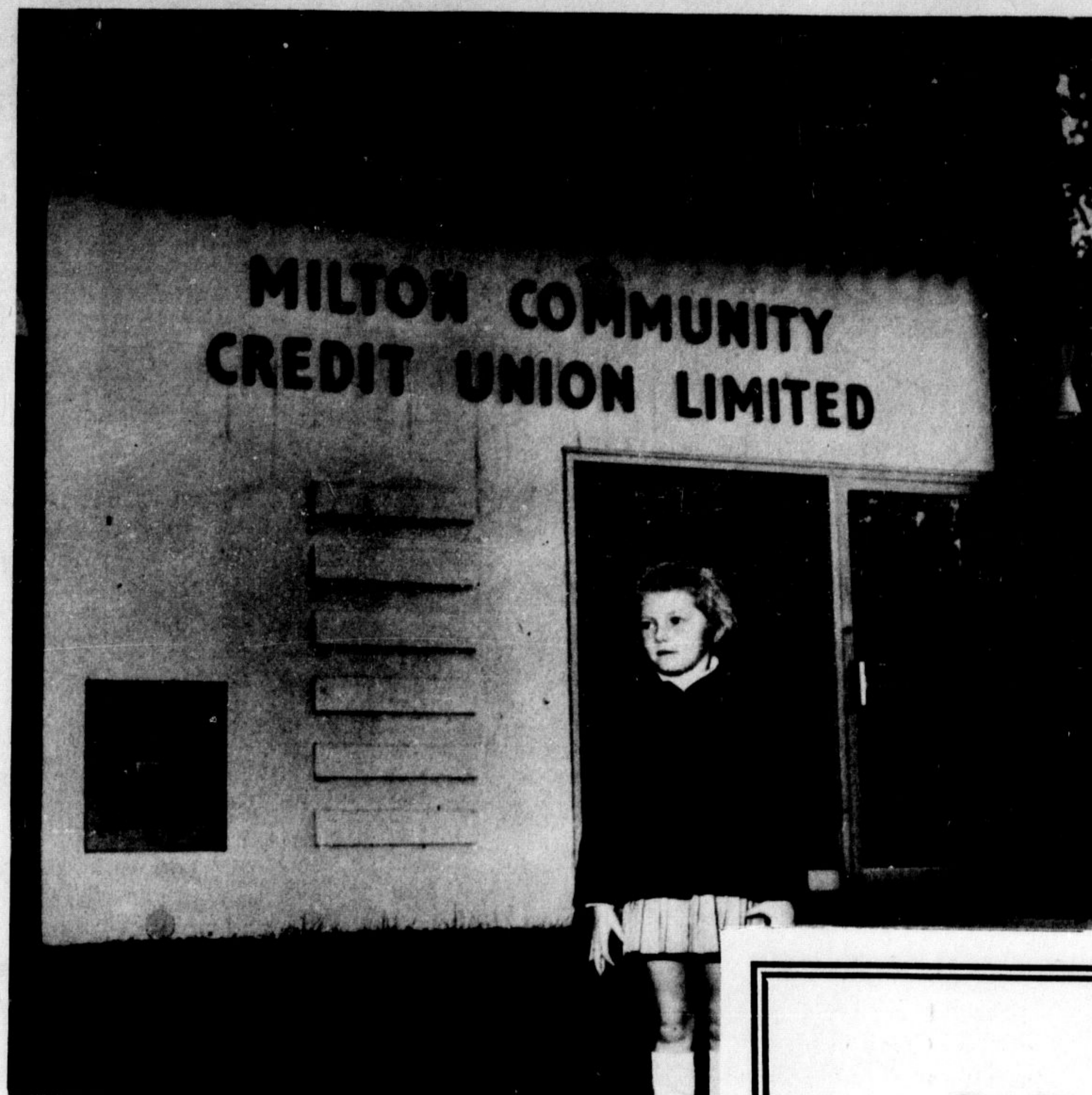
With all best wishes
on your official opening
Milton Community Credit Union

Furniture by FABIAN

MANUFACTURERS OF U-BEND
THE ONLY FURNITURE BUILT TO LAST

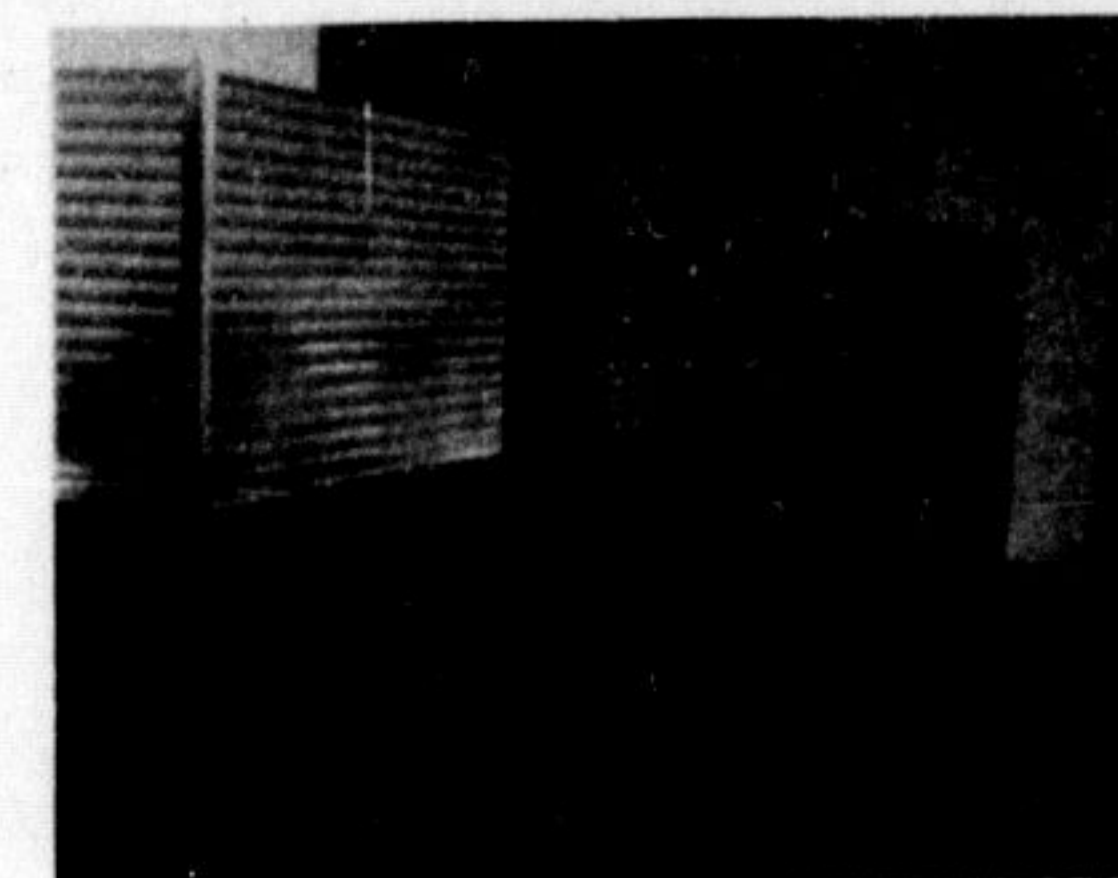


STORE IN MILTON PLAZA
FACTORY IN CLINTON, ONTARIO



Congratulations

FROM
MINO MILLWORK



CONTRACTORS FOR
MAIN COUNTER AND MILLWORK
41 MOUNTAINVIEW RD. S., GEORGETOWN 877-9771



When young Susan Channing decided to pay a visit to Milton Community Credit Union's new office the other day, she was asked by the photographer to join in a pictorial tour of the new facilities. Susan had a good reason for being there anyway—she's a member of the school children's saving account group, one of nearly 300 local children who make regular savings and draw interest at her Credit Union. Above, she's pictured outside the building with the striking name and entranceway shown in the background.

explain things to such a pretty young visitor and Mr. Frijters even let Susan sit in his chair while he reviewed the advantages of being an owner-member of the credit union.

Manager Jules Frijters has been manager of Credit Unions for many years. He got his start with Acton Community Credit Union, then managed Holy Rosary Parish Credit Union for several years until the group went community-wide and changed its name to Milton Community Credit Union Limited. He's never too busy to

S. A. FAY & SONS LIMITED

PLUMBING, HEATING, SHEET METAL

EXTENDS

CONGRATULATIONS

to

MILTON COMMUNITY CREDIT UNION

ON THE OPENING

OF THEIR NEW BUILDING

ELECTRICAL

by
FAY'S ELECTRIC

ELECTRICAL CONTRACTING
INDUSTRIAL MAINTENANCE
ELECTRIC HEATING

878-2048

7086 TOWN LINE MILTON

J. FAY

Officers

The Board of Directors of Milton Community Credit Union this year includes president Jim Langedyk, vice-president R. W. Clarke, manager J. M. Frijters, and directors Reg Latham, J. B. Reis, Frank O'Neill, Albert Schouten and Charles Stiehl.

The credit committee includes Gaston Tielemans as chairman, Peter DeGraaf and Joe Lamont. Members of the education committee are Frank O'Neill, Bob Clarke and Reg Latham. Executive members include a real "league of nations" as they represent German, Irish, English, Belgian, Dutch and Canadian origins.

The local group is one of five in Milton—others are located at P. L. Robertson, Ontario Steel, Canadian Meter and Halton County Administration Building.

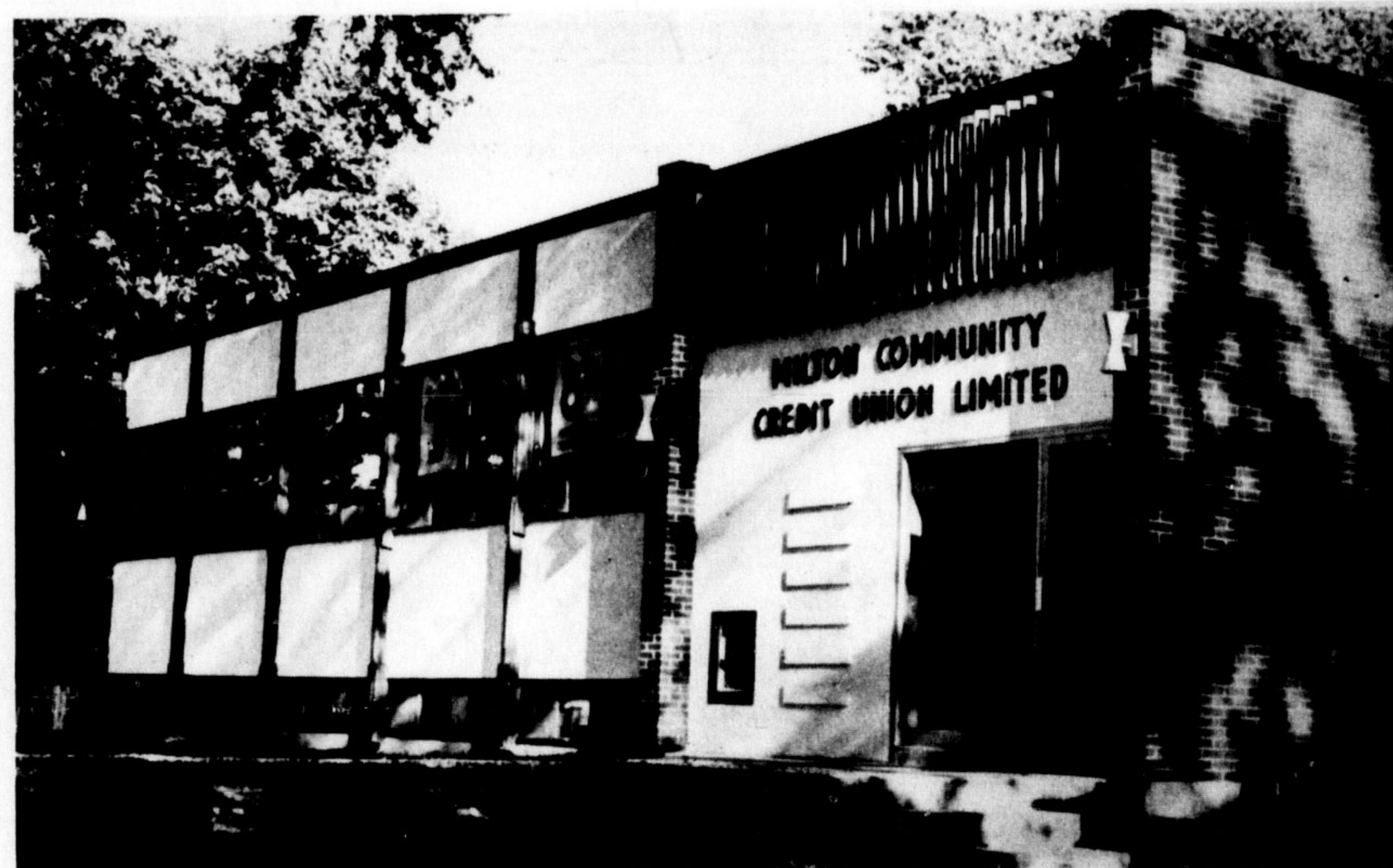
There are 1,548 credit unions in Ontario with 1,024,000 members, and across Canada there are 4,663 groups with over 5,000,000 members. The world wide organization boasts 51,429 groups with 36,000,000 total membership, and \$18,000,000,000 in total assets.

Credit Union movement was the inspiration of Friedrich Raiffeisen, who started the first credit service in Germany's famine-stricken Rhineland in 1849. The first credit union in North America was founded in Levis, P.Q. in 1900.

congratulations

TO

MILTON COMMUNITY CREDIT UNION



A.J. **MC**ARTHY **CONST.** CO. LTD.

GENERAL CONTRACTOR ON THE PROJECT

RR #3 GEORGETOWN

878-6167

Congratulations

FROM

TWIN'S WOODWORKING LTD.

Manufacturers of

"TWIN WINDOWS"

RESIDENTIAL-COMMERCIAL
WOOD-ALUMINUM-VINYL
INSUL-GLASS SLIDING DOORS

Limehouse, Ont.

Georgetown 877-9332