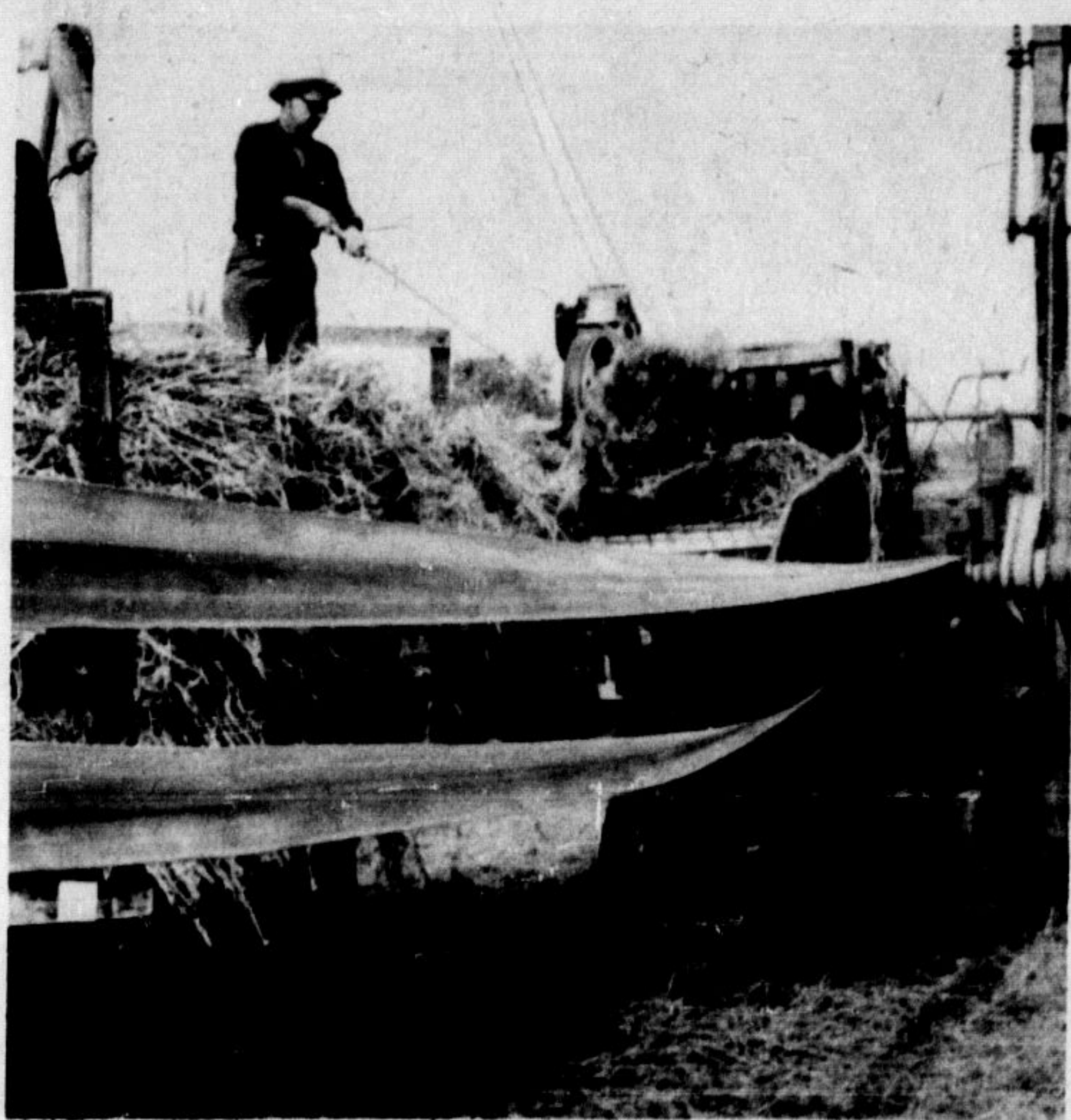
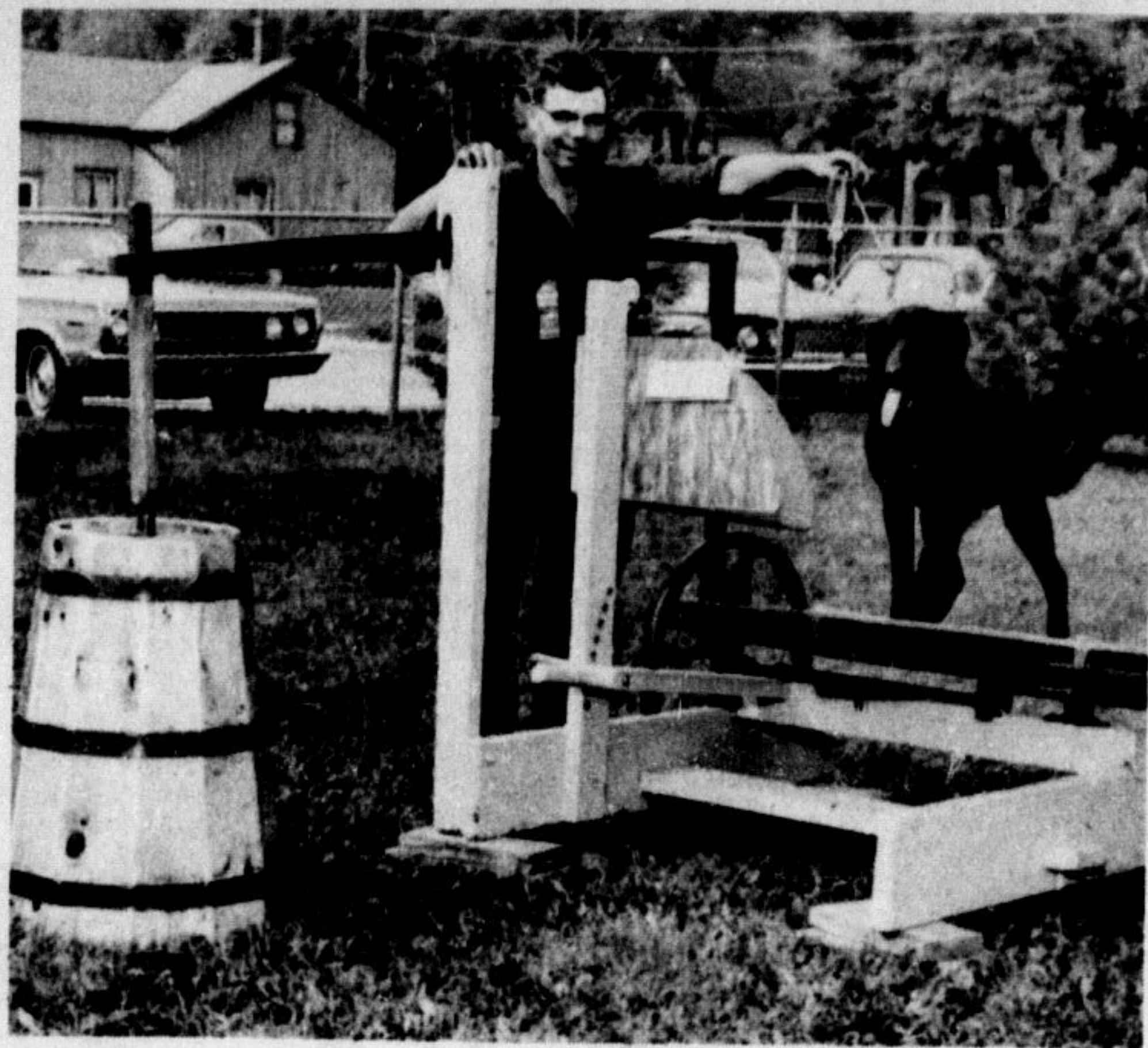


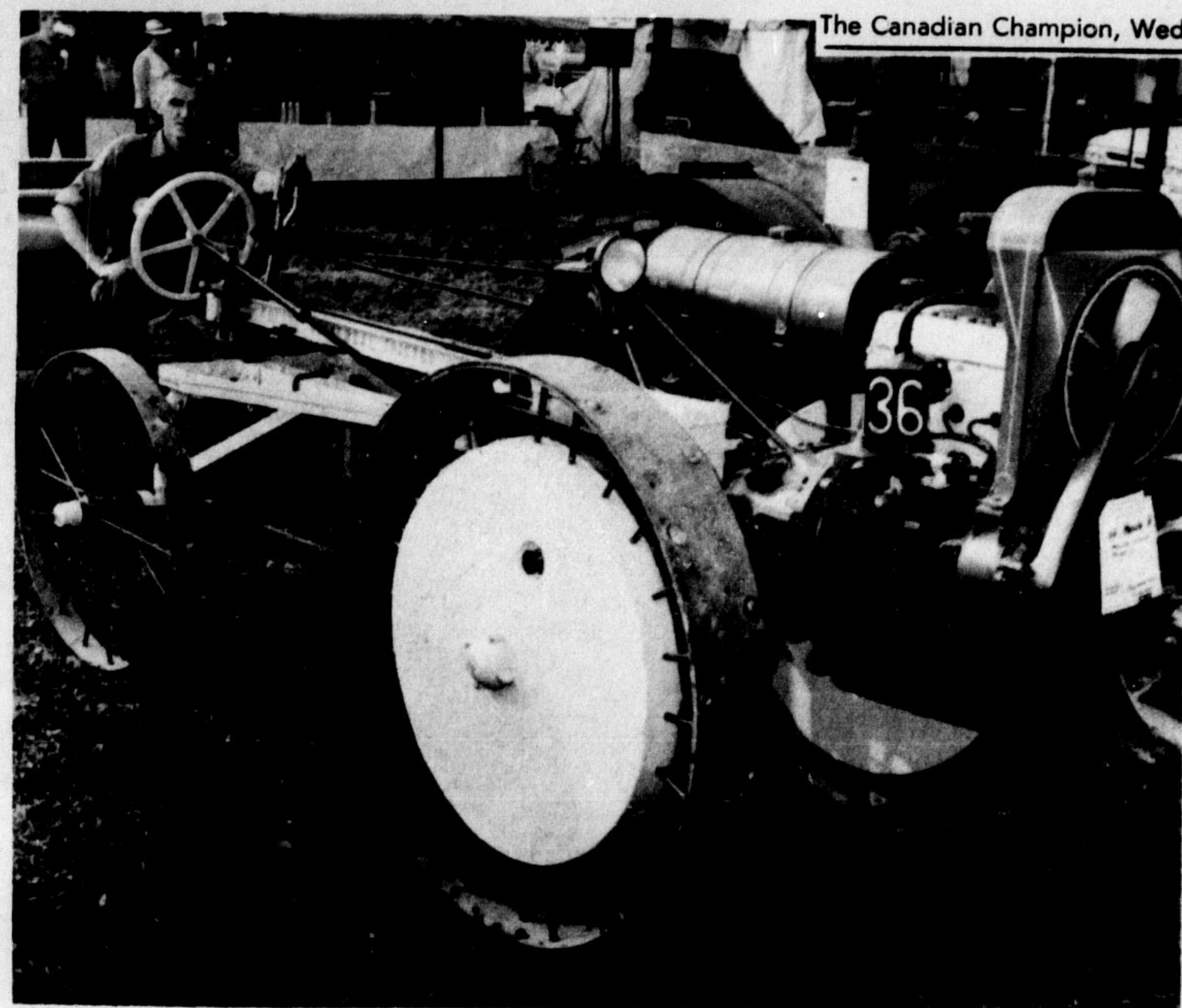
How it used to be down at the farm



Valerie...
ort. The...
eek and...
m farm

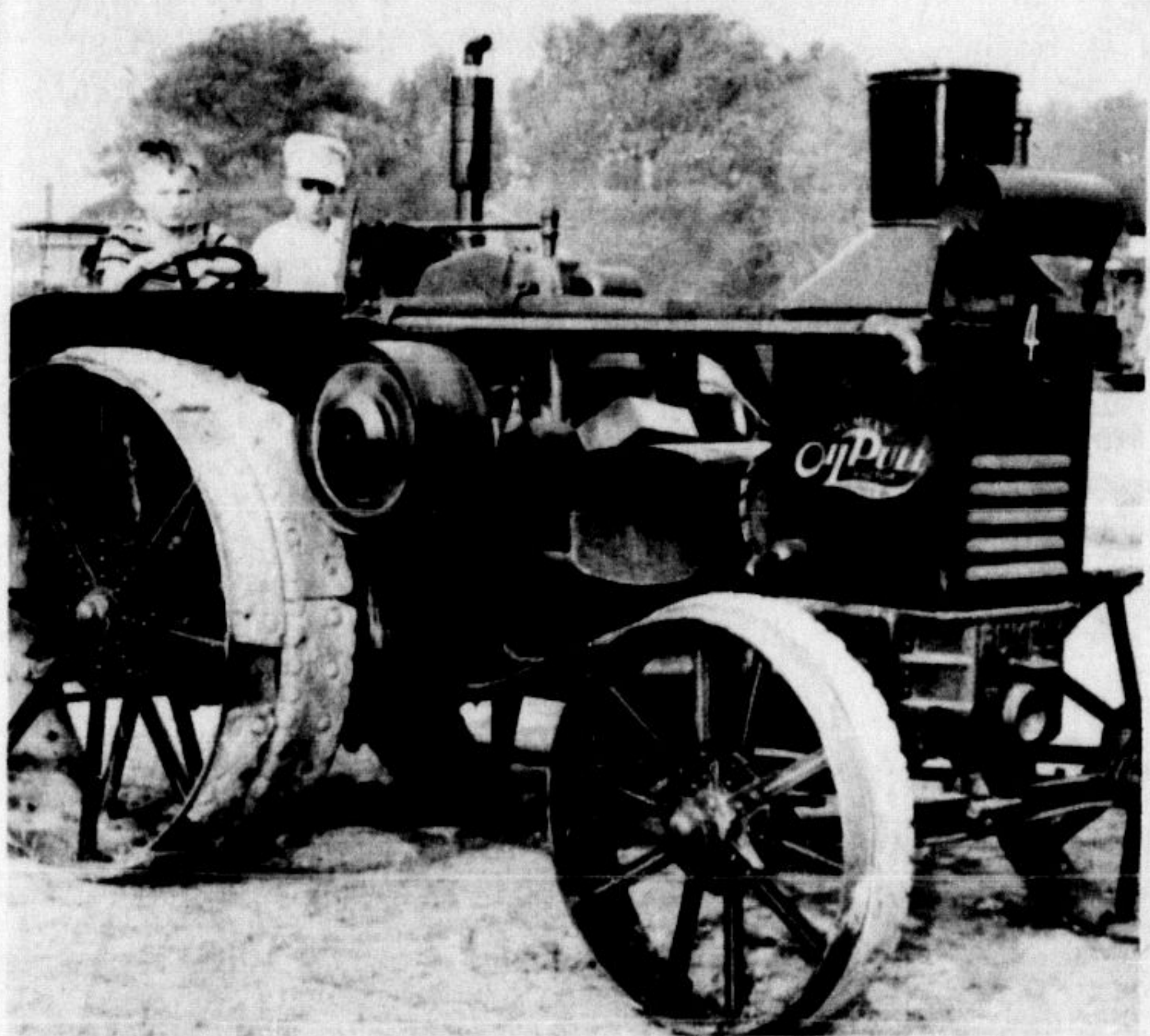


DOG-POWERED CHURN owned by Fred Ruddell, Ashgrove, was an interesting feature of the Steam-Era. Fred holds his dog Rex which loves to perform on the treadle. This exhibit won first prize at the recent Caledonia reunion.

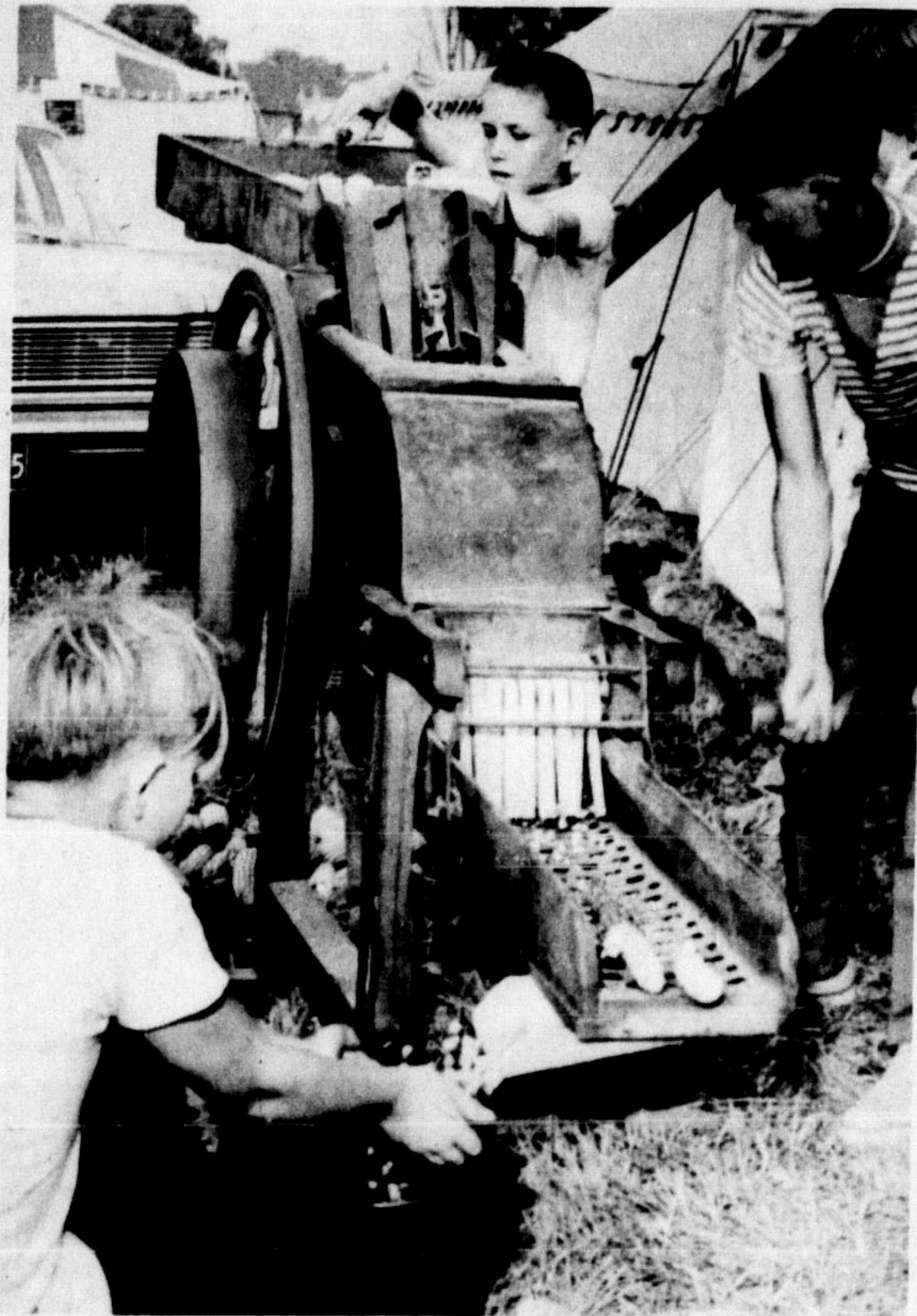


THAT'S SOME TRACTOR. Raymond Noxel of Ridgeway literally brought this antique 1918 Moline Universal tractor home in baskets, it was in such rough shape when he purchased it a year ago. He restored it to like-new condition and exhibited it at the Steam-Era.

OLD TYME THRESHING was demonstrated at the weekend reunion, and there were many willing hands when the call went out for men to pitch sheaves into the separator. It brought back a lot of nostalgia for many old threshermen to see the machines working again.



THE YOUNGER SET gets a big bang out of Steam-Era and Cedric and Ross Clarke of Milton are good examples of how the youngsters love the era of steam and antiques. They are sons of club director Bob Clarke, Milton, and love to drive his 1928 25-40 h.p. Rumely.



A CORN SHELLER owned by Ross Calder, Preston, was operating at the steam show. Youngsters proudly exhibited how it shelled the kernels from the cobs as they cranked merrily away on the handle.

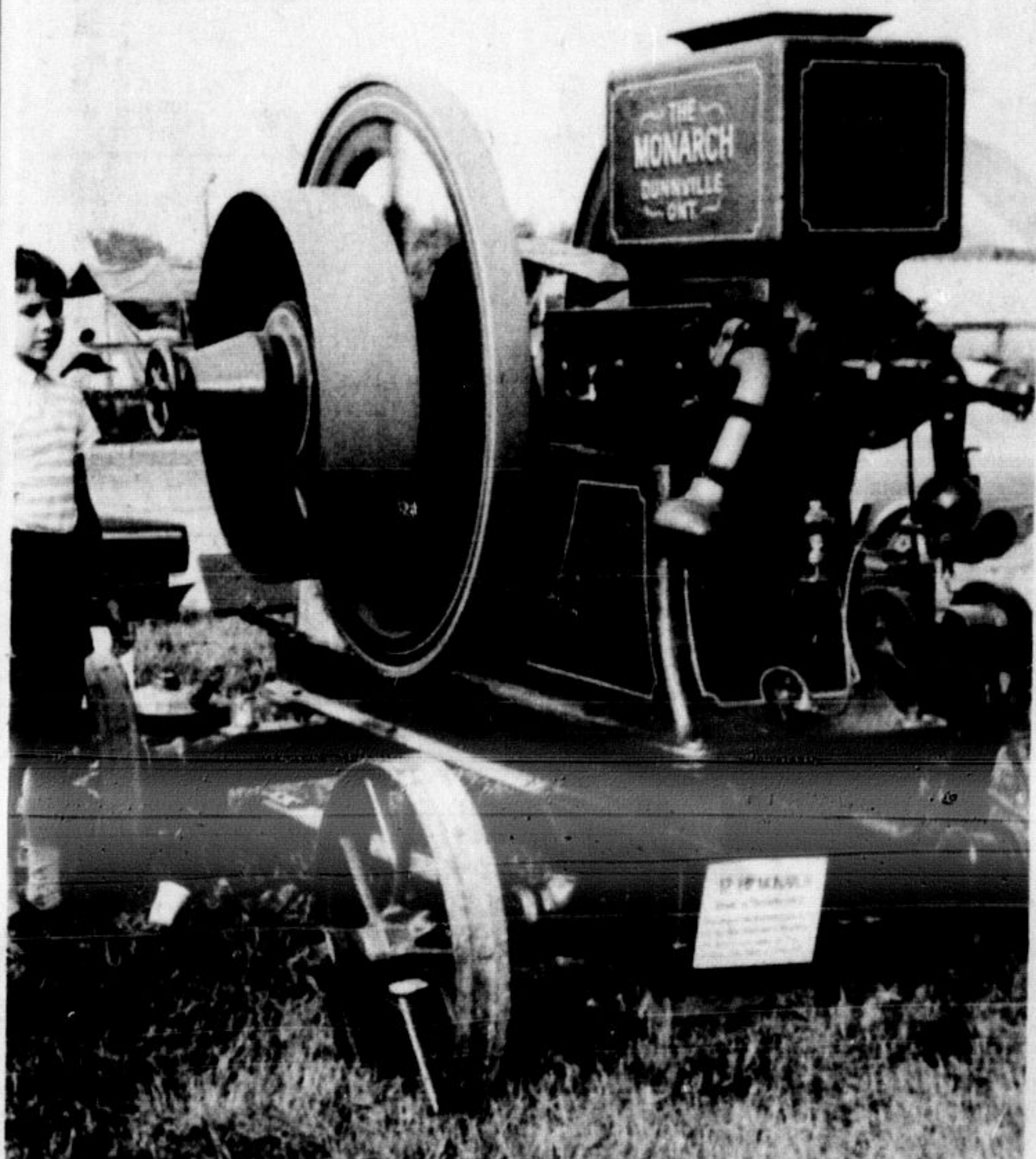


"KING" AND "BILL", William Rayner's fine pair of draught horses, pull Mr. Rayner and a bevy of young girls in old fashioned costumes at the Steam-Era. They're riding in an antique three-seater democrat buggy, new in 1900.



A COFFEE GRINDER, circa 1897, was displayed at the "Country Store" at Steam-Era by owner Elaine Schultz of Galt and her daughter Lorna.

(Staff Photos by Roy Downs)



BIG GAS ENGINE is this 12 horsepower Monarch, displayed by John Smith of Orillia at the Steam-Era show. It was purchased by his grandfather John Studiman, Branchton, in 1917 and was recently restored to exhibit at the reunion.

MILTON TELEPHONE ANSWERING SERVICE
 ☆ CONFIDENTIAL
 ☆ COURTEOUS
 ☆ PERSONALIZED
878-2020

EXCLUSIVE LADIES' WEAR

Peggy's of Milton

25 Commercial St. Milton
878-3961

Change bookmobile schedule to serve north area better

Starting this week the Oakville Public Library's bookmobile will operate on a revised schedule for a trial period of four months. A few stops previously served have been omitted and new ones have been added, in an effort to bring library service to more people in the outlying districts who at present are being denied it. The service will operate daily, Monday through Friday, on a weekly basis, and hours of operation at each stop will be from 1.30 to 5.30 and 6.30 to 8.30. Children will be able to get their books after school or during the evenings instead of having classes disrupted, and families will be able to take advantage of the evening hours to go along together. For some time there has been

such rough shape when he purchased it a year ago. He restored it to like-new condition and exhibited it at the Steam-Era. experiment will go some way towards breaching the gap until branch library service can be provided. Revised schedules are available at Central and Woodside libraries and the bookmobile, or telephone 827-3321 or 845-3405 for information.

LOW DRUG PRICES EVERYDAY
 LET US FILL YOUR NEXT PRESCRIPTION—OUR PRICES ARE RIGHT!
ELSLEY PHARMACY
 212 MAIN ST. 878-4492 MILTON

Karen's FLOWER SHOP
 878-2881
 For the Best in:
 WEDDING DESIGNS
 ANNIVERSARIES
 HOSPITAL GIFTS
 FUNERAL TRIBUTES

De'cith
 Be "IN" with "CURLS"
 Try our new champagne curl Perm guaranteed to last.
 878-2501.

FABIAN FURNITURE
HAS THE LOWEST PRICES
They Manufacture

Stopp's CLEANERS & SHIRT LAUNDERERS
 Alterations & Repairs
 for free pick-up and delivery phone: 878-2972

EAT OUT IN COMFORT in the PLEASANT ATMOSPHERE of **CARAVAN RESTAURANT**
 (Air Conditioned) phone 878-3901
 "We like to serve you."

JUNE DRAPERY is featuring EASY CARE DRESS FABRICS * ALL IN THE LATEST COLOURS AND DESIGNS TO PLEASE YOU * STOP IN SOON 878-2513

CHILDREN'S GIFTS TOYS GAMES BIG SELECTION **SMOKE & GIFT SHOP**

Milton PLAZA

One of a Kind

Get in step with the parade of happy and satisfied customers who've discovered the ease, convenience and pleasure of shopping right here in Milton Plaza...where savings and service lead the way.

OPEN EVERY DAY 9 a.m. to 6 p.m. — THURS. & FRI. to 9 p.m.

EVERY DAY LOW PRICES AT **SAV-HERE LIMITED**
 DISCOUNT PATENT MEDICINES, HEALTH AND BEAUTY AIDS.

POLLOCK SHOES
 WOMEN'S SANDALS 3.77 & 4.77
 MILTON'S FAMILY SHOE CENTRE.

RELAX
 Let our 12 lb. load WASHERS Take the Work Out of Washing
LAUNDRY EASE
 Automatic Laundry

WE CUT YOUR HAIR THE WAY YOU LIKE IT AT **NEW STYLE BARBER SHOP**

BACK TO SCHOOL
 JUST A PHONE CALL WILL GET YOU ACTION FROM **STOPP'S CLEANERS**
 FREE PICK-UP AND DELIVERY
879-2972

SAVE WAY
 FAMILY CLOTHING
 BACK-TO-SCHOOL CLOTHES ARRIVING DAILY
 SHOP EARLY FOR BEST SELECTION

were loaded WITH TOP VALUE USED CARS...
GALLINGER MOTORS
 878-2883

LOBLAWS
 50 YEARS OF QUALITY MERCHANDISE SINCERE SERVICE AND DEDICATION TO CONSUMER SATISFACTION

FIRST SEE YOUR **RCA VICTOR DEALER**

DURNAN'S TV AND APPLIANCES
 223 MARY 878-4445

- TELEVISION — Portable, Console, Color
- APPLIANCES — Washers, Freezers, Refrigerators, Dryers
- STEREO, HI-FI AND RADIOS SALES AND SERVICE

SERVICE ON ALL MAKES OF TV, STEREO, RADIO
 ANTENNAS AND TOWERS INSTALLED

MILTON PLAZA