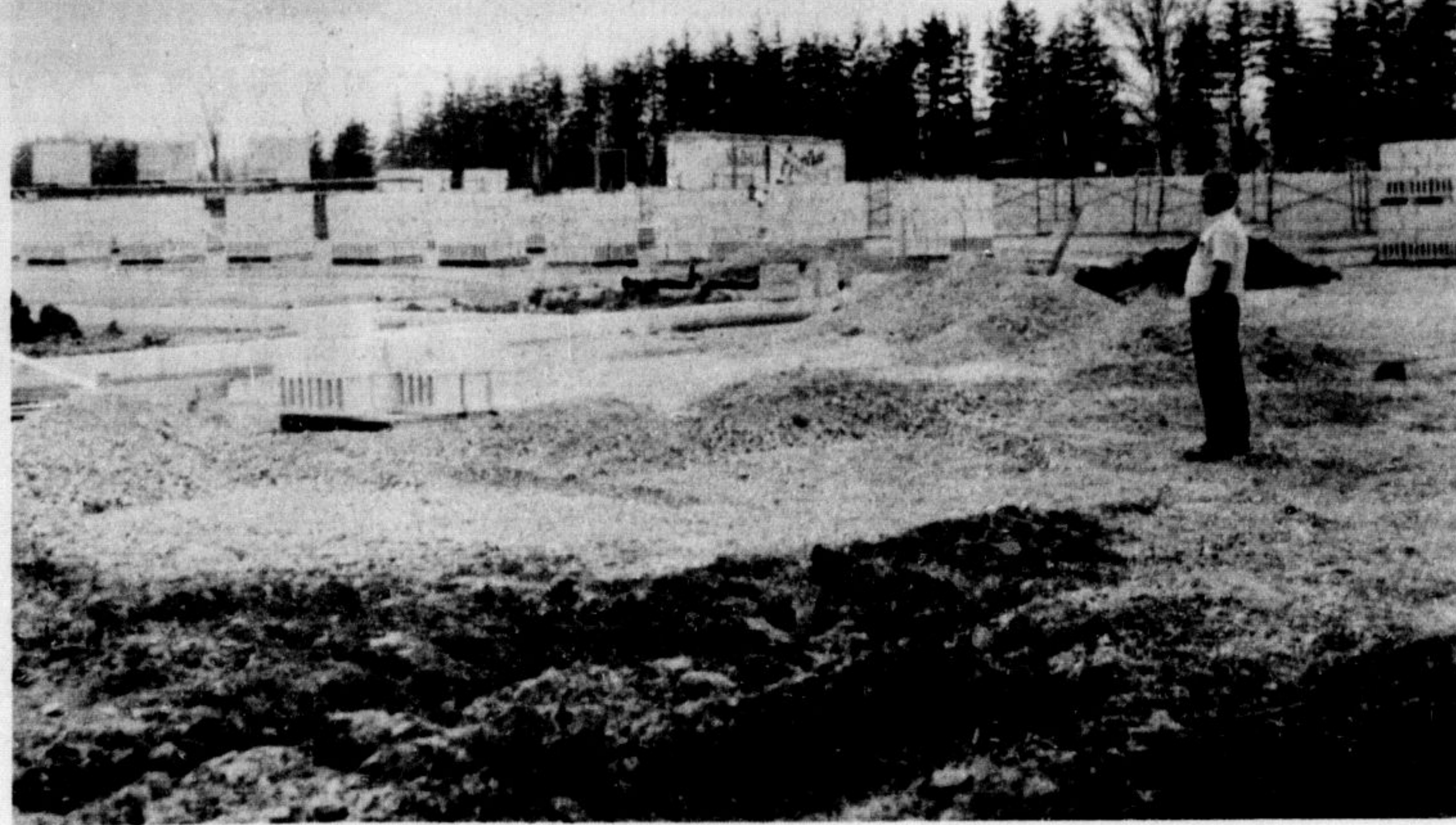
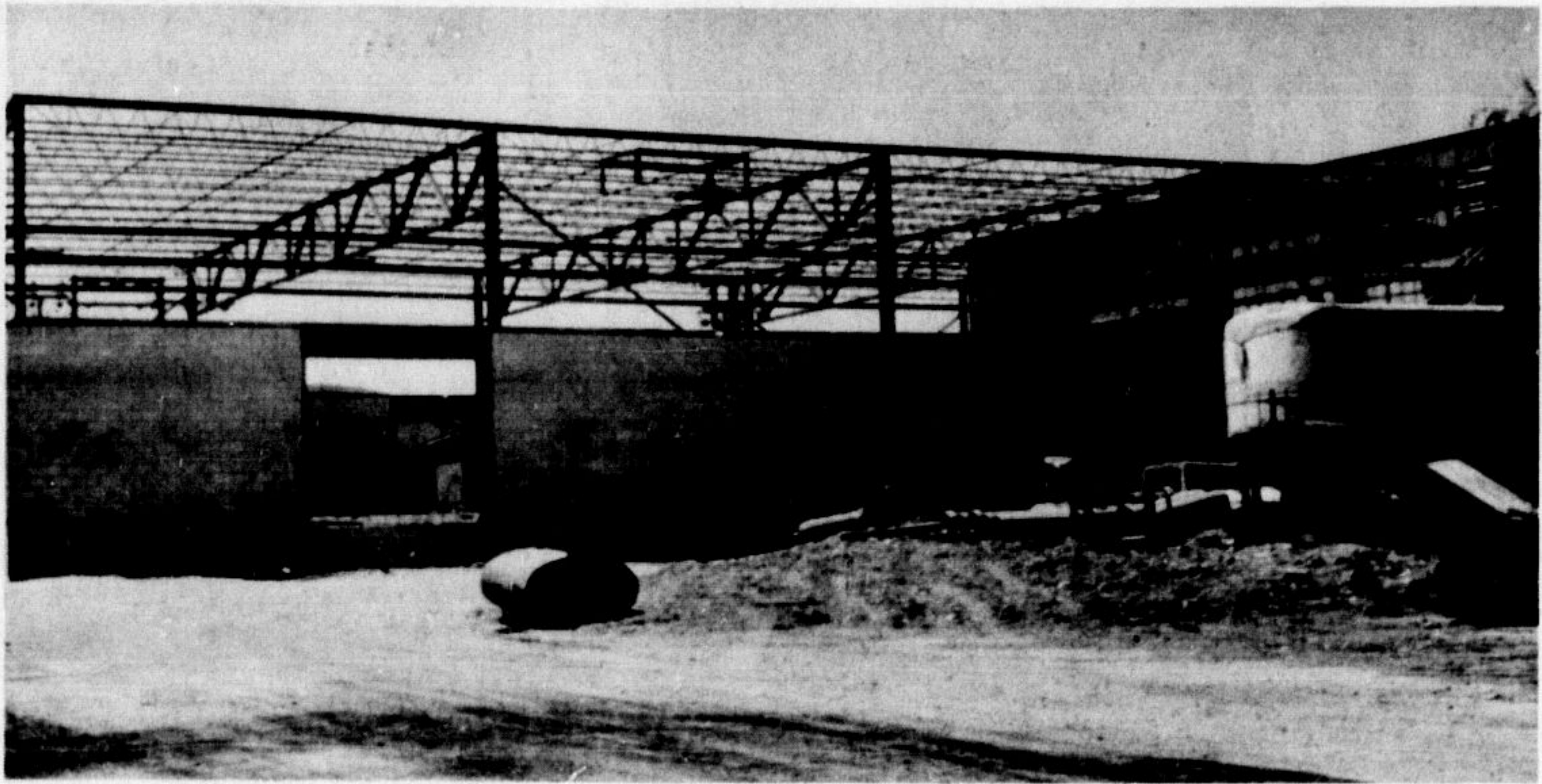


CONSTRUCTION IS BOOMING in Milton again as new homes and industrial developments open up to signal another boom period for the town. Three new homes are under construction and services are being installed for several more north of Highside Dr., and in this photo some of the new homes are taking shape.



McKINLAY TRANSPORT'S New \$750,000 head office and truck terminal are also under construction, on Highway 25 north of Highway 401. Job superintendent John Gibb is pictured at the front of the new building. The work includes the office, terminal, service shop, and a small airstrip.—(Staff Photo)



ONTARIO STEEL PRODUCTS plant, Ontario St., shares in part of the current construction boom and a large addition is being erected at the south-west corner of the present manufacturing plant. The company expects the addition will mean more jobs for Milton.

In one English city, an officer arresting a female for a traffic offense may not ask her age. He must estimate it.



The RED CROSS is People like You Helping People like You

- BRAND NAME -
Vacuum and Floor Conditioner
 USED and NEW
 For Free Home Demonstration No Obligation
CALL 878-9574

tired of tinkering?

Better see the Quality
LAWN-BOY MOWERS
 There's one just right for your mowing needs!

Whether you have a little 2 x 4 lawn or acres of grass, Lawn-Boy has the mower for your needs. You'll like the fingertip starting... fingertip handling... fingertip height adjustment... you'll like Lawn-Boy—the quiet one! Stop in... see the entire line of Lawn-Boys—there's a right Lawn-Boy for you!

Model 8228
 PRICES START AT 89.95
 Model 8228 169.95
 TRADE IN YOUR OLD LAWN MOWER ON A NEW SELF-PROPELLED MODEL AT
 By the makers of Johnson and Evinrude Outboard Motors.

Hornby Garage
 HORNBY, ONT. Phone 878-4790

Report from Ottawa
 by rud whiting

This week the Hon. Mr. Benson, Minister of Finance, introduced his second budget of this session of Parliament. It has been described as an anti-inflation budget with an expected surplus of \$250 million dollars. There are no changes in corporation or personal income tax although the 3 per cent temporary surtax on corporation and personal income tax is extended to the end of next year.

Substantial changes were announced in tariff reductions. The government undertook to reduce tariffs on a wide range of raw materials, semi-processed products, on components and final manufactured and consumer goods. These tariff reductions were planned in stages with the final implementation to be completed in the next 2½ years. The Minister announced full implementation would take place immediately instead of waiting the 2½ years. These reductions should be of importance to consumers although the main effect will be to reduce producers costs. If these tariff cuts have a serious effect on any business in Halton, I would appreciate knowing about it.

The capital cost allowances for tax purposes is to be deferred for two years on new commercial buildings in major centres of Ontario, Alberta and British Columbia. These deferrals apply to communities with a population of 50,000, or more, as of the 1966 census. This would not apply to any form of housing, industrial buildings, utilities or public institutions.

Some holding-back of commercial building in these centres will ease the pressure of demand upon construction supplies and services and should help to divert more funds and resources to essential housing, schools and municipal works and to industrial plant and factories.

Increased expenditures on the construction, equipment, operation and maintenance of airports and related airport facilities are now very large. The revenue from user charges, rents, etc. of one kind and another related to airports and air transport facilities is far less than present costs. Revised charges for these costs will be instituted, along with a tax on air line tickets.

Changes were also announced in tourist exemptions. Effective 1st January, 1970, it will be possible to have a \$25 exemption after an absence of 48 hours out of the country, on a quarterly basis instead of the present every four months. There will be a \$100. dollar exemption each calendar year for Canadians returning from abroad after an absence of a minimum of 12 days. These two

PITTSBURGH PAINTS
 \$5.95 Per Gallon and up

FLAT LATEX
 SEMI GLOSS ENAMEL
 HIGH GLOSS HOUSE PAINT

also
 LATEX ENAMEL
 REZ WOOD STAINS

Available at
UCO
 BRONTE ST. MILTON
 878-2391

JANITOR SERVICE

OFFICES
 STORES
 INDUSTRY

Window Cleaning and Janitor Service
 Call Us For Estimate
MILTON JANITOR SERVICE
 878-6388

NOTICE TO PROPERTY OWNERS
Destroy Weeds

Notice is hereby given to all persons in possession of land, in accordance with the Ontario Weed Control Act 1960, Section 3, 13 and 19 — That unless noxious weeds growing on their lands, within the MUNICIPALITY OF MILTON are destroyed by date of June 9, 1969 and throughout the season, the municipality may enter upon said lands and have the weeds destroyed, charging the costs against the land in taxes, as set out in the Act.

The co-operation of all citizens is earnestly solicited.

WILF PENSON, Weed Inspector,
 Municipality of the Town of Milton.

We make you 5½% happier.

Open a Blue Chip savings account and we'll make your day a little sunnier.

We'll sweeten your savings with our highest interest rate ever. 5½%.

Drop by. You'll smile all the way from the bank.

The Bank of Nova Scotia.