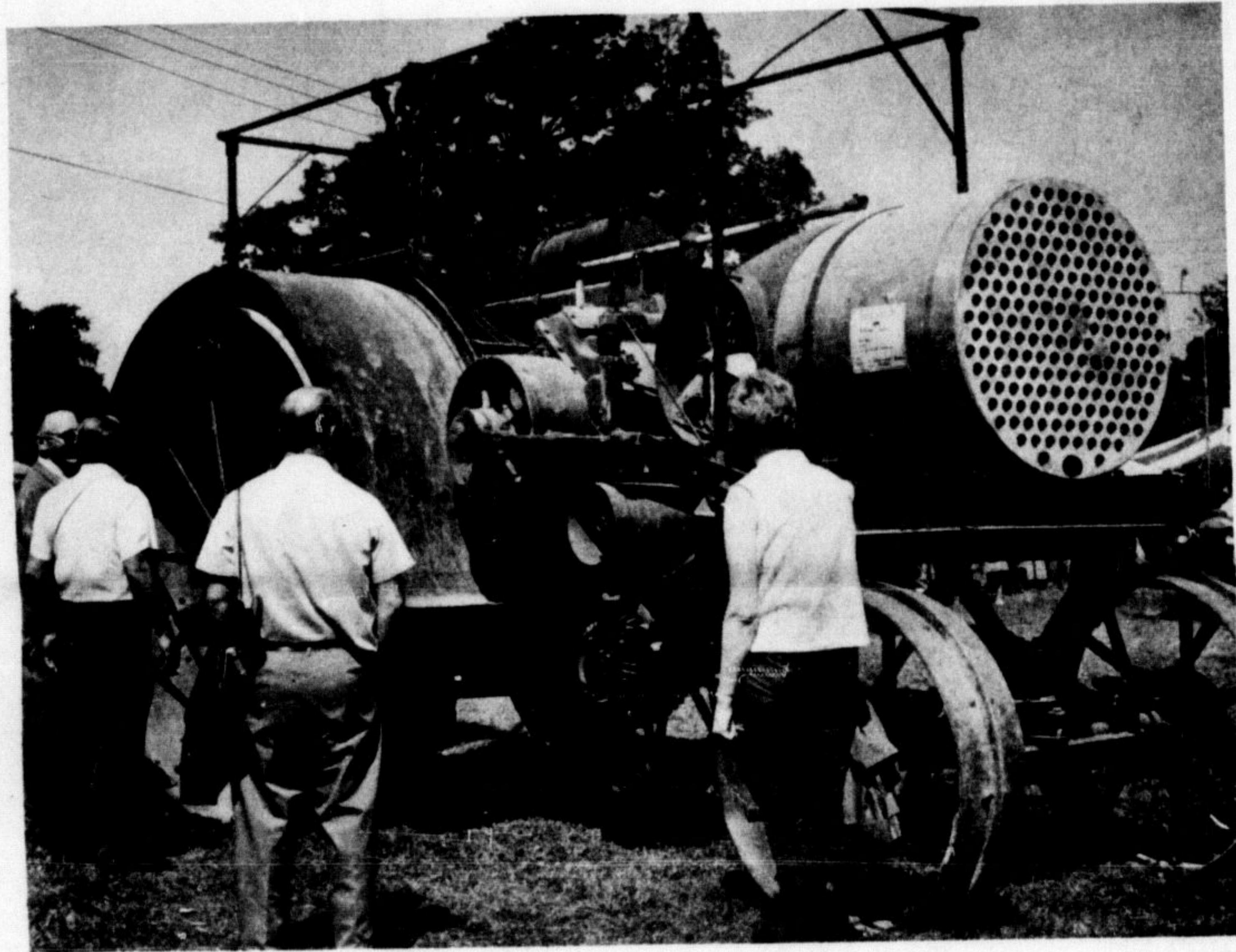


# Three kinds of power



**THREE TYPES OF POWER** were on display at the Steam-Era reunion in Milton fair grounds over labor day weekend. Horse power was ably demonstrated by the six-horse (or was it five horses and one mule) team that pulled the heavy steam calliope around the grounds. The calliope came from the Minnie Thomson museum at Stratford.



**TRACTOR POWER** was demonstrated by this huge Altman-Taylor gas tractor owned by Sherwood Hume of Milton. A 1917 model, it was rated at 30-60 h.p. and used to pull a 10-furrow plow in the fields of North Dakota, where he acquired it last year. The tractor is yet to be restored but it was on display all weekend to show visitors how these monsters look before reconditioning.



**PUTT-PUTT POWER** at the Steam-Era was supplied by these early Ford cars, just three of a total of 25 antique cars that were displayed. A visitor looks over the gleaming rads of these three, which were the latest things in transportation back in 1913, 1927 and 1929. (Staff Photos)

**IF PRICES COUNT** THROUGH A WEEKLY PRICE COMPARISON SURVEY WE OFFER THE LOWEST POSSIBLE PRICES. -- IF YOU FIND OUR PRICES DO NOT COMPARE FAVORABLY WITH OUR MAJOR COMPETITOR TELL MIKE LEDWITH, NIP MASKELL, GEORGE PENSON OR ANY OF OUR 50 LOCAL EMPLOYEES AND THE PRICE WILL BE ALTERED.

Compare at 23c — Maple Leaf Tenderflake — 1-lb. Tin

**LARD 17<sup>c</sup>**

Compare at 72c — Halton Brand — 1-lb. Fresh from Acton Creamery

**BUTTER 65<sup>c</sup>**

Compare at 97c — Chocolate — 2-lb. Tin

**QUIK 79<sup>c</sup>**

Compare at 79c — Carnation — 6 Envelopes

**INSTANT BREAKFAST 55<sup>c</sup>**

Compare at 27c — 11-oz. Bottle

**HEINZ KETCHUP 20<sup>c</sup>**

Compare at \$1.79 — Maple Leaf — 1½-lb. Tin

**CANNED HAM \$1.39**

Compare at 3 for 47c — Shirriff's — Reg. Size

**BUD PUDDINGS 10<sup>c</sup>**

Compare at 3 for 43c — Dr. Ballard's — 15-oz. Tins

**CHAMPION DOG FOOD 11<sup>c</sup>**

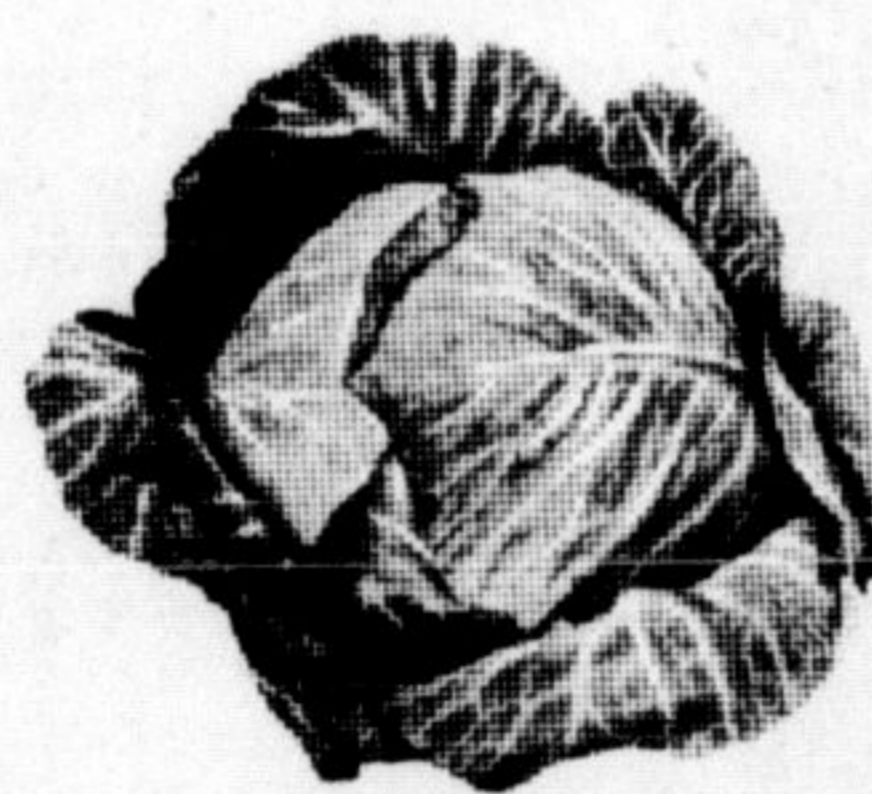
Compare at 27c — 19-oz. Tins

**HEINZ TOMATO SAUCE AND CHEESE SPAGHETTI 3 FOR 65<sup>c</sup>**

Compare at 37c — Clark's — 48-oz. Tins

**TOMATO JUICE 25<sup>c</sup>**

REPEATED BY POPULAR DEMAND



LOCAL GROWN • FRESH GREEN

**CABBAGE 10<sup>c</sup> A HEAD**

Compare at 61c — 6c Off Pack — 4-oz. Pkg.

**DREAM WHIP 47**

Compare at 29c — Reg. Size CHICKEN AND FISH

**SHAKE N' BAKE 2 FOR 49**

**LEDWITH'S**