

ny
d

ilton on the
daughter on
ber 1, at the
hospital. A little
and Kendra,
pounds 12½

tings to Larry
ill celebrate his
September 5, to
Robertson, Mrs.
Ray Archer on
to Mrs. Harry
atherine Hall on

September 8, at
a sod turning
take place at the
Hillcrest United
rove. The new
pected to be
ur months.

y greetings are
r. and Mrs. Bob
will celebrate their
nniversary on

IFT
DEA

AT BOY OR
N COLLEGE!

pecial showing
y travel - alarm
get 'em up on
eather covered
stic models that
in own case.

Javis
JEWELLERS
n St. Milton

ENTION
OME
NERS

located on the
of the street as a
which was installed
April 1, 1967..

U MAY
IFY FOR A

25
DOWANCE

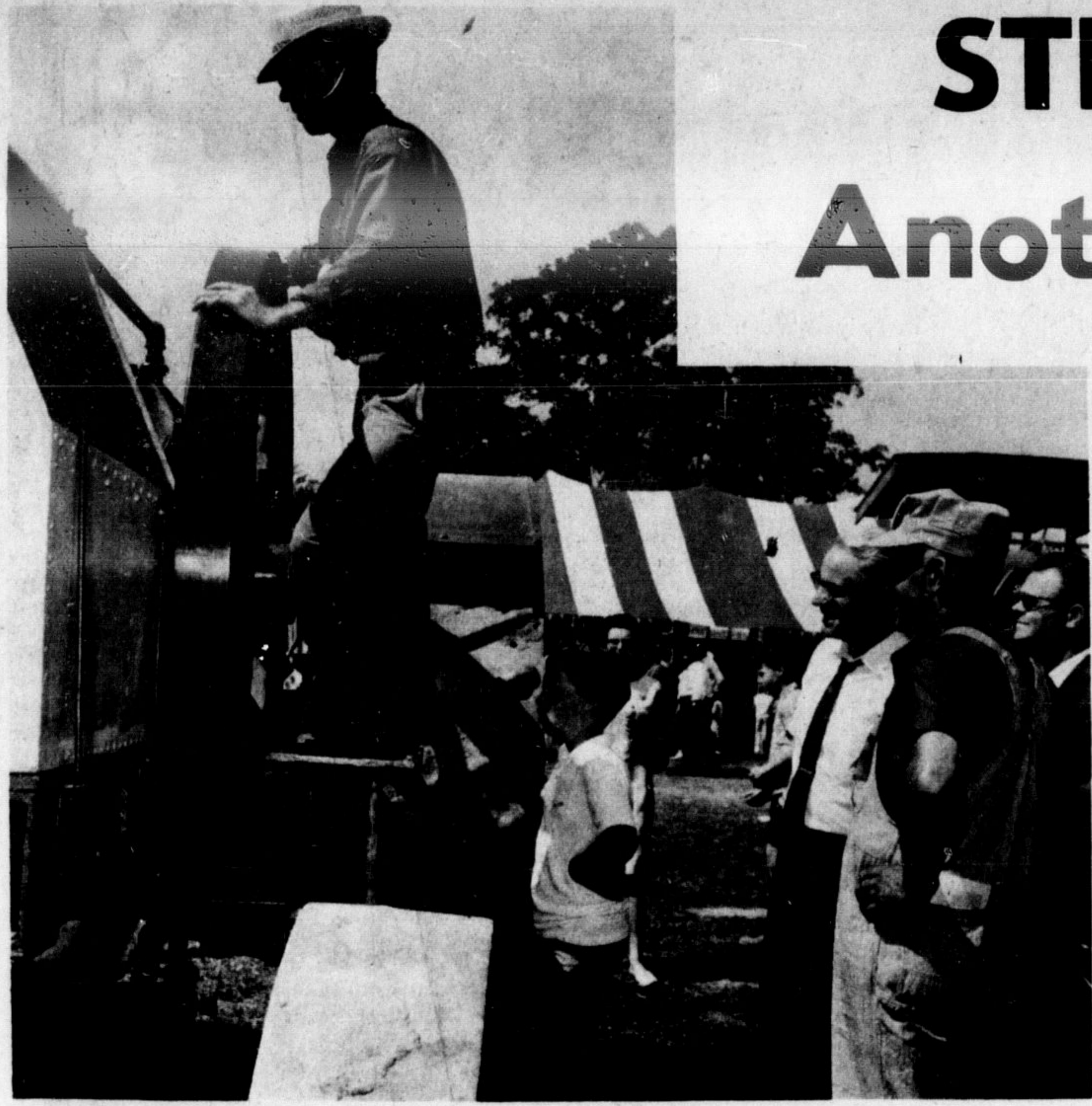
change to
g gas water
ow.

MAY ALSO
EIVE AN
DITIONAL
DOWANCE

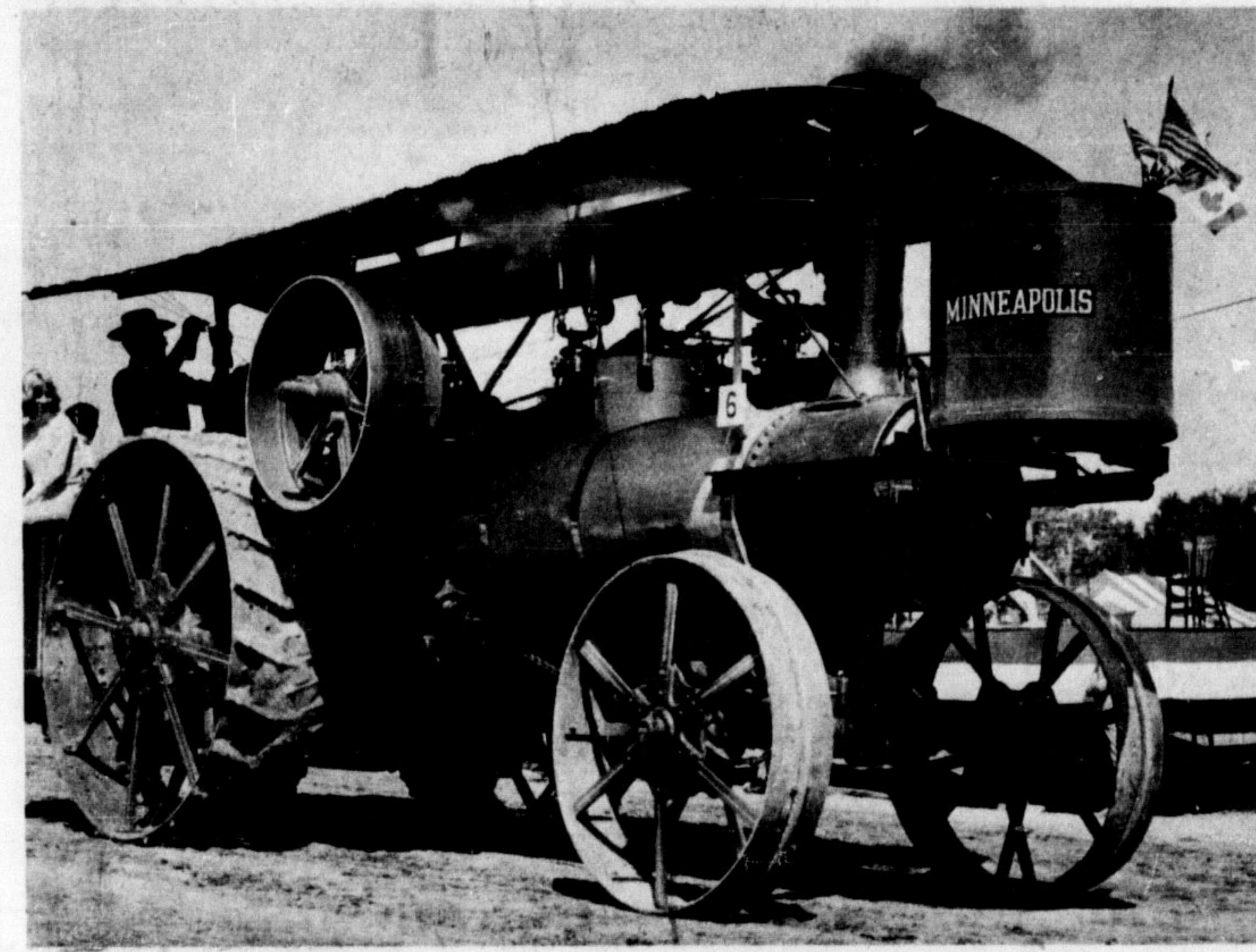
UP TO
50

u convert to a
gas central heating
at the same time you
t to automatic gas
heating. See your
ng contractor,
ment store or call
Gas.

STEAM-ERA '68... Another grand reunion



A BANG-UP SHOW from start to finish, the eighth annual reunion of Ontario Steam and Antique Preservers played to large crowds on the labor day weekend. On the left, Ontario's Minister of Agriculture William A. Stewart, accompanied by his chauffeur and steam-Era past-president Bill Shillinglaw, watches Eugene Watkins of Port Hope turning the flywheel on his one-cylinder Fairbanks Morse tractor. Mr. Stewart officially opened Steam-Era '68. On the right, the steam-powered calliope whistles and toots its way down Main St. during Saturday's parade. (Staff Photos)



A BIG MINNEAPOLIS traction engine lumbers down the race track during the weekend steam reunion. This one was owned and restored by the Webbs from Beamsville.

The Canadian Champion

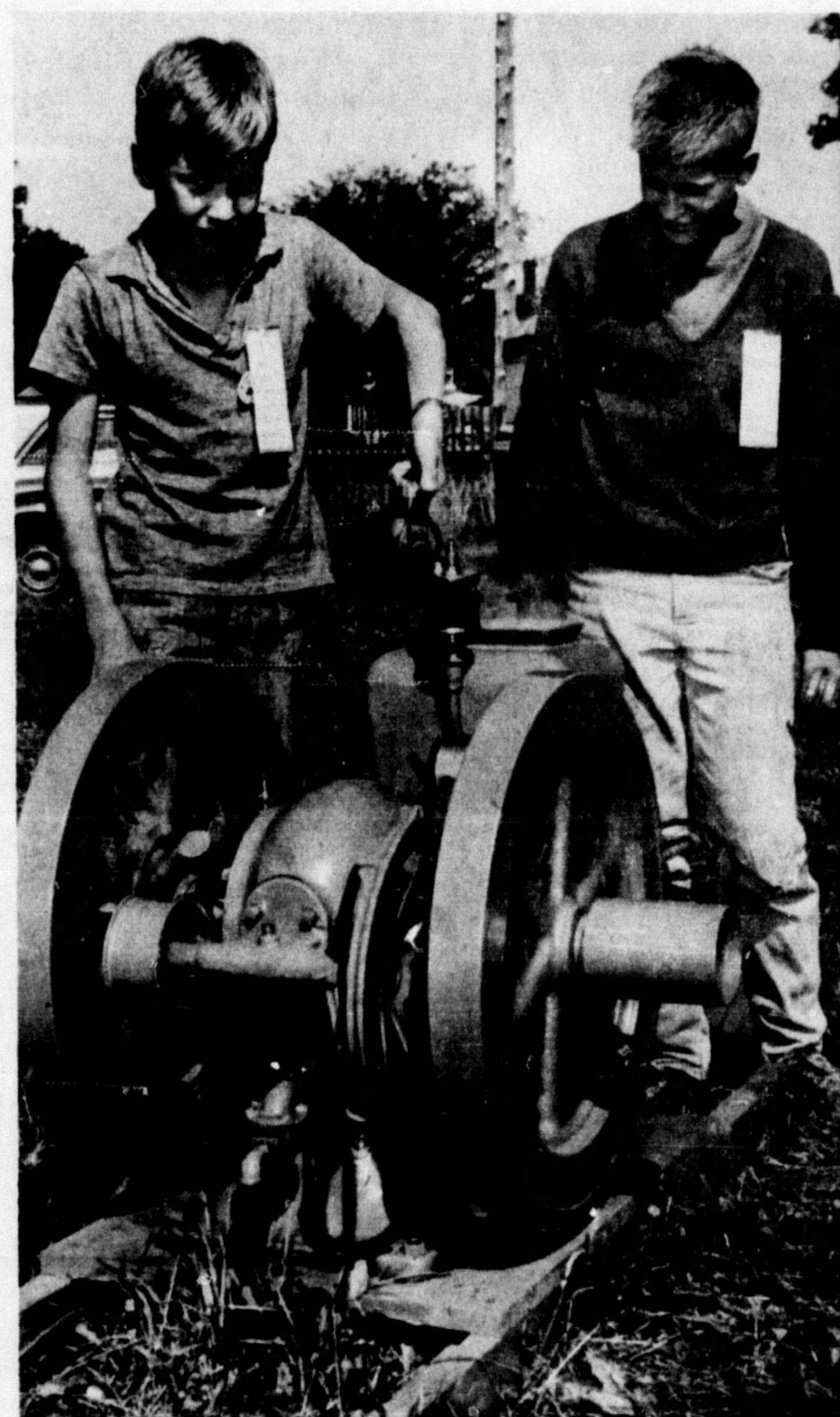
Second Section.

MILTON, ONTARIO, WEDNESDAY, SEPTEMBER 4, 1968

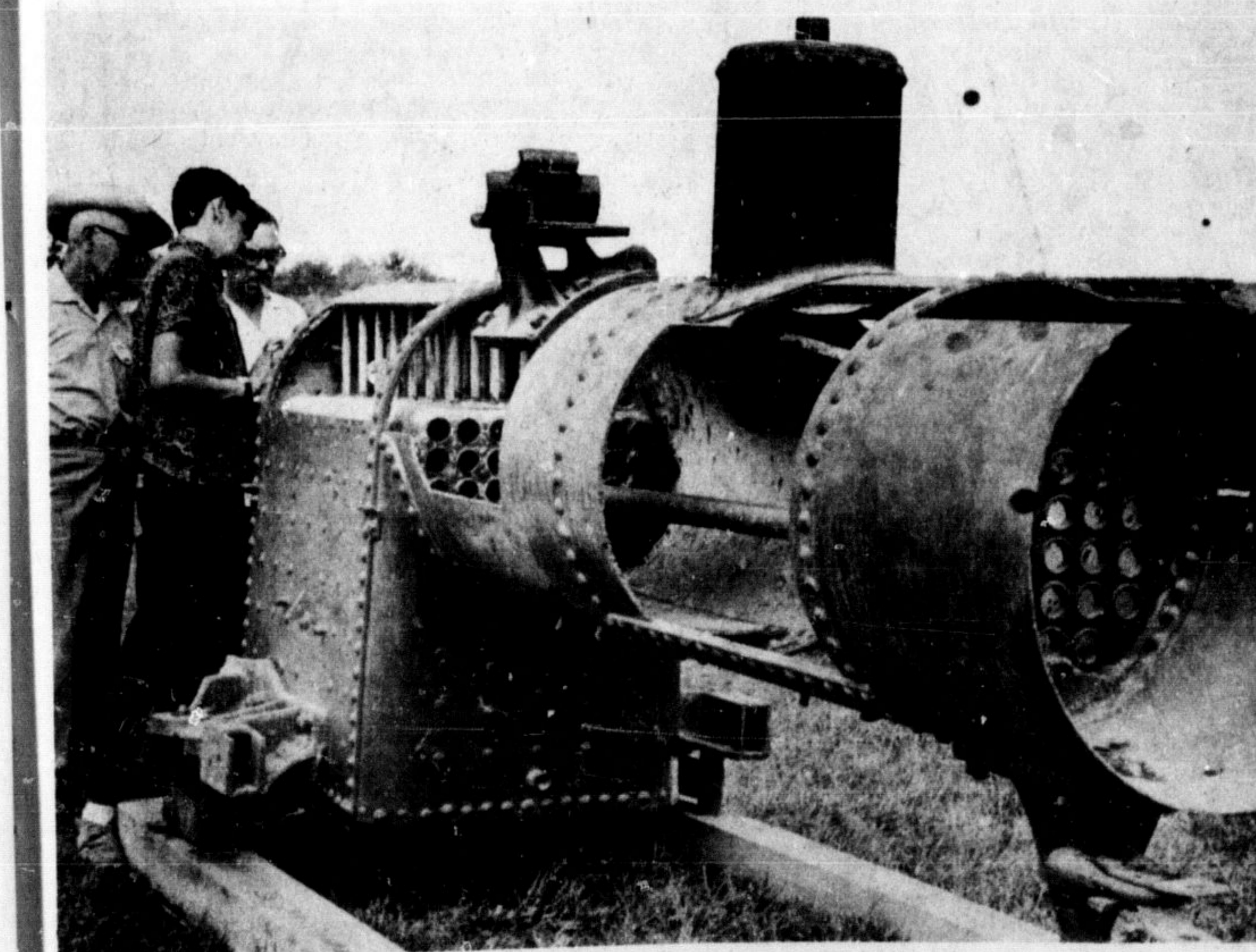
Vol. 109.—No. 18.



A STEAM LOCOMOTIVE done to scale treated adults and youngsters to a ride during the Steam-Era. Owned by Gordon Smith of Orillia, it's a scale-size replica of the Mariposa Special of 1897.



DALE BRIGDEN of Georgetown, co-owner with his brother Ross of a 2½ h.p. Mogul gas engine, oils it up for the steam reunion while friend Phillip Johnston looks on. (Staff Photo)



A CUT-AWAY BOILER was on display during the weekend, to demonstrate the principle of steam power to visitors. (Staff Photos)

3,500 HOURS of toil produced the one-quarter scale model of a Waterloo steam traction engine, which owner Charles Mank of Islington estimates to be worth \$5,000 to him. He worked for the Waterloo company building full-size models during the 1920's, and over the past four years has devoted most of his spare time to making this operating model. (Staff Photo)



SATURDAY'S CROWD was better than the same day last year. Here part of the mob watches the 4 p.m. parade at the grandstand. (Staff Photo)