

Start of \$682,500 project

Let trunk sewer tenders

The \$189,966 bid of Clairson Construction Co. Ltd. of Weston was accepted Monday by Milton Council for construction of a new pumping station at the treatment plant and the first length of a trunk sewer to Oak St.

Engineer Ken Hyde reviewed the trunk sewer project with council, planning board, town officials and consultants. He pointed out the sewer is designed to finally extend north to serve land to Highway 401 with sub trunks extending to serve land recently annexed to the east. The route of the line roughly parallels the course of the stream through town and will eventually eliminate the Woodward Ave. pumping station when it extends that far.

Total estimated cost of the trunk sewer program from the treatment plant to the area north of the base line road, including sub trunks at George St. and on the Base Line Road, is \$682,500. "Can we charge the capital cost to the annexed area without charging it over the present town?" Councillor P. Barr questioned. The engineer pointed out costs might be recovered as the land develops through a capital contribution program.

Solicitor D. A. McConachie emphasized it was not desirable to split the municipality. Some of the costs can be recaptured but he pointed out few if any municipalities levy a capital contribution on industrial land.

Councillor C. Fay referring to a capital cost breakdown prepared earlier, noted of the acreage to be served only about 311 was for residential and 700 for industrial. On this basis he suggested the proposed capital cost of \$650 an acre was too low.

Councillor Bob McCuaig suggested a municipality was like a business. It was necessary to invest to make. He also objected to members talking about "the old town and the new town. It's all our town now," he emphasized. He also suggested the trunk sewer would benefit both sections of the town.

"We've got to improve and we have got to pay for the improvements. We want to know how we're going to pay for them," Councillor W. Ferguson summed up.

Asked if the project was necessary to develop the annexed land, the engineer pointed out that \$153,000 of the original bid is for replacement of the undersized pumping station at Fulton St. "It would have to be replaced regardless of annexation."

Receive Oak apology

An Oakville apology to the Mayor of Milton and members of the Council, conveyed "the sincere apologies of the Council of the Town of Oakville," for remarks of the Oakville mayor.

The strongly worded resolution, passed last week by the Oakville Council, decried the "indecent and insulting" remarks about Milton being a "cancer on the backside of Oakville." The resolution stated "That this Council does publicly deplore the statement made by the Mayor of Oakville and disassociates itself from it."

Mayor B. Best reported to Milton Council he had also received a letter from Mayor Anderson and had replied on a confidential basis, as the original letter had been received.

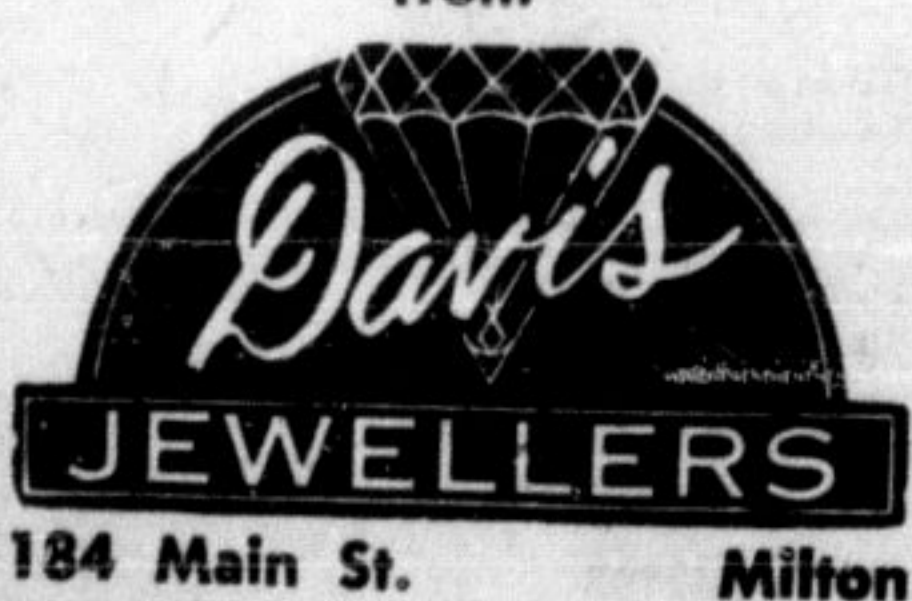
Milton Council, by resolution, acknowledged the letter and expressed the hope a better spirit of goodwill and co-operation would be established between the councils in the near future.



A PERFECT WEDDING

Starts with quality jewellery from engagement ring to wedding ring and the couple's exchange of gifts.

A DIAMOND IS A LIFETIME GIFT Choose with Confidence from



tion." The trunk sewer was necessary to service the land and the next stretch of sewer would be to Woodward Ave. which would relieve that pumping station.

Turning to financing, Auditor H. Leaver suggested on a \$680,000 project the annual payments would be about 10 per cent. The mayor pointed out the C.M.H.C. will finance \$133,000 of the current phase and forgive 25 per cent of the repayments.

Preparation of contour maps of the complete town as it would be after annexation was recommended by the engineer, so capital cost figures could be developed accurately after studying total servicing costs to the entire area. "This should be started now for completion by

the end of the year," the engineer suggested.

Councillor Fay concluded that if the trunk sewer project proceeds there would have to be a higher capital levy to cover the development costs.

Mayor Best acknowledged the amount of capital cost contribution to be levied would have to be studied in more detail from new engineering information.

The motion to let the contract to Clairson was approved as were two other implementing motions calling for signing an easement with R. W. Heard and permitting the financing of \$133,000 of the project with C.M.H.C. at 6 7/8 per cent interest. Of the amount it was pointed out approximately \$27,000 would be forgiven.

508 foot TV beacon rising on Hornby farm

Large sections of steel tubing are being hoisted skyward, and a crew of aerial constructors is scampering around high above the ground as a new cable TV tower is erected in a farm field east of Hornby this week.

Maclean-Hunter Cable TV is erecting a 508-foot master antenna there at an estimated cost of \$35,000. Chief Engineer on the project, S. Switzer said it would pick up TV stations from the local area plus Barrie, Buffalo and Peterboro areas and relay the signal to homes subscribing to cable TV in the west Toronto, Etobicoke and Mississauga areas.

The tower is located on the east side of the Tenth Line, Oakville, between Upper Base Line Rd. and Highway 401. The property is owned by Toronto radio station CFRB, which is awaiting approvals to erect a 740-foot television tower on the same farm.

Maclean-Hunter's tower is going up in 20-foot white and red sections, imbedded in concrete at the base and anchored with several guy wires. Actual erection began Monday of this week and by supertime the "skyhook brigade" had 140 feet of the tower in place. Mr. Switzer said the job should be completed by Friday -- barring windstorms.

Promoted to Staff Sergeant Parkinson goes to Kitchener

A member of Milton O.P.P. detachment for the past five years, Sgt. C. J. Parkinson has been promoted to the rank of Staff Sergeant, effective on July 15, and will transfer on that date to the 35-man Kitchener O.P.P. detachment in No. 6 District.

Originally from Toronto, Staff Sgt. Parkinson began his service with the O.P.P. in January of 1949 when he was posted to the Mount Forest office. In June, 1951 he transferred to Goderich and in October, 1959 he transferred to the Wingham Detachment as constable in charge.

He was promoted to Corporal in May of 1963 and transferred to the Milton Detachment. He became a Sergeant in April of 1967 while serving here. He and his wife and daughter

Lynn, a stenographer at the Halton County Sheriff's office in Milton, live on Anne Blvd., Milton.

Sgt. Parkinson is a member of the Masonic Lodge and his home lodge is Maitland Lodge No. 33 in Goderich.

Start meters here Tuesday

Installation of new water meters in Milton homes will begin next Tuesday morning, town works department superintendent Bruce McKerr reported this week.

A supply of meters and the installers' truck are on hand and ready to go. The work will start first in the Fallingbrooke area, then progress through town.



Prescriptions

FROM ELSLEY PHARMACY

We will bill Blue Cross, Green Shield, D.V.A. and Workmen's Compensation Claims Directly on Your Behalf. 878-4492 • 212 MAIN ST., MILTON

IT'S YOUR MOVE NOW!

"YES"! You can move into a new wide-track Pontiac, Buick, Cadillac, Beaumont, Acadian, Firebird or G.M.C. Truck for less than you would believe possible.



Check this board for the reconditioned "Goodwill" Used Car of your choice. All prices are clearly marked on the windshields for those who like to window shop. — AND REMEMBER, Our terms are tailored to your individual requirements, with only \$25.00 down and 42 months to pay if desired.

OPEN MONDAY TO FRIDAY TO 9 P.M.

BUY WITH CONFIDENCE FROM MILTON MOTOR SALES LTD. 388 Main St. Milton 878-2355

<p>1965 PONTIAC LAURENTIAN 4-DOOR Lic. # J88503, Auto., White Walls, radio. \$1,475.</p>	<p>1966 FORD XL CONVERTIBLE Lic. # J88501, Bucket seats, console, automatic radio, white walls, wheel discs. \$2,295.</p>	<p>1963 PONTIAC PARISSIENNE SEDAN Lic. # J88490, power steering and brakes, radio, wheel discs, automatic, eight cylinder. \$1,285.</p>	<p>1966 ACADIAN SEDAN Lic. # J84082, 6 cylinder 3 speed transmission. \$1,490.</p>
<p>1963 PONTIAC LAURENTIAN SEDAN Lic. # J81552, automatic \$1,065.</p>	<p>1963 FORD GALAXIE Lic. # J84035, automatic eight cylinder, radio. \$835.</p>	<p>1963 PONTIAC PARISSIENNE 2-DR. H.T. Lic. # 673491, automatic eight cylinder, power steering and brakes, radio, white walls and wheel discs. \$1,475.</p>	<p>1965 OLDSMOBILE SEDAN Lic. # 646678, automatic 8 cylinder, radio, white walls, wheel discs. \$1,795.</p>
<p>1964 BUICK 4 DR. HARDTOP Lic. # H76150, automatic, 8 cylinder, radio, white walls and wheel covers. \$1,285.</p>	<p>1961 PONTIAC STRATO CHIEF SEDAN Lic. # J8739, automatic, radio, 6 cylinder. \$585.</p>	<p>1966 BUICK 2-DR. HARDTOP Lic. # 551004, automatic radio, white walls, 8 cylinder and wheel discs \$2,335.</p>	<p>1964 VOLKSWAGEN 1500 Lic. # 673021, radio \$985.</p>
<p>1964 CHEVROLET BEL AIRE SEDAN Lic. # J35358, automatic and radio. \$1,290.</p>	<p>1966 OLDS 4-DR. H.T. Lic. # 659898, Factory air-conditioning, high performance engine, white walls, cruise control, radio, solex glass, wheel discs. \$2,765.</p>	<p>1963 FORD COUNTRY SEDAN (STA. WAGON) Lic. # 52796X, automatic \$1,395.</p>	<p>1963 PONTIAC LAURENTIAN Lic. # 681955, automatic and radio. \$1,070.</p>
<p>1967 PONTIAC PARISSIENNE 2-DR. H.T. Lic. # 673021, power steering and brakes, automatic, 8 cylinder, white walls, wheel discs and custom radio. \$2,765.</p>	<p>1965 PONTIAC LAURENTIAN 4-DOOR Lic. # J88222, 8 cylinder automatic, white walls and discs. \$1,390.</p>	<p>1964 PONTIAC STRATO Lic. # J86844, radio, 3-speed transmission. \$1,040.</p>	<p>1961 AUSTIN SPRITE CONVERTIBLE Lic. # J87119. \$445.</p>
<p>1960 FORD CUSTOM SEDAN Lic. # 671341, standard transmission, radio. \$175.</p>	<p>1966 CHEVROLET 2-DR. Lic. # 705211, 3-speed transmission, 6 cylinder engine. \$1,695.</p>	<p>1964 OLDS 4-DR. H.T. Lic. # J84000, automatic eight cylinder, radio, white walls, wheel discs \$1,490.</p>	<p>1965 PONTIAC LAURENTIAN 8 cylinder, Lic. # J83946 automatic and radio. \$1,450.</p>
<p>1965 CHEVELLE 2-DR. H.T. Lic. # J86335, auto., big six, power steering, white walls, radio. \$1,895.</p>	<p>1963 MERCURY METEOR STATION WAGON Lic. # 51952X, automatic, power steering \$1,080.</p>	<p>1962 PLYMOUTH SEDAN Lic. # J85215, slant six engine, automatic and radio. \$495.</p>	<p>1964 T-BIRD CONVERTIBLE Lic. # 685595, fully powered and equipped with all of Thunderbirds luxurious features. \$2,685.</p>
<p>1964 CHEVELLE STATION WAGON Lic. # X8788, auto, 6 cylinder and radio. \$1,350.</p>	<p>1968 PONTIAC 2 + 2 HARDTOP Lic. # 51291N, auto., Hi-perf. engine, 4-ply nylon white walls, vinyl roof, console, bucket seats etc. \$3,797.</p>	<p>1968 BUICK ELECTRA 225 4-DR. HARDTOP Lic. # J88766, climate control air conditioning, vinyl roof, power seats, windows and antenna. \$5,950.</p>	<p>1964 FORD TUDOR Lic. # J84046, 8 cylinder automatic and radio \$1,150.</p>

Our After Sale Guardian Maintenance Service Assures Customer Satisfaction for the Life of Your Car

MILTON MOTOR SALES LTD.

388 MAIN ST.

MILTON

878-2355