

--Town workmen have been busy repainting the white traffic guide lines on paved streets around Milton.



FIRST COMMUNION for several students of Holy Rosary Separate School, accompanied by Roman Catholic students of the Ontario School for the Deaf was held Sunday, June 2. Included in the service are (front) Doreen McIlwraith, Mary Ellen Carlyle, Virginia Gysel, Deanna McLain, Seana Turvey, Susan Johnston, Susan Ruest, Rise Levesque, Janice Jan-

icki, Denise Seratin, Marissa Peccini; (standing at left) Ellen Harkin, Charlene Bourgeois; (second row) Aurele Bourgeois, Gerald Schneider, Rino Demeo, Calum Turvey, Danny Baldwin, Dean Odorico, Enio Toffoli, Jimmy McLain, Anthony Soster, Kenneth Story, Charles Argenton; (rear) John Turvey, Donald Catania and Michael Turvey. (Staff Photo)

Lower speed to 40 Hornby recommendation

Motorists may soon have to adjust their speed to 40 miles an hour instead of 50 m.p.h. on the Base Line through Hornby, if a recommendation by the county roads committee meets with the approval of county council and the Board of Transport.

The area in question would include from Hornby ball park to the Seventh Line (Trafalgar Road). The committee recommended 40 m.p.h. rather than 30 because of a law stating motorists in anything over a 35 m.p.h. zone must stop for school buses.

The action is a result of a petition circulated by Mrs. Lillian Ayer of Hornby. The original petition asked areas of Trafalgar Road, the Base Line and the Seventh Line in Esqueping be lowered.

The roads committee did recommend part of Base Line be lowered and felt Seventh Line may be lowered after the road

diversion in Hornby was completed. This is scheduled for completion in August or September.

That portion of Seventh Line will become an Esqueping township road after the diversion.

Mrs. Ayer told The Champion she was pleased with the action taken.

Don't take life too seriously - you'll never get out of it alive.

Science has shown and proven to us that the mentally retarded can be helped. They can be taught to help themselves. This training must be carried on in special classes under special supervision. The North Halton Association for the Mentally Retarded is making use of these new methods and techniques. Support their dedicated work by planting the Flowers of Hope seeds that you will receive. And please be generous when the canvasser calls.

Kelso pool opens Saturday 10,000 there last weekend

The swimming pool at Kelso Conservation Area will open this Saturday for the summer.

It'll be about a week too late, according to swimmers in the crowd of 10,000 heat-beaters who flocked there on Sunday. The hot sun drove the masses to Kelso, where the wading pool was open and a supervised swimming area in the Glen Eden Lake was filled to capacity.

As a result, many of the visitors donned suits and jumped into other areas of the lake where there is no supervision-- a dangerous practice due to the lake's

uncanny habit of "dropping off" to deep water quite sharply. Halton Region Conservation Authority public relations director Miss Gail Ferguson reported dozens of people were shoed from dangerous areas of the lake through the day. Some even plunged into the creek below the dam.

"Our pool just wasn't ready to open," she said.

During the eventful Sunday, a motorcycle and a car collided on one of the Kelso roads, and a man was struck with severe heat prostration.

Tough luck, said the egg in the monastery. Out of the frying pan into the Friar.

FATHER'S DAY Specials

AT HARRIS STATIONERY

CARLTON - FATHER'S DAY CARDS

A Complete Selection to Choose From

- BRIEF CASES
- ATTACHE CASES
- WALLETS
- KEYTAINERS

Several Styles - Northrite Felt Tip Marker - 39c

4 Color Ball Pens \$1.98

Guest Book Registers Special - \$1.65

Pens and Sets 98c to \$25.

- OFFICE AND PERSONAL STATIONERY

Miscellaneous Ideas

- Steel Personal Files
- Trip Books
- Name and Address Books
- Foto Albums
- Writing Paper, etc., etc.

HARRIS

Stationery & Office Supplies
162 Main St. Milton 878-6962



IAN FOSTER graduated June 1 from Queen's University at Kingston with a B.A. degree. In September he will assume the principalship of Snyder's Public School in upper Oakville. He is the son of Mr. and Mrs. E. W. Foster of Woodward St., Milton.



RECEIVES M.A.
Bruce Galbraith, son of Mr. and Mrs. Earl Galbraith of R.R. 1, Milton, graduated June 6 from University College, University of Toronto, with his M.A. in French. He will be teaching at York Mills Collegiate in September.



OBTAINS B.A.
Garrett Wickens, son of Charles and Elizabeth Wickens of Milton, has obtained his B.A. in Philosophy and French at Laurentian University in Sudbury. A graduate of Milton District High School, he plans to continue his education.



ELECTRICITY IS OUR BUSINESS

Don't be a Tinkerer with Electricity. Call an expert for

- ★ HEATING WIRING
- ★ NEW CIRCUITS
- ★ ADDITIONAL OUTLETS
- ★ OUTDOOR LIGHTS

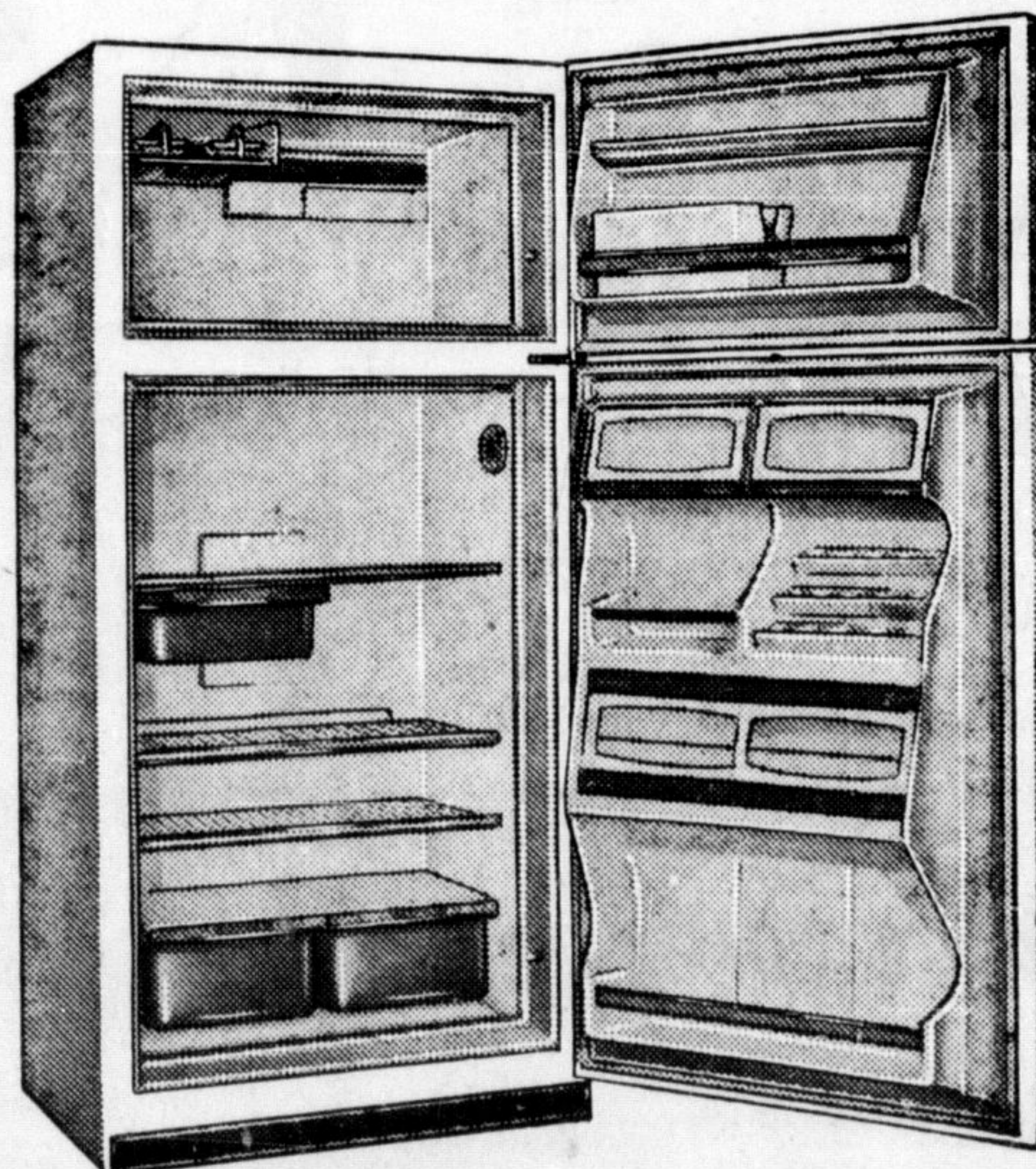
FEATHERSTONE ELECTRIC
878-6378

IT'S "DOWN WITH DEFROSTING"

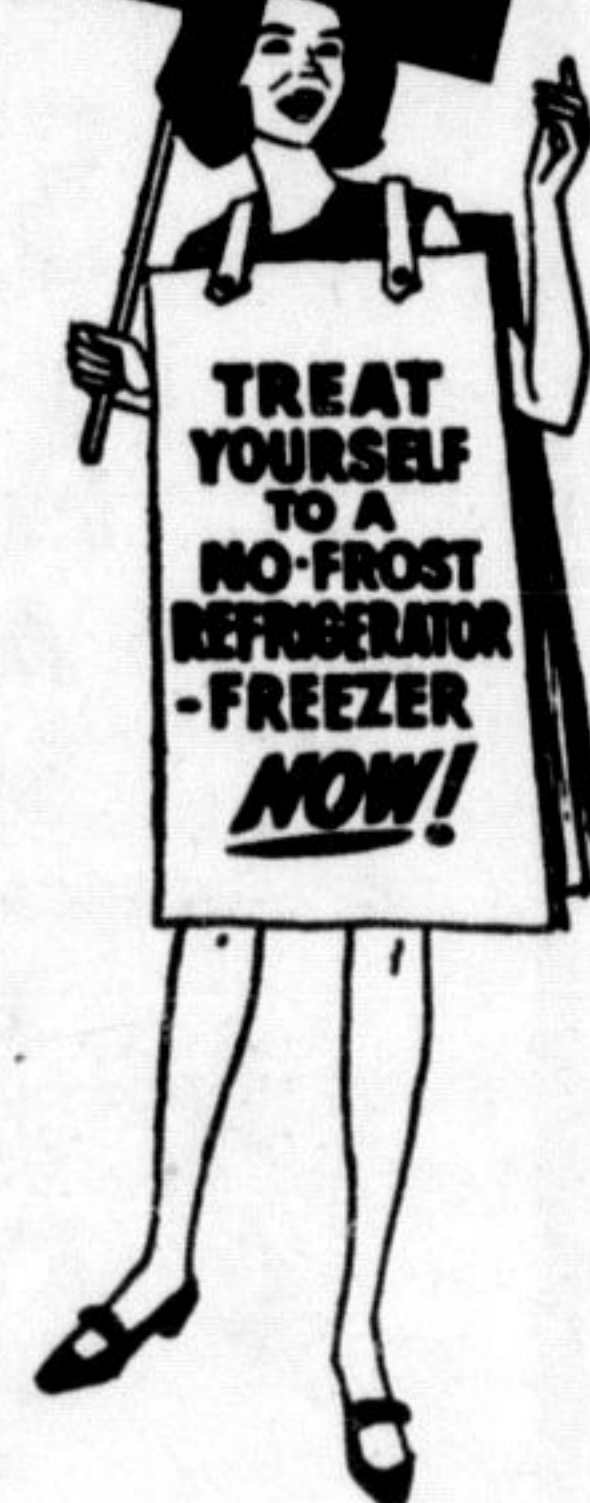
When you buy a

Gibson

Refrigerator-Freezer from Chase's



DOWN WITH DEFROSTING!



Automatic Defrost Models

Priced From

259.88

WITH TRADE

- FREE FACTORY SERVICE
- FREE DELIVERY AND INSTALLATION

EASY BUDGET TERMS AVAILABLE

There's Plenty of Free Parking at

181 Mill St.

CHASE'S

HOME APPLIANCES

Tel. 878-3221



In genuine CONGOLEUM

Here are beautiful roses on backgrounds of grey, beige, or blue to compliment your decor. The colors and sizes you want, at the prices you love! Stop in today - see for yourself what these "CONGOLEUM" printed rugs can do for your home!

- years of wear
- fade-resistant color
- cleans with just a damp mop
- sanitary - seals out dirt
- just roll out, and it lies flat



only \$14.88 9 x 12 rug

K. W. (DICK) CLEMENT & SON

123 Thomas St. MILTON 878-2194

Here's how the Progressive Conservative program for eastern farmers will assure:

a strong, profitable family farm.

The family farm has been fighting a losing battle. The average income per farm in eastern Canada is less than \$1,600 per year. Increasing costs of feed grains, non-marketable surpluses of butter, eggs, milk, the high cost of credit, and hit-or-miss government policies have driven many farmers from their land.

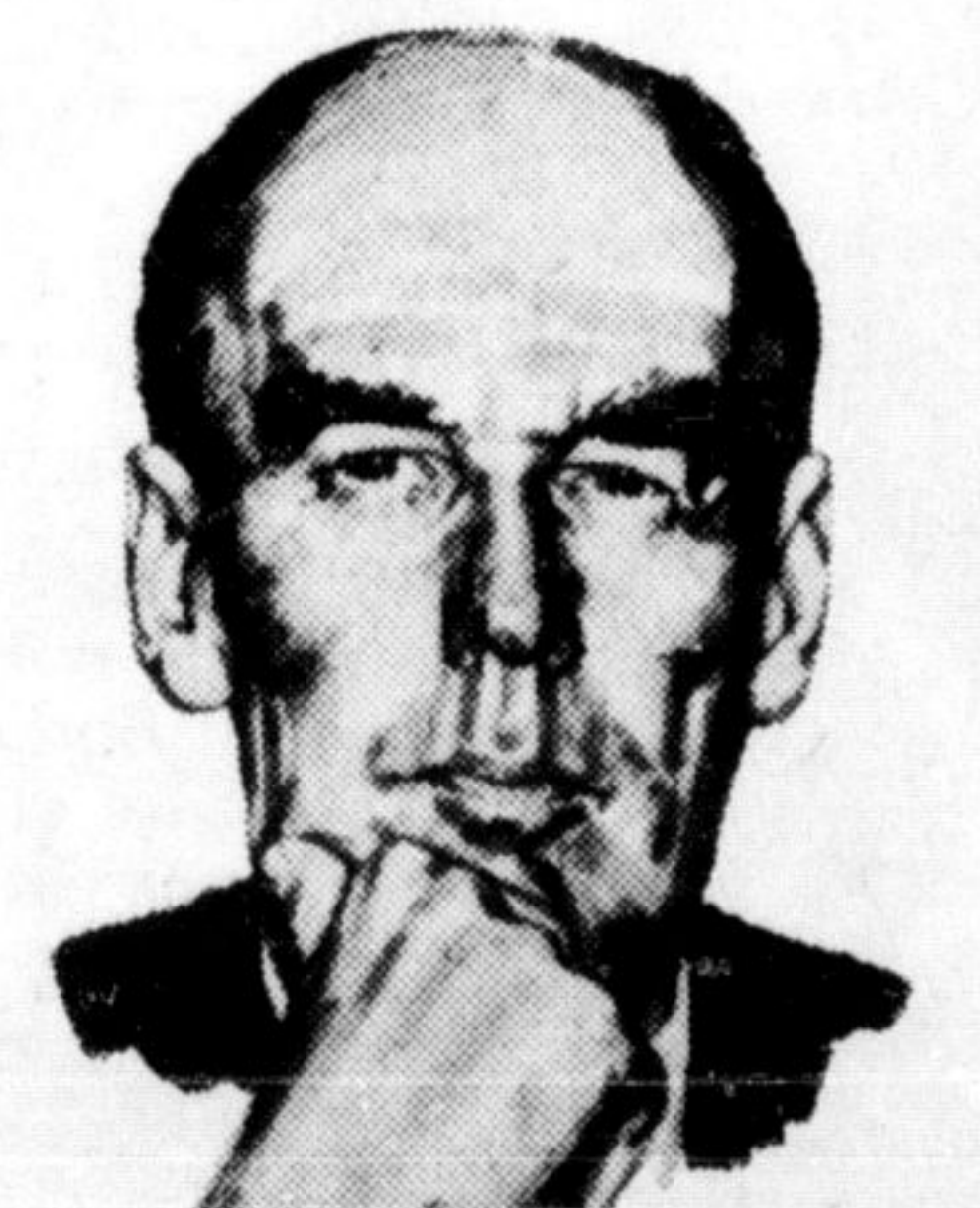
The Progressive Conservative Party program is planned to give the utmost assistance to family farm operations; to establish a program to convert marginal farms into paying farms. Here are the first steps that must be taken:

1. A permanent Eastern Agricultural Bureau - This permanent bureau for Eastern Agriculture would co-ordinate agricultural policies and conduct overall assessment of the most economic utilization of the great Eastern agricultural resources.
2. Feed grain - Transportation assistance to provide feed grains at reasonable prices for beef, dairy, hog and poultry farming. Assistance for forage and grain crops. Low interest rates to encourage extension of feed grain acreage. Increase emphasis on feeder lots and community pasturage. Better fertilizer subsidies.
3. Surpluses - Step up sale of agricultural surpluses to foreign countries. Initiate effective anti-dumping measures. Assistance to industries utilizing dairy products to eliminate non-marketable surpluses of butter, eggs, milk, skim milk powder and industrial milk.
4. Reactivate ARDA Program - Better co-ordinated and regionalized making it possible to deal more effectively with provincial agricultural agencies.
5. Livestock insurance - Through extension of crop insurance.
6. Review tax load on farmer - With a view to accelerating rate of depreciation on farm storage facilities, additional production buildings and future land development.

7. Amend Farm Improvement Loans Act and Farm Credit Loans Act - To be tied in with province farm improvement funds. This would include extension of terms of repayment.

8. Seasonal duties - Review and up-date methods of protecting markets through a whole new approach to tariff, subsidy, quota, acreage control and license to produce in cooperation with provinces and producers.

The more you think about it...
STANFIELD
is the man.



VOTE PROGRESSIVE CONSERVATIVE

Published by the Progressive Conservative Party of Canada.

VOTE FOR **McWILLIAMS Peter** X
PROGRESSIVE CONSERVATIVE CANDIDATE IN HALTON