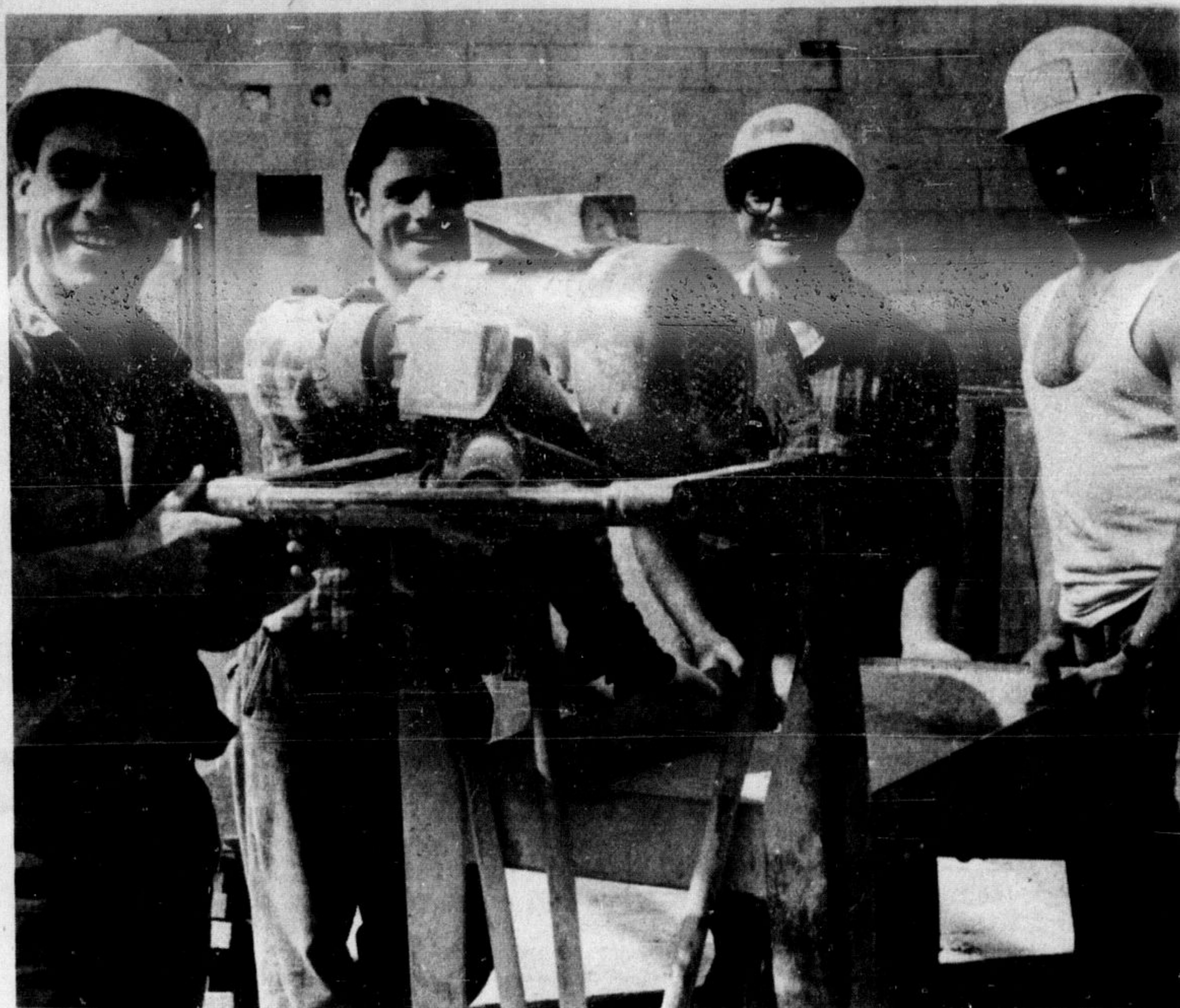


--High school will soon be over for another year.
 --The Champion classified ad number is 878-2341.



WHILE IT DOESN'T look it now, this will be four classrooms, a single (girls') gymnasium, change rooms, instructor's office and storage, a team room, science room, occupational training room, business office, practice room, electric typing room, accounting department, business machines, marketing and merchandising, workroom, commercial director's office and conference room at the end of four months. (Staff Photo)



COME SEPTEMBER, scenes like workmen moving block cutting machinery will be replaced by a \$1,500,000 addition to Milton District High School. Trustee David Smith, chairman of the M.D.H.S. Board property committee, reports the board is well pleased with the progress of the addition and Stewart-Hinan, the contractors and their sub-contractors are ahead on 80 per cent of construction. The addition will probably be open and equipped by the start of the 1968-69 school year. (Staff Photo)

EXPERT BODY WORK

CAN GIVE ANY CAR THAT SHOWROOM-FRESH LOOK

Come in for a complete appraisal today.

BILL'S AUTO BODY

878-2721
 878-3251



SOLID NEW WALLS TO CABLES causing problems, there's plenty of activity at the new M.D.H.S. addition. Here bricklayer foreman Werner Koveck smooths out the foundation while at right sub-contractor Edgar Howden



and Sam Campanes examine an unearthed telephone cable. Representatives of the high school board and the contractors meet approximately every three weeks to talk over progress of the construction. (Staff Photo)

Army of helmeted workmen

High school addition on schedule

At the moment, it's mostly an army of helmeted workmen scampering out of the way of each other, bulldozers, and the Jiffy truck; but at the end of four months, Milton District High School Board is hoping to open a fully-equipped one and one half million-dollar addition to the M.D.H.S., accommodating more than 1,000 students.

Construction began in mid-December. The extensions will include four classrooms, a single (girls') gymnasium, change rooms, instructor's office and storage, a team room with access to the athletic field, a science room with adjoining storage room and a girls' occupational training room which will accommodate practical occupational activities for pupils transferred from elementary schools.

The second phase will include an office, practice room, electric typing room, accounting and bookkeeping, business machines, marketing and merchandising classroom and workroom, as well as the commercial director's office and conference room.

The second phase of construction includes work on the west side of the present building forming a U shape with existing shops. It will include two drafting shops and printing room, metal fabrication and auto shops with a technical director's office and conference area. The three present shops will be altered to accommodate mechanical technology, electrical technology and boys' occupational training. The present library will be designated a music room. An additional boiler room will also be included in this section.

In the final phase of the addition, major changes will be made in the present main entrance area and the present cafeteria will be expanded by about 50 per cent to accommodate an estimated 325.

The main entrance to the school will be closed and a new entrance introduced leading from

the east parking lot through a covered alleyway separating the new library from the present cafeteria. A large new library resource centre including two seminar rooms, reading room, workroom and librarian's office will be built on the north side of the building. The present main foyer will be converted to a teachers' workroom adjoining the offices and principal's office and machine room.

A new stage will be added on the present double gymnasium with two adjoining dressing rooms. Above these rooms will be a uniform storage room and

mechanical facilities. The present stage will be converted to a text book storage area and book store.

The playing field will be moved from its present location on the south side of the school, which will accommodate part of the addition, to the east side where the board recently purchased nearly five additional acres. It will include a football field with a quarter mile cinder track according to present plans. Alterations in the parking lot will provide accommodation for 136 cars.

ADAMS NEW MANAGER'S SALE

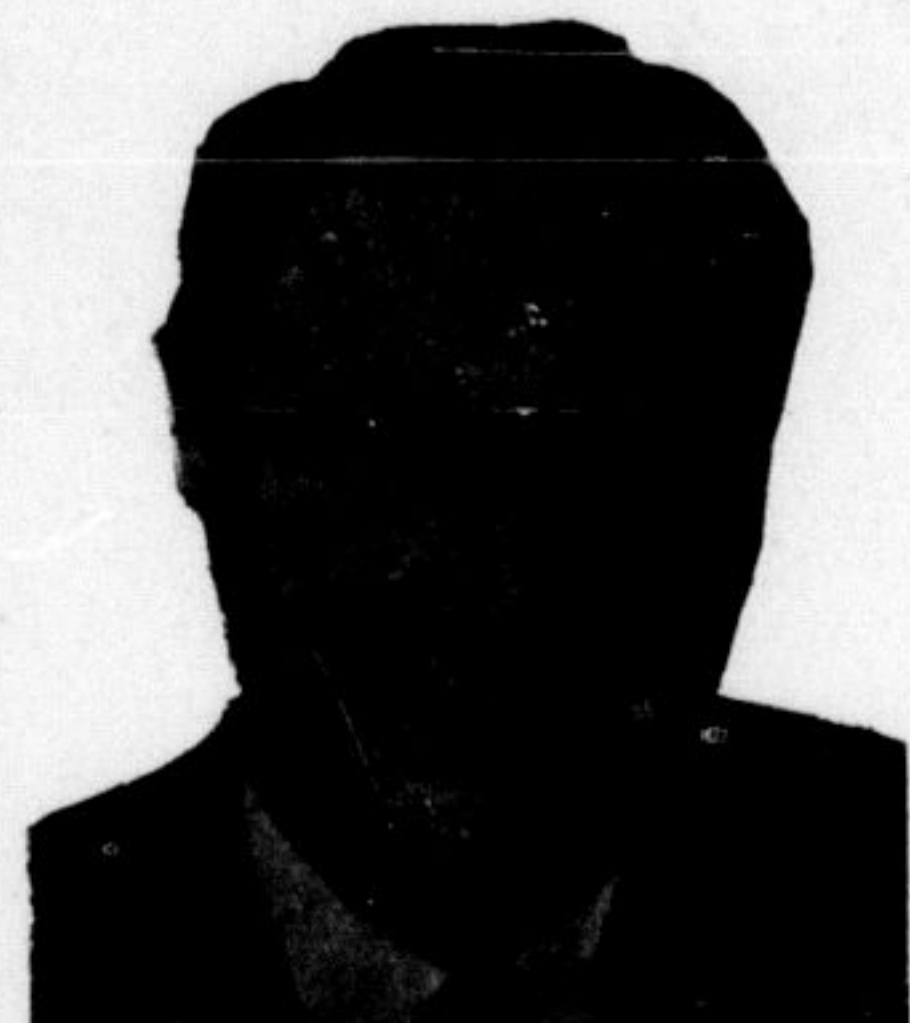
A very special bedding value offered for this sale only!

"ALL STAR" MATTRESS TAILORED IN SCROLL-QUILT RAYON DAMASK

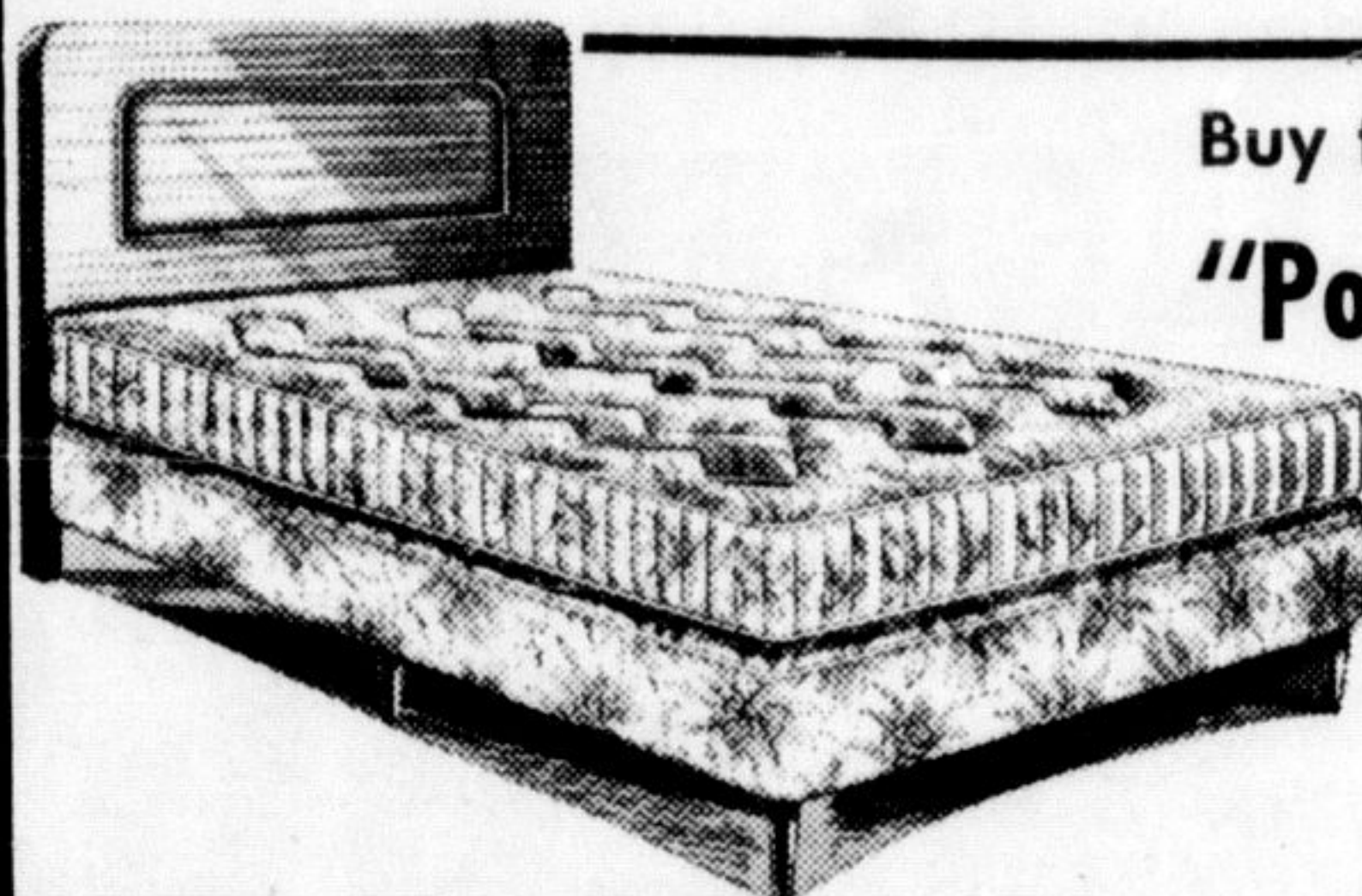
Hi-grade rayon damask under-puffed with foam, over 312 coils for superb comfort. Generous sisal and white felt padding. Pre-built borders with handles and ventilators. All standard widths.

ANNIVERSARY SPECIAL
44.95

MATCHING BOX SPRING
 Similar to mattress in construction and price. **\$44.95**



Mr. JACK MASTERSON
 Store Manager



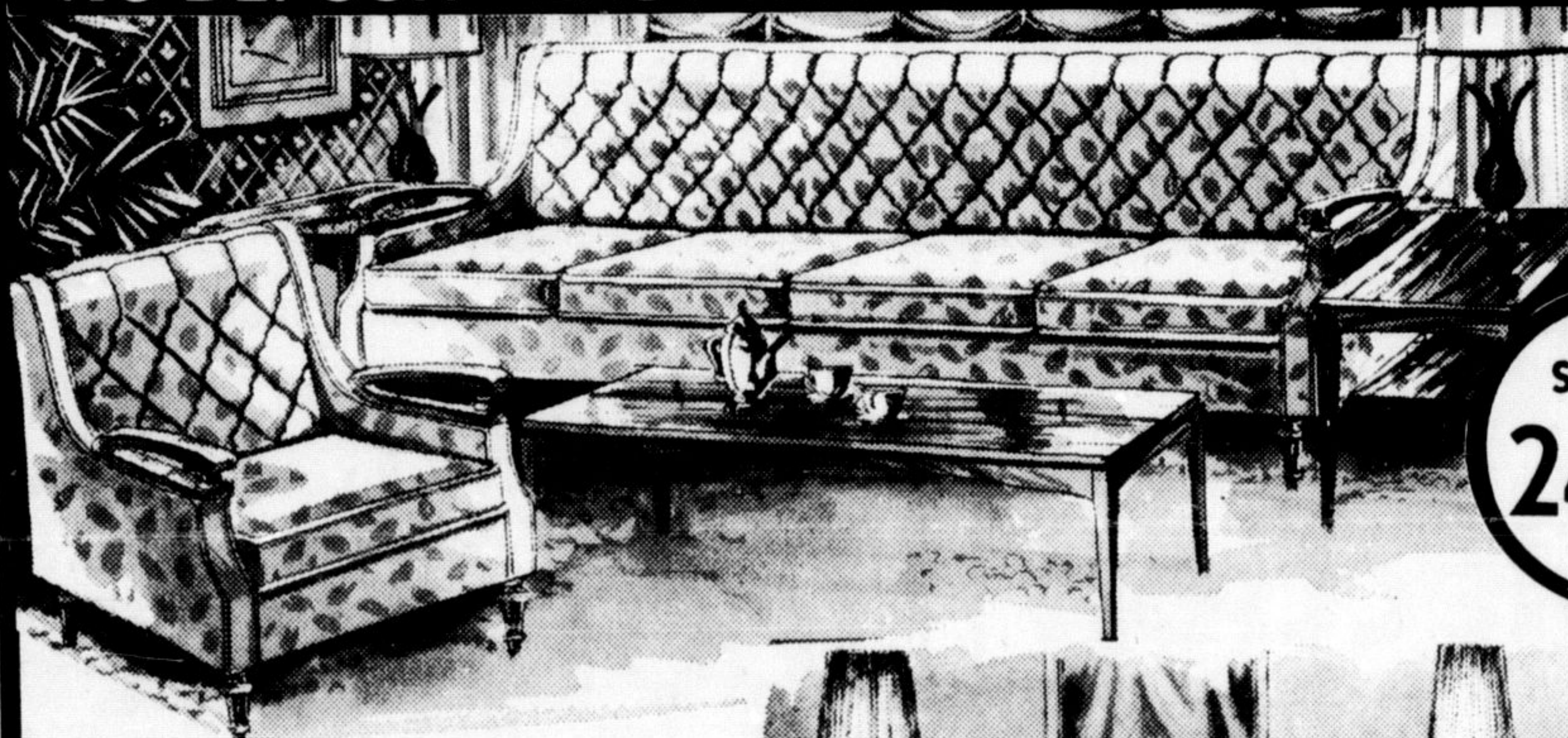
Buy two of them — they make a handsome twin bed outfit!

"Posture Sleep" Continental Bed with Vinyl Headboard

3-pce outfit includes a 39" wide, 220-coil mattress tailored in scroll-quilt floral print ticking, matching box-spring with six legs and a beautiful vinyl-upholstered headboard padded with Tufflex.

SPECIAL
69.95

NO DEPOSIT - EASY TERMS TO SUIT YOUR BUDGET — COMPLETE DETAILS OF CREDIT TERMS ARE AVAILABLE AT ANY BRANCH



Superior Quality and Design!
2-PIECE LIVING ROOM in Floral Pattern Boucle

An attractive 'Hi-back' suite with smart diamond-tufted moulded foam backs and genuine air-foam cushions. Slim-line arms are accented with hand-polished hardwood. Your choice of colors.

SPECIAL
249.95

A top-value suite at a Special Sale Price!

3-PIECE BEDROOM WITH BEAUTIFULLY STYLED HEADBOARD IN WALNUT FINISH

A finely styled suite featuring a 64" 9-drawer triple dresser with semi-framed mirror, 4-drawer chest and 4'-6" bed with elegant open panel headboard. Drawer fronts are accented with carvings and brass hardware.



SPECIAL
199.

3153 BARELINE RD., MILTON, ONT. TELEPHONE 878-2208



Nadalín Electric Company, Ltd.
 INDUSTRIAL AND COMMERCIAL CONTRACTING
 SUBSTATIONS AND MOTOR REPAIRS - UNDERGROUND WIRING
 POLE LINE CONSTRUCTION - AERIAL FLOODLIGHTING
 CUSTOM CONTROL PANELS

24 HOUR MAINTENANCE SERVICE LOU NADALIN

WE WANT YOU TO KNOW . . .



that service isn't something we just talk about and then forget. Our business is to protect the interests of our customers. Try us for insurance service!

CALL

McCUAIG INSURANCE LIMITED
 208 MAIN ST. E. 878-2894



203 MAIN STREET Phone 878-6642

Buy with the utmost confidence! Service and satisfaction guaranteed!

OPEN DAILY - MON., TUES., THURS., SAT. 9 a.m. - 6 p.m., WED. 9 a.m. - 12 p.m. - Shop Conveniently on Friday Till 9 p.m.