

# Hornby, Ashgrove churches amalgamate to build new Hillcrest United Church

"Hillcrest United Church" is the name selected for a new church to serve the Hornby and Ashgrove areas of Esqueving Township.

The congregations of Ashgrove and Hornby United Churches have decided to amalgamate under the new name, and erect a modern new church somewhere in the vicinity of the two present buildings -- probably midway between the two on the Seventh Line. A stewardship campaign among the 90 families -- totalling about 185 resident members -- was launched on the weekend.

Rev. P. Keith Hawkes, minister to the Hornby Pastoral is delighted over the amalgamation. "The congregation is enthusiastic and excited," he said. "Amalgamation will provide us with better facilities and a more efficient operation. It will effect the whole life and work of the congregation, and improve its service to the community."

The two churches lie barely three miles apart. Most of the members are friends and close neighbors with those in the other church. There is an excellent community spirit covering both congregations, the minister explained.

Travelling time, duplication of services and the need for better Christian education facilities were also important factors in the congregation's decision, the minister said. Mr. Hawkes also serves a third church in his charge, Bethel United at Drumquin, and the three Sunday services spaced a scant 15 minutes apart create a trying Sabbath for the busy minister.

The Bethel church will remain to function on its own. It is a larger church than Ashgrove and Hornby, has many more modern facilities, and appears quite adequate for the area's future needs.

Ashgrove, once located further north on the Seventh Line at the entrance to Stewarttown village, was incorporated as a Methodist church around 1860. It was later re-located just south of the Ashgrove intersection. The Hornby church has a vague history -- but not for long. A committee of historians is already delving into its past and by the time the new church is open, a full history is promised.

The historians face a man-sized challenge, as the century-old Hornby church was once connected with now-defunct churches at Bowes and Trafalgar and later joined the Hornby-Ashgrove-Bethel charge.

Planning for the merger was often talked about in recent years but it officially began in January 1967 when congregational meetings of both Ashgrove and Hornby churches appointed a committee to investigate the future. The two committees first met separately, then together. They took their merger proposal to the Official Board of the two congregations, then in November appeared before the congregations.

Each congregation voted by an overwhelming majority to amalgamate as of January 1, 1968. On January 24 the first meeting of the new congregation was held at Ashgrove church and a large, enthusiastic, responsive group elected new officers and appointed a "planning and extension committee" to initiate plans for the new building.

A week ago Sunday, March 3, the new congregation held its first joint service of worship at Hornby Church. They crowded into the church until it was full and extra chairs had to be provided -- and over 60 boys and girls overflowed the Sunday School facilities in the basement of the building.

A brief congregational meeting held following that service selected the name, "Hillcrest". Next step is the stewardship campaign, lasting from March 10 to April 13. Mr. Hawkes reports there is no reserve on hand toward the new building -- "we'll be starting from scratch" -- but he is confident the congregation can swing the new building which will probably run in excess of \$100,000. No official cost is available as they plan to await the results of the financial campaign before making any drawings or approaching an architect. The two present buildings will probably be sold.

The planning and extension committee includes chairman Claude Pickett, secretary Mrs. Edythe King, treasurer Johnson Neelands, planning and needs chairman William Wilson, and finance chairman Jim Snow.

Elders of the new church are Robert Cunningham, Lloyd May, Stan Price, Charles Austin, Ernie Gillis, Claude Pickett, Fred Nurse, Vernon Pickett, Harold Robson and Clifford Wrigglesworth.

The trustees include Thomas Brownridge, Bruce McClure, Johnson Neelands and Clifford Wrigglesworth.

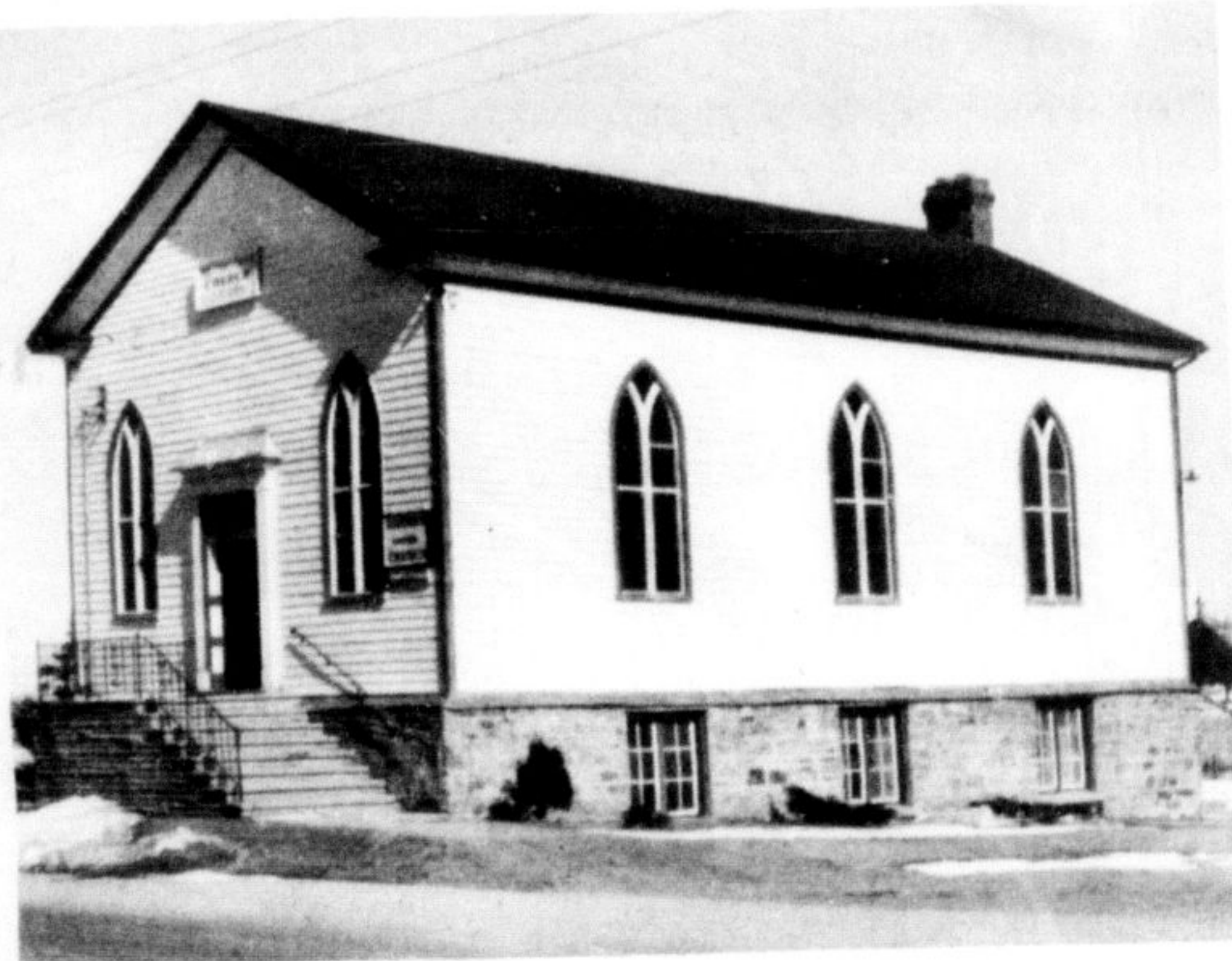
Chairman of stewards is James Carney with Bill Wilson as secretary, Mrs. John McNabb as treasurer and John Wallace as her assistant. Other stewards are Ward Brownridge, Harold Reed, Ford Wickson, Ralph Cunningham, Roy Wilson, Johnson Neelands, James Snow, Mrs. Edythe King and William Wilson.

The ladies are already at work knitting the women of the church into the new U.C.W. organization. An organizational meeting was held January 31 and the first general meeting was held in late February.

Their new executive includes president Mrs. Clifford Wrigglesworth, vice-president Mrs. Ward Brownridge, recording secretary Mrs. Vernon Pickett, corresponding secretary, Mrs. Lew Sampson, treasurer Mrs. Harold Robson, assistant Mrs. George Wilson and Unit Leaders Mrs. James Snow, Mrs. Ward Brownridge and Mrs. Harold Reed.



**HORNBY UNITED CHURCH**, on the Base Line near Oakville's Trafalgar Road, is one of the two churches merging to form Hillcrest United Church. The merger, a year in the planning stages, took place on January 1. The two congregations are planning a fund-raising campaign to build a new church to replace the present two. (Staff Photo)



**ASHGROVE UNITED CHURCH**, the most northerly church of the three-point Hornby charge, sits on the east side of the Seventh Line just below Ashgrove intersection. It was founded in 1860. It has merged with Hornby United Church to form one to be called "Hillcrest". (Staff Photo)

## Open house anytime at Sunshine School

Education Week is March 3-9. The Sunshine School for the Mentally Retarded does not have Open House on a certain date, at set hours, but it is one of your community schools and you are invited to visit it anytime.

These children are members of your community. Their sisters and brothers attend various schools - their parents live, work and shop in your community. Come and see these bright, shining faces and learn what is being done to help them become good citizens.

If your club or group wishes to visit contact Mrs. Jeffares, the principal, and arrange a date. She and her staff, as well as the children, will welcome you.

The Milton Lions Club were hosts to Mr. and Mrs. H. Isham on February 26, at which time a film was shown of the H.O.P.E. Workshop.

The trainees of the Workshop were treated to a delicious luncheon of pizza, given by the new Pizza House, Mill St., Georgetown.

A cheque for \$25 from the Esqueving Women's Institute and a filing cabinet from the Georgetown Fireproofing Company were donated to the Workshop.

### Old one leaking

#### Fire truck gets new tank

A new 500 gallon water tank was installed in Milton Fire Department's 1951 pumper truck last week, and firefighters breathed a big sigh of relief.

The tank developed a leak several weeks ago, which could not be repaired. It was losing about 75 gallons of water a day - most of it on the floor in the fire hall -- and firefighters had to refill the tank twice a day to keep it ready for emergencies.

Fire Chief A. E. Clement explained the truck is the one used primarily for country fire calls, and the necessity of having a full 500 gallons of water on arrival at a country fire has often been proven. "That first 500 gallons is one of your most important tools," he says. If the pumper runs low on water, a tank truck can be dispatched to the fire to back up the original 500 gallons.

The King Seagrave Company in Woodstock replaced the leaking tank with a new one Monday. Chief Clement drove the truck up early in the morning and returned at suppertime. The evening before, half the firefighters had unloaded the hoses and equipment from the pumper and placed it on a half-ton truck in case there were any fire calls while the pumper was away.

Monday evening, the other half of the men put all the hose and equipment back in place on the pumper.

And, you guessed it, there was a country fire call on Monday. The brigade recorded the year's first grass fire in a farm field near the Base Line-Tremaine Road intersection in Oakville. The number two pumper, the one usually reserved for town fire calls, answered the alarm accompanied by the Town of Milton 500 gallon water tank. This pumper carried just 200 gallons of water in its tank. Little water was required to douse the grass fire, however.

### J. Ostler president instrument assoc.

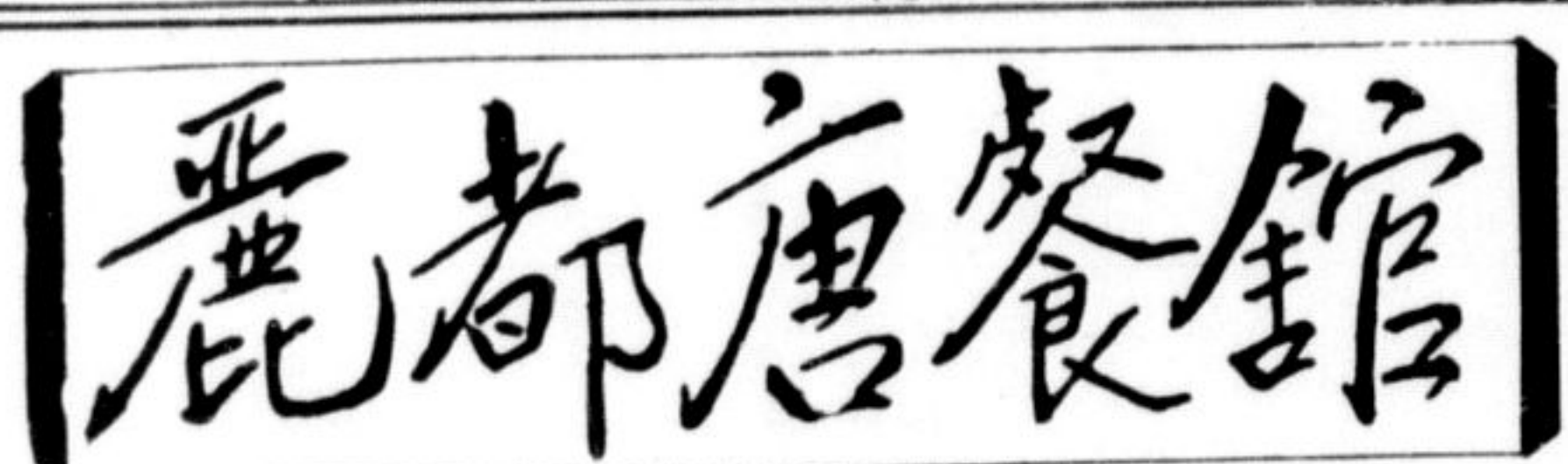
John W. Ostler, president of Canadian Meter Company Limited with its head office in Milton, has been elected president of the Industrial Instrument Manufacturers' Association.

He and five other executive members were named at the group's recent annual meeting in Toronto.

## Apples For Sale

**Ontario Tree Fruits Limited** is once again opened for the sale of apples to the public.

— MacINTOSH — SPY — DELICIOUS  
**AT WHOLESALE PRICES**  
370 Ontario St. Milton 878-2451



### SUNDAY DINNER SPECIAL

**\$1.25**

- CHICKEN AND RICE SOUP
- ROAST YOUNG CHICKEN DINNER
- MASHED POTATOES OR FRENCH FRIES
- CHEF SALAD GREEN PEAS
- STRAWBERRY SHORT CAKE

FOR RESERVATIONS PHONE 878-9061

We Are Open Every Day Throughout the Year

### LIDO RESTAURANT

181 Main AIR CONDITIONED Milton



## Your Red Cross Thanks You

On behalf of the Milton Branch, Canadian Red Cross Society, may I extend sincere thanks to all who helped to organize, group captains, canvassers and donors to our fund-raising campaign last week.

**DR. PAUL KENT,**  
Campaign Chairman,  
Milton Branch.

### Annual report

## Bell adds 255 phones here

The annual report of the Bell Telephone Company for 1967 records unprecedented growth in the Company's operations. The report, now being mailed to shareholders, characterizes Canada's Centennial Year as a "time of vigorous activity and solid accomplishment."

Early in the year the Company inaugurated Canada's first electronic telephone exchange to serve Expo 67 and its millions of visitors. Around mid-1967, it grew past the five million mark in the number of telephones served and, for the first time in a single year, exceeded \$300 million in capital expenditures to further expand and improve its far-flung communications network.

In December, Bell Canada entered the space-age of telecommunications with the start of construction on an experimental earth station designed to test various aspects of communication satellite operation, and to add a Canadian share to the world's knowledge of the use of satellite techniques in communicating with isolated outposts of the far north.

Bell's record year was reflected in Milton, where the Company's construction program totalled almost \$150,000. Across

the Company the figure was \$312 million compared with \$293 million in 1966. A 95 per cent of this was spent in Canada.

The total Bell Canada payroll for 1967 was \$237 million. New collective agreements negotiated during the past year provided for increased wages and benefits in line with similar changes in other Canadian industries.

The Company's federal, provincial and municipal tax bill amounted to \$131 million, the equivalent of \$3.80 per share of \$26.10 per telephone in service.

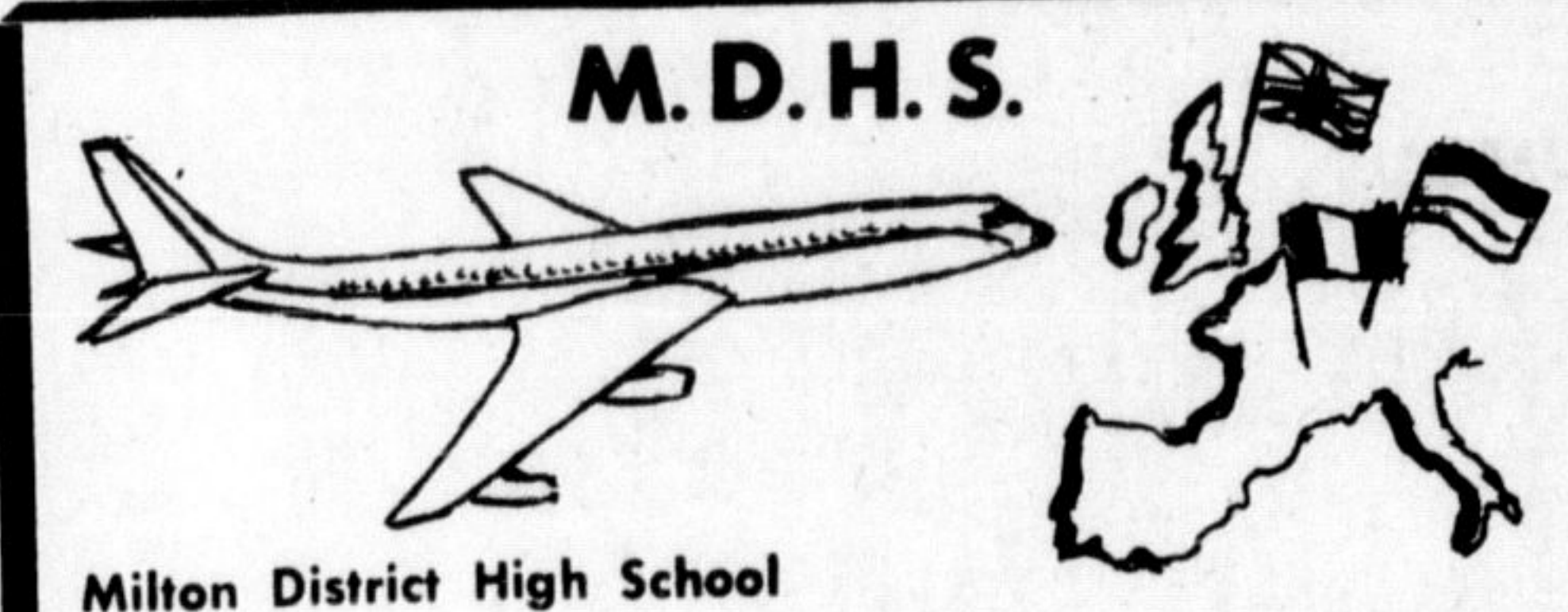
Of about 284,000 telephones added to Bell Canada's switching network, 255 were added in Milton. At year's end the Company's total telephones in service were 5,152,101, and 5,078 were in Milton.

## Adds \$17 to fund for Sicily victims

Mill St. businessman Alfonso Crisci reports the Canadian Disaster Relief Fund for Sicily, which has its collection depot for this area in his store, has collected \$17.55 since \$70 was sent to the Canadian Red Cross for transfer to the Italian Red Cross three weeks ago.

Collected from patrons of the store, the money goes to aid Sicilians who experienced loss of life and property in the wave of earthquakes earlier this year.

--J. T. Blume, president of Milton Brick Co. Limited, has been named to a three-man board of directors named for Flemdon Limited. The firm holds a half interest in 200 acres of Flemington Park in the centre of Metro Toronto.



Milton District High School

## WE WANT WORK!

During the summer of 1969 a group of M.D.H.S. students hope to tour Europe. We will do ANY TYPE of work at very reasonable rates. Your support would be appreciated.

### EUROPE WORK COMPANY

CALL EVENINGS

Milton - Janet Beverley 878-2702

Campbellville - Garnet Mitchell 878-2101



### It's the biggest party of the year.

## No one was too hot. No one was too cold. No one was stifled by cigarette smoke. Want to know why?

A modern gas furnace was balancing the heat and humidity, circulating a constant supply of fresh filtered air into every room of the house.

The evenness of automatic gas heating never gave the air a chance to get over-heated from too many people,

or clogged by cigarettes. Constant circulation never allowed the air to settle into a cold stagnant pocket.

When natural gas fuels your central heating system, you can be sure of dependability, economy and cleanliness. And when you equip your gas

furnace with a power humidifier and electronic air cleaner, you'll have discovered Total Comfort.

So go ahead. Live it up in comfort. See your heating contractor, department store or Union Gas.

## UNITED GAS

With natural gas, you can take gentleness for granted.

CALL YOUR HEATING CONTRACTOR

### S. A. FAY & SON LTD.

Phone 878-6533  
146 Main St. E., Milton

Plumbing and Heating  
Serving this community for over a quarter of a century

### Re

Third should Arena Milton annual The hitch a success Larry but not and a r of Mrs. pany w tions problem The carniva Mrs. J.

### Pr for

The Church March Gordon Aid m preside a praye 121. M minutes treasur Mrs. De up and decid Mrs. L was ans After sit 519, the

### I.O.D. short

Mrs. dent of of Ontar today the short st offered in \$200 and The c writers, ident in I.O.D.E. testants Closing April 30, Chairn ettion i: Hamilton Miss teacher c erature Conditi petition s submittin tact Prot arlo, LC West, Ha

### Spi St.

A love greatly to the annu at Knox Saturday The Re the aftern

### Lib org for

As a r at a meet a group ahead to f Associati riding. Twenty-W. B. Da of the Ont Associati man, Pre. and Disti tion speak. At a me Irene Krea named pre executive f The fou associati 14, and the Mrs. Robe speaker. Those should cont ublic at 84