

EBENEZER

Christmas concert held by Sunday School, choir

by Mrs. R. McLeod

Ebenezer friends enjoyed a combined Sunday school and choir Christmas concert last Friday evening. Rev. Russel Findley acted as chairman. Joy Hayward's class, with Laurie Early as soloist, sang "Santa Claus is Wayne and Jimmy Gali had a welcoming recitation, followed by Dougie Joss.

Jessie and Ruth Munroe, looking like candles themselves, recited a verse about a Christmas candle. Wayne Thomson told about taking care of his Christmas tree. Greg and Jay Kitching gave a verse about Jesus' birthday.

All the little children then sang "Away in a Manger" and "We Wish You a Merry Christmas." The choir sang, "Angels We Have Heard on High." Mark Munroe recited "Christmas At Our House," and Jimmy Ferrier brought "Greetings."

The Choir's second selection was "The Carol of the Birds." The Superintendent, Mr. Horace Blyth, then brought greetings. He said there is an enrollment of 545 children at Brookville School now. Ebenezer would be very happy if more children and older ones would attend our services, Sunday School at 10:30, Church at 11:30.

Mrs. Ward's and Mrs. Joss's

--Start the new year right with a Champion classified.

--There were no babies born in Milton District Hospital on Christmas Day this year.

class then combined for several numbers, with Jamie Thomson as announcer. Jody and Cindy Jackson, and Denise and Debbie Daigle rendered, "Let us have music for Christmas."

Paula Kitching sang, "The Merriest Christmas Present." Debbie Gall recited, "The Christmas Star" and Janice Munroe, "May the Joy that Comes at Christmas."

Valerie Wild accompanied a chorus of girls on her Hawaiian guitar in "Silent Night."

Billy Wild, Ross Hower, Mark Munroe, David and Dean Joss, and Mark Moore had verses about Obedience, Service, Love, Kindness and Cheer.

Shirley Moore gave a prayer. The Choir then sang "Here We Come A-Carolling" followed by recitations by Ken Hower, Billy Simpson and Norman Moore.

Mrs. Bill Early at the piano with Sue Ward at the organ brought in Santa Claus to the tune of "Jingle Bells." The old saint distributed gifts to bring a lovely evening to a close.

Mr. George Thomas's many friends will regret to hear that he is a patient in St. Joseph's Hospital, Hamilton.

--Toll-free calling between Milton, Georgetown, Burlington and Oakville means more and more customers are ready to act on your classified ad these days, than ever before. Just dial 878-2341 to place a "fast action" want ad.

Christmas crashes take property toll

Milton Police had a busy Christmas week, accident-wise.

A total of \$150 property damage was done to vehicles owned by Dennis L. Genereu of 120 Shepherd Ave., Willowdale and Albert A. Schouten of R.R. 1, Campbellville in a two-car collision Wednesday (December 30) on Martin St. just north of Base Line Rd.

The following day a car driven by Amelia Edith Jackson of 205 Elm St., Milton, received \$120 damage, and another driven by Charles H. Milles of 372 Woodward Avenue received \$20 damage in a collision at the corner of Main and James Streets.

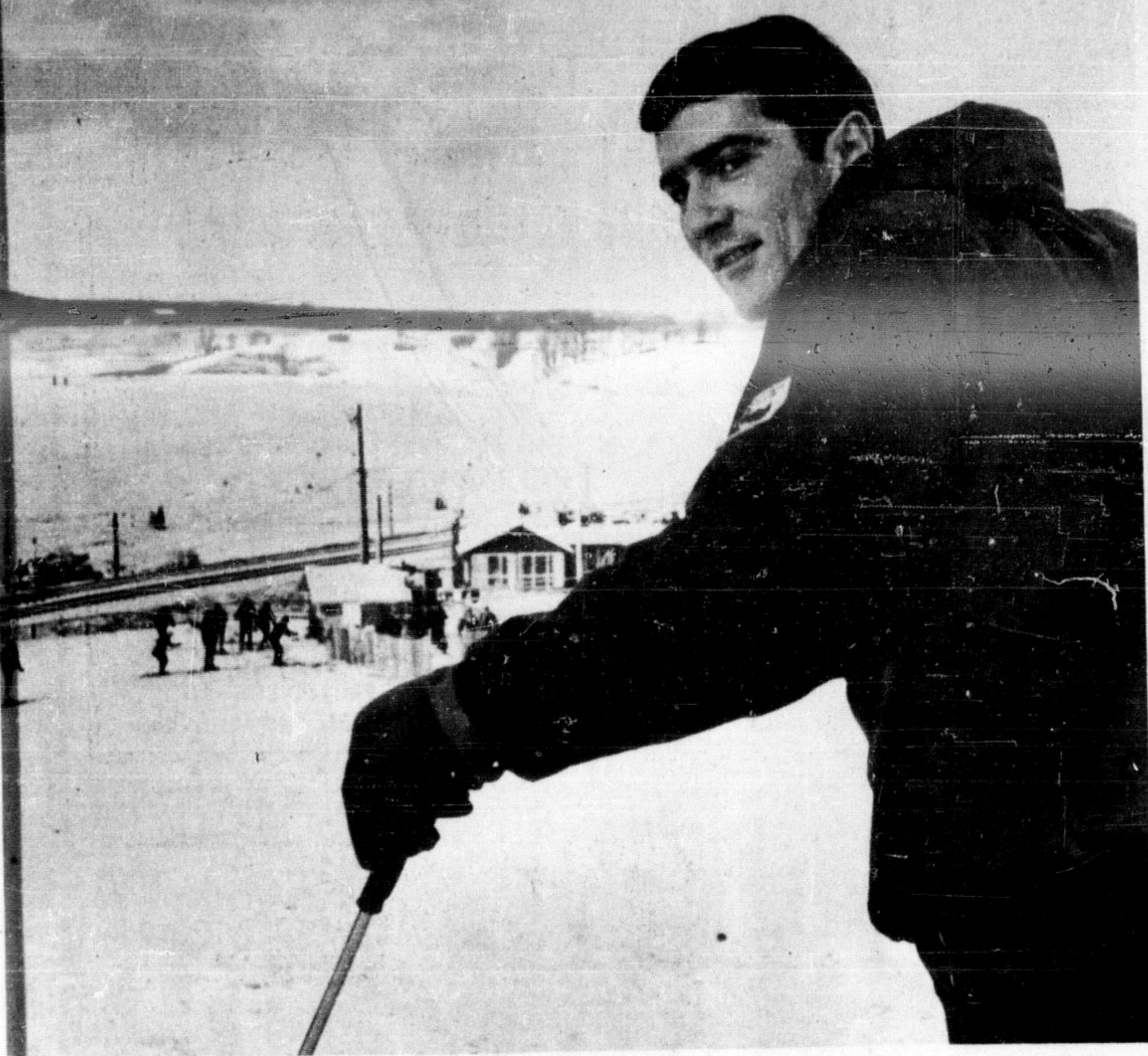
The curve on Bronte St. near P.L. Robertson Mfg. Co. was the scene of a collision Dec. 22 between a vehicle driven by Ted M. Hood of 3190 Base Line Rd. and a tree. Damage to the Hood vehicle was \$125.

On Dec. 23 vehicles driven by Chris Powell of R.R. 3, Milton and Miss Brenda Berry of 384 Kingsleigh Court received \$150

damage each when they collided at Main and Ontario Streets.

A gas pump on property owned by Milton Motor Sales was severed from its base and another sideswiped Christmas Eve in a crash that also did damage to light standards and the window of a brand new car.

The vehicle responsible left the scene but its two occupants were apprehended by Milton Police on Highway 25 south of Milton.



GLEN EDEN'S NEW CHALET looks just as good close up and inside as it does from the main view. Ennio Flumina takes in the panoramic view. (Staff Photo)



AND WHEN NATURE FAILS to provide enough quality snow to make good skiing, the Glen Eden staff spreads their own with snowmakers. Here Ron Coulson demonstrates. (Staff Photo)



THE END OF THE TRAIL for hilltop-bound skiers at Glen Eden comes at the T-bar jumping off spot. Fran Horning and Betty Blench prepare to alight. (Staff Photo)

--Separate School supporters are at the polls today, electing three trustees for the school board from among five candidates.

Airtemp
CHRYSLER ENGINEERED
AIR CONDITIONING

Nadalin Electric Company, Ltd.
INDUSTRIAL AND COMMERCIAL CONTRACTING
SUBSTATIONS AND MOTOR REPAIRS - UNDERGROUND WIRING
POLE LINE CONSTRUCTION - AERIAL FLOODLIGHTING
CUSTOM CONTROL PANELS

24 HOUR MAINTENANCE SERVICE LOU NADALIN

3153 BASELINE RD., MILTON, ONT.
TELEPHONE 878-2208

We continue to offer bargain after bargain on Draperies, Broadloom, Area Rugs and other decorating essentials

AT
Jum Draperies

878-2513 MILTON 8 MARTIN ST.

Down(s) Corner . . .

(Continued on Page B1)

You're just not cooking with gas if you can't answer that one.)

And as for those 11 rings a minute, wouldn't 10 a minute be simpler and less confusing? It's easy counting by 10's but I've always had trouble multiplying an odd figure like 11, especially once I get over 9 x 11. The telephone could be so handy for measuring the minutes if the Bell would just cut down on that one extra ring each minute.

And think of all the money the Bell could save, at the same time as it renders an important public service. I don't know how much it costs the Bell for those three extra "beeps" and one extra ring each minute, but I'll bet they cost money and I'm sure

any efficiency expert could find new uses for the time or money the company would save if they cut them out.

What's that? You think I'm kidding? Just to prove how incensed I am, I think I'll sit down right now and dash off a letter to Arn Blachford, the area manager, and get him to follow this thing up. They might even give him a promotion if the Bell's higher-ups go for the plan and he puts it over as his own idea.

Come to think of it, while I'm on a time-saving spree, I think I won't write that letter. I'll just send Arn a marked copy of this week's newspaper. Might as well carry this austerity program as far as it can go.

Milton Pharmacy
246 MAIN ST.
878-2343
PRESCRIPTIONS
Picked Up & Delivered
FREE DELIVERY

● PRESCRIPTIONS
ELSLEY PHARMACY
24 HOUR PRESCRIPTION SERVICE
878-4492 - After Hours 878-6961
FREE DELIVERY - REVLON COSMETICS
K. H. ELSLEY, B.Sc., Ph.M.

EXPERT BODY WORK

CAN GIVE ANY CAR THAT SHOWROOM-FRESH LOOK
Come in for a complete appraisal today.
BILL'S AUTO BODY
269 Main St. 878-2721
878-3251

WATCH FOR IT!

OPENING OF YOUR NEW CHEV - OLDS DEALER IN MILTON

JACK RICHARDSON
CHEV - OLDS LTD.
No. 25 Hwy. - At 10 Sideroad

START THE NEW YEAR **RIGHT**

B THE RIGHT CAR IN
U THE RIGHT CONDITION AT
Y THE RIGHT PRICE FROM
Y THE RIGHT DEALER

IT'S IMPORTANT!
... THE CHARACTER OF A DEALER ...
ITS REPUTATION ... ITS POLICIES ...
JUST SO IS THE CHARACTER OF A CAR DETERMINED BY
THE REPUTATION OF THE FIRM BEHIND IT.

NOW IS THE TIME THIS IS THE PLACE for the best selection of a new Ford - or a good used car

TRAFALGAR
MOTORS **FORD** CO. LTD.

NOW IN BAGS **DARK AND LIGHT**
FRESH! GOOD TASTING!

GOOD SOURCE OF PROTEIN
NO FATS ADDED
Rite Diet
SPECIAL FORMULA BREAD NET WT. 1 LB.

TAKE THIS COUPON TO YOUR GROCER TODAY