



HALTON PLOWMEN'S ASSOCIATION has been busy in recent weeks making plans for the annual Halton Plowing Match, to be held on Saturday, October 28 on the farm of Stanley Norrish, R.R. 1 Moffat. Here are the directors of the Association. In the front row, left to right, are secretary Jack Taylor, president James Cunningham, first vice-president George Swann,

second vice-president J. Cameron Marshall and agricultural representative Henry Stanley. The directors shown in the second row are Bill Rayner, John Breckon, Bryan Marshall, Brian Cargill, Frank Peacock, Lloyd Stokes, Clifford Wrigglesworth and Roy Currie.

(Staff Photo)

Farmer charges C.N.R. fails to cut own weeds

Esqueing Council was asked by a township farmer to take some action about the alleged reluctance of the Canadian National Railways to cut weeds on their property at their last meeting.

Jack Wagstaffe, R.R. 1, Glen Williams, told councillors the C.N.R. might have ceased to operate the railway bordering his farm, but he was still operating the farm and could get nowhere in correspondence with the company.

"They just pass the buck," he charged.

"It's a never-ending fight to keep grass and weeds out," said Mr. Wagstaffe. "I cut 100 acres right up to the fence and on the other side, weeds are going to seed year after year."

Council decided to send a letter to the railway asking for some action.

Mr. Wagstaffe also complained to council about receiving two separate assessments on his property, which had only one deed. He was advised to sit down with assessor Art Benton to discuss possible solutions.

Two pig litters born in less than six weeks

A sow on the farm of Lorne Masales, near Acton, produced a litter of 10 recently which evokes no surprise. Less than six weeks later, however, 13 piglets were farrowed from the same mother.

All the young pigs were normal and healthy, although two from the first litter died and all of the second succumbed.

The veterinarian said in his long service in the profession, he had never run across anything like this, but had read about incidents in other places.

Normal period of time between litters for pigs is 112 days. The first litter was born August 3; the second September 9.

CLEANERS

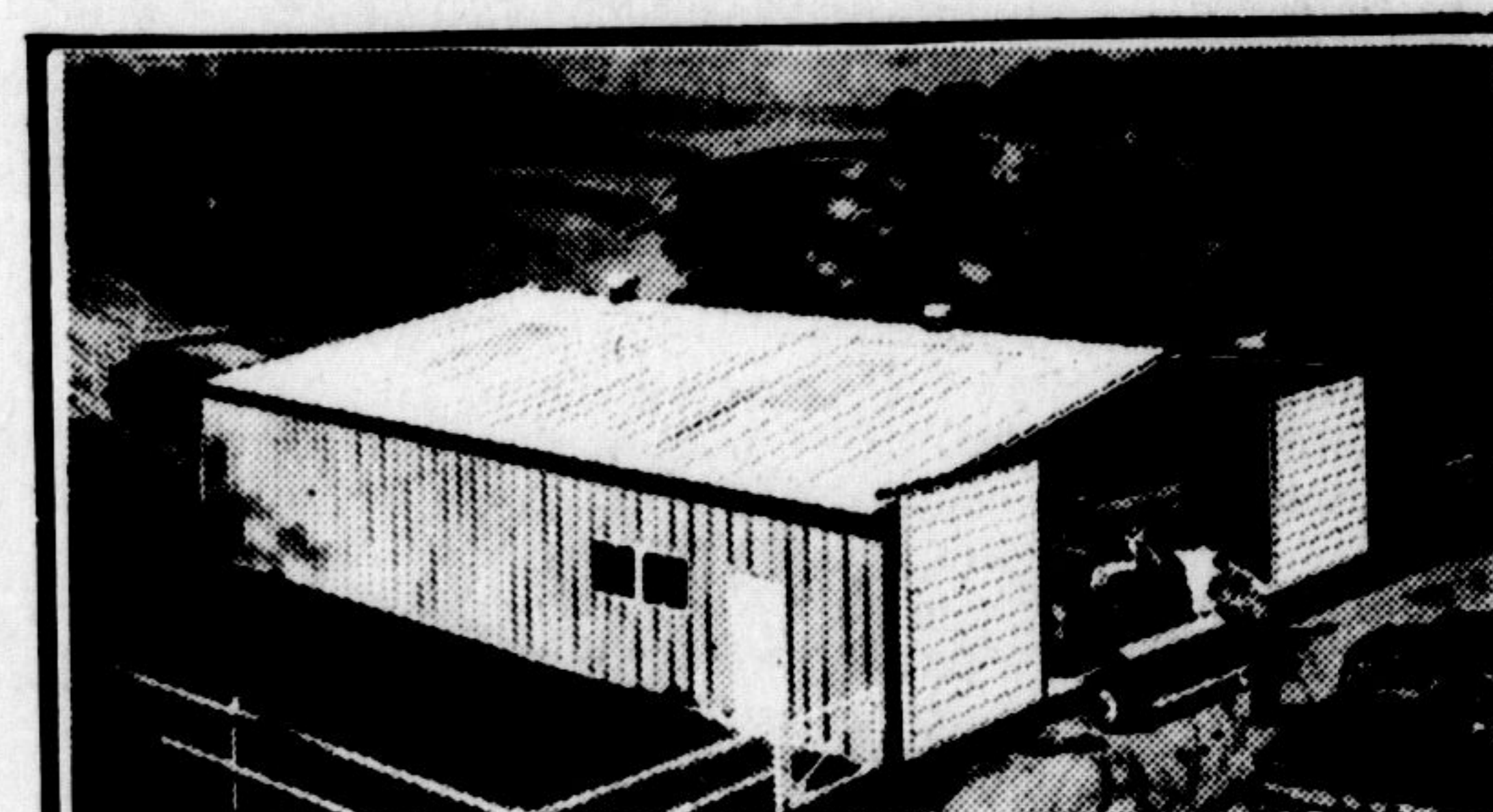
Never mix household cleaners. Because ammonia is good and Ajax is good it does not mean that when mixed they are twice as good! They, or any other cleaners when mixed, can produce Phosgene. This is one of the chlorine compounds used as a gas during World War I, which was very effective in killing and disabling people. Since chlorine is one of the basic ingredients of many cleaners, the combination of two or more different cleaners could produce Phosgene or other dangerous gases.

RESTIVO'S ST. LAWRENCE FRUIT & GROCERY STORE

No. 1 Local NEW POTATOES .. 10-lb. bag 35c
Firm Yellow BANANAS 10c lb.
Crisp Green CELERY 2 stalks for 29c

Duncan Hines
CAKE MIX — 7 Flavors 2pkgs. 79c
First Quality NYLONS 3 prs. \$1.

Can. Packers BEEF BURGERS 55c lb.
C.P. Jubilee BREAKFAST SAUSAGE 55c lb.
Maple Leaf WIENERS 49c lb.
Maple Leaf
Rindless Sliced SIDE BACON 79c lb. pk.



SEE US NOW

for a low price on Canada's finest farm building

The new low look! All Metal. Ranch-type styling. Modern two-tone colour schemes. Yet Butler Farmsted® buildings are low in cost — lower than wooden buildings on a cost-per-year basis. Let us give you a free estimate. Write or call us today.

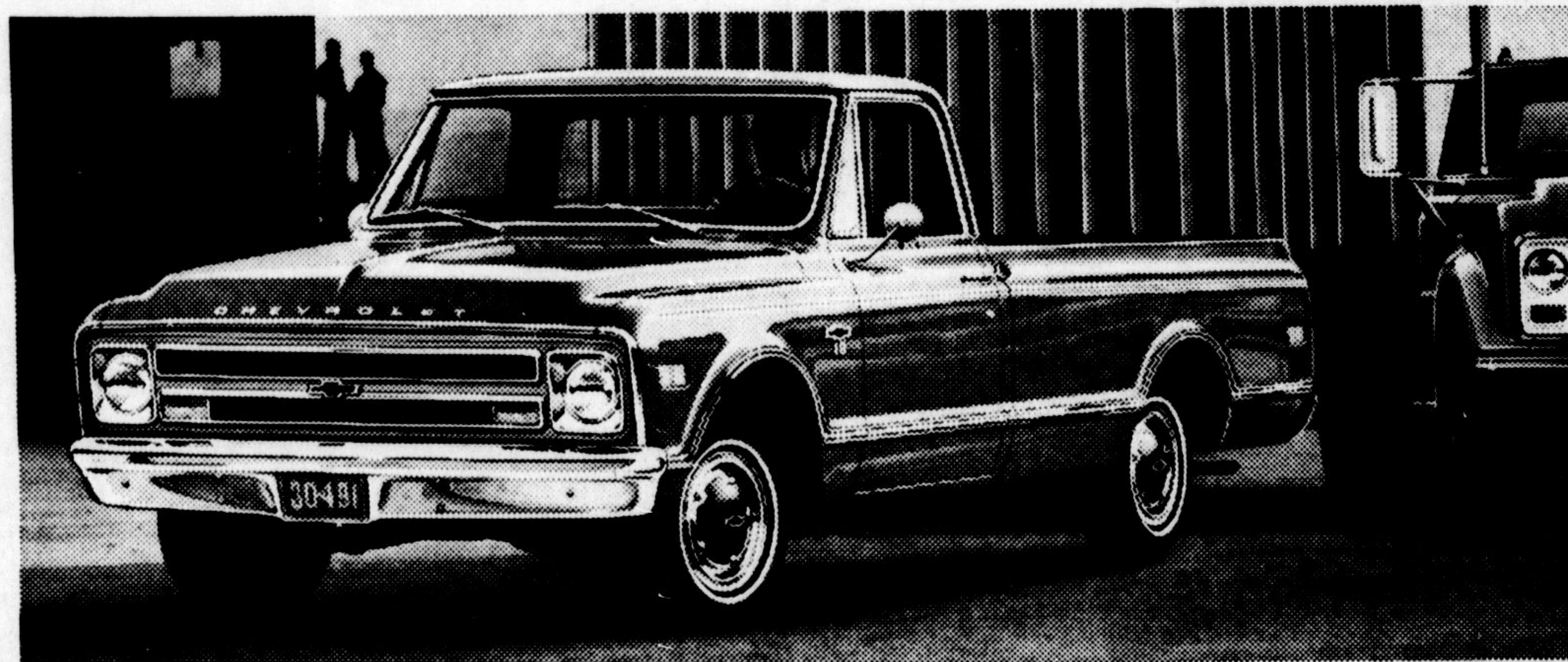


Brookview FARM SUPPLY COMPANY
1221 Bellview Ave. Burlington, Ontario 634-2805



with standout features that stand up to the tough jobs

Chevrolet Truck lays it on the line...



with the '68 Job Tamers

Take Chevy's extra workpower: for conventional pickups in '68, the rugged 155-hp 250 Six is the biggest standard Six you can buy. Or ask for the 292 Six. Want more? Get the brand-new 200-hp 307 V8 — standard in V8 conventional pickups for '68. In all, you won't find a broader range of power in any popular pickup! And leave it to Chevy Trucks to give you a truck-tough cab and body with double-strong construction. Cab, cowl, windshield pillars, roof and door openings on all models... double-wall sides and tailgate on Fleetsides... all double-strong where they should be — to tame the toughest job.



See your Chevrolet dealer now!



"SEE YOUR NEAREST AUTHORIZED CHEVROLET TRUCK DEALER"

Champion Farm Page

Add urea for protein

Corn is mature, heads for silos

By Henry J. Stanley

With the warm, dry weather of the past few weeks, the corn crop has matured very rapidly. Some farmers have started to fill their silos.

If your corn is in the late dough stage, ensile it now before the frosts dry out the ears and lower the vitamin content. At this stage the ear accounts for one-half the dry matter yield of the silage, and the whole plant is between 65 and 70 per cent moisture. If you have a large silo, you can go as low as 60 per cent moisture and still make excellent silage.

However, a small silo with less compaction will not preserve dry silage too well.

In recent years, early maturing corn has been grown for silage. Although it takes more acres to fill a silo, the silage is much higher in energy and contains much less water than the later maturing varieties. It is much cheaper to pump water from the well than build a silo to hold it.

A new question has arisen. Should you add urea to corn silage? Feed grade urea would increase the protein content of the silage and lower the amount

of protein required in the grain mix. If you are feeding two-thirds or more of your dairy cattle roughage requirements as corn silage, you might consider adding urea to the silage. If you feed less than two-thirds corn silage, the protein should be supplied through the grain mix.

Urea should only be added to corn silage which is sufficiently mature, so that there will not be seepage from the silo. If there is seepage, the urea could migrate down towards the bottom of the silo, resulting in too high a concentration at the bottom.

The recommended level of addition is 10 pounds of urea per ton of corn silage. It is usually added at the time of silo filling by spreading the correct amount over the top of the load. Uniform mixing is a necessity.

For beef cattle, there are urea-calcium additives to be applied at 20 lb. per ton of silage. The same precautions should be taken as for dairy cattle. The calcium additions are not recommended for dairy cattle, as no advantages have been shown by research to date.

Acton 4-H calf, forage clubs winners at achievement day

By Geoff Taylor

Keith Aitken, president of Acton 4-H Forage Club, placed first in the Oat Class for Acton 4-H Forage Clubs, in addition to receiving first-place ribbon for his Leaf Collection.

Keith was followed closely by Carol Swackhamer, who received second in both her Oat and Leaf Collection exhibits. Third place was Rae Swackhamer, with his Oat entry, and 12th in the Leaf Collection. Laura Tryssenaar received a first-place ribbon for her Forage entry, consisting of one bale of hay, first cutting. She also received a third place in the Leaf Collection.

In the Barley entries, Bob Leslie received first, followed by his two sisters, Leah, second; and Norma, third. Their Leaf Collection placed 11th, 9th and 13th.

In the Acton 4-H Calf Club's Achievement Day, Keith Aitken was declared top showman, followed by Bill Lasby, second, and Marjorie Johnston third.

The winners of the Calf Classes were as follows:

Junior Holstein Conformation Classes — first, Wayne

Medland; second, John Brown; third, Carol Somerville.

Senior Holstein Conformation Classes — first, Erica Strokov; second, Susan Murray; third, Marjorie Johnston.

Senior Shorthorn Heifer Class — first, Keith Lasby; followed by Keith Aitken, second, and Norma Leslie, third.

Bill Lasby topped the Steer Class, followed by his brother Bob who was second, and George McPhail, third.

The judge for the Acton 4-H Calf Club's Achievement Day was Dave Pelleterio, Feed Department, U.C.O., Weston.

TRACTOR PASSENGERS

Quotation from a recent newspaper, "Yesterday a 13-year-old boy was crushed to death when the farm tractor on which he was riding upset."

Note that "on which he was riding." How many of our tractors have passenger seats? None, except for a few European models that have a seat wide enough for two. Make it a "No passenger" rule. Don't you be responsible for a child's death.

Centennial contest for Halton plowmen

A new centennial year class for plowmen is one of the features of this year's annual Halton County Plowing Match. The match is scheduled for Saturday, October 28, at the R. R. 1 Moffat farm of Stanley Norrish, it was announced following a directors' meeting in Milton last week.

The centennial class is a change from the popular "businessmen's" match that has been held in previous years. This year, anyone who has ever plowed in a Halton County match in the past 100 years is invited to participate. J. M. Ledwith of Milton has donated a trophy for the winner.

Norval Jerseys

Jersey class leaders for the month of August have just been announced by the Canadian Jersey Cattle Club.

In the senior two-year-old class, Oak Meadow Stoneboy Tammy, a daughter of Don Head Milestone Belleboy, owned and tested by Mrs. S. L. Eva Harper, Georgetown, had the highest record. At two years 197 days, in 305 days, she produced 10,112 lbs. milk, 511 lbs. fat, 5.05 per cent, a Silver Medal record.

The second highest record in this class was made by Rosegate Lady Bijou, a daughter of Generation Sir Bijou, bred and tested by Mac Alexander, Norval. In 305 days, at two years 324 days, she produced 9,130 lbs. milk, 532 lbs. fat, 5.83 per cent, a Silver Medal record.

Attention Farmers

Our Seed Cleaning Plant is now cleaning wheat for fall planting.

CALL US FOR A SEED CLEANING APPOINTMENT TODAY

"SEED WHEAT"

We have a good supply of Canada No. 1 Genesee seed wheat on hand for fall planting. This wheat is of top quality, treated, and packed in new bags.

"GRAIN AERATOR'S"

Keep your combined grain in good condition in your bins by keeping it cool with a grain aerator. We have a good supply on hand.



Order yours today.



We stock a full line of **MASTER FEEDS**

FEED MASTER FOR RESULTS THAT COUNT!

MASTER FEEDS

(STEWARTTOWN)

R.R. 2, Georgetown — Dial 877-3512

DON'T WAIT, GO MODERN WITH BP



and open your doors to *Comfortable Living* with The NEW MODERNAIRE OIL FURNACE Complete with a Well Designed and Engineered Heating System By SHIPTONS HEATING call FRED ROBBINS 878-6538 MILTON ask about the B.P. Finance Plan