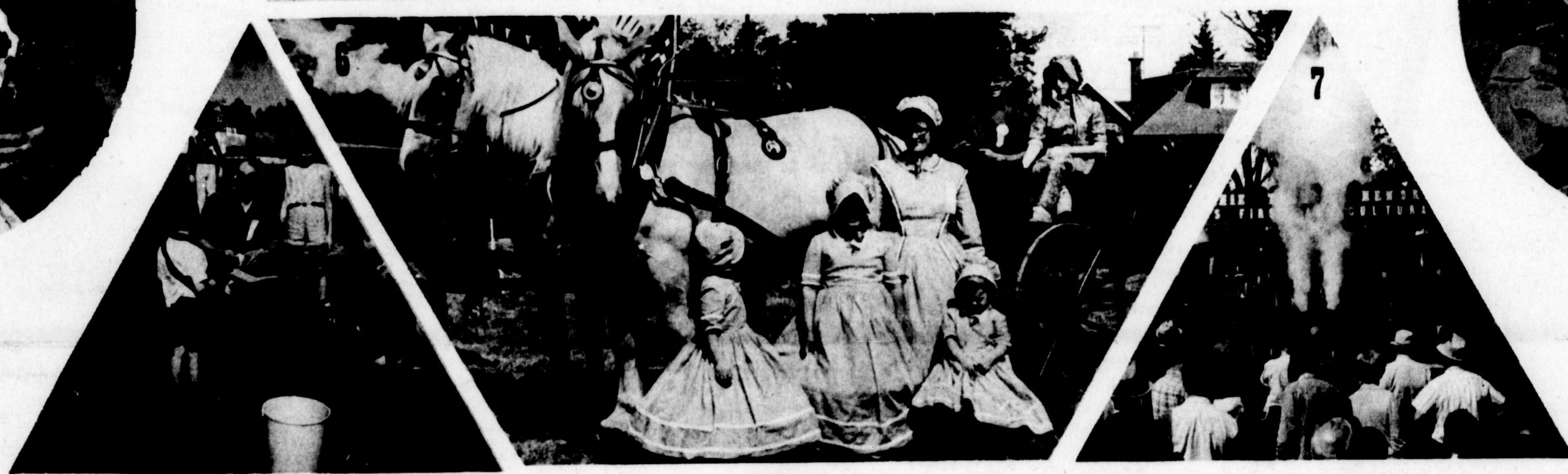
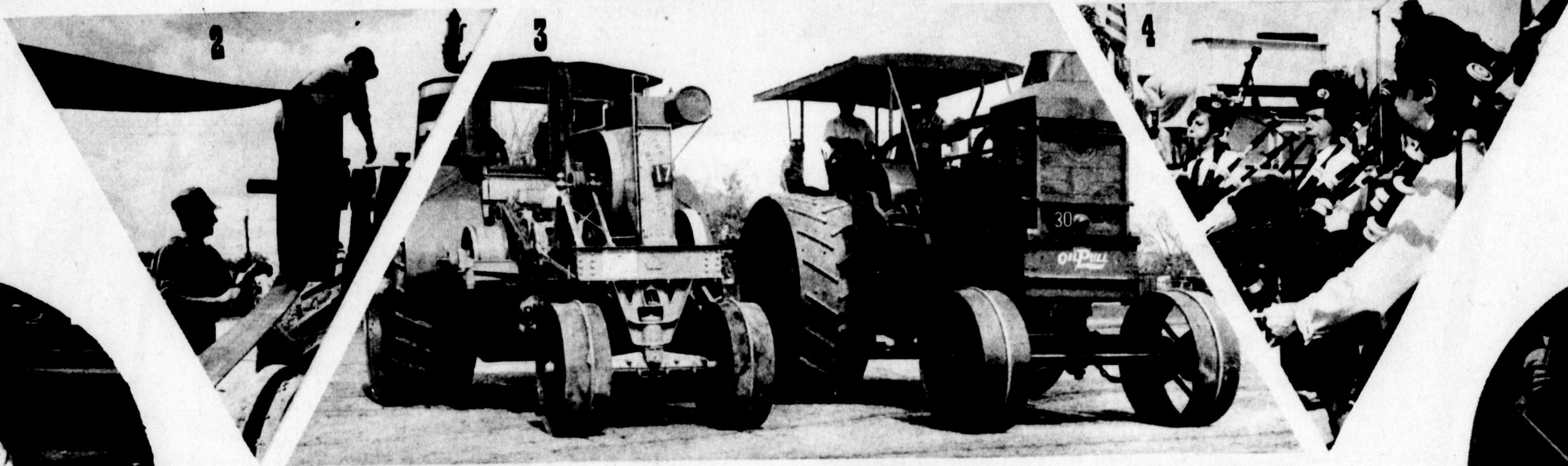
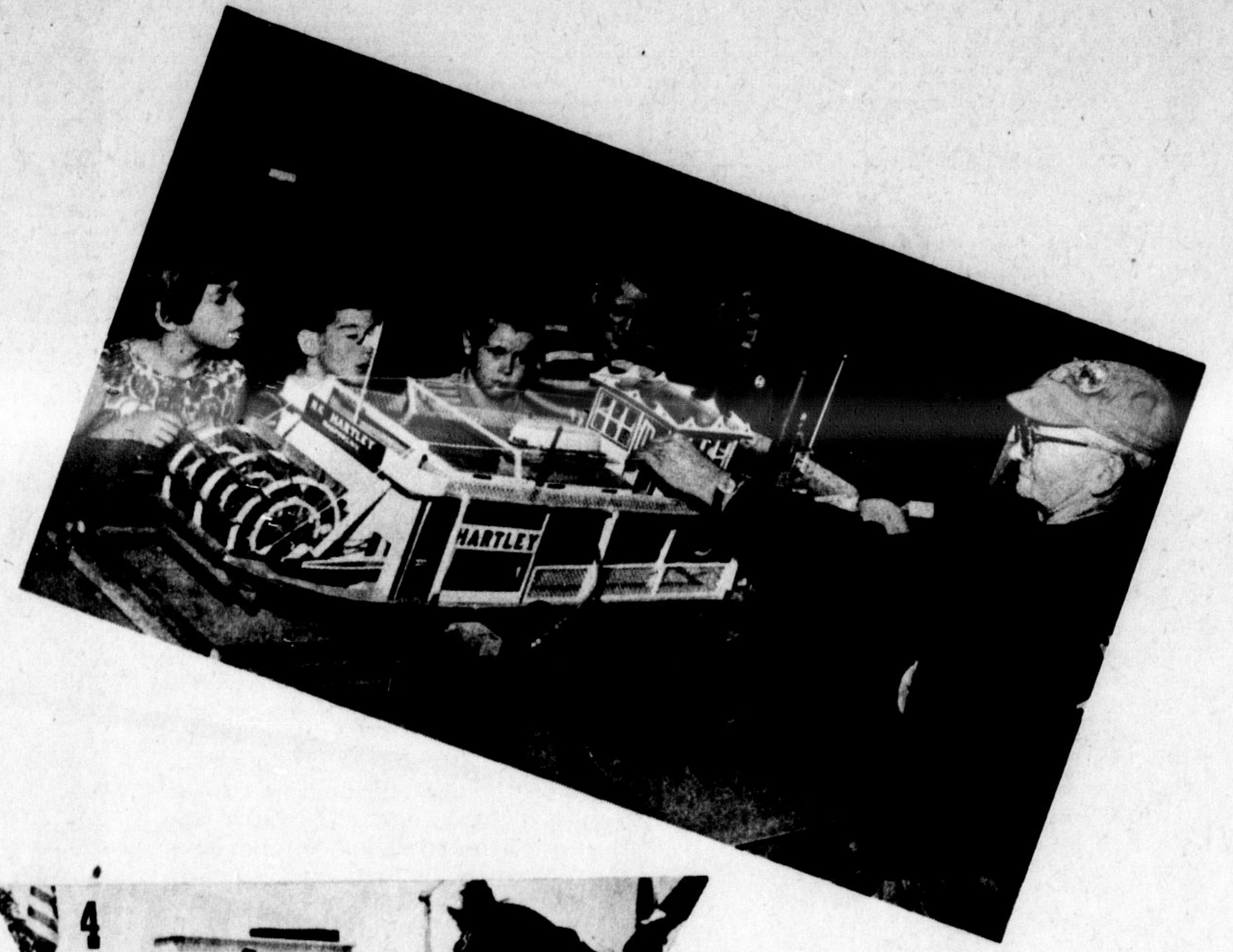
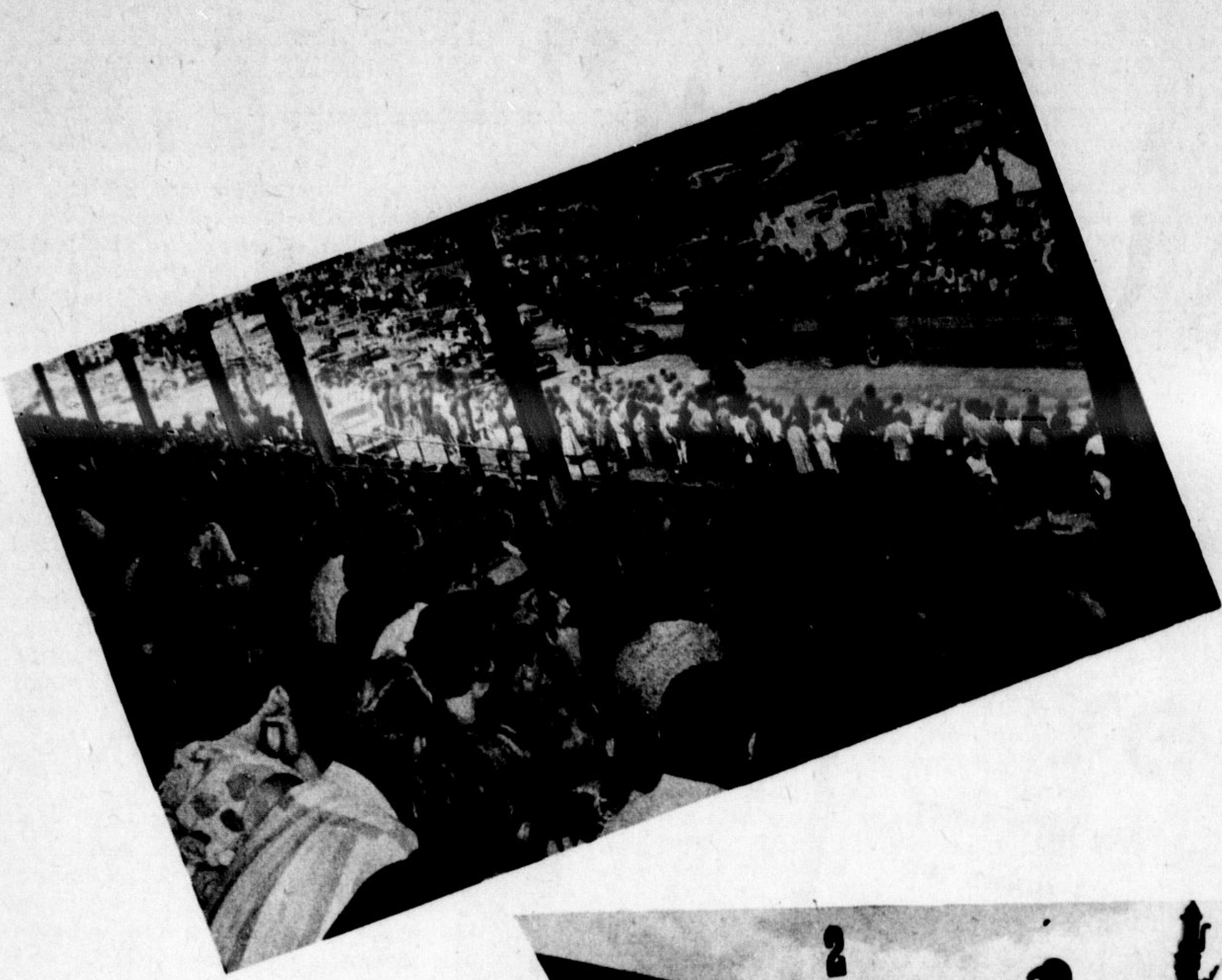


Memories of Steam-Era 1967

MILTON, ONTARIO, WEDNESDAY, SEPTEMBER 6, 1967



Superb show relives past for Canada's centennial year

STEAM-ERA '67 will go down in history as one of the best shows ever presented by its sponsors, the 200-member Ontario Steam and Antique Preservers Association Inc. From Friday morning until Monday at suppertime, with a break on Sunday, the Milton Fair Grounds took on the air of an old-time farmers' machinery convention as the exhibits recalled the best of yesteryear.

DESPITE A conglomeration of other centennial events in the district this weekend, the steam reunion was well patronized by about 21,000 people who marvelled at the scope of the exhibits of Canadian agricultural history that filled the fair grounds. Pictorially, here and elsewhere in this week's souvenir issue, we present just some of the highlights of a show too large to ever be recorded on film:

Above Left

THE GRANDSTAND overlooking the centre of activities was filled to capacity at several points through the weekend. Here a crowd watches Saturday's parade around the race track. They thrilled to see the historical steam engines, gas tractors, gas engines, antique cars and trucks and other exhibits of yesteryear.

Above Right

STEAM ENTHUSIAST Marion G. Hartley of Gasport, New York explains the fine points about his home-made steam paddle boat to five interested and wide-eyed young visitors. The onlookers are Robert Lang of Burlington, Sharon and Desmond Donovan of Drumquin, and Pat and Ricky Young of York. It was one of the intriguing exhibits in the models building.

In the Symbol

1

ALL DOLLED UP in the kind of clothes that granny used to wear are Miltonians Dawn Broatching and Debbie Corbett, cranking up an antique gas tractor that was an entry in Saturday's parade through town. The girls were two of many local young misses who donned old fashioned clothes to ride in the parade.

2

BELTING RACES were good attractions through the weekend show, but they never did prove whether or not a steam engine was faster than a tractor. Scores at the end of half a dozen competitions showed both factions were about even. Here's Gerald Garbutt of Milton belting up his antique Rumely tractor.

3

THE LARGEST gas tractors in the show were the 40-80 h.p. Minneapolis owned and restored by Sherwood Hume of Milton on the left, and a 30-60 h.p. Rumely that is owned and restored by Norm Schell of Woodstock, right. Both are about 12 feet high, 23 feet long and 12 feet wide. Norm's Rumely won him a trophy for the best restoration job.

4

LADY PIPERS from the Milton Girls' Pipe Band were on hand Saturday and Monday to entertain crowds at the fair grounds. Here three young members puff up their cheeks as they fill up their pipes with more air. The girls are a popular attraction wherever they go.

5

A MODEL TRAIN owned by Harry Allin of Etobicoke drew a crowd of happy youngsters whenever it was running up and down its miniature tracks in the fair grounds. Everybody wanted a ride on the authentic reproduction which ran on steam on its narrow gauge rails.

6

THE RAYNER FAMILY of Milton made a pretty sight with their horse-drawn democrat and old fashioned costumes. Bill Rayner and Marguerite Cragg are shown in the buggy while Mrs. Gordon Rayner and daughters Helen, Debbie and Susan stand in front in their look-alike costumes. The horses King and Bill were also popular, especially with the young fry.

7

STEAM POWERED calliope or steam organ, the only one of its kind in Canada, is shown entertaining a crowd at the reunion. Operator Dave Thomson can get about eight tunes out of the 70-year-old monstrosity. It was drawn by a mule and five horses this year. The calliope takes a crew of four — two to drive, one to stoke up the boiler, and one to play the tunes.

Left Circle

FIRST "QUEEN" of the Steam-Era was Mrs. Hattie Shillinglaw of Mount Albert, the wife of the Steam-Era president Bill Shillinglaw. She is shown with her crown, sash and a dozen red roses presented to her after the judges named her the winner.

Right Circle

ENJOYING A RIDE on an antique Farmall tractor is Lorrie Tom, Milton. The youngsters had fun just sitting on the old pieces of farm equipment, but it was more fun if you got a ride on one of them.

Bottom Photo

SIX CONTESTANTS in the "Queen of the Steam-Era" competition on Saturday posed before climbing onto the stage to give their speeches. All wore period costumes, gave a brief speech about the reunion, and were interviewed by two male judges. Mrs. William Shillinglaw from Mount Albert was winner, Mrs. Lorna Rogers from Stony Creek second, and Mrs. Bern Porter of Woodstock third. Shown from the left are Mrs. Rogers, Mrs. Joanne Clements, Mrs. Shillinglaw, Dorothy Calder, Mrs. Porter and Pat Howe.

