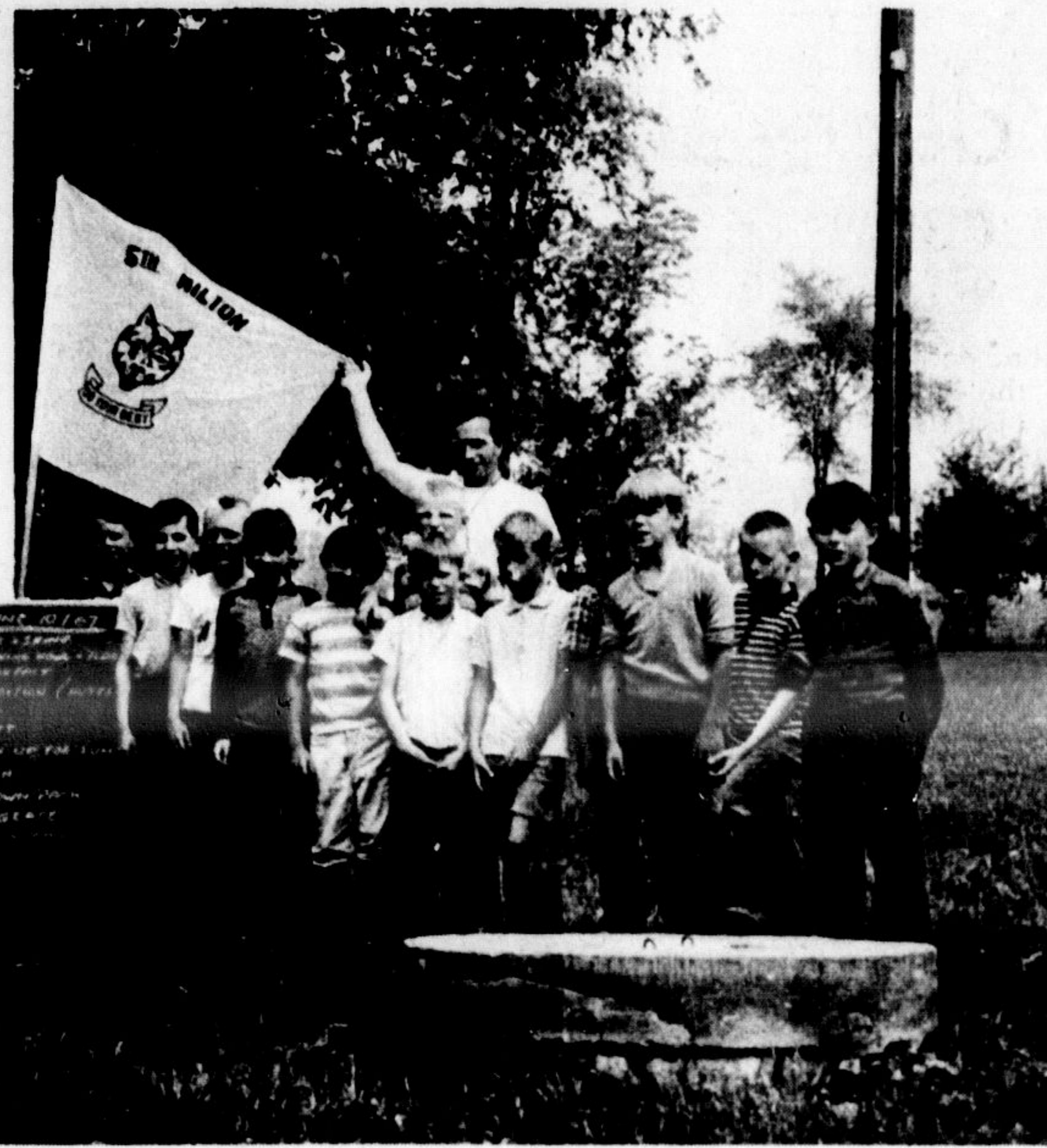




AROUND THE FLAG a group of 24 cubs and leaders gathered at the weekend camp of the Fifth Milton Cub Pack. The pack left Friday and returned Sunday after a weekend of hikes, crafts, badge and star work, sing songs, campfires and games.



The group camped at Pine Ridge Camp near Henderson Park under leaders Dudley Ervin, Ken Cann, John Goulding, Dieter Claer and Lavern Blacklock.

(Staff Photo)



TEMPTING WAS THE FOOD at the Fifth Milton Cub Camp on the weekend at Pine Ridge Camp, as indicated by the eager looks on these two youngsters. From the left are Doug Ervin and Bill Fay while cook Lavern Blacklock maintains a watchful eye.

The United States had an average of 50.5 persons per square mile of land at the end of the 1960 census.

Every year, an estimated 500 million people suffer from disabling diseases associated with unsafe water supplies, according to the World Health Organization.



ELECTRICITY

IS OUR BUSINESS

Don't be a finkerer with Electricity. Call an expert for

- ★ HEATING
- ★ WIRING
- ★ NEW CIRCUITS
- ★ ADDITIONAL OUTLETS
- ★ OUTDOOR LIGHTS

FEATHERSTONE ELECTRIC

878-6378

Wrought Iron
Railings, etc.
PHONE
878-9827

Proclamation
TOWNSHIP OF NASSAGAWEYA

WHEREAS Canada has achieved 100 years of unity and progress since the consumation of Confederation; AND WHEREAS the Township of Nassagaweya deems it fitting to mark this significant occasion; AND WHEREAS special celebrations have been arranged by the citizens of the Township;

I HEREBY PROCLAIM, by the authority vested in me,

NASSAGAWEYA CENTENNIAL CELEBRATION DAYS

ON JUNE 23, 24 and 25;

and respectfully request all citizens to participate in the events arranged to mark the Centennial of the Dominion of Canada.

WILLIAM J. COULTER, Reeve,
Township of Nassagaweya

GOD SAVE THE QUEEN

Down(s) Corner . . .

(Continued from Page B3)

exhibits but don't go to the Meditheatre unless you have a strong stomach. Their film on open heart surgery, birth of a baby and treatment of Parkinson's disease are starkly realistic and an average of 10 viewers faint per 20-minute showing.

If you don't take them too seriously, you'll get a good laugh out of the Russian and Cuban pavilions. They're full of Communist propaganda.

I enjoyed the international photography exhibit where some of the world's greatest lensmen pictured man and his environments. I'm sure it would please most Expo visitors but the industrial design pavilion which is grouped with the photo show was a bore for anyone but an industrial designer.

While I looked at photos, my wife traipsed through the art gallery and reports it was a grand show, featuring 180 of the world's best works of art.

Habitat, the new concept of urban housing, was a pleasant surprise. We had seen it from the outside during a press tour in January but on inside tour in May confirmed it was a realistic answer to man's housing problems. About

25 of the homes in the Habitat complex are open for viewing but you only need to see two or three to get the overall picture.

We were all impressed with the cleanliness of the Expo grounds. I promised myself I wouldn't compare Expo with the C.N.E. and I won't have to — there is no comparison when you think of the overall tidiness of the Montreal fair. Instead of waiting for the discards and debris to accumulate and staging a big closing-time clean-up bee, Expo has men on the grounds all day long to sweep up cigarette butts, plus plenty of refuse bins scattered liberally through the grounds.

Getting to Expo is easy. They claim there is still some accommodation left. Highway 401 from Milton takes you practically right to the site of the fair. The bus and Metro connections are easy from all over Montreal and the two huge parking lots on the north shore provide a free bus service right to Expo once you're parked.

And oh, those miniskirts! And those chaming hostesses in all the pavilions! Nuff said.

—The town's new front end loader is busy at the sanitary disposal site.

JANITOR SERVICE

OFFICES STORES INDUSTRY

Window Cleaning and Janitor Service
Call Us For Estimate
MILTON JANITOR SERVICE
878-6388

鹿都唐餐館

SUNDAY DINNER SPECIAL \$1.25

CREAM OF CHICKEN SOUP
CHEF SALAD
BAKED HAM DINNER & PINEAPPLE SAUCE
MASHED POTATOES OR FRENCH FRIES
FRESH GREEN BEANS
RICE CUSTARD PUDDING

FOR RESERVATIONS PHONE 878-9061

We Are Open Every Day Throughout the Year

LIDO RESTAURANT

181 Main AIR CONDITIONED Milton

Best catch made good big breakfast

Fishermen's luck has been good in the fishing areas maintained by the Credit Valley Conservation Authority, reports superintendent Norm McMahon.

Best catch yet this spring was that of Steven Petruck, 62 Queen St. S., Streetsville. He pulled in a five pound, 18½ inch speckled trout while camping recently at Terra Cotta Conservation Area. No picture of the prize catch is available because Mr. Petruck was fishing for his breakfast and he was hungry!

The Credit Valley Conservat-

ion Authority, with the co-operation of the Department of Lands and Forests, stocked the lakes at Terra Cotta and the Credit River at Belfountain this spring. This is a yearly project of the Authority and makes for excellent fishing. Just before fishing season opened, 5,000 trout were ladled into the area lakes and the river.

Mr. McMahon reported that many two and three pound trout are being caught in the conservation areas.

—May was beautification month but you can still continue your centennial year home and garden beautifying in June. Get the habit — it's catching.

Humane management always has less problems.

ARTHUR A. JOHNSON, O.D.
Optometrist

Tuesday
9 a.m. to 5 p.m.

Friday
9 a.m. to 9 p.m.

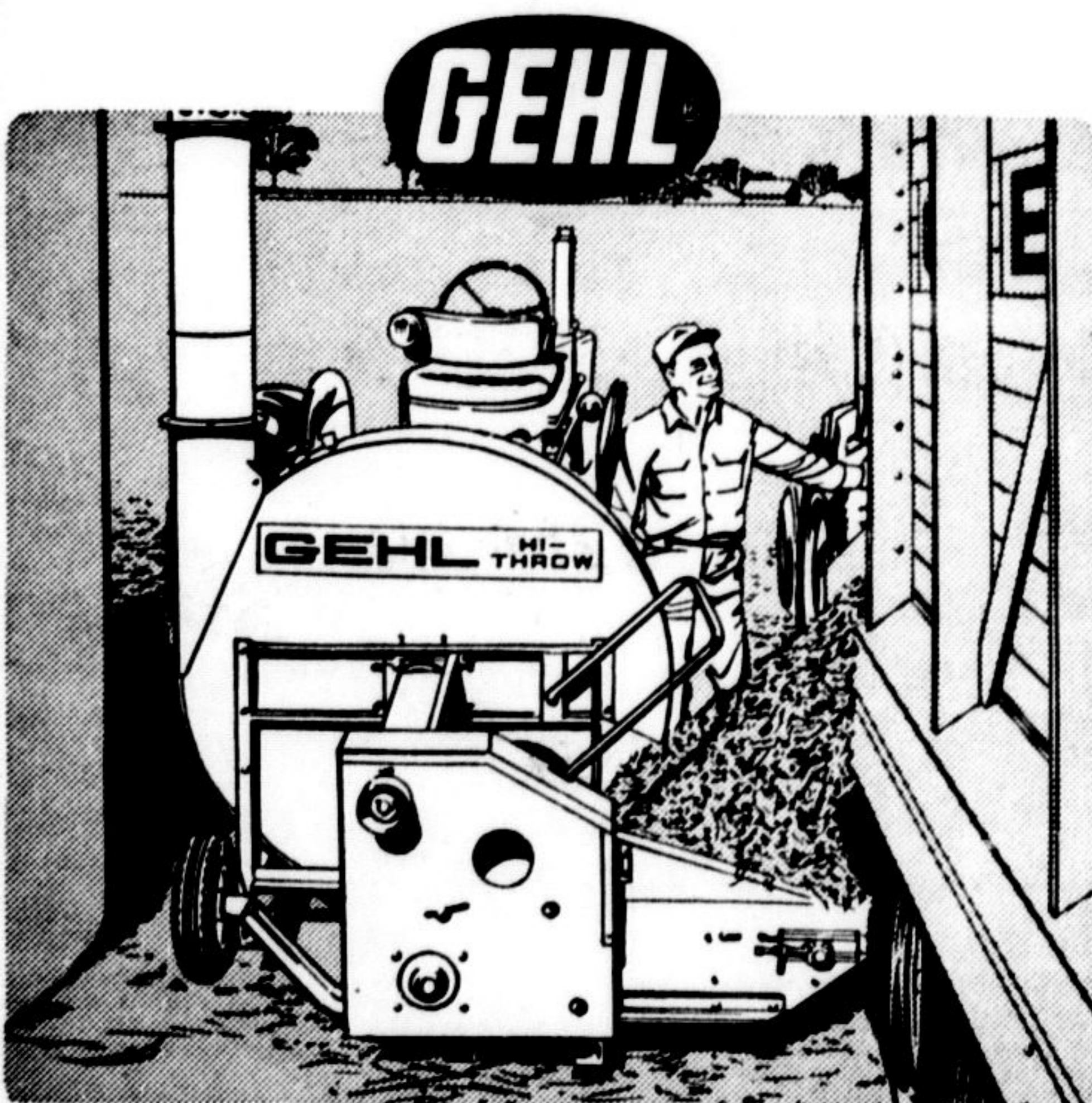
184 MAIN ST., MILTON
(Davis Jewellers Bldg.)

NEW! GEHL "HI-THROW" 55" BIG-CAPACITY BLOWER

The all new, 55-in., six-blade Gehl FB88 Hi-Throw blasts silage or haylage to any silo height, at unlimited capacity.

Low 20-in. hopper and recessed wheel virtually eliminate spillage regardless of the unloading box you use.

- CHECK THESE: • Direct PTO drive • Triple #67 chain conveyor for positive feeding to 10-in. diameter auger • Hopper 20-in. high, 30-in. width (extends beyond fan housing) • Six-blade fan delivers full load to 9-in. blower pipe • Throw-out safety clutch • Adjustable fan housing • Rugged 10-gauge steel sides • Water intake opening.



Make us Prove it with a Demonstration!

MILTON EQUIPMENT CO. LTD.

BASE LINE — MILTON — 878-2121

Easy as 1 2 3 4 5.

- 1** You're certain of getting a really good used car because only exceptionally good used cars are chosen to carry the Goodwill sticker.
- 2** You may be sure your Goodwill Used Car has been inspected and reconditioned. It's clean, ready to go, all spruced up.
- 3** Goodwill cars all carry a written warranty. You can have confidence in your purchase, and it shows your Goodwill dealer's faith in the car he sells you.
- 4** Goodwill cars are sold only by your Pontiac-Buick dealer. He has a stake in your community. And a fully-equipped service organization to back up your purchase.
- 5** Because your Goodwill dealer handles best-selling Pontiacs and Buicks, you'll always find the widest selection of good used cars on his Goodwill lot.

And don't forget Goodwill Used Trucks. They're the cream of the crop too!

MILTON MOTOR SALES PONTIAC

BUICK ACADIAN
PHONE 878-2355 MILTON



Your authorized Goodwill - Pontiac - Buick - Beaumont - Acadian - Vauxhall - GMC Truck Dealer

4% CHEQUING ACCOUNTS

Interest starts the day you open your account and is credited every 6 months figured on the minimum quarterly balance. Free chequing privileges!

4½% SPECIAL SAVINGS

Interest is reckoned on the minimum monthly balance from the day of your first deposit. No cheques may be written (withdrawals in person or by mail) so you can really save!

5% MONTHLY SAVINGS

\$7.33 deposited monthly will give you \$500 in 60 months! \$14.66 deposited monthly will give you \$1,000 in 60 months!

6% GUARANTEED INVESTMENT CERTIFICATES

(Term Deposits) Purchase your Guaranteed Investment with any amount from \$100 up, for a term of from 1 to 5 years. Interest paid half-yearly or you may leave it to accumulate 'til due!

Choose the Accounts that Suit You Best!

MILTON
252 Main Street — 878-2834
LORNE SKUCE, Manager

LOCAL DIRECTOR — Dr. C. A. Martin, Vice-President
NORTH TOWN ADVISORY BOARD
John T. Armstrong, Chairman

Reford Gardhouse, Maurice C. Beaty, Michael Ledwith, John Goy, Dr. B. D. Young

CONVENIENT OFFICE HOURS
Mon. - Thurs. 9.00 - 5.00 — Fridays 'til 6.30



HALTON & PEEL TRUST & SAVINGS COMPANY
Member Canada Deposit Insurance Corporation