

Partners* in building Canada's second century of progress . . .



Focal point of the new grouping of buildings at the school is this clock tower located between the Administration and Senior School Buildings.



Skilled workmen are an important part of the 'facilities' of Frid Construction so they share the honors in a job well done!

The Ontario School for the Deaf — The Frid Construction Co. Limited

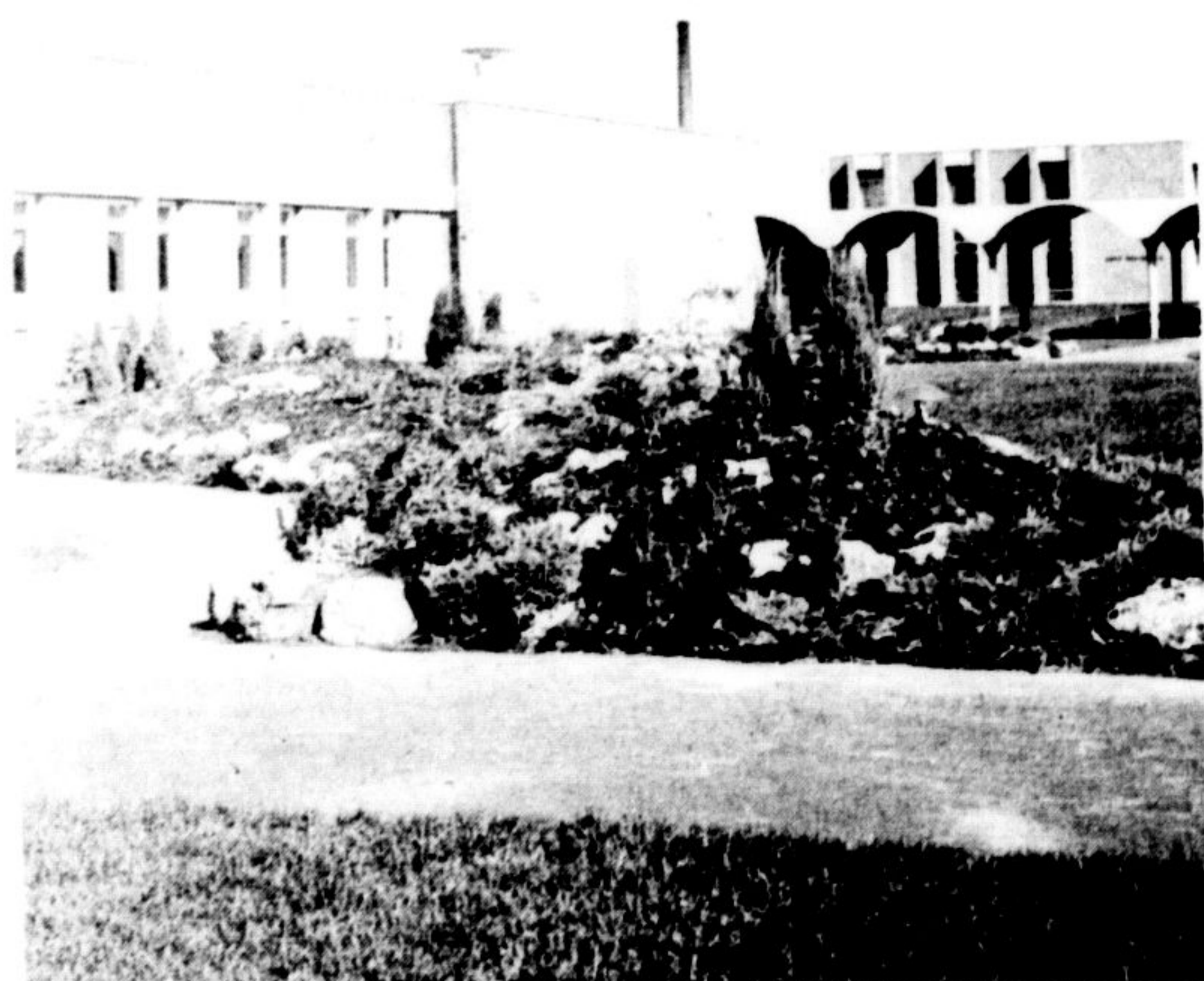
The completion of the second phase of the Ontario School for the Deaf is an outstanding contribution to the Province's modern educational facilities. Here, in the beautiful surroundings of this hundred-acre complex, young people handicapped by deafness are educated and vocationally trained to lead normal, useful and happy lives . . . Productive citizens of Canada's future!

The big challenge in planning the school was to develop a total-living atmosphere which would soften the "institutional" character of the project. This has been successfully achieved through the skilful blending of architectural motifs with effective landscaping and canopied walks connecting various buildings.

The awarding of this 4½ million dollar, second-phase contract to Frid Construction was a satisfying sequel to the firm's work as contractor for the first phase completed in 1963. It is the type of project which, through long experience, Frid is ideally equipped to build.

In effect, the new additions represented four individual projects requiring the utmost in co-

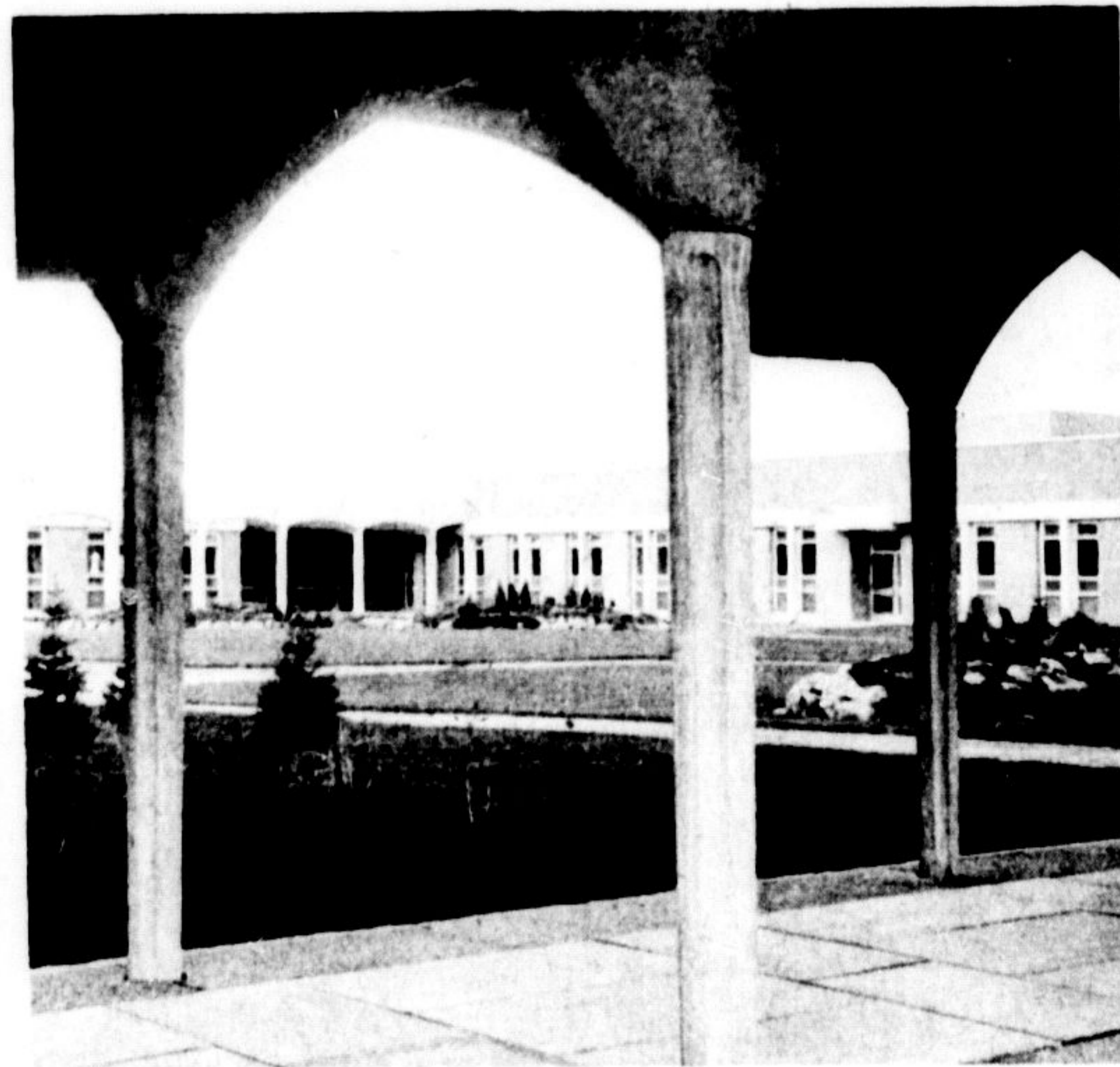
ordination between Frid personnel and the vital services of many sub-contractors. The Senior School with its Academic and Vocational wings . . . The Sports Building with its swimming pool, gymnasium etc. . . . The Boys' Residence . . . The Girls' Residence — Each was integrated into the master plan on the basis of sound, economical construction principles!



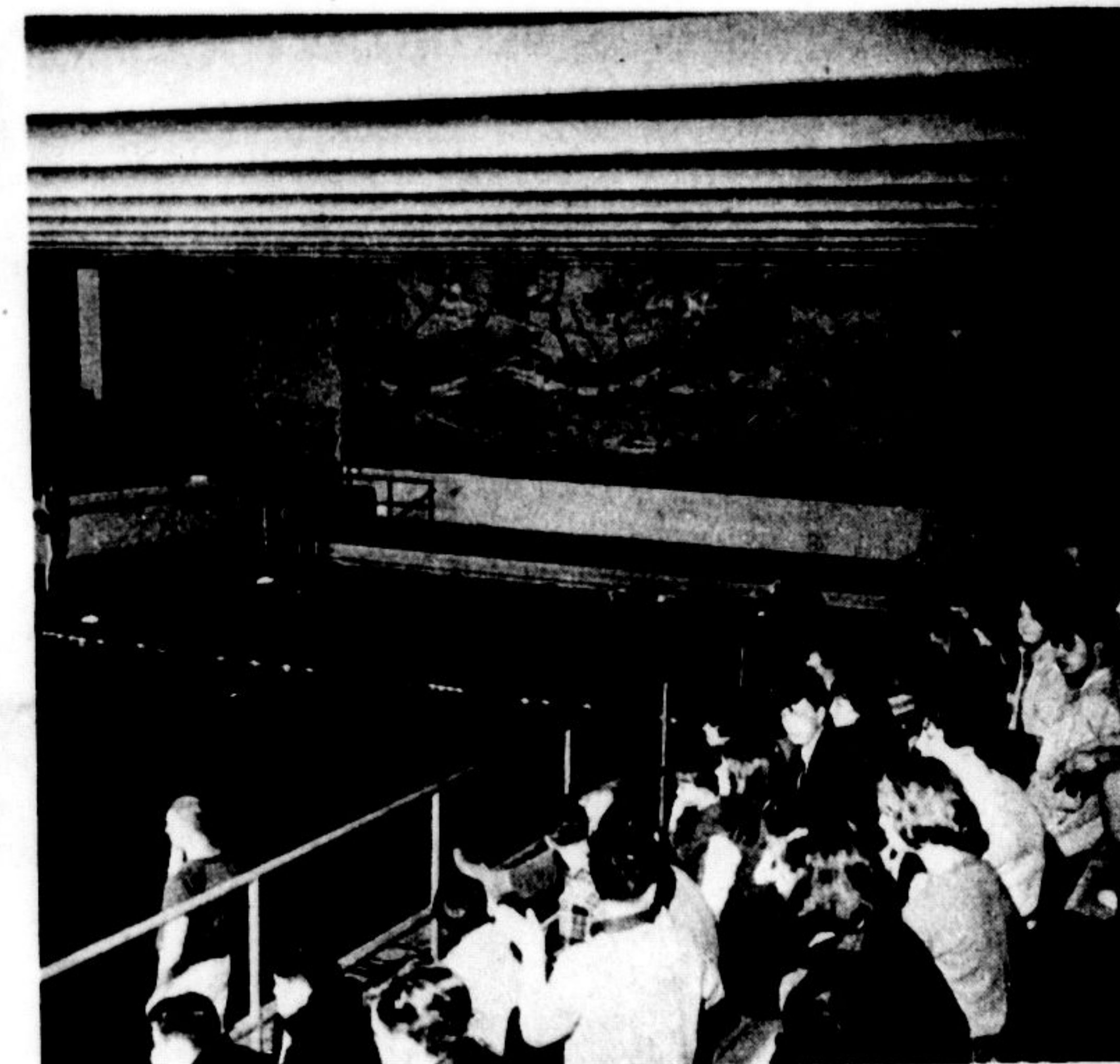
The court between the Academic Wing and Vocational Wing of Senior School building — typical of the beautiful landscaping.



A distinctive feature of the school complex are the canopy-covered walks between the buildings.



An interesting cloistered effect is seen in this view of a court photographed from beneath the canopy.



The two wings of the Sports Building meet at swimming pool.



Architect's sketch indicates building locations:

1. Powerhouse and Laundry
2. Senior Vocational School
3. Senior Boys' Residence
4. Double Gymnasium with Swimming Pool
5. Senior Girls' Residence
6. Administration
7. Hospital
8. Junior Residence
9. Junior School and Dining Rooms
10. Staff Residence and Senior Officials' Homes

THE FRID GENERAL CONTRACTORS
CONSTRUCTION COMPANY LIMITED
Head Office: Hamilton, Ontario

Chief Architect:
D. G. CREBA
Dept. of Public Works, Ontario

Associate Architects:
MORANI, ROUNTHWAITE & DICK

Consulting Engineers:
C. D. CARRUTHERS & WALLACE, CONSULTANTS LIMITED

NICHOLAS FODOR & ASSOCIATES LIMITED

Major Sub Contractors:

Goodram Bros. Limited	Hamilton
Ainsworth Electric Co. Ltd.	Toronto
Gilbert Steel Limited	Malton
John Kenyon Limited	Hamilton
John E. Smith & Son	Hamilton
Westeel-Rosco Limited	Toronto
Peerless Enterprises Ltd.	Toronto
Kent Tile and Marble Co. Limited	Hamilton
P. A. Sherwood Windows Ltd.	Toronto
The Consumers Lumber Co. Ltd.	Hamilton
George and Asmussen Limited	Kitchener
Howden's Hardware Distributor, Div. of D. H. Howden & Co. Limited	London
Adanac Ornamental Iron Works Ltd.	Hamilton
Beer Precast Concrete Ltd.	Scarborough
Braun's Landscaping & Nursery Ltd.	Hamilton
Strand Millwork Limited	London
Frankel Structural Steel Ltd.	Toronto