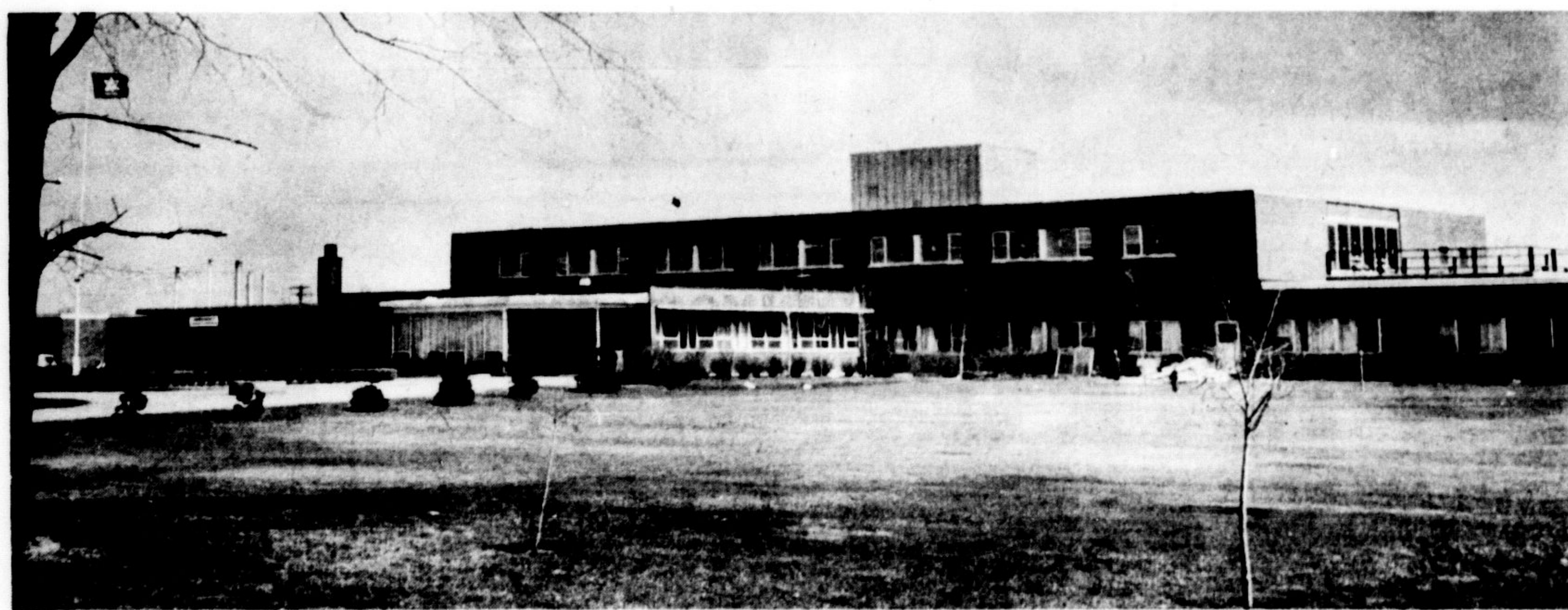
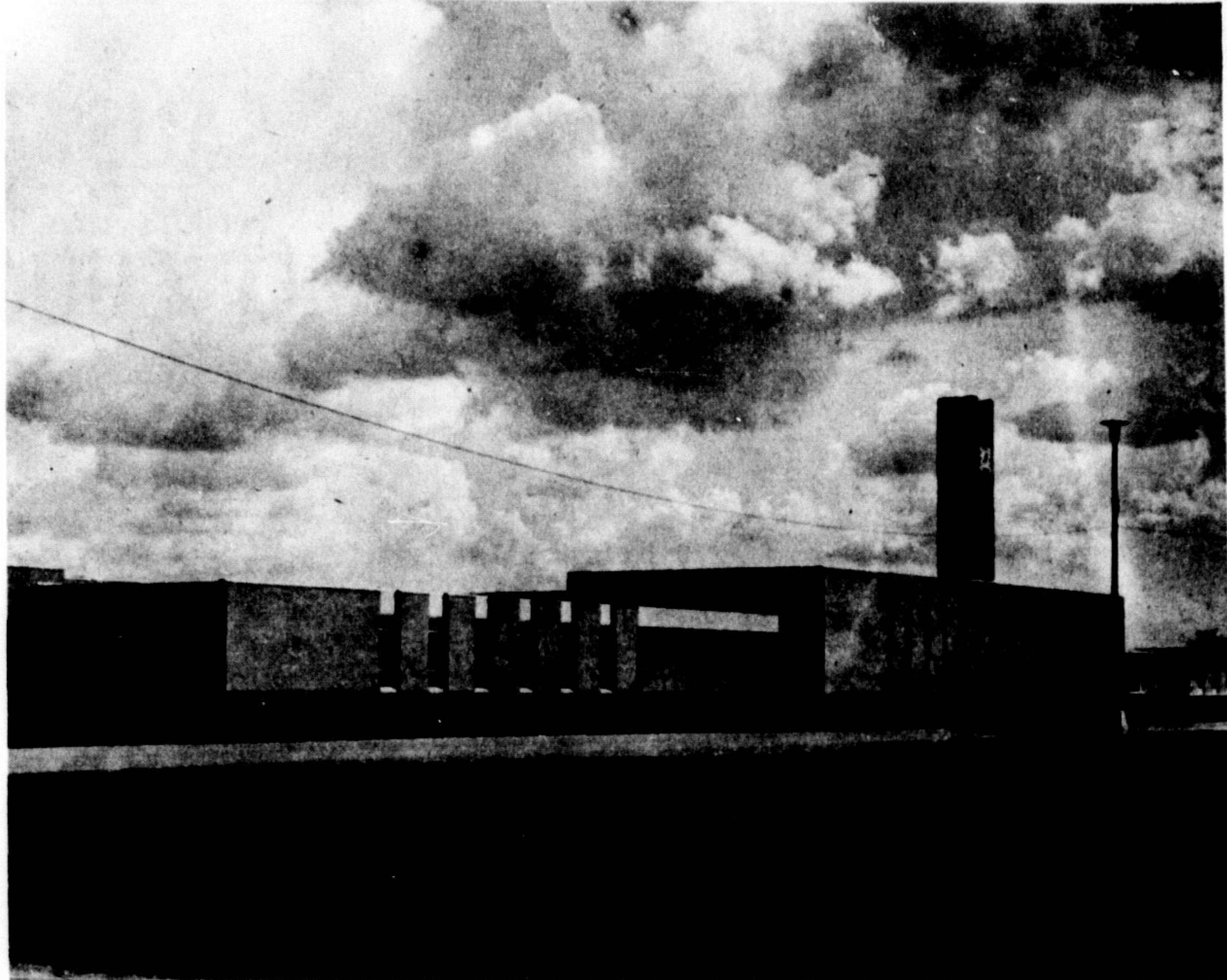




## Week of openings

The week of May 10-13 will be a busy one for Milton and district people interested in official openings. On or about Wednesday, May 10 authorities will officially open the new general purpose room at the Martin St. Senior Public School. Friday, May 12 is the opening date for the senior school addition at Ontario School for the Deaf. And on Saturday afternoon, May 13 the new 30-bed second storey addition is scheduled at Milton District Hospital. The hospital is shown in the top photo O.S.D. in the centre, and the Senior Public School auditorium at the bottom.

(Staff Photos)



## New loader or incinerator considered for land fill site

Action on a recommended purchase of a \$21,400 front end loader for the town's sanitary land fill was delayed a week, following discussion at Milton Council's Monday meeting.

Councillor Brian reviewed discussions on purchase of an incinerator as opposed to burying the municipal garbage, and reported a committee recommendation to purchase the 12 ton machine, continuing to bury the refuse.

He noted an incinerator would cost approximately \$8,000, installation a further \$4,000 to \$6,000 and a front end

loader, of smaller capacity, would still be required for clearing the incinerator.

The committee chairman also cited zoning restrictions on the present site and the inability of the incinerator to obtain Air Pollution Control approval, as reasons for continuing the present method.

Councillor C Johnson recalled discussions with Acton on the possibility of a central location for such an incinerator, to be shared jointly.

Councillor Best suggested such an arrangement would not be accomplished in one year if present negotiations between Acton and Esqueping for a dump site were any indication. He emphasized the trade-in value of the present machine was \$5,565 if action was taken immediately. "We're gambling day by day between the scrap value of this machine and the trade-in", he suggested. He warned that the last adjustment in the tracks had been made.

Councillor Best noted a capital purchase would not affect the current budget. He pointed out a \$25,000 amount had been in the capital budget for the last two years.

At Mayor Child's request, the motion to purchase was not tabled at the meeting.

## Ballast bags were useless

Four 50-lb. plastic bags found in a farm field in Esqueping Township last week, caused a bit of head-scratching around Milton O.P.P. headquarters, when it was learned they were the type used for airplane ballast.

But the problem appears to be solved. The four bags contained a black, tar-like substance and when they cropped up in a farm field, everyone began wondering if a plane had dumped them there. However,

airlines officials said the ballasts were useless because their containers were broken, and suggest someone connected with the owners must have "ditched" them there.

### Pollock and Campbell

Manufacturers of  
HIGH GRADE MEMORIALS  
MEMORIAL ENGRAVING  
62 Water St. North, GALT  
Telephone 621-7580



## Proclamation

DAYLIGHT SAVING TIME  
IN MILTON

Whereas a number of municipalities in the district about Milton are adopting a uniform time for the adoption of Daylight Saving Time, and in order to avoid confusion in travel and business, the Council of the Corporation of Milton has passed a by-law establishing the period for the observance of Daylight Saving Time in Milton, from

SUNDAY, APRIL 30, 1967  
AT 2.00 A.M. TO

SUNDAY, OCTOBER 29, 1967  
AT 2.00 A.M.

Citizens are requested to comply with this by-law and adopt the time from the dates specified.

SYDNEY CHILDS, Mayor

## Costly month 17 accidents

Milton Police report 17 accidents occurred during March, bringing the yearly total to 56. The accidents, seven causing more than \$100 property damage and 10 less than \$100, resulting in \$3,686 damage and one injury.

So far during 1967, there has been \$12,316 property damage in motor vehicle tangles in town.

Leaves of oak trees are as rough as sandpaper.

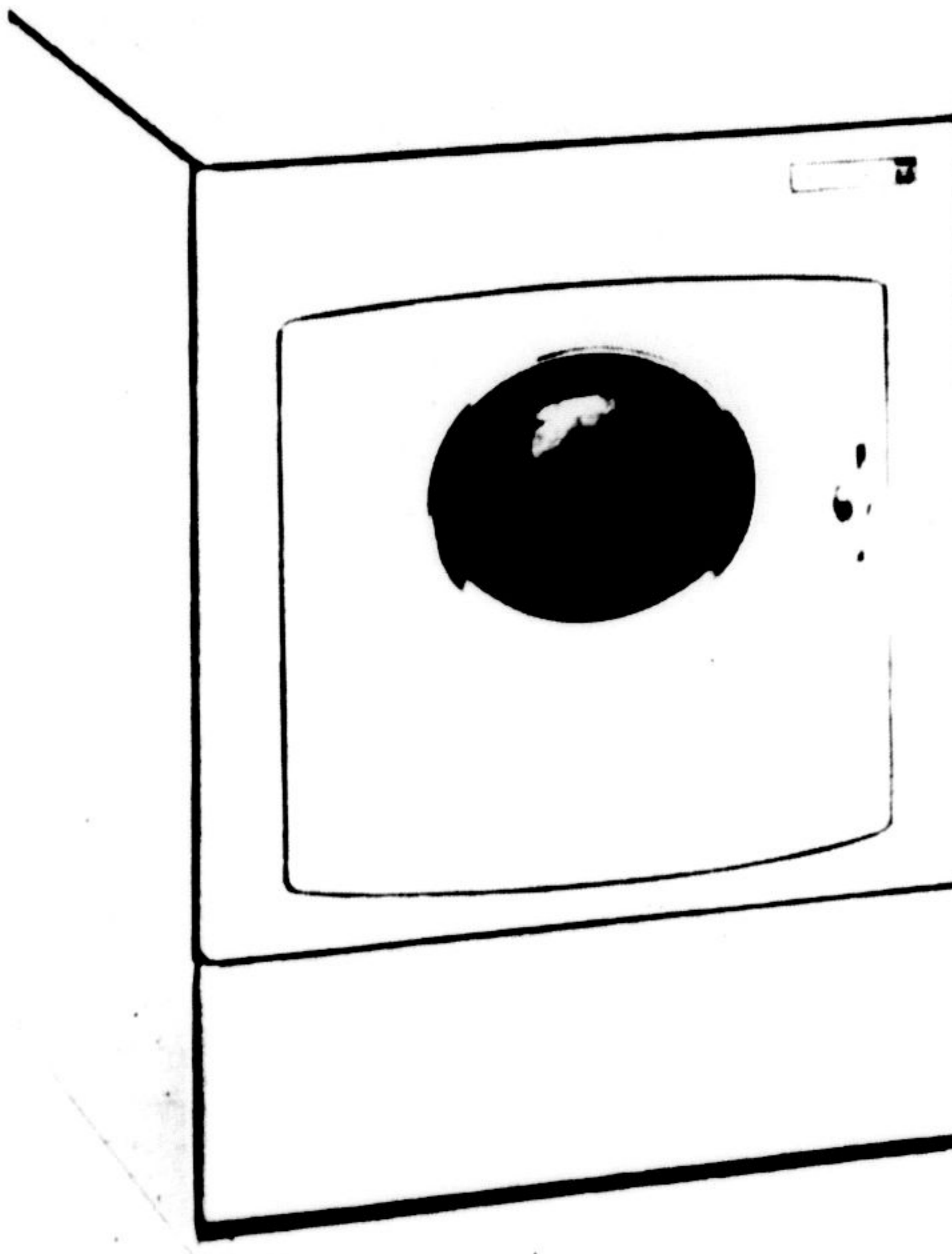
**NADALIN ELECTRIC**  
COMPANY, LTD.  
INDUSTRIAL & COMMERCIAL CONTRACTING  
SUBSTATIONS MOTOR REPAIRS  
24 HOUR  
MAINTENANCE SERVICE  
LOUIS NADALIN  
MILTON  
BOX 808, MILTON, ONT. 878-2206

CAN YOU WASH AND DRY A LOAD OF CLOTHES  
IN JUST 4 MINUTES  
THAT'S ABOUT ALL IT TAKES WITH THE NEW  
**WESTINGHOUSE**  
HEAVY-DUTY LAUNDROMAT AND DRYER!

Mod. LTH350



### HEAVY-DUTY MULTI-SPEED LAUNDROMAT



2 SEPARATE DEEP RINSES  
(WESTINGHOUSE EXCLUSIVE)

LIST PRICE  
\$319.95  
Less Trade  
\$40.00

YOU PAY ONLY **279.95**  
WITH TRADE-IN



USES LESS WATER,  
1/2 LESS DETERGENT  
AND BLEACH



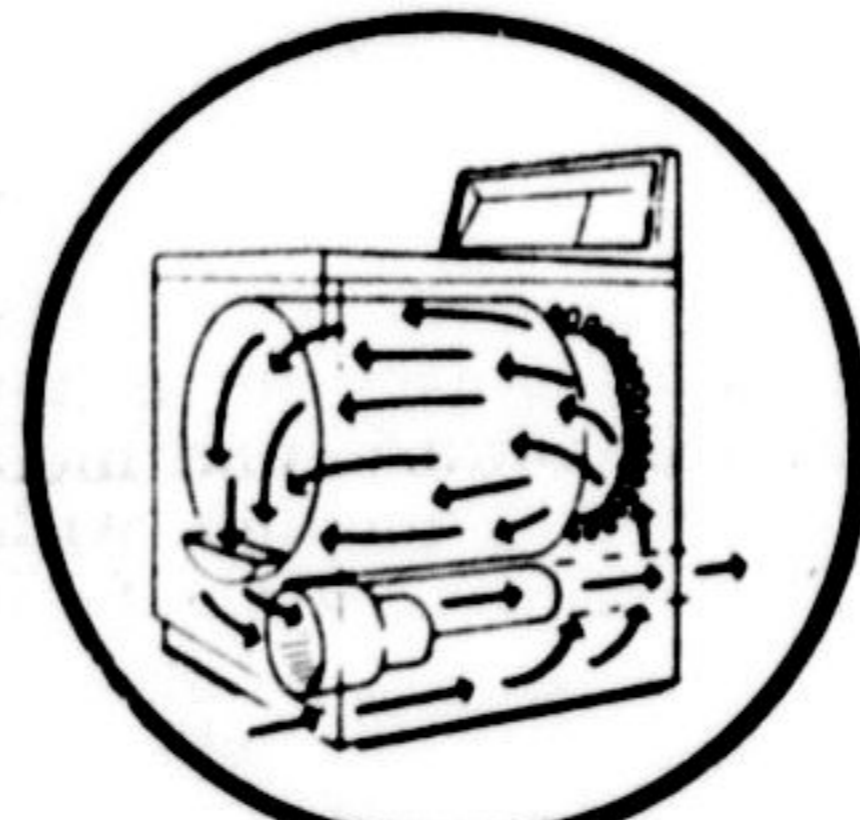
MULTI-SPEED WASHING  
ACTION

Includes Delivery, Hook-up and Free Factory Service

NO MONEY DOWN - LOW MONTHLY TERMS AVAILABLE

### HEAVY-DUTY HIGH-SPEED ELECTRIC DRYER:

Mod. DEH350



BALANCED AIR FLOW  
DRYING

YOU CAN BE SURE . . . .  
IF IT'S WESTINGHOUSE.

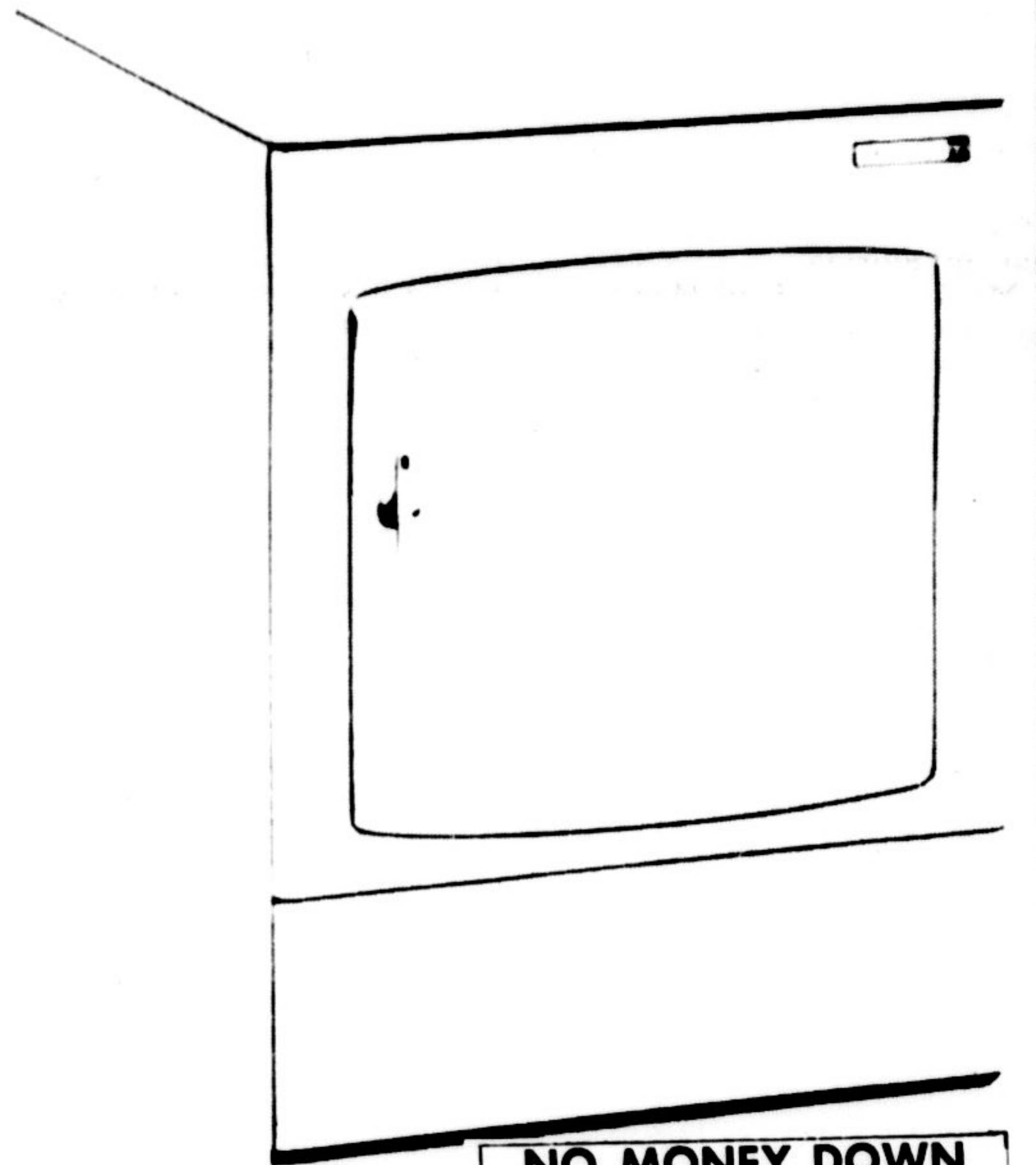


LARGE CAPACITY  
BUILT-IN LINT  
COLLECTOR

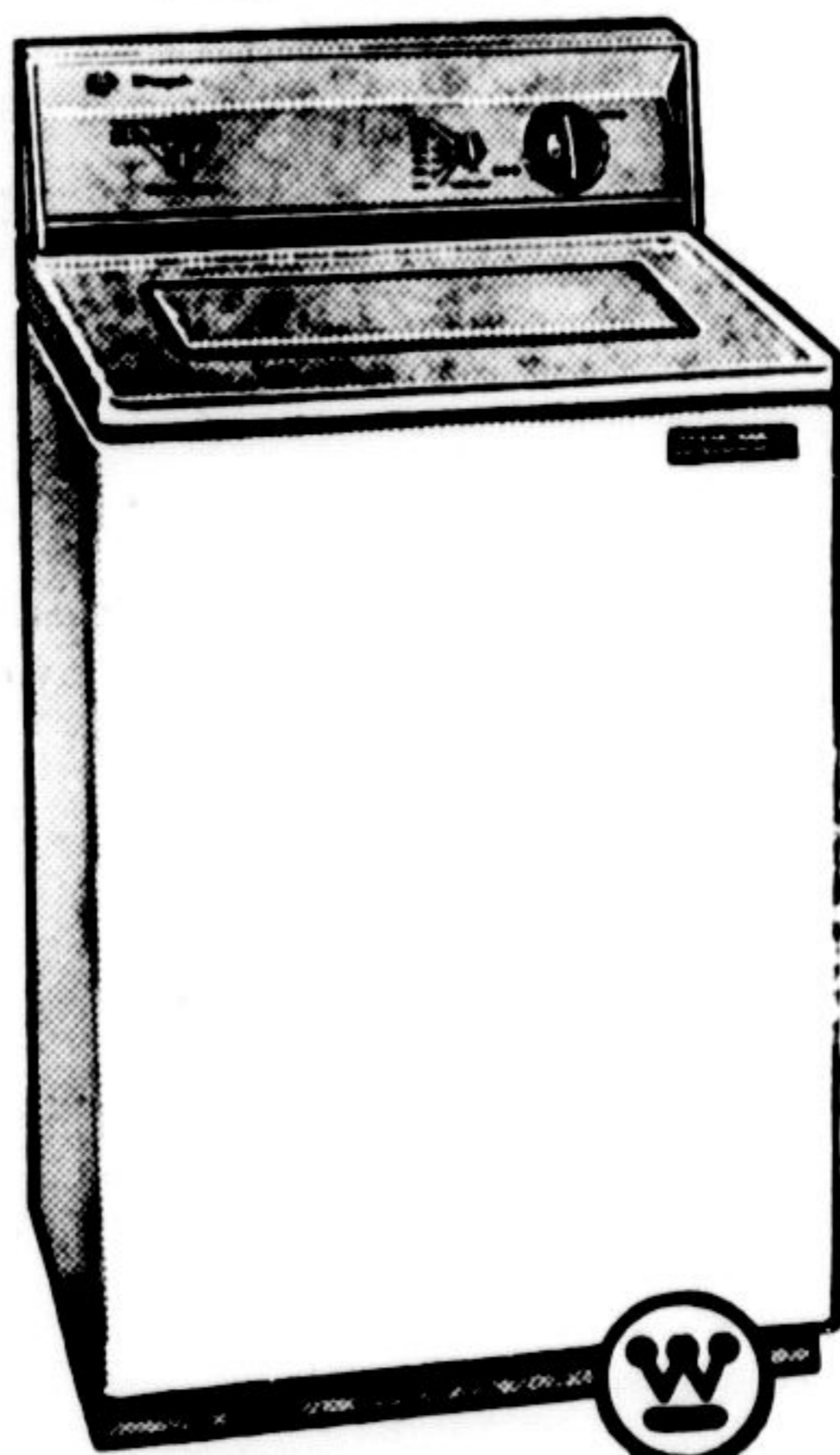
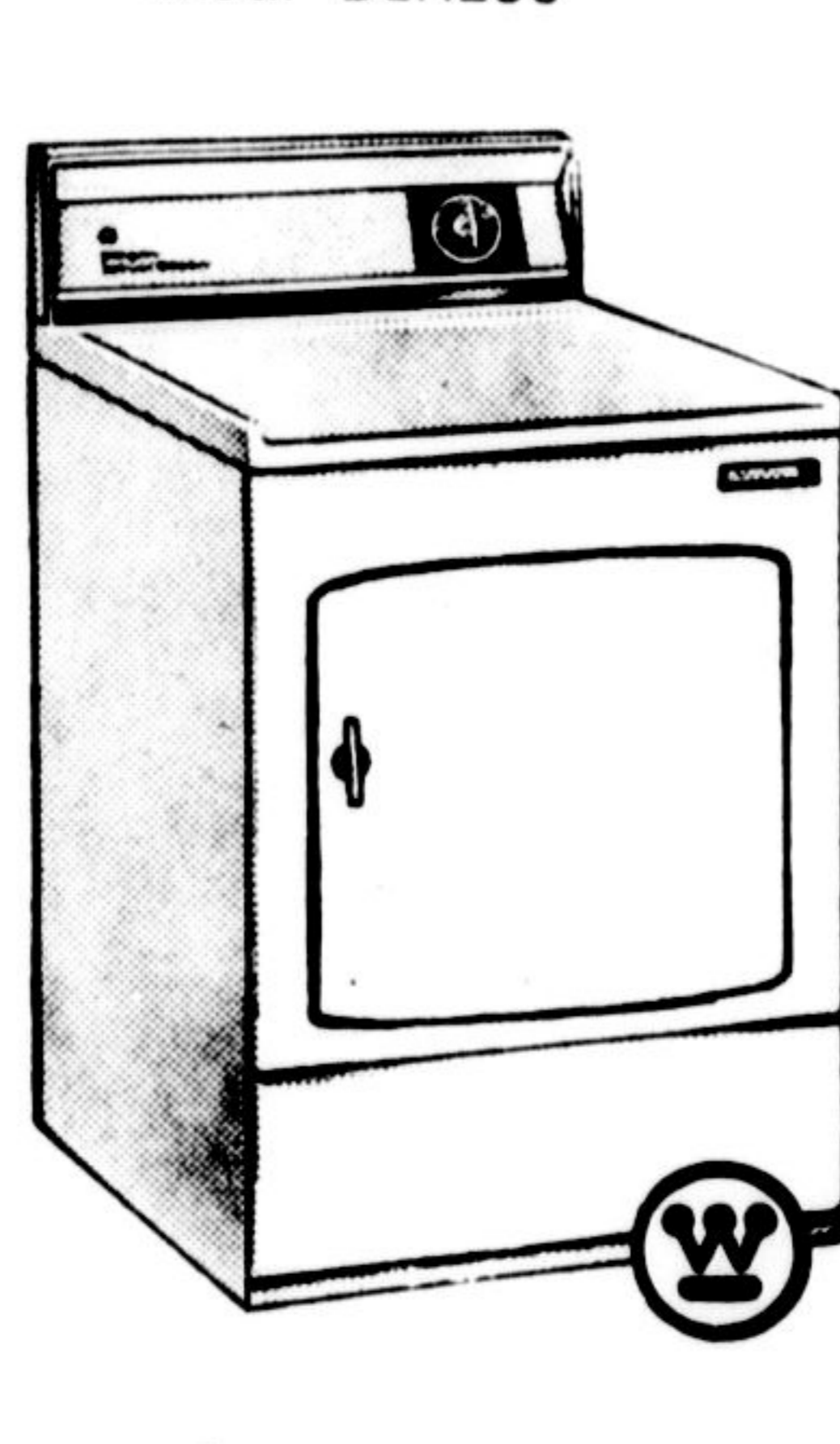
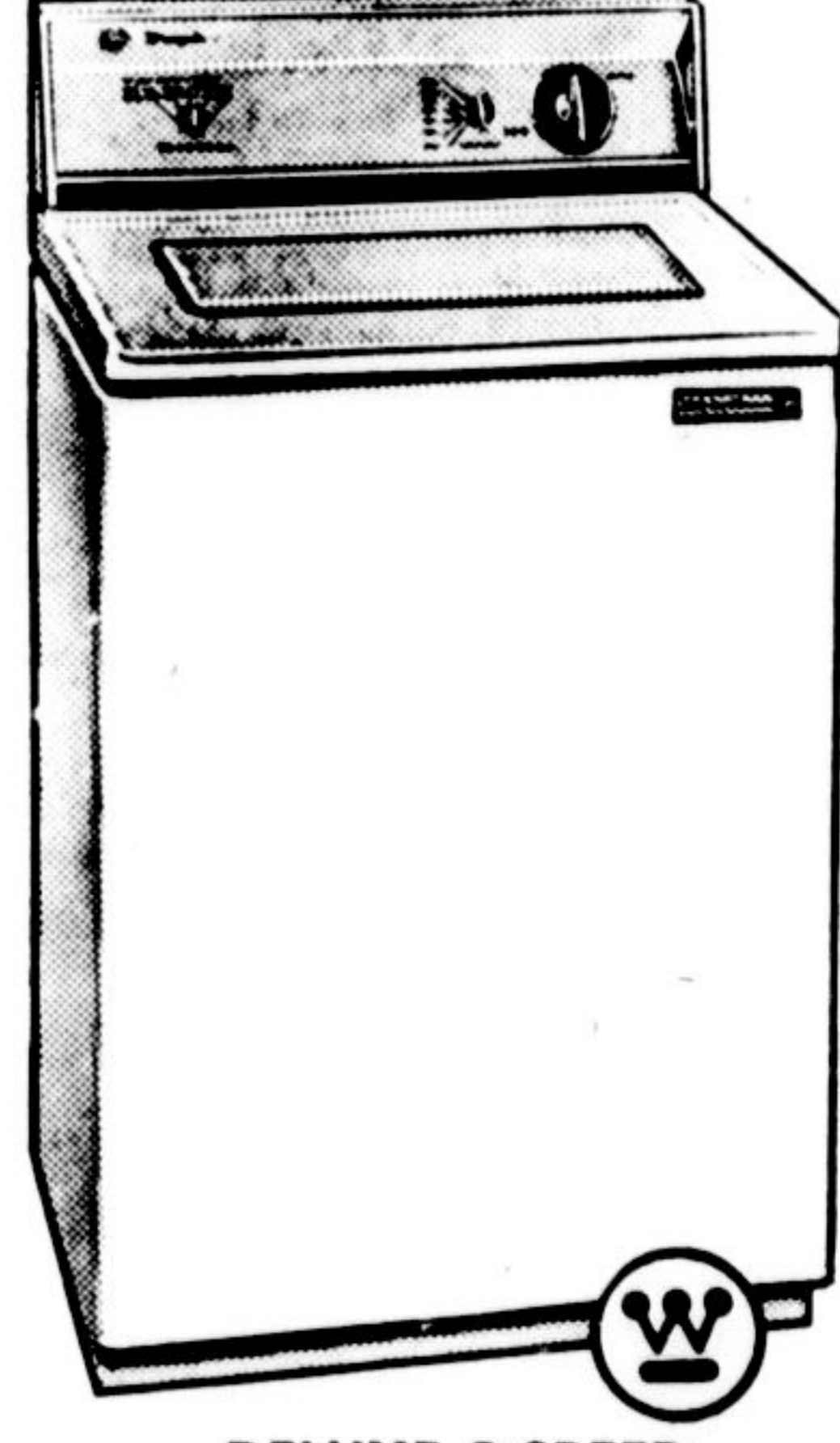
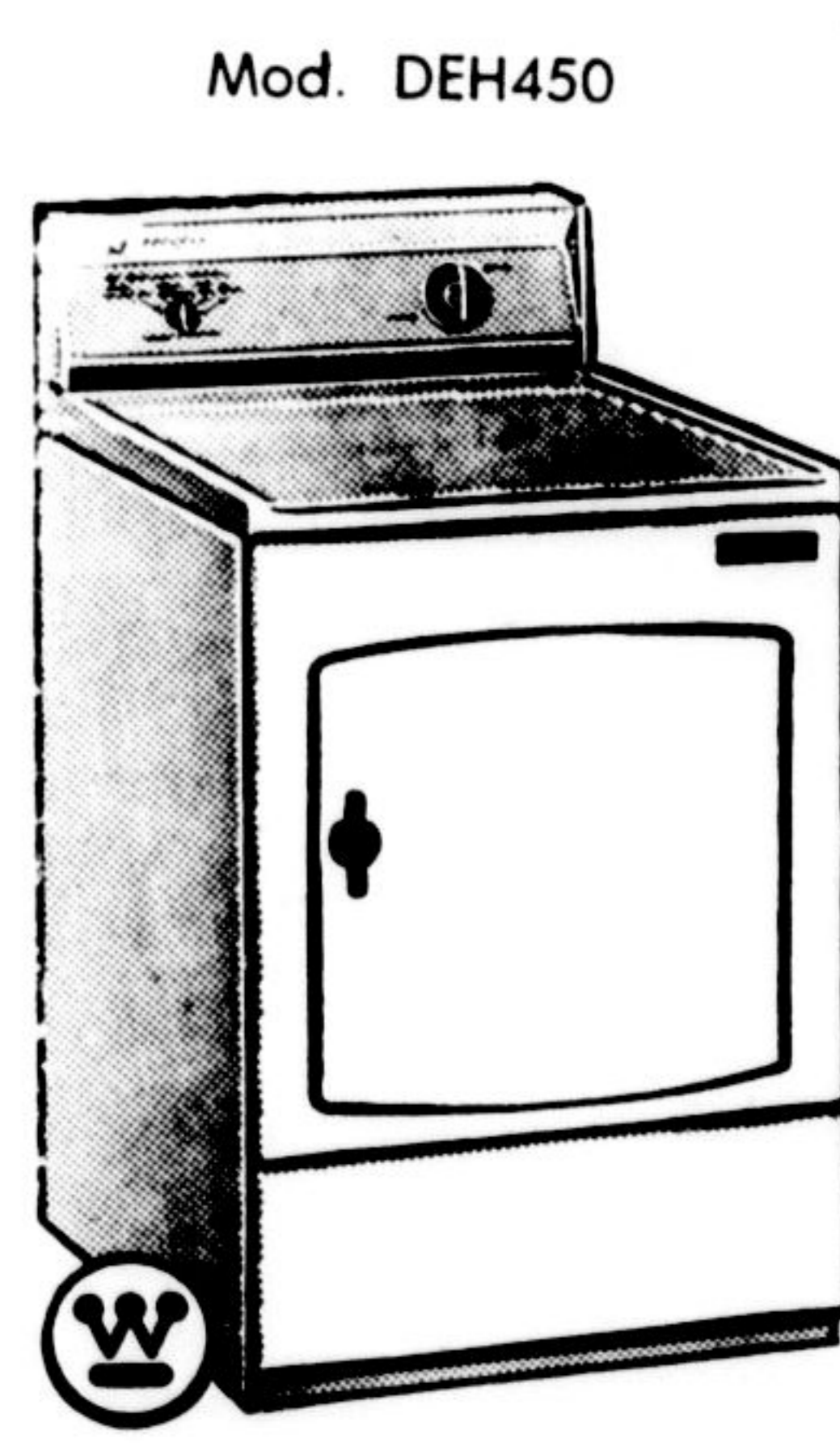
GAS  
MODELS  
ALSO  
AVAILABLE

LIST PRICE \$199.95  
YOU PAY ONLY **179.95**

Includes Delivery, Hook-up and Free Factory Service



NO MONEY DOWN  
LOW MONTHLY TERMS

<p>Mod. LAH250</p>  <p><b>HEAVY DUTY TOP-LOADING LAUNDROMAT</b></p> <ul style="list-style-type: none"> <li>● Huge 15-lb. Tub</li> <li>● Specially designed suspension system will handle even large unbalanced loads.</li> <li>● Heavy duty transmission</li> <li>● Safety lid lock</li> </ul> <p>List Price \$299.95 ONLY <b>259.95</b> With Trade</p>	<p>Mod. DEH250</p>  <p><b>MATCHING HEAVY DUTY DRYER</b></p> <ul style="list-style-type: none"> <li>● Balanced air flow system with 5 minute cool-down period prevent wrinkling.</li> <li>● 2 Temperature selections</li> </ul> <p>List \$169.95 ONLY <b>149.95</b></p>	<p>Mod. LAH450</p>  <p><b>DELUXE 2-SPEED HEAVY DUTY TOP-LOADING LAUNDROMAT</b></p> <ul style="list-style-type: none"> <li>● Huge 15-lb. tub</li> <li>● Regular and gentle wash speeds</li> <li>● Regular and gentle spin speed</li> <li>● Water saver control</li> <li>● 5 temperature selections</li> </ul> <p>List \$379.95 ONLY <b>329.95</b> With Trade</p>	<p>Mod. DEH450</p>  <p><b>DELUXE MATCHING HEAVY DUTY DRYER</b></p> <ul style="list-style-type: none"> <li>● 4 drying programs for all fabrics</li> <li>● Automatic dry setting switches dryer off automatically</li> <li>● Safety door switch</li> </ul> <p>List \$219.95 ONLY <b>199.95</b></p>
--	---	--	---

## CHASE'S HOME APPLIANCES

181 MILL ST.

MILTON

878-3221