



A BATTERY of three linotypes produce the reading material in each issue of the paper. They will continue in this role, although the printed material will be photographed rather than printed directly. George Ware is shown operating.

From LETTERPRESS.



A LUDLOW casts the headlines and larger lines of type in the paper. John Cunningham is shown with the assembled molds preparing to form a line from molten metal.



CASTING from a paper mache type of mold, John MacNabb lifts the solid metal printing plate that is produced. In letterpress this would be inked and printed directly.



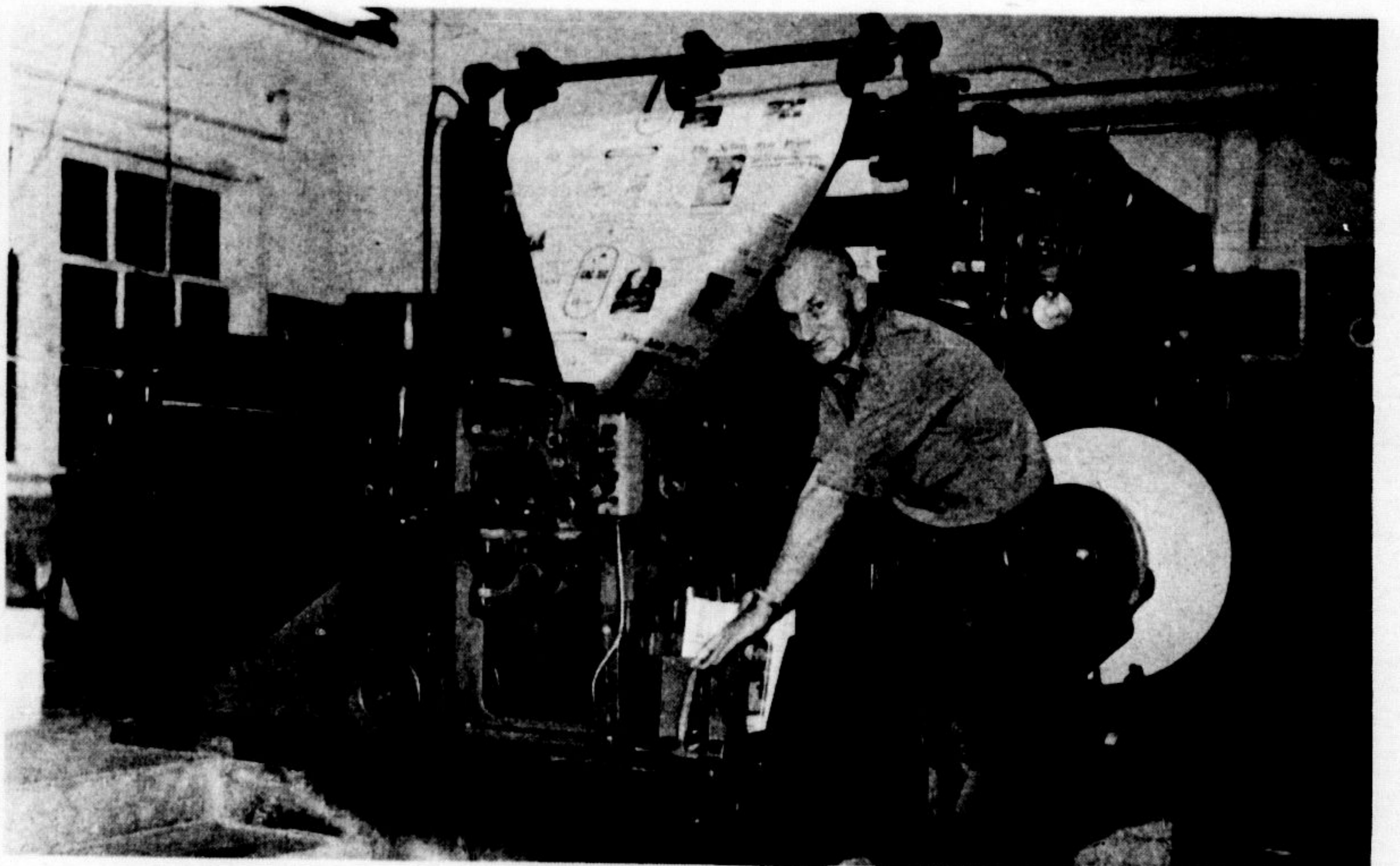
ASSEMBLING the linotype material, the ludlow elements and the solid plates to form a page advertisement are John Cunningham and Art Hawes preparing the page for printing.



PROOFING all the material before printing is necessary to insure the maximum of accuracy.



SPACING a page so the columns are even and solid makes it possible to lift the 100 pound page to a press for printing.



FINAL PRINTING on the 10 year old Goss Cox-o-type press at 3,500 eight page sections an hour is the end of the printing operation. Wilf McEachern is shown removing completely folded papers from the press that prints on both sides of a sheet from a mile long roll of paper. This press completed its last run last week.