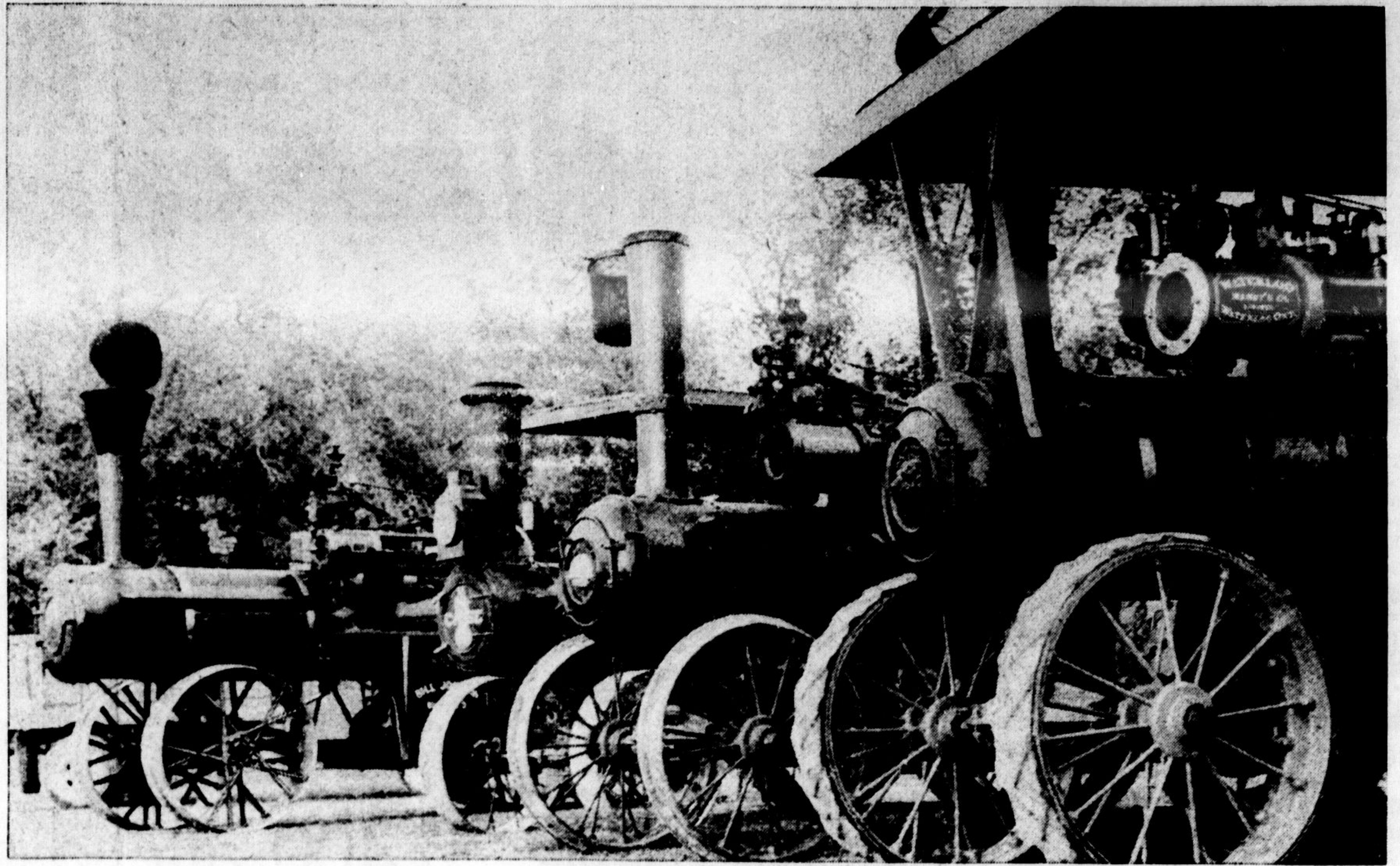
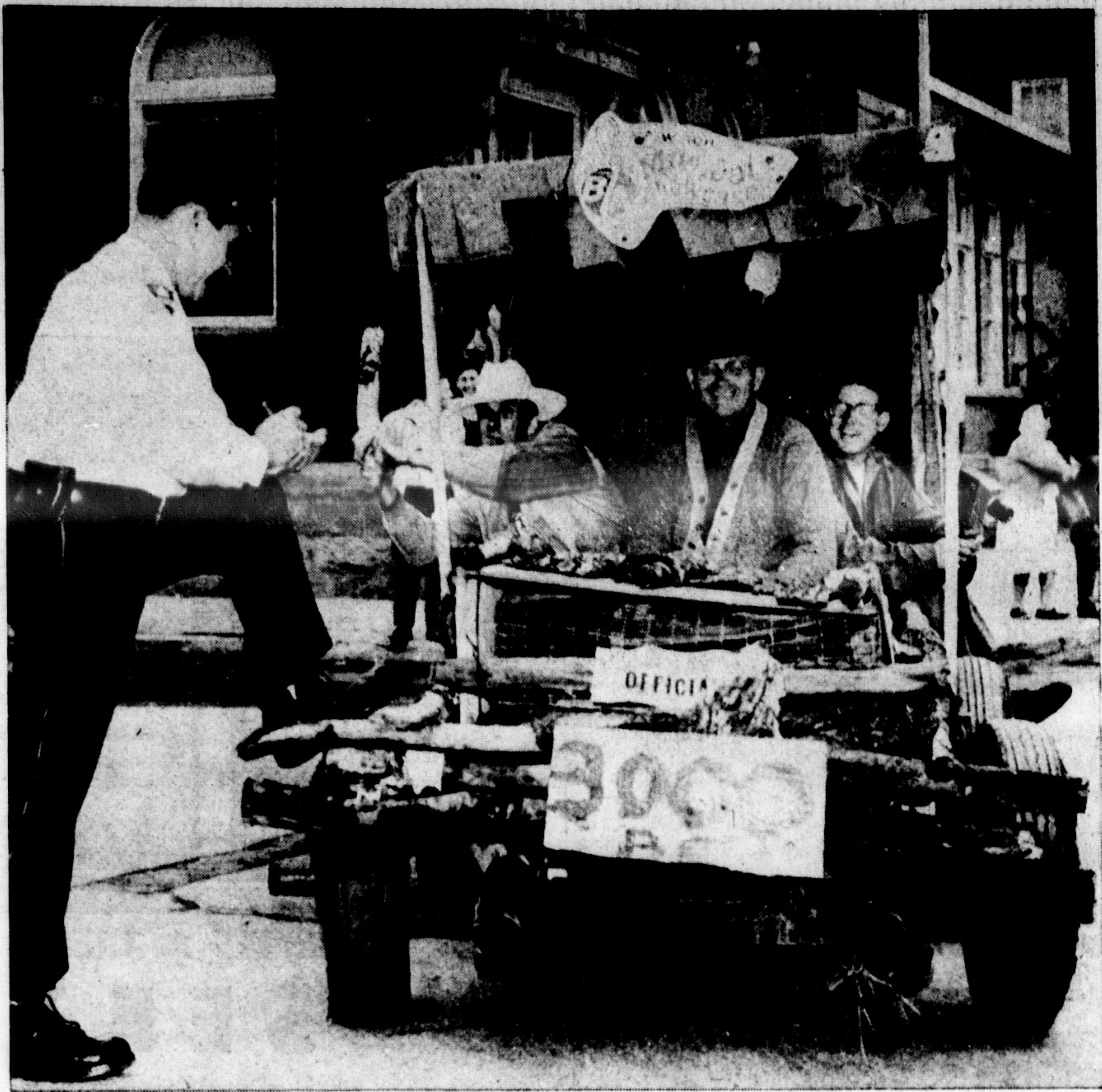


# Steam-Era Pictorial



## Champion



Displaying the variety of power equipment that dominated yesteryear, Steam-Era returned to Milton Fair Grounds on Labor Day weekend for the sixth annual successful show.

Crowds flocked from near and far to witness the re-birth of the steam era, and none were disappointed as the three-day show featured something of interest to everyone, regardless of their age.

On this feature page and elsewhere in this week's Champion,

are representative scenes from Steam-Era that will bring back many happy memories to those who saw the show.

**ABOVE LEFT:** George Schultz of Galt brought along his home-built "Flintstone Special" car which provided plenty of laughs for the crowd watching Saturday's parade through Milton. But Const. Bill Patterson of the local constabulary found the ve-

hicle wasn't slightly up to safety standards (no windshield wipers) and pretended to write out a ticket for George.

**ABOVE RIGHT:** Four of the old steam-powered monsters of yesteryear look serene as they repose at the fair ground. The wood-and-water-gobbling, smoke-belching iron horses put on quite a show for the visitors as they lumbered through the grounds.

**CENTRE LEFT:** Saturday's attendance was down slightly from last year's record-setting figure, due mainly to cool and damp weather, but those who attended enjoyed every minute of it. Here the grandstand crowd watches two steam rollers getting stuck on the slippery race track, while in the background a sawmill and threshing machine are seen at work.

**LOWER LEFT:** Sherwood Hume of Milton stands atop his antique threshing machine while volunteers feed the hungry giant with grain to be separated.

**CENTRE BELOW:** During Saturday's parade, children found a seat wherever possible (like on the hood of this Volkswagen) to watch the old tractors, cars, trucks and steam engines parade past.

**BOTTOM RIGHT:** Three girls dressed in period costumes for Milton's Old Fashioned Days celebration, which led up to the sixth annual Steam-Era, are shown inspecting a double ox yoke at the fair grounds. Arlene Graham, Rachel Andreko, Jill Wallis and thousands of visitors admired relics of farming from long ago displayed at the building.

**CENTRE OF PAGE:** A 1915 Sawyer-Massey steam engine that kept working until 1943 gets a close inspection from Charles G. Ferguson of Lansdale and 10-year-old Michael Pearson.

