

## Hanson - Austin

Pink Gladioli and white carnations decorated Bethel United Church at Drumquin for the wedding on July 23 of Margaret Isabel Austin, daughter of Mr. and Mrs. Charles Austin of R.R. 3 Georgetown, to William John Hanson, son of Mr. and Mrs. William Hanson of Guelph.

Rev. Keith Hawkes of Hornby officiated at the ceremony and Mrs. Graham Reeve of Ashgrove, friend of the bride, was at the organ. Miss Beth Bryan of Belwood sang O Perfect Love and The Wedding Prayer.

The bride, given in marriage by her father, wore a full-length gown of silk taffeta with long lily point sleeves. Rose-point lace studded with pearls graced the bodice and bordered the skirt. A long chapel train embroidered in rose-point lace extended from the waist, and a taffeta flower beaded with pearls held the shoulder-length veil of scalloped nylon tulle. The bride carried a cascade bouquet of pink sensation roses and stephanotis.

Mrs. Gerald Lafontaine of Guelph was matron of honor and Mrs. Ron Plant of Hornby, friend of the bride, Miss Carol MacIntosh of Preston, cousin of the bride and Mrs. Fred Milton of Guelph, sister of the groom, were bridesmaids.

All wore floor length gowns of petal pink chiffon over taffeta graced with variegated rose appliques at the empire waistline. Matching pink arrangements of flowers adorned their hair and they all carried a toptiary of

white pom pom chrysanthemums and pink roses.

Little Sandra Austin of Oshawa, niece of the bride, attended as flower girl in a long dress identical to the bridesmaids and with the same hair arrangement and carried a basket of white pom poms and pink roses.

Master Scott Milton, nephew of the groom was ring bearer for the double ring ceremony.

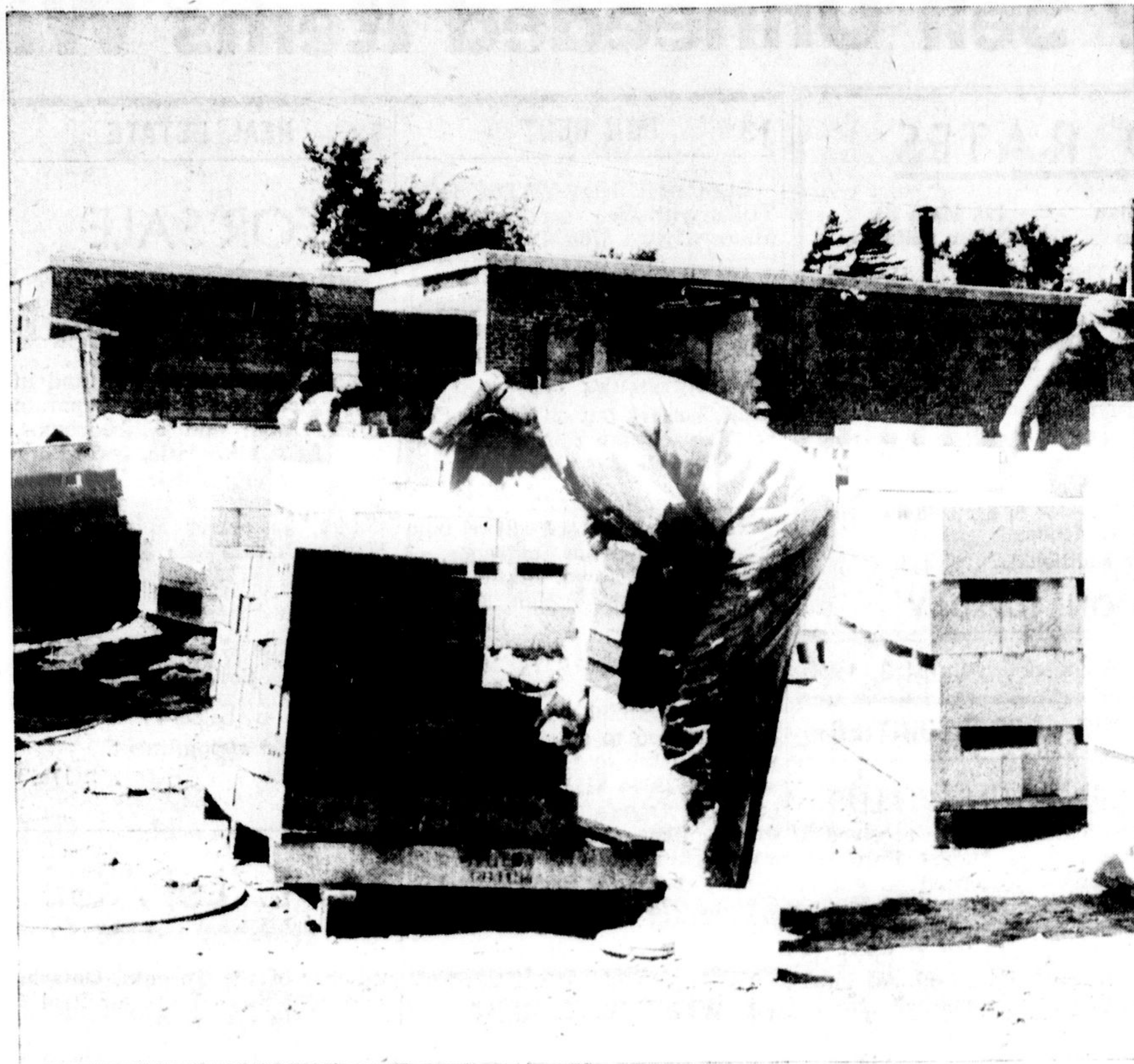
Wallace Hartwick of Guelph was the groom's attendant and the ushers were David Austin, brother of the bride, Gerald Lafontaine and Ron Davies of Guelph.

The reception and dance were held at the Halton Country Club where Mrs. Austin received in a pale blue silk brocade with three-quarter length coat and hat and bag to match. Mrs. Hanson received wearing a blue crepe dress with lace jacket and pink accessories. They both wore corsages of pink carnations.

The bride donned a pink crepe dress with a full length lace coat and matching pink hat and shoes and bag. She wore a corsage of pink sweetheart roses and later the bride and groom left for points east. On their return they will reside at Smith Falls.

An honored guest at the wedding was the bride's grandmother Mrs. William Swanson of Guelph.

Friends were present from Petawawa, Sudbury, Rochester, Oshawa and local points.



—Staff Photo

**AN INDICATION OF GROWTH** in Halton County is the continual necessity for new schools and additions to present ones, such as this five room wing being added to Speyside Public School. The school itself was built only six years ago, but development and termination of the one-

room school system has upped the space requirements already. The addition includes a general-purpose room, the first kindergarten room in Esquesing Township and three classrooms. Cost will be an estimated \$112,000.

## Parent responsible for child in visit to provincial parks

To keep accidents to a minimum on Provincial Parks beaches during the summer months and especially on holiday weekends, safety programs have been strengthened, safety education intensified and safety literature again will be distributed to park visitors.

The Department of Lands and Forests also is again emphasizing that the ultimate responsibility for the safety of children depends on their parents. While parks and beach patrols do everything in their power, parent co-operation is necessary to complete success of the accident prevention program, it is pointed out.

It is thought that the relaxing atmosphere in parks may produce a carefree and careless attitude in many otherwise conscientious parents. Fortunately, traffic moves more slowly in provincial parks, for youngsters may forget the wise advice of parents and teachers to stop and look both ways before

crossing streets, and so may heedlessly run across park roads.

Little tots may approach too close to camp fires. Safe beaches with beach patrol officers de-lude parents into thinking that there is a free baby sitting service. Children, neglected, get into trouble.

Last summer, southern Ontario parks reported 237 lost children. Each of these incidents required a search by Department staff and, while happy results were obtained, every case caused mental anguish to parents.

## Smith's one-hitter paces Flyer victory

Dave Smith fired a nifty one-hitter as the Flyers blanked Lowville 5-0 in Milton Fastball league play.

Stu Dolbel's single in the first inning was the only safety off Smith's offerings. The veteran righthander struck out two and walked two over the seven-inning route.

Pete McDuffe's homer with two on in the fifth was the big blow for the winners. He also contributed a pair of singles. Trevor Houston singled twice, Loris Faggion singled twice and Gord Marshall doubled and singled.

In a recent slugfest, the Flyers edged the Meters 14-13 with a four run splurge in the sixth inning causing most of the damage for the winners. Trevor Houston singled for the winners, Squeak Rigo singled, Stu Han-nant singled twice, Loris Faggion doubled, Bob Krantz singled, Gord Marshall singled twice, Keith Burton singled and Frank Kaszycki singled.

For the losers, Butch Riddell singled, Ducky Simon singled, Keith Fay singled twice, Primo Rigo singled four times, John Jarvis singled, Grant Stark singled, Jim Rowley singled twice and Ted Foster singled.

## Robin Hood Flour Mills Limited

### ANNOUNCEMENT



JOSEPH R. HANSON

Joseph R. Hanson has been appointed General Manager of Supersweet Feeds, a division of Robin Hood Flour Mills Limited. Previously the Director of Credit for the U.S. Supersweet Division, he now succeeds E. A. Thompson who has become Director of the U.S. Supersweet's Allied Operations.

Mr. Hanson brings to his new position a solid background in agriculture and related business. A graduate of Iowa State University in Agricultural Economics, he is an expert in farm management. Before joining Supersweet in 1960, he served 10 years with the U.S. Department of Agriculture in Agricultural Finance, farm appraisal and farm management. For 9 years he managed the Mason City Production Credit Association in Iowa. Mr. Hanson's varied experience also includes several years as owner and operator of a Poultry and Hog farm.

Any way you figure it...  
**THE FINEST WELCOME TO MILTON IS WELCOME WAGON**

A visit from our hostess will make you feel at home, with her basket of gifts and answers to questions about the town, its services and facilities. Just call...



Phone 878-6292

**WELCOME NEWCOMERS!**  
Use this coupon to let us know you're here.

Name .....

Address .....

Town .....

Please have the Welcome Wagon Hostess call on me.

I would like to subscribe to The Milton Champion.

I already subscribe to The Milton Champion.

Fill out coupon and mail to P.O. Box 704, Milton, Ontario.

## 66 hockey enthusiasts enter golf tournament

Sixty-six Milton hockey enthusiasts are slated to get into the golfing swing of things on Sunday as the Milton Merchant Junior Hockey Club sponsors the "Milton Hockey Golf Tournament".

Trophies will be awarded to those with the low net and low gross scores and action is slated to start at 11 a.m. at Horaby Tower Golf Course.

**11.00 a.m.**  
B. Anderson, R. Wildfong, M. Grenke, A. Graham.

**11.07**  
D. Marshall, L. Leaver, J. Smith, Doug Hearn.

**11.14**  
B. Bond, E. Scisizzi, B. McPhail, M. Whistler.

**11.21**  
J. Keane, A. Parton, R. Arnold, A. Skinner.

**11.28**  
C. Brush, H. Ferguson, S. Han-nant, J. Heipel.

**11.35**  
J. Hore, R. Shannon, E. Wildfong, P. Legree.

**11.42**  
L. Stickle, D. Hyatt, T. Foster, D. South.

**11.49**  
A. Forbes, A. Brodie, B. Collins, B. Sales.

**11.56**  
R. Bertoli, P. McMullen, R. Guay, F. Marshiori.

**12.03**  
B. Lee, C. Gervais, Don Hearn, D. Evans.

**12.10**  
S. Gervais, D. Coates, B. Boughton, D. Anderson.

**12.17**  
F. Clarke, D. Aikenhead, M. Boughton, B. Jackson.

**12.24**  
B. Currie, H. Hopkins, M. Caputo, C. Jubb.

**12.31**  
J. Zoppas, G. Stark, G. Wrigglesworth, F. Kaszycki.

**12.38**  
B. Skidgemore, Rod McKersie, K. Thompson, B. Brush.

**12.45**  
J. Hopkins, R. Morris, D. Murdoch.

**12.52**  
A. Strath, L. Appleby, W. Arnold.

—Milton O.P.P. investigated an unusual accident this week at Stewarttown when a dog and a motorcycle collided.



**MR. AND MRS. WILLIAM JOHN HANSON** were married July 23 at Bethel United Church, Drumquin. The bride is the former Margaret Austin, daughter of Mr. and Mrs. Charles Austin of R.R. 3, Georgetown.

## Paper drive gets 12 tons

The July paper drive by Milton Scouts and Cubs was a successful one, in which 12 tons of newsprint were collected from local homes, organizer Joe McCann reported this week.

He expressed thanks to Dave Brush, fathers and friends of the boys who assisted, also to Doherty's Sunoco Service, Trafalgar Motors and Halton Branch United Co-Operatives of Ontario for loaning trucks.

—Holidayers are experiencing rainy weather this week.

### SAME NAME

The letter to the editor about Mill St. parking signs which appeared in last week's Champion was written by Mrs. Edith Sharpe of Pearl St., Milton, not Mrs. Edith Sharpe of R.R. 1 Campbellville. Mrs. Sharpe of Campbellville asked The Champion to clarify the writer's address as she had no connection with the letter, although both ladies' names are the same.

—Members of the German-Canadian Club of Halton County are busy planning two big shows and dances on Friday and Saturday, September 2 and 3 at Milton Arena. Watch next week's paper for details.



**DRIVE IN A SAFE CAR . . . THIS SUMMER**

• Come in Now for Safety's Sake

**DAVE'S B.A. SERVICE**

Milton 878-6741  
Ontario St. at No. 10 Sideroad

Open 7 a.m. to 10 p.m.  
Sunday 9 a.m. to 10 p.m.



Why swelter? Now is the time to comfort-condition your office, home or store.

COOL it with CHRYSLER AIR TEMP

**AIR CONDITIONING**

For as Little as **\$199.95**

COMPLETELY INSTALLED BY

**NADALIN ELECTRIC COMPANY LTD.**

MILTON

878-2206

# CROWE TAXI

## NOW AVAILABLE

PHONE 878-2992

• Sorry if any inconvenience was caused last week on account of illness

# AUGUST CLEARANCE SALE

# SAVE UP TO 50%

## Clearance Of All Summer Wear

• DRESSES • SWIM WEAR  
• SPORTS WEAR, etc., etc.

GOOD CHOICE — BIG SAVINGS

COME EARLY FOR BEST SELECTION -- ALL SALES FINAL

WE MUST MAKE ROOM FOR NEW FALL MERCHANDISE NOW ARRIVING DAILY

See the Lovely Fall Styles That are Here Now.

The *Lori-Anne Shoppe*

IN THE MILTON PLAZA

PHONE 878-9512