



ONE SURE WAY TO GET KILLED or at least seriously disabled is to inspect or work on hydraulically assisted farm equipment without setting props under the raised portions. Murray Harris shows what NOT to do as he works on a swath-

er on his father's farm. Generations of strenuous work can be lost in five minutes' foolishness. July 24 to July 20 is Farm Safety Week and every farmer should set out a safety policy that he will use all year around.

## Marg Hunter Halton's delegate for trip to Winnipeg, Manitoba

A youth travel grant received from the National Centennial Commission through the Canadian Council on 4-H Clubs is making it possible for a number of Ontario 4-H Club members to travel to other parts of Canada this summer.

One outstanding 4-H member from each county and district in southern and north western Ontario has been selected to participate in a trip to Manitoba. These 51 delegates will fly to Winnipeg on July 28th, and will visit and live with host 4-H

families in Southern Manitoba for a week.

Halton County's representative for this Centennial Trip is Margaret Hunter, daughter of Mr. and Mrs. Albert G. Hunter, R.R. 1 Burlington. Marg has recently graduated from the two-year Home Economics Course at Kemptville Agricultural School, and is now employed as a dietitian with the Canadian National Institute for the Blind, in Toronto. In addition to being Halton's 1965 and 1966 Dairy Princess, Marg has completed 17 4-H Agricultural Clubs, and is this year president of the Palermo Junior Institute. She lives on the home farm, with two sisters, Lois and Janet, who are also very active 4-H club members.

On their last evening in Manitoba the Ontario 4-H members will be guests of the Manitoba 4-H Club Council, at a special Jamboree being held at Carman, Manitoba. The 4-H Club members in Southwestern Ontario had the privilege of hosting a similar group of 4-H members from Manitoba last summer.

## 4-H Conservation Clubs tour Grand River area

The 4-H Conservation Clubs from Peel and Halton counties travelled together for their annual Bus Trip, on Monday, July 18. This trip included a tour of the Grand River Conservation Authority properties. The first stop came at Rockwood Conservation area, bordering both sides of the Eramosa River, and located seven miles East of Guelph, on Highway 7.

The Shand Dam and tree nursery were observed at Fergus and members travelled to the Elora Conservation area to swim, eat lunch, and tour the area. This multi-purpose Conservation area is located at the junction of the Irvine and Grand Rivers, just south of the village of Elora, twelve miles north of the City of Guelph. Family camping, nature trails, and approximately four hundred picnic sites are available here.

The last stop was at the Luther Marsh, which is about five miles west of Grand valley, in Wellington County. This area of approximately seven thousand acres, has been flooded to conserve water, and is now a haven for many species of wildlife as well as being a bird sanctuary.

These one-day bus trips are considered very educational for

4-H members who are interested in furthering their knowledge of agriculture and conservation.

### EBENEZER

#### Young People conduct service

On Sunday, July 17, the service of Ebenezer United Church was conducted by the Young Peoples. Three of the Young Peoples, Albert Blom, Walter Blom and Susan Ward, undertook the entire worship service. Albert, president of the Y.P.U., performed the opening of the service with the call to worship and the Invocation; Sue conducted the responsive reading. The Scripture, read by Albert was taken from Genesis Chapter 7.

In place of an anthem by the choir Albert and Sue read a very interesting poem entitled "God's Autograph".

The sermon itself was done by Walter and the subject which he spoke was on "Archaeology's Role in Bible Study" — very interesting topic. The service closed with benediction by Walter and the three-fold amen.

## County 4-H'ers cop trophies

On Wednesday of last week 50 4-H Agricultural Club members from Halton County took part in the Livestock Judging Competition which is held annually at the University of Guelph. Club members had to judge ten classes of livestock, giving reasons on five classes in the afternoon.

Awards night to be held later this fall:

High Novice Judging — C.N.E. Trophy, Donald McClure; Dairy Trophy, Ernie Alexander; Beef Trophy, Bob McGee; Swine Trophy, Marg Brownridge; Champion Livestock Judge Trophy, Larry Bennett.

The following members will receive Trophies at the 4-H

Safety used daily is a sure cure for accidents.

### PRESCRIPTIONS

## ELSLEY'S PHARMACY

24 HOUR PRESCRIPTION SERVICE  
878-4492 — After Hours 878-6961  
FREE DELIVERY — REVLON COSMETICS  
K. H. ELSLEY, B.Sc., Ph.M.



## Champion Farm Page

### Minister praises

## Ontario Farm Safety Week

As part of the effort to reduce farm accidents, the observance of Farm Safety Week, sponsored by the Farm Safety Council of Ontario — July 24 to 30, was commended by the Honorable Wm. A. Stewart, Minister of Agriculture and Food.

"As a result of the Ontario Department of Agriculture and Food's Farm Accident Survey in 1955-60, and the partial surveys undertaken by ten counties during the past three years, it is evident that there are far too many accidents on the farm today," Mr. Stewart pointed out. "Therefore, County and District Farm Safety Councils have been organized to work in co-operation with the Farm Safety Council of Ontario and the Department of Agriculture and Food. Their work is reflected in the re-

duction of the number of accidents and human as well as financial losses. However, this reduction is still not sufficient and we must all endeavor to increase our efforts toward making the farm a safer place to live".

Accident prevention must be

an integral part of the farm management since the costs involved in accidents have a considerable bearing on the health and well-being of the farm family, as well as on income by the savings in property loss.

### DUTCH ELM DISEASE

Dutch Elm Disease was first observed and identified in Holland and northern France in 1919. Ontario had its initial outbreak in 1946.

Dr. S. WAGLE

Is Pleased to Announce

The Opening of

A DENTAL PRACTICE

AT 17 MARTIN ST., MILTON

In the former location of  
Dr. W. C. P. Wright

For Appointment  
PLEASE PHONE 878-2503

L. W. EMMS  
ELECTRIC

Contracting  
and Servicing

Phone Milton 878-9731

## WHAT'S GOING ON

at

## Varcoe's Auto Electric



WATCH  
THIS SPACE

FOR BIG ANNOUNCEMENT

32 Bronte St.

878-3661

### TOPLESS FOR SUMMER

**1963 PLYMOUTH FURY CONVERTIBLE**  
Lic. No. H65893. Finished in Alaska white with blue side trim, V-8, stick power steering and brakes, radio, white wall tires. — Trade or Terms, \$1893

**1963 PONTIAC PARISENE CONVERTIBLE**  
Lic. No. H20165. Finished in Artesian Turquoise with matching interior, V-8, automatic, power brakes, power steering, radio, white wall tires. \$1975

**1962 MERCURY MONTEREY CONVERTIBLE**  
Lic. No. H12972. Finished in Rangoon Red with black interior, V-8, automatic power steering, power brakes, radio, white wall tires. \$1375

TAG YOUR HOLIDAY CAR TODAY AT

## MILTON MOTOR SALES

### PONTIAC

BUICK PHONE 878-2355 ACADIAN MILTON

# U. C. O. CO-OP HALTON BRANCH

MILTON ..... PHONE 878-2391  
GEORGETOWN ..... PHONE 877-2271  
ERIN ..... PHONE 833-2222

### MANAGER'S NOTES . . .

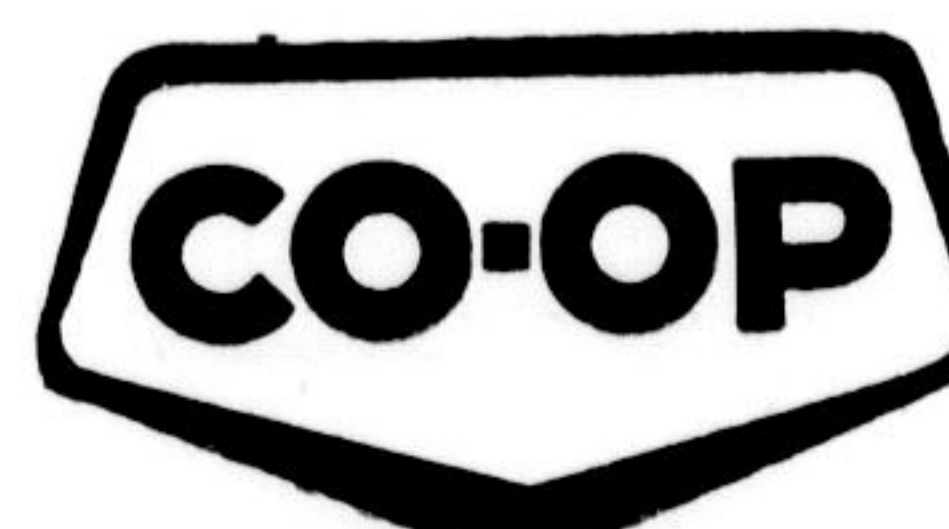
An application now of a nitrogen fertilizer can pay big dividends in hay and pasture growth. The dry weather has cut growth but nitrogen will provide a fast start when the first rain carries it to the roots. Order your supply now.

## FERTILIZE HAY-PASTURE NOW FOR FAST RECOVERY

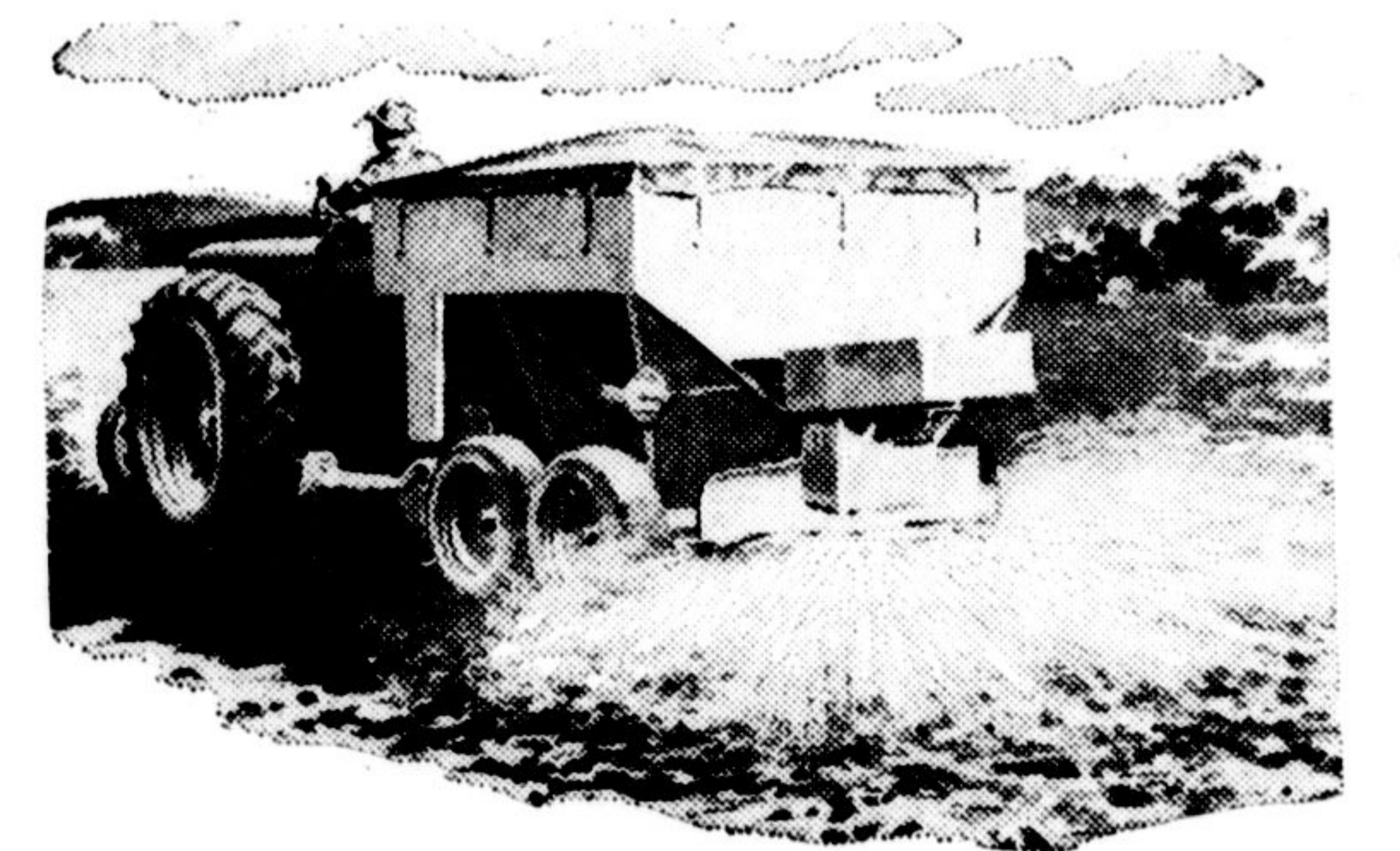
DRY WEATHER HAS REDUCED HAY AND PASTURE GROWTH. AN APPLICATION NOW OF UREA 45% NITROGEN OR AEROPRILLS 33% NITROGEN WILL PROMOTE RAPID GROWTH AT THE FIRST RAIN. DON'T DELAY. FOR MAXIMUM GAIN MAKE THE APPLICATION NOW.

SUGGESTED RATES  
OF APPLICATION

UREAS ..... 80 lb. Per Acre  
AEROPRILLS ..... 100 lb. Per Acre



SERVES  
YOU  
BEST



**PROVEN BEST**  
for side and top dressing



A superior "prilled" fertilizer grade ammonium nitrate for wheat, pastures, corn and other cash crops.

