

## Museum Bd. Christmas Reception Held in Old-Fashioned Setting



—Staff Photo  
THE ANNUAL CHRISTMAS TEAS are being held again this year at Halton County Museum in the Kelso Conservation Area, daily from 2 to 5.30 p.m. until Dec. 23. At a board reception last week, the board's bookkeeper Jan Dennison and Museum secretary Mrs. Erla Brittain served refreshments to visitors Mrs. Blanche Field, Mrs. J. A. Milne and Mrs. John Elliott.

A roaring fire crackled in the stone fireplace. Candles glowed and decorated the tea tables. A Christmas tree in the corner was decorated with paper strips, strung popcorn and hand-made paper bells.

The Christmas tree was surrounded by children's gifts, believed left there by St. Nicholas — including antique dolls, a doll bed, stroller, bike and cradle all close to 100 years old.

Sound like a pioneer Christmas atmosphere? It was.

### Amidst Antiques

The scene was Halton County Museum, a large converted barn on the Duff Alexander homestead at Kelso Conservation Area, Wednesday of last week. While the merriment of the guests, the refreshments and the chatter was mod-

ern, everything else remained antique as museum board members, county councillors, conservation authority officials and other invited guests enjoyed the annual Museum Board Christmas reception in the old-fashioned surroundings of hundreds of museum exhibits.

Guests enjoyed the perfect setting as they took time out from the hustle-bustle of the yule season to relax and reflect on the pioneer days in Halton.

### In Rustic Barn

During the afternoon several of the dignitaries spoke of the year now drawing to a close and praised the Museum Board for its work to date on fashioning a museum for the county in the rustic barn overlooking Glen Eden Lake.

Major Hal J. Newman, Curator, welcomed the guests and introduced Halton Warden Herb Merry of Oakville, former chairman of the Museum Board. Mr. Merry recalled how the barn looked when he and councillors Jack Milne, Archie Service and Will Bird came to inspect it as they were searching for a museum site.

"What was a cowbarn has been turned into a palace of history and a museum of art," he declared. Looking to the future, he suggested that the Museum Board makes as much progress in the next few years as it has in the past four or five. "We will have not one of the best, but THE best museum in Ontario." He suggested that the board members were the most enthusiastic he had ever encountered.

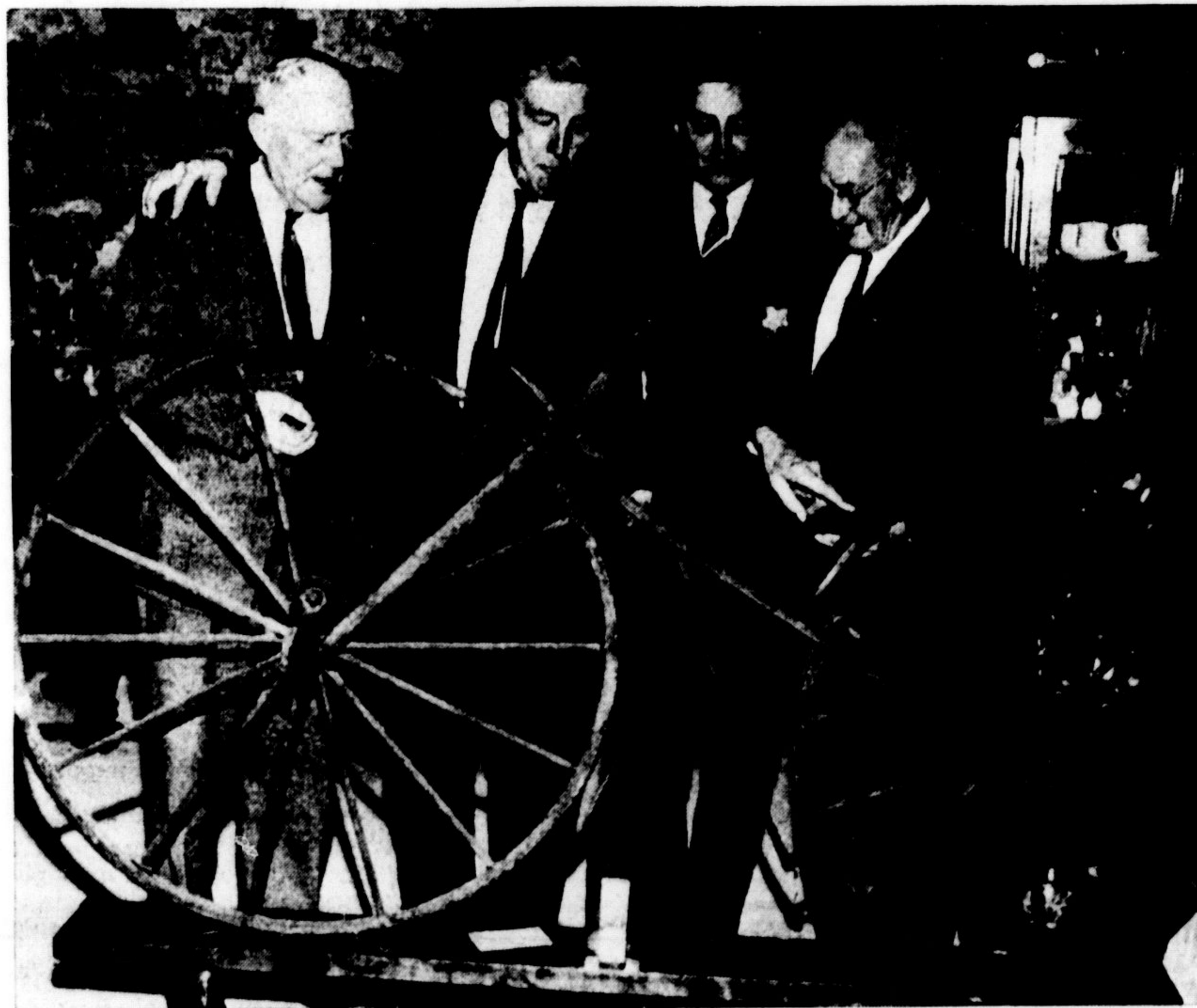
Lester Whiting of Oakville, 1965 Museum Board chairman, said he had hoped the museum would be able to negotiate with the Steam-Era organization for a joint venture at the Kelso site, but the talks were not completed yet. He extended appreciation to all for their co-operation.

The Board presented Christmas gifts to Duff Alexander, fourth generation of Alexanders to live on the farm, and to his cousin Bill Alexander who lives with him.

Until Thursday, Dec. 23, the Museum has been open daily from 2 to 5.30 to serve Christmas teas to visitors.



—Staff Photo  
AN ANTIQUE DOLL COLLECTION, a Christmas tree decorated with home-made ornaments in the style of the pioneers, and other reminders of Halton's past were featured Wednesday when Halton Museum Board held its Christmas reception. Board secretary Jim Andrews, wearing an old-fashioned gent's suit, and his wife Barbara are shown by the tree with the dolls.



—Staff Photo  
ADMIRING A VELOCIPEDE (that's old-fashioned talk for "bicycle") at the Halton Museum at Kelso are Nassagaweya's Museum Board member John Milne, Esquering councillor George Currie, Acton Reeve H. H. Hinton and Esquering board member Ben Case. They were among about 80 officials and guests who gathered there for the Board's annual Christmas reception Wednesday of last week, to enjoy tea and a buffet lunch in the rustic setting of the Museum.



EFFECTIVE MONDAY, JAN. 3

the new location of the

**MILTON MUNICIPAL OFFICES**

WILL BE 14 MARTIN ST.

(formerly occupied by Milton Pharmacy)



### A PRAYER AT CHRISTMAS

"Give us, Lord, a bit o'sun,  
A bit o'work and a bit o'fun,  
Give us in all the struggle and sputter  
Our daily bread and a bit o'butter;  
Give us health, our keep to make,  
An'a bit to spare for others' sake;  
Give us, too, a bit of song  
And a tale and a book to help us along.  
Give us, Lord, a chance to be  
Our goodly best, brave wise and free,  
Our goodly best for ourself, and others,  
Till all men learn to live as brothers."

An Old English Prayer

MAY YOUR CHRISTMAS BE JOYFUL  
AND THE NEW YEAR PROSPEROUS

**Coulter Bros.**

LUCKY DOLLAR MARKET

CAMPBELLVILLE

### MY THANKS --

AND APPRECIATION TO ALL WHO VOTED AND WORKED FOR MY ELECTION AS SCHOOL TRUSTEE WARD 1, OAKVILLE.

THE COMPLIMENTS OF THE SEASON TO EVERYONE

Sincerely,

DENZIL LAWRENCE

### Serve Your Guests with

*Holiday Eggnog*



THE FESTIVE FAMILY TREAT  
FOR THE HOLIDAY SEASON

Sprinkle it with nutmeg . . . serve in party glasses. Family and friends will enjoy this delicious dairy drink. Order a few quarts now for holiday entertaining

ORDER FROM YOUR ROUTE SALESMAN  
OR CALL 878-9971

THE

**MILTON DAIRY**

16 MARTIN ST.



—Staff Photo  
HALTON COUNTY MUSEUM BOARD staged its annual Christmas reception for board members, county councillors, Halton Region Conservation Authority members and other guests in the museum Wednesday afternoon and evening of last week. Guests sipped tea and modern "vittles" in a pioneer atmosphere, surrounded by antique reminders of the county's past. Mrs. P. W. Cooke is shown pouring tea for H.R.C.A. Chairman Ralph Sherwood and Museum Board chairman Lester Whiting, while Museum Curator H. J. Newman looks on at right.

### HALTON CO-OPERATIVE MEDICAL CARE PLAN

PAYS

- ★ All Surgical Operations
- ★ Doctors' Calls Paid from First Visit
- ★ Confinements
- ★ Anaesthetists' Services
- ★ X-rays
- ★ Also Major Medical

Individual or Employee Groups may enroll at any time of the year.

REVISED RATES  
Monthly — \$5.75 Single  
Monthly — \$11.50 Couple  
Monthly — \$13.25 Family  
Payable Quarterly or Yearly

HALTON CO-OP MEDICAL SERVICES  
143 Main Street  
Box 474, Milton — Dial 878-9712

Please send me information. (No obligation.)  
Name ..... Address .....

### NOVEL IDEA

Novelty shops and notion counters are brimming with possibilities for making very attractive presents. Small apothecary jars enamelled in gay colors make ideal spice sets that will add to the decor of the kitchen. When the enamel is dry, label each jar in huge easy-to-read letters of a contrasting color. Such an attractive gift will surely please the culinary expert on your list.

To all my neighbors and friends I wish a MERRY CHRISTMAS and HAPPY NEW YEAR  
**BERT RAINEY**