

Nassagaweya Chooses 1966 Council Saturday

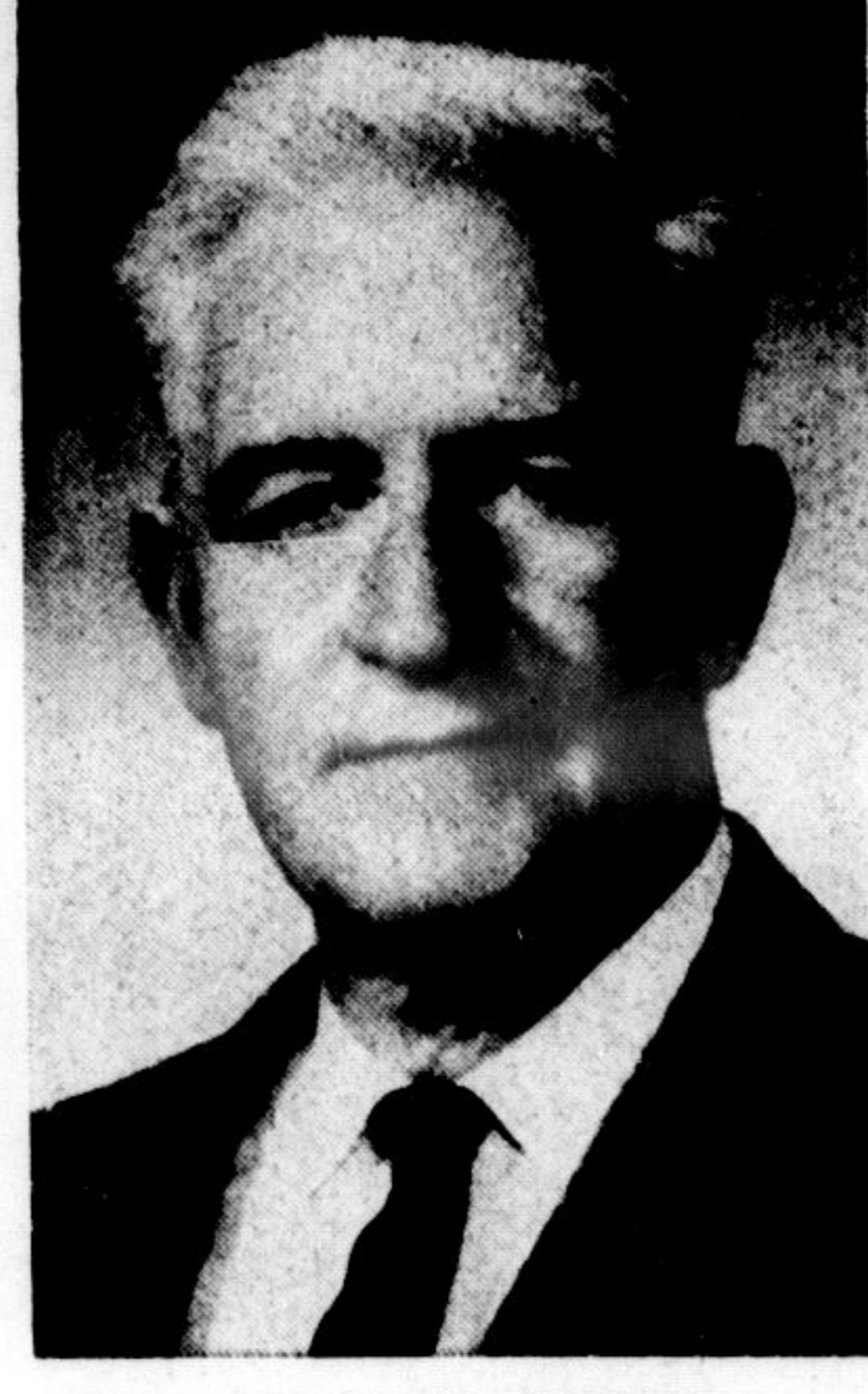
Race for Nassagaweya Reeveship



ALLAN ACKMAN



WILLIAM COULTER



W. A. N. HOEY



DR. B. D. YOUNG

Two Seek Deputy-Reeve's Seat

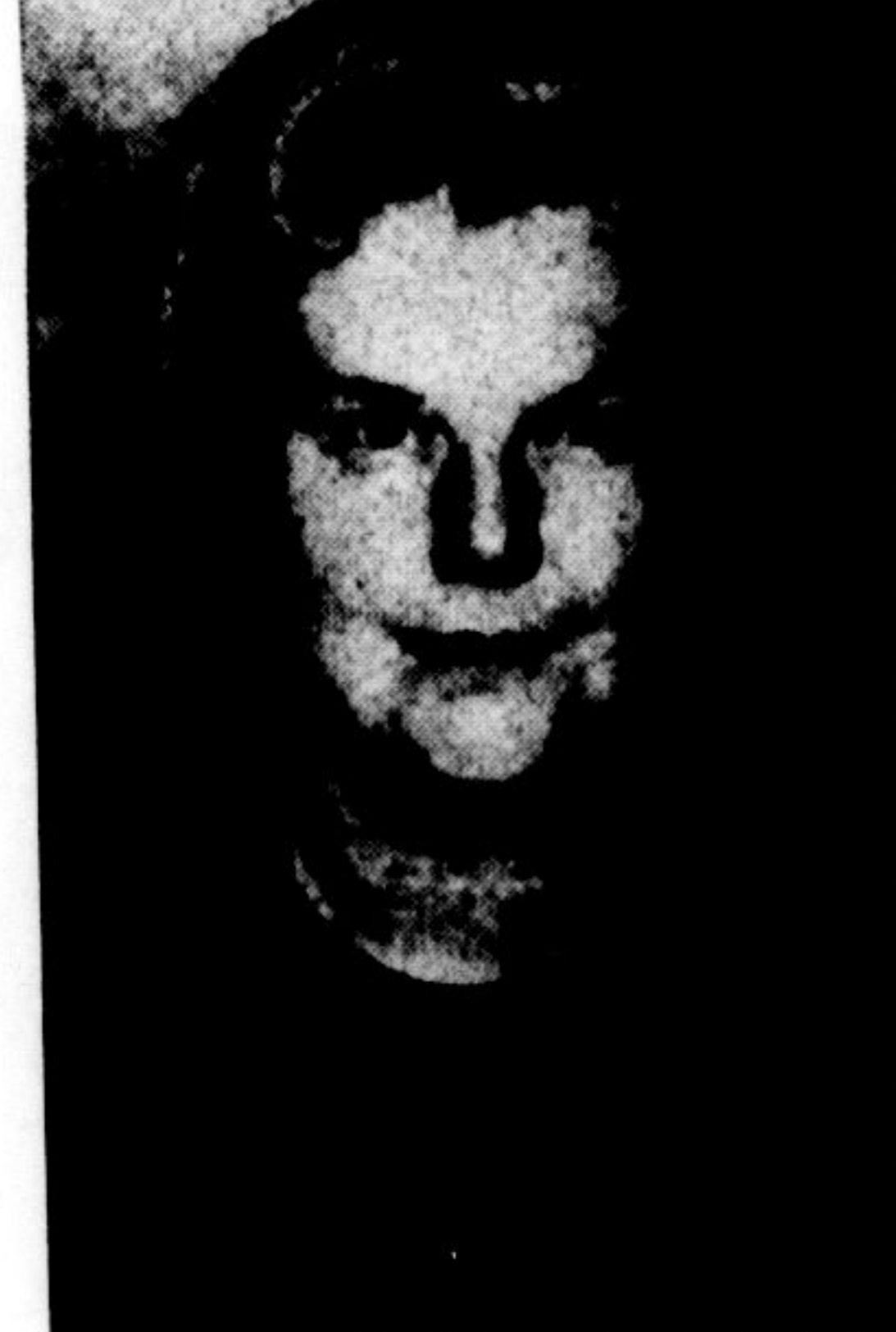
Six Candidates for Nassagaweya's Three Council Seats



LEONARD CHANDLER



ROSS GORDON



MRS. A. MacARTHUR



WILLIAM MAHON



MAURICE NEWTON

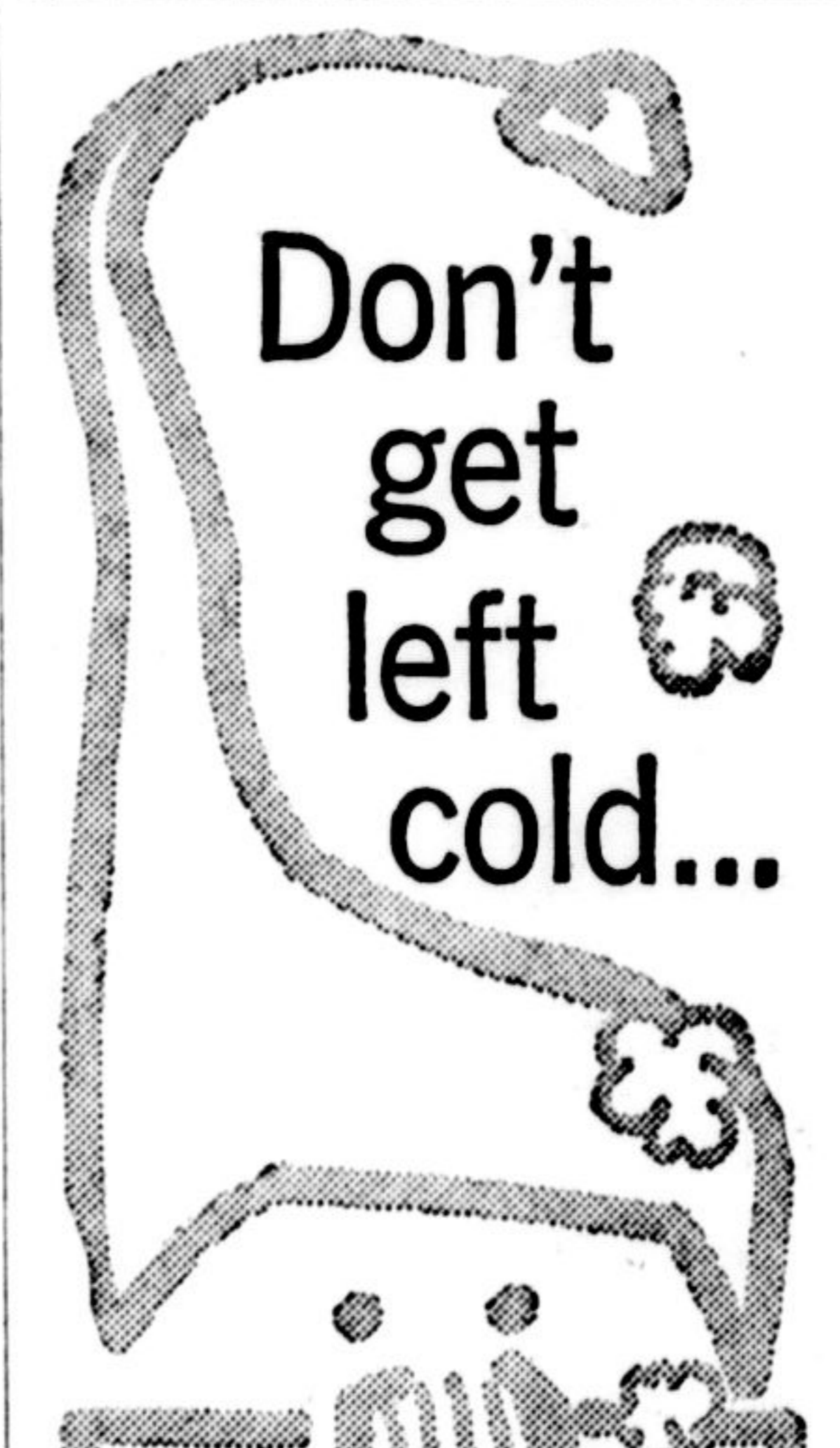


ALAN PARSONS



SCHOOL BOARD TRUSTEES for the Public School Area for the Township School Area of Nassagaweya, were acclaimed to office for a two-year term on Monday evening. Shown from left to right are John McPhail, Claude Inglis and Horace Blyth.

SCHOOLBOY HOWLERS
The king's minister died of a bad attack of argue.
We now use eccentricity for lighting our homes.
A parable is a heavenly story with no earthly meaning.



get **CO-OP** Free Home Heat Service

The complete plan that gives you not only free annual inspection and conditioning and free 24-hour emergency service... but also automatic metered deliveries of the finest fuel oil obtainable.
HALTON CO-OP
Milton Erin
878-2391 833-2222
Georgetown 877-2271
*Registered Trade Mark

THIS SUNDAY
for your shopping convenience
MILTON PHARMACY
246 MAIN ST. 878-2343

will be open from 1 p.m. to 5 p.m.
for drugs, prescriptions, and sundries.

Halton Election Round-Up

Nassagaweya

Nassagaweya Township electors go to the polls on Saturday to select a reeve, deputy-reeve and three council members, and again this year, interest is at a peak. Ten Township ratepayers are seeking the five positions and for the second year in a row, a woman is in the running for a council seat. The slate of candidates for the election is as follows, with the names of incumbents marked by asterisks (*).

FOR REEVE (1 to be elected)—William (Bill) Coulter*, Allan Ackman.

FOR DEPUTY-REEVE (1 to be elected)—Dr. B. D. Young*, W. A. N. (Bill) Hoey.

FOR COUNCIL (3 to be elected)—Ross Gordon*, William Mahon*, Alan Parsons*, Mrs. Anne MacArthur, Maurice Newton, Leonard Chandler.

At the township's nomination meeting last week, three members of the Public School Board for the Township School Area of Nassagaweya were acclaimed to their seats for a two year term. They were Horace Blyth, Claude Inglis and Jack McPhail. Polls are open, 9 a.m. to 6 p.m., Saturday, at the following places:

For Polling Subdivision No. 1—Lots No. 1 to 10 inclusive, in Concessions 1, 2, 3, Polling location, Masonic Hall, Campbellville, Ont. Charles King, D.R.O.

For Polling Subdivision No. 2—Lots No. 1 to 10 inclusive, in Concessions 4, 5, 6, 7, Polling location, Masonic Hall, Campbellville, Ont. Roy Wood, D.R.O.

For Polling Subdivision No. 3—Lots 11 to 21 inclusive across the whole township. Polling location, Brookville Hall. T. Kennedy, D.R.O.

For Polling Subdivision No. 4—Lots 22 to 28 inclusive and Lots 30, 31, 32, Concessions 5, 6, 7 and Lots 30, 31, 32, East Half Concession 4. Polling location, residence of Duncan Moffat. Art Diamond, D.R.O.

For Polling Subdivision No. 5—Lots 22 to 28 inclusive and Lots 30, 31, 32, in Concessions 1, 2 and 3, and the West Half of Concession 4. Polling location, residence of Hugh MacPherson, Mrs. Helen MacPherson, D.R.O.

Oakville

chance to vote for is as follows. Names of incumbent candidates are marked with an asterisk (*).

FOR MAYOR — (one to be elected) Milton district will be casting ballots for mayor, reeve, deputy-reeve, two seats on ward 1 council, two seats on the Oakville Board of Education as well as for four seats on the Oakville Public Utilities Commission.

The line-up of candidates that Ward 1 ratepayers will have a elected) Allan M. Masson*, MacLean Anderson.

FOR REEVE — (one to be elected) Herbert Merry*, Joseph Willmott.

FOR DEPUTY-REEVE — (one to be elected) Lester Whiting*, Alan Day.

FOR WARD 1 COUNCIL — (two to be elected) Fred J. Near*, Geoffrey Drew-Brook, Don Gordon, Len Buckler.

BOARD OF EDUCATION, WARD 1 — (two to be elected) Denzil Lawrence*, L. Douglas Wood*, Mrs. Edith Harrington.

PUBLIC UTILITIES COMMISSION — (four to be elected) H. B. Lofquist*, Phillip J. Blundy*, Arthur Green*, Cameron Hillmer*, Ron Wells, D. S. Morrison, W. A. Stoddart, Raie T. Hill.

(Continued on Page B8)

WREATHS



- Christmas Cone
- Flowered
- Holly
- Memorial
- Perma View Cemetery

WREATHS
FOR BEST SELECTION
ORDER NOW
878-9501

BOB AND NORMA BROWN
MILTON GREENHOUSES
MAIN ST. N. MILTON



Get it at Hazel's
TOYS - GAMES
A Lovely Assortment of Novelties for the Home

CHRISTMAS WRAPPED BOXED CHOCOLATES

CAMERA FILM

SMOKERS SUPPLIES

COSMETICS

OPEN EVERY EVENING AND ALL DAY SUNDAY

COFFEE BAR

Neilson's Famous ICE CREAM

AT **Hazel's Variety Store**
MRS. HAZEL BRUSH
192 MAIN ST., MILTON

VOTE THE UNITED WAY ELECT

MAURICE X NEWTON

FOR NASSAGAWEYA COUNCIL
SATURDAY, DECEMBER 11th - 1965
Polls Open 9 a.m. to 6 p.m.

THANK YOU!

WE WISH TO EXPRESS OUR SINCERE THANKS TO ALL WHO ASSISTED IN ANY WAY IN BRINGING SANTA TO MILTON BY HELICOPTER SATURDAY DECEMBER 4th.

The Town of Milton, The Lions Club, Milton Industry and Merchants Who Gave So Freely of Their Time and Money are to be Congratulated for Their Wonderful Support.

Your Help is Appreciated by
THE RETAIL DIVISION
of the
MILTON CHAMBER OF COMMERCE

We Regret Any Inconvenience That May Have Developed In Our Initial Attempt to Bring Santa to Milton and District Children.

The Gift that Goes Places...

A NEW CAR

FROM ALLAN CLEMENTS & SON

1966 AMBASSADOR 990 4-DOOR SEDAN

COME IN AND SEE WHY THE NEW RAMBLERS ARE SO POPULAR IN MILTON . . .

Test Drive One Today

AND . . . Because we have sold so many new Ramblers we have a large and choice selection of all make and model used cars. Check for the best buy here.

ALLAN CLEMENTS & SON
YOUR RAMBLER DEALER
BRONTE ST. NEAR THE HOSPITAL 878-3441