



—Ontario Hydro Photo

INSPECT OLD DYNAMO: These two pretty staff members of Milton Hydro, dressed in costumes of the 1880's for the recent Milton Steam Era Show, look at an 80 year old dynamo donated to Ontario Hydro's Museum collection. On the left is Mrs. Helen Menefy and at right is Mrs. Mary Emmerson. Second left is T. E. Dietrich, Hydro's Museum Co-ordinator, and second right is Murray S. Kernighan, President of Beacon Chemicals Limited of Milton, who donated the old D.C. generator to the museum.

For Hydro Museum

Chemical Firm President Donates Old Generator

An old D.C. generator, believed to have been made in the late 1880's is one of the latest prize electrical items donated to Ontario Hydro's growing museum collection.

The most recent donation came from Milton. It was the result of an alert company president, who is a professional engineer, having read in the press about Hydro's program of collecting and refurbishing old electrical equipment and appliances for a proposed Museum of Electrical Progress.

Murray S. Kernighan, B.A.Sc., M.C.I.C., P. Eng., president of Beacon chemicals, Margaret St., Milton, had the ancient generator in his plant. He was intrigued by the Commission's program to preserve electrical equipment that otherwise likely would be lost or destroyed and could visualize the advantages of an electrical museum for historical and educational purposes. Mr. Kernighan wrote Ontario Hydro as follows:

Made in Chicago
"Some years ago we 'inherited' an old D.C. generator, which we are not using, and we wonder if it might be of any interest to you — the name plate describes it as 'The Gaylord Dynamo, manufactured by Charles H. Gaylord, Chicago, Illinois.' The rating is 200 amps, 6 volts and 1250 R.P.M. Hydro Museum Co-ordinator T. E. Dietrich contacted Milton Hy-

dro Manager O. L. Hadley to make arrangements to have the old generator picked up. It proved to have an interesting history, as well as being a valuable addition to the growing collection of motors and generators.

Used in War Years
Mr. Kernighan advised that he had acquired the old generator from Lorne Edwards of the Edwards-Day Limited manufacturing firm, Dundas Street West, Toronto, in 1957, before Beacon Chemicals Limited had moved from Toronto to Milton. It was intended by Mr. Kernighan to use the bi-polar D.C. generator for electric welding, but it proved unsuitable because of its low voltage and was subsequently left in storage in the Milton plant. The dynamo's early history seemed lost in the mists of time.

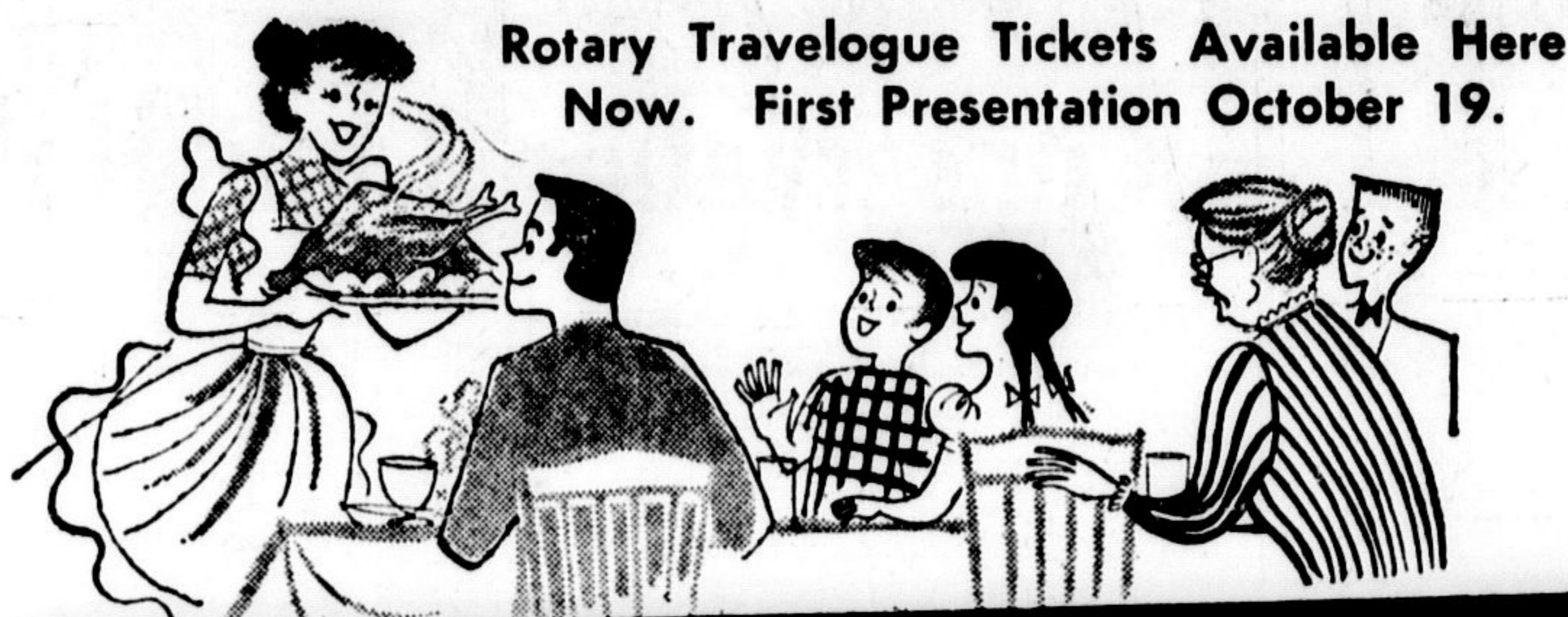
However, a former veteran foreman, John Goodman, now 79 years old, who lives in Toronto, was located. He was able to reveal the origin of the old generator. It had been purchased during World War I, in late 1915, directly from the inventor, Charles Gaylord in Chicago, Illinois, for the then big sum of some \$400. Mr. Goodman had ordered it for the former General Leather Goods Company, Bathurst Street near Davenport Road, Toronto, to permit continuation of electro-plating work for that firm which was

formerly done in Germany, and had been cut off by the war.

The generator served well in this capacity for five years and then was used by the G. E. Edwards Company, Christie Street near St. Clair Avenue West, Toronto, for nickel-plating work for over 15 years. The old dynamo then was acquired by Lorne Edwards, grandson of J. E. Edwards for the Edwards-Day firm. However, it did not get much service and remained mainly on the shelf for some 20 years in this company's plant until Mr. Kernighan obtained it.

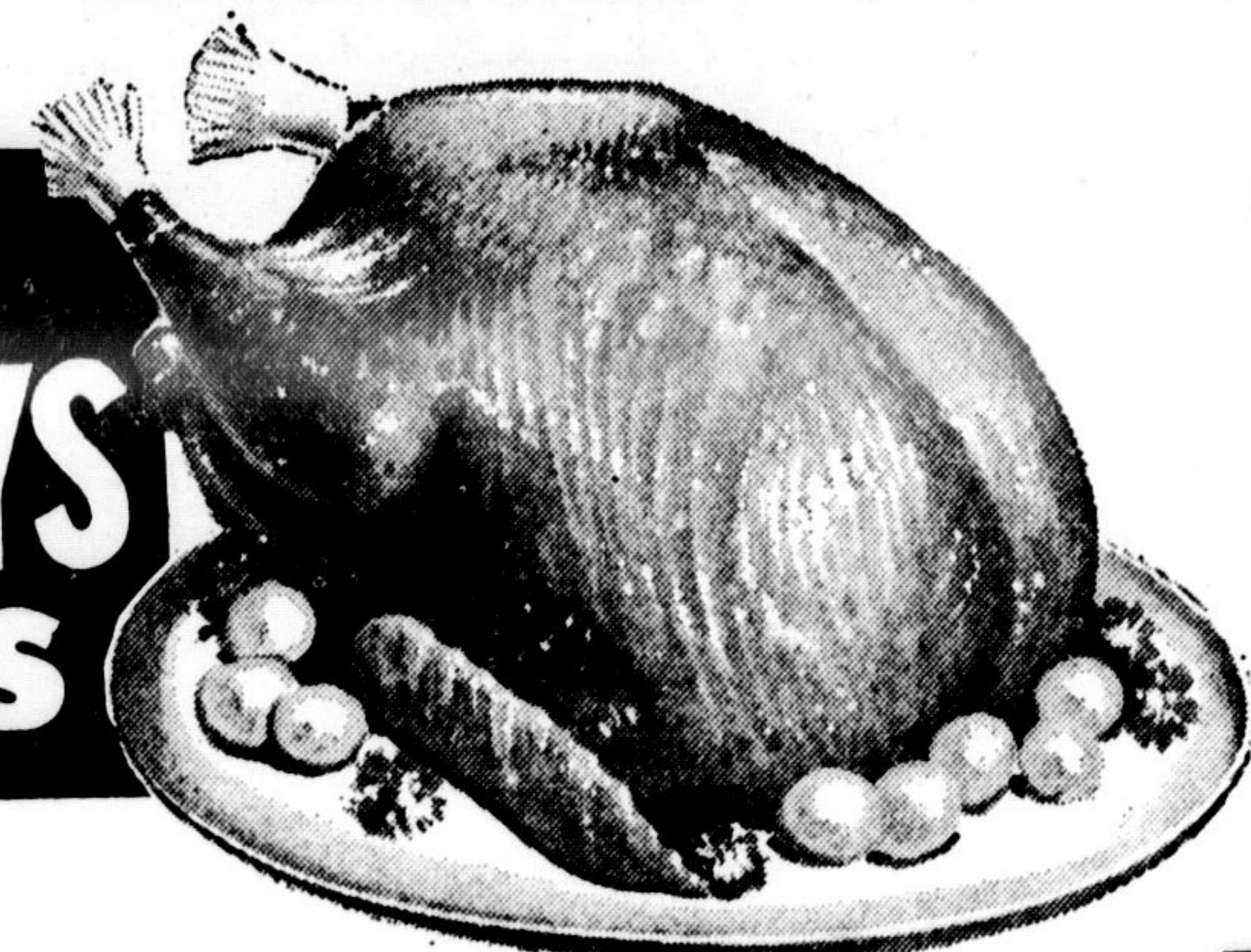
Many Donations to Museum
T. E. Dietrich, Museum Co-ordinator for Ontario Hydro, said that library research is being done to learn the background of Charles H. Gaylord, the maker of the old dynamo, who appears to be one of the more obscure electrical inventors of the 1880's.

Mr. Dietrich added that since Ontario Hydro is planning a non-profit, educational museum, many persons like Mr. Kernighan are generous in giving old pre-electrical era appliances, such as candle lanterns and electrical items in their possession to the Hydro Museum collection, because they realize that these things will be preserved that otherwise might become lost, and will be put to valuable educational use.



Rotary Travelogue Tickets Available Here Now. First Presentation October 19.

Compare at 89c! -- Hostess Instant
COFFEE 6 oz. Jar **69c**



Tender Young Turkeys

PRIZE THANKSGIVING BUYS
—from TURKEY to PIES

Compare at 49c!
NEW LABEL NEW PROCESS

YORK PEANUT BUTTER
16-oz. Jar **39c**

Fully Cooked — Short Shank Skinless (Shank Portion)

SMOKED HAM **69c** lb

MILD SEASONED — PURE PORK
SAUSAGE MEAT **45c** lb

HEAT AND SERVE — FULLY COOKED — WELL TRIMMED
HAM Slices **89c** lb

FOR LUNCHES OR SNACKS — MILD SEASONED
BOLOGNA **35c** lb

Compare at 65c! — Fancy Quality Sockeye 1/2 Tin
CLOVER LEAF SALMON **59c**

Compare at \$1.39! — KRAFT 2-lb. Loaf
VELVEETA CHEESE **\$1.15**

Compare at 2 for 41c! — Fancy Cream Style 15-oz.
GREEN GIANT CORN **2 FOR 35c**

Compare at 69c!

STUART HOUSE

FOIL WRAP

25 Feet by 18-in. Roll

59c

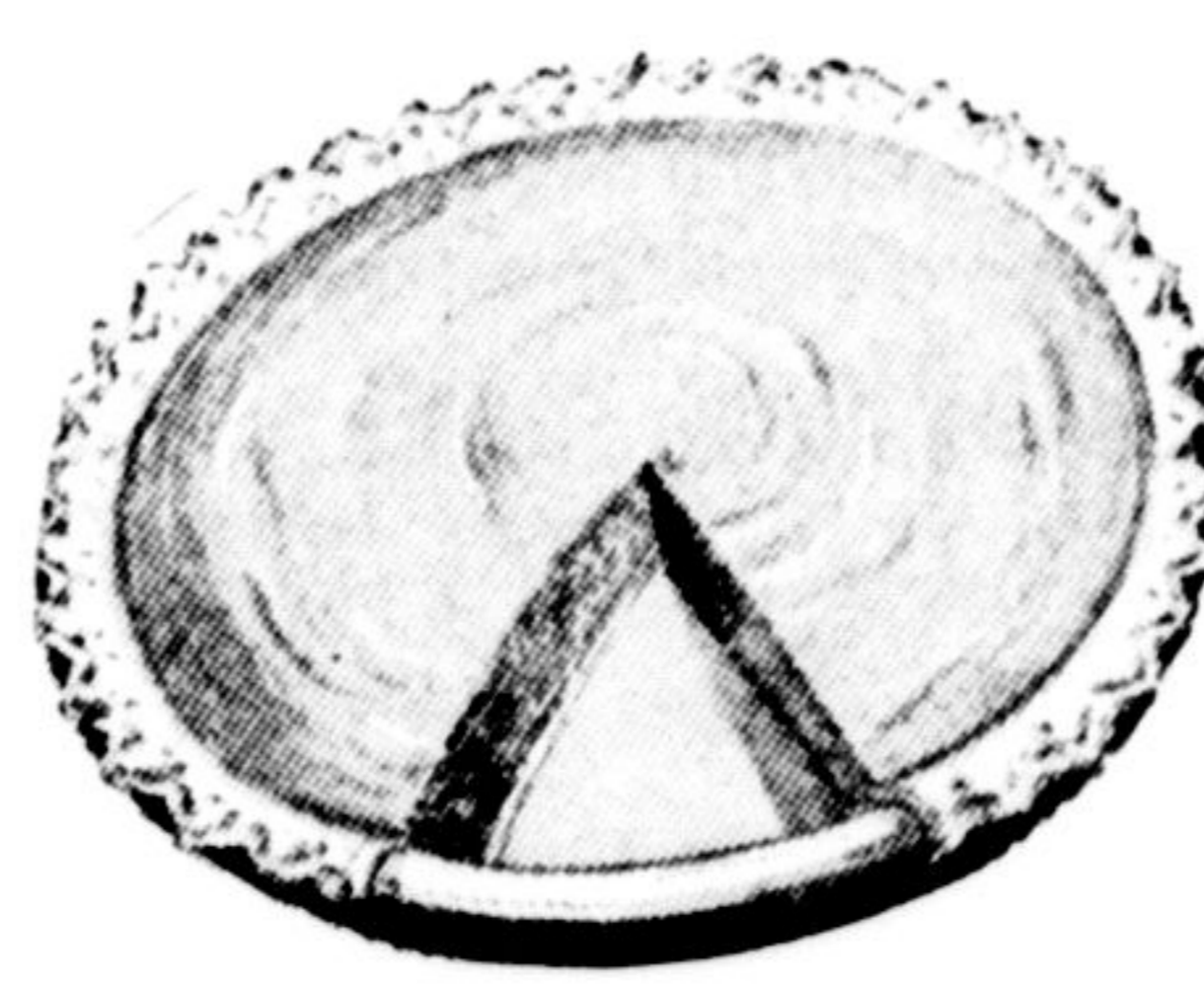
Compare at 25c! — New Taste Treat

LEE'S FANCY PINEAPPLE

CRUSHED OR TID BITS

20-oz. Tin

20c



THANKSGIVING PIES
BAKE 'EM or BUY 'EM

COMPARE AT 25c! — FANCY QUALITY 28-oz. TINS
LIBBY'S PUMPKIN **2 FOR 39c**

COMPARE AT 53c! — MAPLE LEAF 28-oz. TIN
MINCEMEAT **45c**

COMPARE AT 37c! — E. D. SMITH'S 20-oz. TIN
APPLE PIE FILLER **3 FOR \$1**

COMPARE AT 74c! — PASTRY 7-lb. BAG
MONARCH FLOUR **65c**

COMPARE AT 31c! — SCHNEIDER'S CRISPY FLAKE 1-lb. PKG.
SHORTENING **29c**

COMPARE AT 27c AND 29c

BETTY'S

ASSORTED JAMS

9-oz. Jar **4 FOR 89c** Case of 12 **\$2.49**

SUPER SAVE FEATURES AYLMEER BRAND

COMPARE AT 23c! 11-oz. BOTTLES
AYLMEER CATSUP **2 FOR 39c**

COMPARE AT 33c! 20-oz. TINS
AYLMEER WHOLE TOMATOES **2 for 49c**

COMPARE AT 37c! 48-oz. TIN
AYLMEER TOMATO JUICE **29c**



NEW CROP LOUISIANA

YAMS **10c** lb

CRANBERRIES

OCEAN SPRAY FRESH **25c** LB. PKG.

Put YOURSELF in the Picture NOW!

Plymouth

Plymouth is twice the tiger for '66! Choose now from two great new Plymouth lines — the handsome new Plymouth Fury, and, brand-new for '66, the hot new Plymouth Belvedere.



Fury III — 4-Door Hardtop Wheelbase 118.0"

FURY

Beautifully styled, big and spacious. Fury offers a good selection of models and power — to prove that nothing goes like Fury!



Belvedere

Belvedere is the line of hot new performers — powerful and potent! Designed to fit a young family's budget!

The Home Of Cars With The 5-Year — 50,000 MILE WARRANTY

JOHNSON BROS.

295 Main St.

MILTON

TR 8-9942

LEDWITH'S

