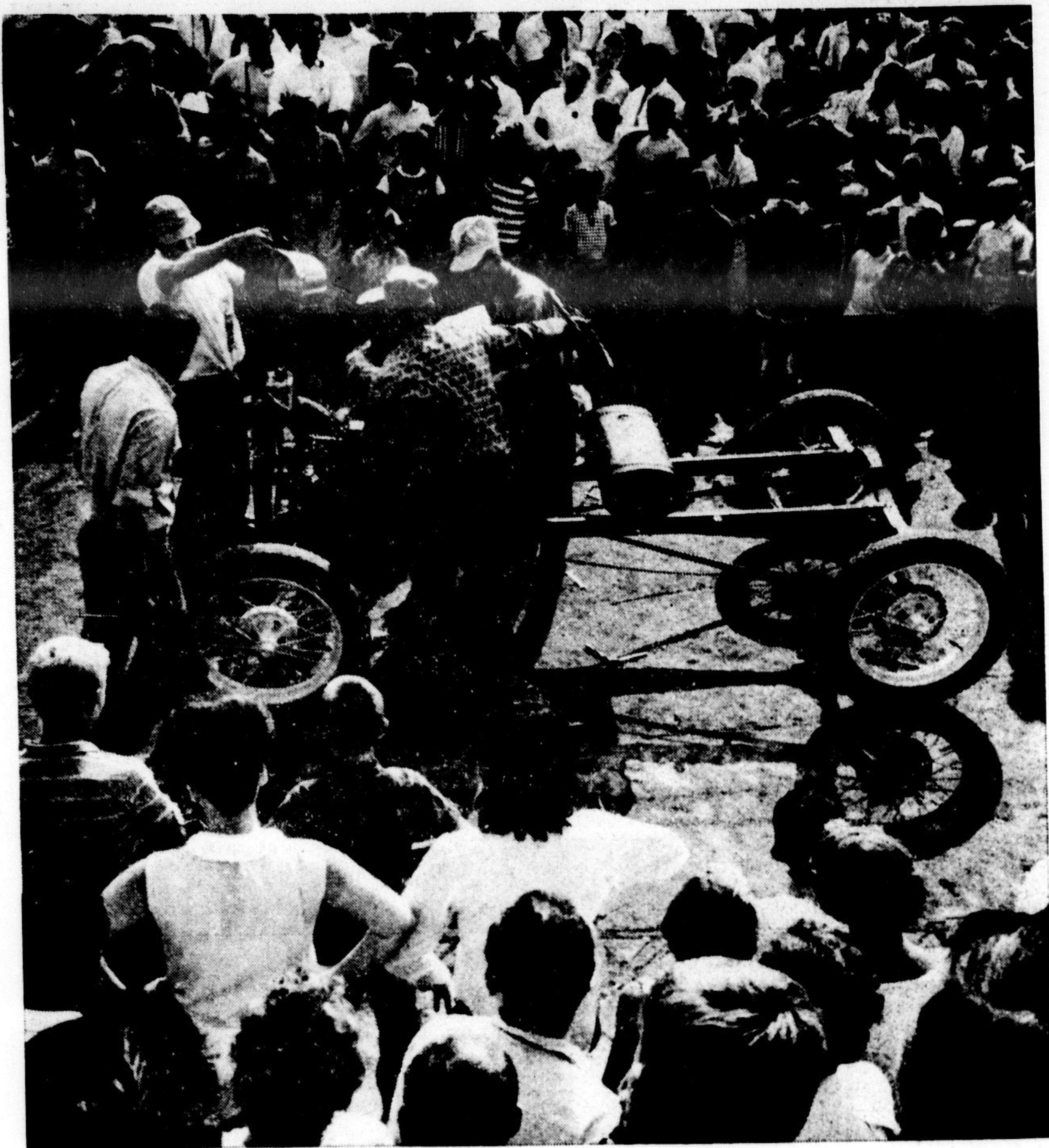
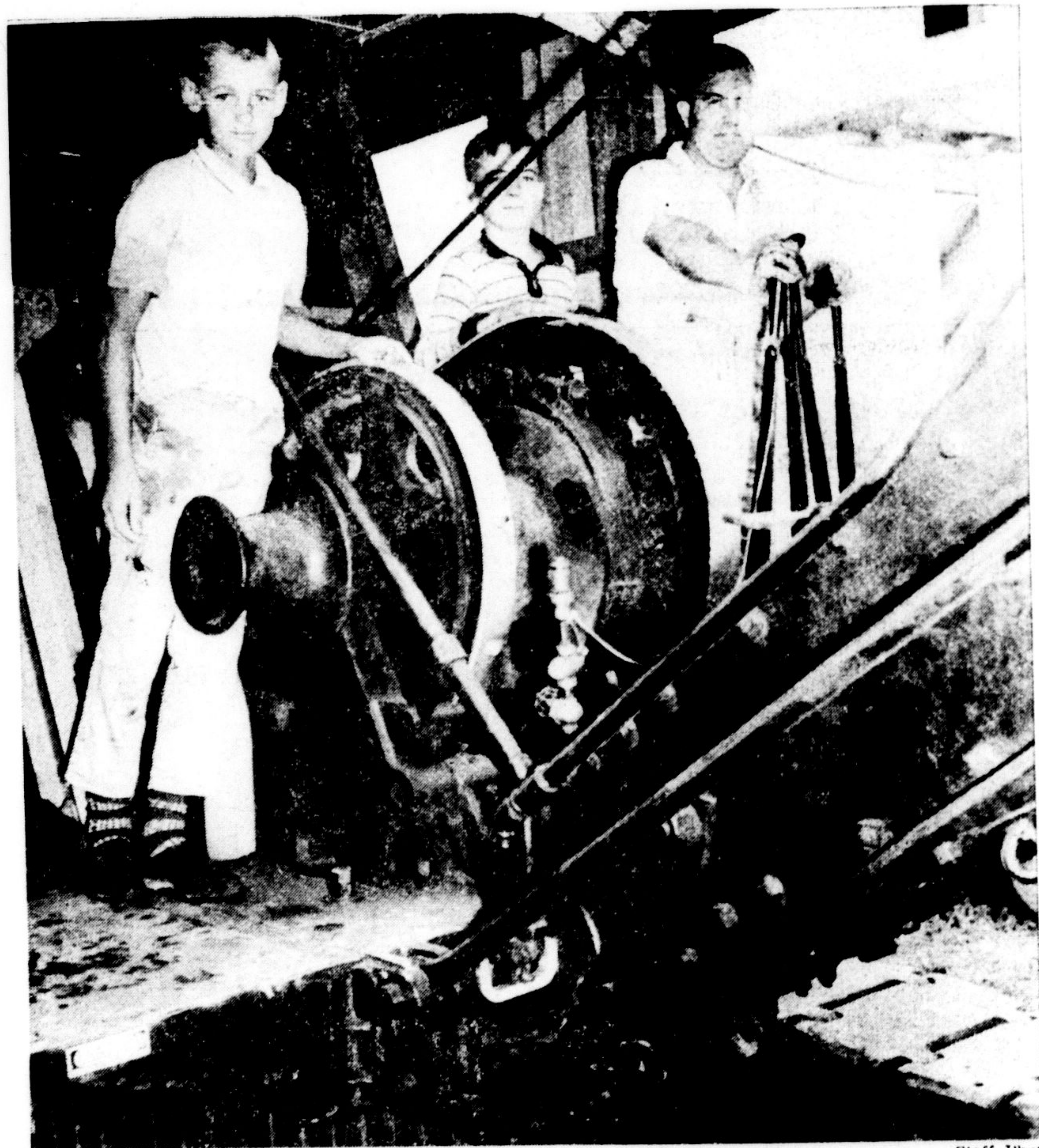


## Unusual Steam-Era Features



—Staff Photo

**ASSEMBLING A MODEL "T" FORD** was quite a chore for the late Henry Ford, but no chore to a team of six men from the Steam-Era organization, who can piece together dozens of parts and drive it away in less than six minutes. They did it several times during the weekend reunion in Milton—starting with the parts laid out in front of the grandstand, and ending up with an operable automobile scant minutes later. The assembly crew is shown putting the finishing touches on one.



—Staff Photo

**ONE NEW FEATURE** at the 1965 edition of Steam-Era was the appearance of a 1927 Bucyrus-Erie steam shovel that weighed 35 tons. It was purchased by Ross Johnson and restored by him and fellow workers at Ontario Hydro's Lakeview Generating Station. The men searched all over the country to find parts, and after 10 men spent a lot of spare time on it over a 12-month period, it was restored and ready to go. Ross, right, is shown at the controls with his sons, Douglas and Peter.

**WHAT'S IN A NAME?**  
A Minneapolis woman was expecting three calls: one from Wally, the mechanic working on her car; one from cousin Chuck and one from Jack, her pediatrician.

The phone rang and a man's voice said hello. "Wally?" she asked. "No," the man said.

"Chuck?" she asked again. "No."

"Jack?" It wasn't Jack either. It was her minister who after a brief chat, hung up — probably feeling sorry for the gal's husband, whose name was Mel.

### KERR'S REXALL PHARMACY



**PRESCRIPTIONS**

K. H. ELSLEY, B.Sc., Ph.M.

**24 HOUR PRESCRIPTION SERVICE**

TR 8-4492 — After Hours TR 8-6961  
FREE DELIVERY — REVLON COSMETICS

### NEED SOME HELP FOR BACK TO SCHOOL FINANCES?

Call Us Today

Because You Can Turn With Trust To

**ATLANTIC afc FINANCE**

CORPORATION LIMITED

208 Main St. Milton 878-2855

# \$UPER \$AVE SETS the PACE!

SPECIALY SELECTED FRESH FOR ROASTING

**PORK BUTTS** BONELESS

**59**<sup>c</sup> lb.

VALUE CHECK'D BRANDED TENDER DELICIOUS CHOICE JUICY

**STEAKS** RIB or CLUB

**89**<sup>c</sup> lb.

MILD SEASONED SWEET PICKLED Cryovac Halves

**COTTAGE ROLLS**

**65**<sup>c</sup> lb.

IDEAL FOR THE QUICK MEAL — TENDER TASTY

**ESSEX WIENERS**

**53**<sup>c</sup> lb.

MILD CURED WELL STREAKED

**TREND BACON**

**89**<sup>c</sup> lb.

COMPARE AT 69c! — NEW SIZE

**MAZOLA OIL**

24-oz. BTL.

**49**<sup>c</sup>

COMPARE AT 41c! AYLMER FANCY QUALITY

48-OZ. TINS

**TOMATO JUICE**

**3** FOR \$1

COMPARE AT 33c!

20-OZ. TINS

**Smart's Peaches**

**4** FOR \$1

COMPARE AT 23c!

11-OZ. BOTTLES

**KETCHUP** E. D. Smith's TOMATO

**6** FOR \$1

COMPARE AT 2 for 41c! — DARK RED KIDNEY

15-OZ. TINS

**STOKELY BEANS**

**6** FOR \$1

MARKED 69c! — CLUB HOUSE HOMOGENIZED

2-LB. JAR

**PEANUT BUTTER**

**59**<sup>c</sup>

COMPARE AT 85c! — BUY 1 — GET 1 FREE!

TWIN PACK 24-OZ.

**MIR LIQUID** DETERGENT

**73**<sup>c</sup>

Compare at 97c

**MAXWELL HOUSE**

**COFFEE**

1-LB. Bag

**79**<sup>c</sup>

Compare at 2 for 57c

**TENDER FLAKE LARD**

**2** LBS 45<sup>c</sup>

Compare at 49c

**JAVEX**

64-OZ.

**39**<sup>c</sup>

**LOCAL - NEW  
FRESHLY PICKED**

**CORN**

**12** EARS FOR **29**<sup>c</sup>



BEEF AND RICE PERFECT PARTNERS

**MINUTE RICE**

Compare at 51c  
14-OZ. PKG.

**43**<sup>c</sup>

# LEDWITH'S

