

Town, Townships Sharing Fire Budget of \$35,393

Milton Fire Department operates on a budget of \$35,393 this year. It takes a lot of money to keep a fire brigade's equipment in excellent shape, and to pay for their supplies and fire prevention programs — but the old saying about an ounce of prevention is worth a pound of cure, rings true — and every cent of the money is well spent.

The brigade covers a fire area covering roughly 100 square miles, including the entire town of Milton plus portions of Oakville, Burlington and the rural townships of Esqueving and Nassagaweya.

Board in Charge

A Fire Area Board comprising councillors or council delegates from the five municipalities is the overseer of fire department expenses and activities. These men meet about once a month in Milton to discuss the fire department's business with the fire chief. Operation of the brigade is pretty well left up to the chief's good judgment. However, he is directly responsible to the Fire Area Board at all times.

Chief Clement is the only full-time salaried employee of the Fire Area Board. Other officers of the brigade are elected by the men of the brigade, and they

are all part-time firefighters who hold other jobs. The Fire Area Board ensures that municipalities share the expenses on a percentage basis, using their assessment rolls for a guide. Only the assessment in the fire area covered by the department is counted for this percentage.

Each One's Share

This year then, Milton pays \$13,902 of the fire area's total budget of \$35,393. Oakville's share is \$6,749; Burlington's \$5,181; Esqueving's \$4,866 and Nassagaweya's \$4,693.

The fire brigade has a separate treasury, kept by the men of the department with Don Toletzka as treasurer. They raise money by lucky draws and the annual Thanksgiving and Christmas bingos. It is used to purchase the men's dress uniforms, to sponsor a minor hockey team called the Junior Firefighters, for the annual outdoor picnic for firefighters' wives and children, for cleaning materials in the fire hall, for the wreaths the brigade donates at Decoration Day and Remembrance Day parades, and for cash prizes donated to students in the public and separate schools for the annual poster competition.

O.F.L. Convention

Ross Britton Local Delegate

Ross Britton was delegate from local 4574, United Steelworkers of America (at Canadian Meter Company) at the eighth annual convention of the Ontario Federation of Labor in North Bay.

In his opening address, President David Archer stated, "We have a country whose destiny is assured. We have been endowed with natural resources galore. The skill and talents of people from every land who immigrate to Canada have combined to give us truly a land of great opportunity. Yet there are those among us who are calling for division, and others who are contributing to that division by suggesting good riddance to the few fair-haired persons who doubt our future greatness."

"I am proud to say the trade union movement has no such

doubts. Our members, French-speaking and English-speaking, from Quebec and Ontario and every other province and from every ethnic origin, are determined that we shall build a nation that shall truly have domination from sea to sea and where each individual shall be judged on his worth regardless of his language, race, religion or country of origin."

GOOD LANDLADY

The landlady showed her new lodgers into the room, and hovered about anxiously while they looked around.

"Now I do want to be a good landlady," she exclaimed, "so if there's anything you want that I haven't got, do let me know, and I'll show you how to do with out it."

SURROUNDING COUNTRY ABOUNDS IN BEAUTY



PICTURESQUE DAM AT J. S. BENNETT'S MILL
A beauty spot in the hamlet of Progression



LOOKING TOWARD TANSLEY BRIDGE FROM VALLEY
Note columns from the old bridge below



NEW CARLISLE COMMUNITY POND
A beautiful spot to view the lovely fall colors

The Canadian Champion

MILTON, ONTARIO, THURSDAY, OCTOBER 15th, 1964

Section Three.

Vol. 105.—No. 23.

Ideal Fall Color Tour

Map Out "Cuesta" Drive Along Watershed

At the request of many readers, *The Champion* is reprinting the feature on the scenic "Cuesta Drive" first written by staff reporter Roy Dwyer two years ago. This weekend would be an ideal time to try it out.

Would you enjoy a pleasant Sunday drive this weekend through some of the most beautiful parts of the district's countryside?

Then pack up a picnic lunch, load the family in the car and

come with me on a lovely 27-mile "Cuesta Drive" through the watershed of the 12 Mile Creek. You will see a riot of fall colors if you go soon, for the leaves are quickly turning, and there's no better time than October for enjoying Nature's autumn art, sprinkled through the countryside in delicate hues of orange, yellow, green and brown colors.

Along our route, we'll wonder at the beauty of a meandering creek deep in the scenic valleys, the towering faces of the Niagara Escarpment, and those tiny rural community churches, dating back to 1853.

The Cuesta (pronounced Kew-esta) Drive is a beautiful scenic route mapped out by members of the Halton Region Conservation Authority. The overall drive is over 60 miles long, but today I'll describe the first half of it. Normal driving time for this route is two to three hours, but you could spend the whole day on it if you wish to stop your car and walk around at the many stopping points.

This portion of the Cuesta is entirely within the town of Burlington and the Township of East Flamboro, Puslinch and Nassagaweya Townships.

To start this scenic drive, go south on Highway 25 from Mil-

ton to Highway 5 (Dundas Highway), continue straight south on the Second Line to the Queen Elizabeth Highway and turn toward Hamilton. Get onto the North Service Road under the bridge and head west for about a mile to the Trafalgar Town Line Road. Turn right, and you are ready to start.

Follow the "Cuesta Drive" arrow signs all the way. The following is a mileage guide to give you more specific directions, along with highlights of the countryside tour. Maps are available at the Conservation Office, Main St., Milton.

Go 1.4 miles north on Town Line, just past the Upper Middle Road, and here you will first see the 12 Mile Creek, winding its way through a beautiful valley, banked with red clay. Follow this road for another 1.4 miles as it curves around the side of the valley, and you will reach the Dundas (No. 5) Highway.

Turn left on Highway 5, and drive .6 miles, then turn right onto the Appleby Line. Here look to the left, and you'll get a good view of part of the Niagara Escarpment.

Drive 1.8 miles and cross the creek, deep in a picturesque valley.

Go .2 miles and if you turn left

at the top of the hill you'll find a road leading down to a picnic spot at the side of the creek.

Go another .2 miles past the Zimmerman United Church, and turn left on No. 2 Sideroad.

You'll cross the creek again .4 miles along this road, down in a sloping valley. Keep going straight ahead, and when you drive up out of the valley enjoy a breathtaking view of the escarpment straight ahead of you.

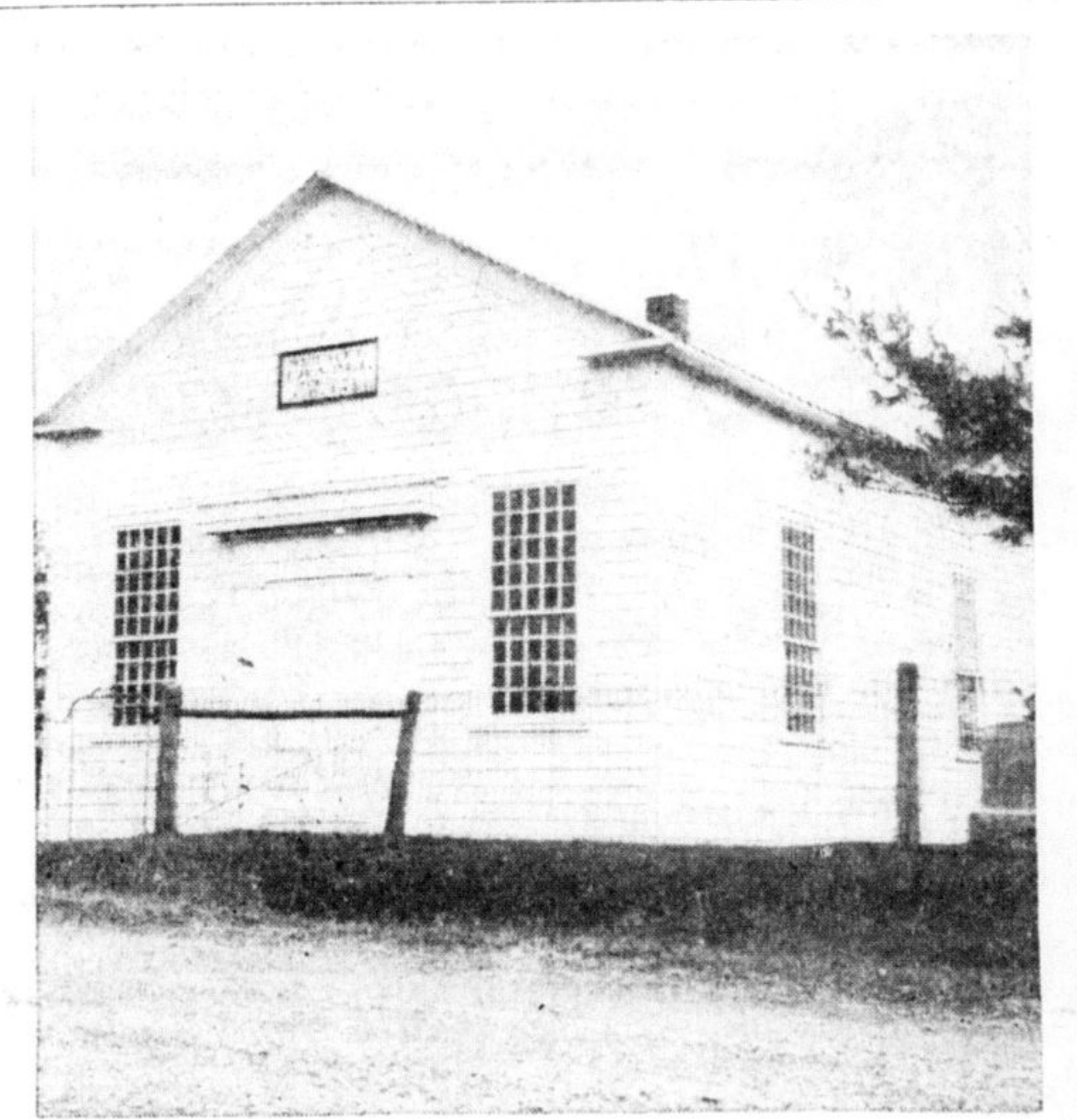
Drive 1.1 miles from that bridge over the creek, and turn right at the pioneer cemetery onto Walker's Line. Stop here to look back at the valley you just left — the view is terrific. Then continue north on this road.

Go 1.8 miles and turn left onto Five Sideroad where the Walker's Line continues down a steep hill.

Go .9 miles and cross over the Guelph Line at Lowville United Church, a Wesleyan Methodist church erected in 1872.

About .4 miles further along this road, just past Fairview Public School, look to the right and you'll see Vern McArthur's man-made pond, in a beautiful setting.

Drive 1.5 miles (watch the nar-



THE PRETTY LITTLE BETHEL CHAPEL, 1853
A good stopping-off point on your trip

row, curving road) and turn right on the Guelph Line, go a few yards and jog left onto Five Sideroad again.

Go .4 miles and at the top of the hill you'll find the pretty little Bethel Chapel, a church erected in 1853. This closed down several years ago, but descendants of the pioneers who worshipped there still hold a memorial service once each year, and the building is kept in good repair. This is a good spot to look back and enjoy the view.

Drive along .9 miles and turn right onto the East Flamboro Town Line. About 1.4 miles further, make a right turn on the same road.

Go another .7 miles and stop at the corner to see the J. S. Bennett Mill, Progression. Here

a dam holds back the creek, forming a beautiful falls and providing water to run the old mill. On the left side of the road, a clean spring feeds pure water to an ancient horse trough.

Go .9 miles on the same road and turn right onto the Waterdown Road when you reach new homes in the south end of Carlisle village.

Drive .4 miles to Carlisle Community Pond, another project of the Conservation Authority. Near it is the Carlisle United Church, built in 1891. Entrance to the Community Pond and recreational area is from 10 Sideroad, around the main Post Office corner.

Turn right here and start heading back toward Milton (about 11 miles) along 10 Sideroad. Points of interest on the way home include a beautiful man-made pond near Flamboro railway station, some thick forest of Kilbride and its United Church, Coulson's Corners and St. George's Anglican church at Lowville's northern end, views of the cherry orchards and grape groves, and another close view of the Niagara Escarpment just below Rattlesnake Point.

Along your route, you'll find many other points of interest. There are plenty of service stations and snack bars where you will get gas, a bottle of pop or candy bar, and you'll find commercial flowers, honey, fruit and vegetable stands scattered along the way, as well as two horse ranches.

If you wish to see Lowville Park, turn right at Coulson's Corners on the Guelph Line. Rattlesnake Point Conservation Area is included in the second half of our Cuesta Drive, but if you like to see it on this trip, turn left from 10 Sideroad onto the Bell School Line, then left at the top of the hill and left again on Appleby Line.

\$2,000 Grant

The Province of Ontario Council for the Arts has awarded the Five Counties Art Association a grant of \$2,000. \$1,000 is to be used towards the printing of the Association's bulletin and the remaining \$1,000 for conducting a Teachers' Council.

During the Association's annual meeting on October 3 it was ruled officially that the area covered by the Association shall include the counties of Wentworth and York as well as the former five counties of Waterloo, Wellington, Peel, Dufferin and Halton.

NEW

REMINGTON
Model 1100

THE MOST BEAUTIFUL
AUTOMATIC SHOTGUN
IN THE WORLD

- UP TO 55% LESS KICK
- SUPREME DEPENDABILITY — tested with 500,000 shells
- LONG-LIFE — tests prove up to 7 times longer
- CUSTOM CHECKERING is fine lined, uniform, good-looking
- BIG 5-SHOT CAPACITY
- RK-W DU PONT WOOD FINISH is tough, hard, scratch and weather resistant
- NEEDS NO ADJUSTMENT — shoots high base, low base, 2 3/4" magnums
- ALSO AVAILABLE in magnum model chambered for 3" magnum shells

REMINGTON GUNS ARE BETTER BECAUSE THEY'RE MADE BETTER

Sold only by

Authorized

Remington Dealers.

Remington GUN

MCKIM HARDWARE

260 Main St.

Milton

INSURANCE

R. R. FORD

Milton, Ont. TR 8-6357

THIS YEAR MORE THAN EVER BEFORE
ENJOY THE CHRYSLER WAY OF LIFE

CHRYSLER



NEW YORKER 2-DOOR HARDTOP

THE CARS WITH THE 5-YEAR — 50,000-MILE
POWER-TRAIN WARRANTY

Chrysler's famous Power-Train Warranty . . . unique in the Canadian automotive industry . . . tells you two important things about Chrysler people: the confidence they have in the way their products are built and the concern they feel for those who buy their products.

FOR 1965 CHRYSLER has beauty, luxury and dramatic new dimensions in style and performance. Get behind the wheel this week and appreciate the difference.

SEE THEM — TRY THEM — BUY THEM

AT JOHNSON BROS. GARAGE

295 Main St.

MILTON

TR 8-9942



SCENIC CREEK WINDS ITS WAY THROUGH THE VALLEY
Stop here for some excellent colored pictures

CANADIAN NATIONAL

INSTITUTE FOR THE BLIND

MILTON BLITZ

MONDAY, OCTOBER 19, 1964

6 p.m. to 9 p.m.

PLEASE KEEP YOUR PORCH LIGHTS ON!