



THE BURNS RESERVOIR, located on Lot 11, Concession 2 of the Township of Nassagaweya, is being constructed by the Halton Region Conservation Authority as a demonstration to show how a small dam can be built on farm property. Total cost of the project is about \$4,000. Here large bulldozers are shown working on the project.

Five Acre Reservoir Conservation Project

A reservoir which will flood five acres and contain approximately 25 acre feet of water is being constructed by the Halton Region Conservation Authority two miles north-east of Campbellville on Lot 11, Concession 2, of the Township of Nassagaweya. The project, to be called the Burns Reservoir, will cost approximately \$4,000.

Halton Region Conservation field officer Dave Murray reported this week that the reservoir is being constructed partially as a demonstration to show how a small dam can be built on farm property. It will also partially increase the water table in the area.

The dam itself will cost about \$1,500 but it will cost a total of nearly \$4,000 to deepen it. It will hold a depth of eight to nine feet of water. This is the third dam of its type in the County and it is slightly changed from the original design. The Burns dam is designed for use of a measure jack so that it can be kept water tight.

It is basically an earth embankment with a concrete spillway at the overflow section. Construction will take approximately four days to complete.



FORD FOR 1965: The all-new, made in Canada 1965 Ford has only its heritage as a reminder of the past. From the 15 inch low-profile tires, to the chassis with its torque box frame and new coil spring suspension, to the crisp, angular styling, the Ford is completely changed. Under the hood is a brand new 240 cubic inch six, developing 150 horsepower plus a three-speed fully synchronized transmission. Three V-8's up to 330 h.p. are offered with automatic or four-speed gear boxes. Stand-up luggage room and reversible keys with keyless locking are standard.

Toronto Ethnic Club Picnics at Caledon

A club from Toronto chose a Milton district country club for their annual picnic and dance on Saturday. The German-Canadian Business and Professional Associates of Toronto spent the afternoon and evening at Caledon Town and Country Club, Saturday.

Werner Graf, organizer of the event, explained the Caledon Club location was chosen through Kurt Langwisch, who is a member of the club and the G.C.B.P.A.

Seed potato certification was given to 34 varieties of potatoes in 1963. Sebago and Kennebec leading in acreage.

University Women Begin Fall Season

New members were welcomed at an informal coffee party which began the fall season for Milton University Women's Club. Hostess was Mrs. R. G. Frame, Glen-sney Farms, R.R. 3, Milton. A variety of delicious desserts was served and Mrs. L. C. McQuat poured tea.

The program for the coming year was reviewed by Mrs. Dwight Engel and Mrs. E. Clutton invited members to join the interest groups — arts, current events, education, great books, modern books and status of women.

Mrs. F. Ruhl presented a report from last year's great books and modern books groups.

Mrs. P. Allman, the president, presided. Next meeting is October 1 at the home of Mrs. K. Marshall, R.R. 5, Milton, when Mrs. H. Powys will report on the triennial conference of the Federation of University Women at Winnipeg.

More than 1,400 persons from Eastern European countries have been reunited with their families in Canada as a result of Red Cross intervention in Canada and abroad.

SONG RALLY

at
**FAIRVIEW
PUBLIC SCHOOL**
Wednesday, Oct. 7
at 8.30 p.m.

Hymn Singing — Organ Solos
Piano and Organ Duets
Organist: Mr. Paul Daniels

Song Leaders:
Rev. Paul Field
Mr. Stafford Love

Sponsored by
**Lowville United Church
Music Committee**

Royal Canadian Legion — Branch 136

FALL FROLIC

SATURDAY, SEPTEMBER 26 - 1964

MUSIC BY THE MANHATTANS
REFRESHMENTS
Dancing 8.30 to 12

ADMISSION \$3.00 PER COUPLE

TICKETS AVAILABLE FROM
LEGION MEMBERS

PROCEEDS — SPORTS COMMITTEE

Ford Undergoes Complete Change New Model Revolution in Design

Not since the switch to envelope styling 15 years ago, when Forders merged with the body, has the Ford car undergone such a complete change, literally from road to roof.

"The 1965 Ford is more than evolution, it is revolution in design, introducing a totally new shape, a completely re-engineered frame and rear suspension, a myriad of detail improvements all too important to be ignored," says John D. King, vice-president marketing, Ford of Canada. The new models are on display this week at your local dealer, Trafalgar Motors, Main St.

1965 Ford passing through a driving rainstorm at the dark of midnight could hardly fail to be recognized, so thorough is the

change in styling. Not so much as a round taillight is left to identify the Ford traditions of the past decade. In fact the Ford taillights are now hexagonal in shape, only round lens within, on the Custom series, remaining as a reminder of the past.

Between the new lights is a trunk with styling pursued for buyer benefit. The volume is greatly enlarged while the lift-over height has been reduced a full five inches, a boon for housewives struggling to lift the weekly groceries over the sill and into the trunk.

From the rear forward the Ford for 1965 flows in crisp, straight lines for a lean, clean angular look. Sides are slim, the silhouette functional, and purposeful. Fenders achieve a hooded effect at the front, over dual headlights vertically mounted in a distinct departure from

usual Ford practice. The grille is thrusting in classic fashion, though simple in effect, a composition of slim horizontal bars.

Curved Side Glass

Bumpers on the new Ford are a far cry from the massiveness of yesteryear, clean, integrated with the body form, yet immensely strong. Rooflines get the benefit of curved side glass, with fastback variations in hardtop models. Sedans, wagons and convertibles all have their own unique roofs.

Though series models make-up in the 1965 Ford line is visually the same, a superb new version is introduced, the Ford LTD. Here is a Ford with finery, a car for those who prefer to emphasize luxury in elegant surroundings. The LTD features an optional vinyl-covered roof in town-car form, plush interiors, and discreet touches of special trim.

Diocesan Council Meets in Hamilton

The Executive of the Hamilton Diocesan Council met at the home of Mrs. G. L. Schneider, President, Hamilton on Saturday.

Plans for the coming year included more emphasis on the Retreat movement, a program to stimulate interest in Catholic education to be extended to all regions of the Diocese, and introduction of panel discussions to the Fall Regional meetings. Dates of these meetings were announced: Oct. 4, Owen Sound; Oct. 18, Kitchener; Nov. 1, Brantford; Nov. 8, Hamilton.

Congratulations were extended to the many graduates of Catholic schools in the Diocese who obtained Ontario Scholarship standing.

St. Francis Xavier Parish, Stony Creek, will be hostess council for the 1965 Diocesan Convention to be held June 4, 5, and 6, 1965.

Attending from the Milton area was Mrs. R. W. Clarke. Resolutions Convener who urged councils to present thoughtful resolutions during the year for preparation for submission to the annual convention.

PROFESSIONAL DIRECTORY AND TRAVELLERS' GUIDE

TRAVELLERS' GUIDE

CANADIAN PACIFIC RAILWAY
Standard Time
Going East: Train 338, leave Milton 10.39 a.m., arrive Toronto 11.20 a.m. daily.
Going West: Train 337, leave Toronto 5.20 p.m., arrive Milton 5.57 p.m. daily.
TR 8-4471

OPTOMETRISTS

ARTHUR A. JOHNSON
184 Main St., Milton
Phone TR 8-9972 Res. TR 8-9678
Tuesday Afternoons
Thursday Evenings
Friday Mornings

CHIROPRACTORS

Doctor of Chiropractic
A. P. KENT, D.C.
237 Kings Court Crescent
Corner Martin St.
Monday, Wednesday, Thursday
1 p.m. to 9 p.m.
Tuesday and Friday
9 a.m. to 6 p.m.
Saturday 11 a.m. to 3 p.m.
Phone 878-2031

FUNERAL DIRECTORS

McKERSIE FUNERAL HOME
Complete Air Conditioning
Sincere Courteous Service
TR 8-4452
Night or Day

INSURANCE

DENNEY CHARLES
Representing
**CO-OPERATORS INSURANCE
ASSOCIATION**
Sponsored by
Federation of Agriculture
Auto - Fire - Family and Farm
Liability - Accident & Sickness
Phone TR 7-2084
Georgetown

DENTAL

DR. W. C. P. WRIGHT
Dentist
17 Martin St.
Phone 878-2491
For Appointment

ACCOUNTING

EARL G. BLACK
B. Comm., R.I.A., C.A.
Chartered Accountant
Municipal Auditor
163 Main Street
Box 460 Milton, Ont.
TRiangle 8-6542

LEGAL

KENNETH Y. DICK
Barrister, Solicitor, Notary Public
196 Main Street
Telephone TR 8-4491

HUTCHINSON & THOMPSON

Barristers and Solicitors
T. A. Hutchinson (retired)
F. David Thompson
219 Main St., Milton 878-2841

SHARPE and NICHOLS

W. S. SHARPE
A. J. NICHOLS
Barristers, Solicitors and
Notaries Public
207 Mary St., Milton
Telephone TR 8-2339

PUBLIC LIBRARY HOURS

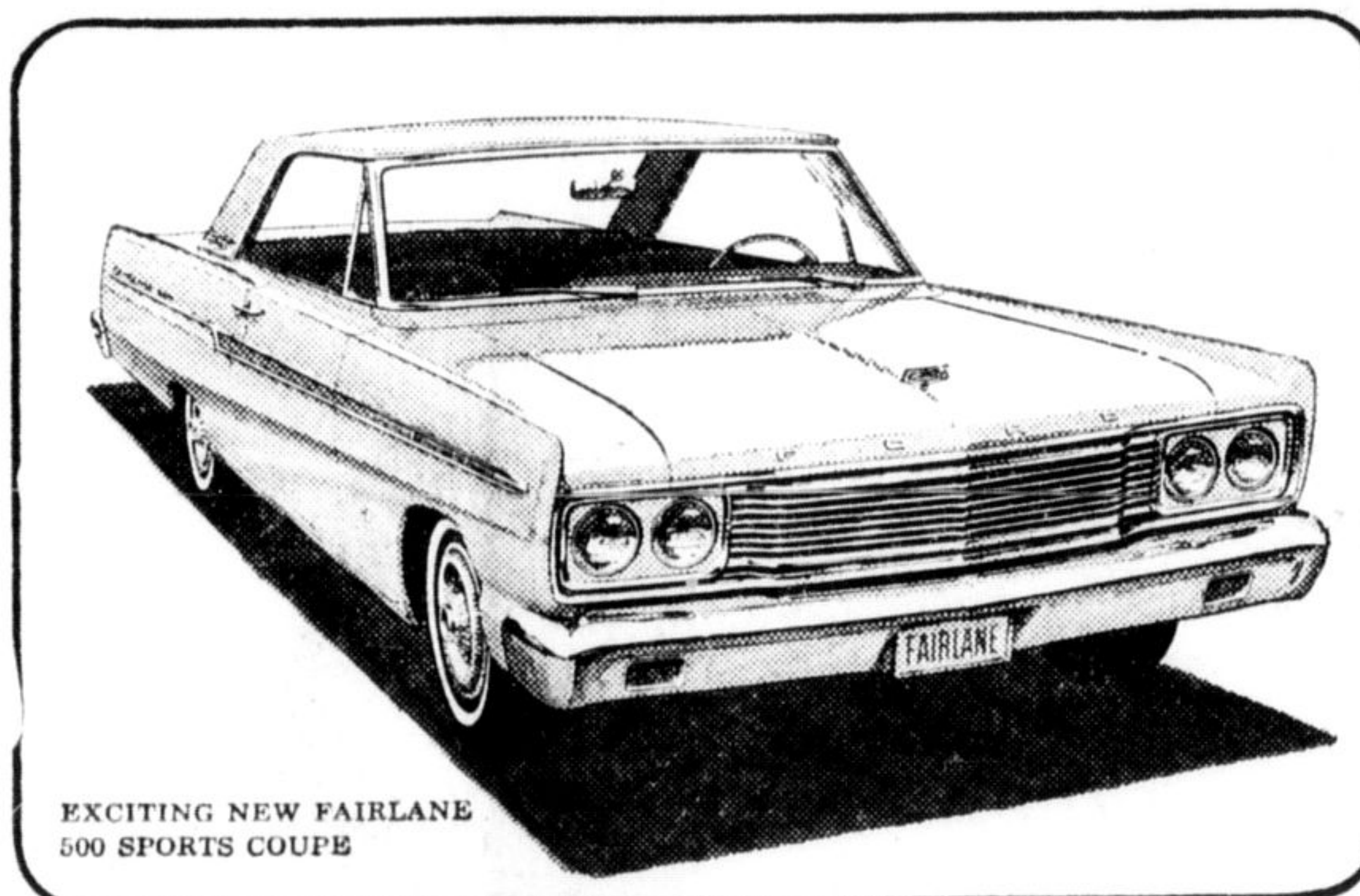
Monday 12 noon - 5 p.m.
Tuesday 1.30 - 5, 7-9 p.m.
Wednesday Closed
Thursday 1.30-5, 7-9 p.m.
Friday 1.30-5, 7-9 p.m.
Saturday 9.30-12, 1-5

ARCHITECT

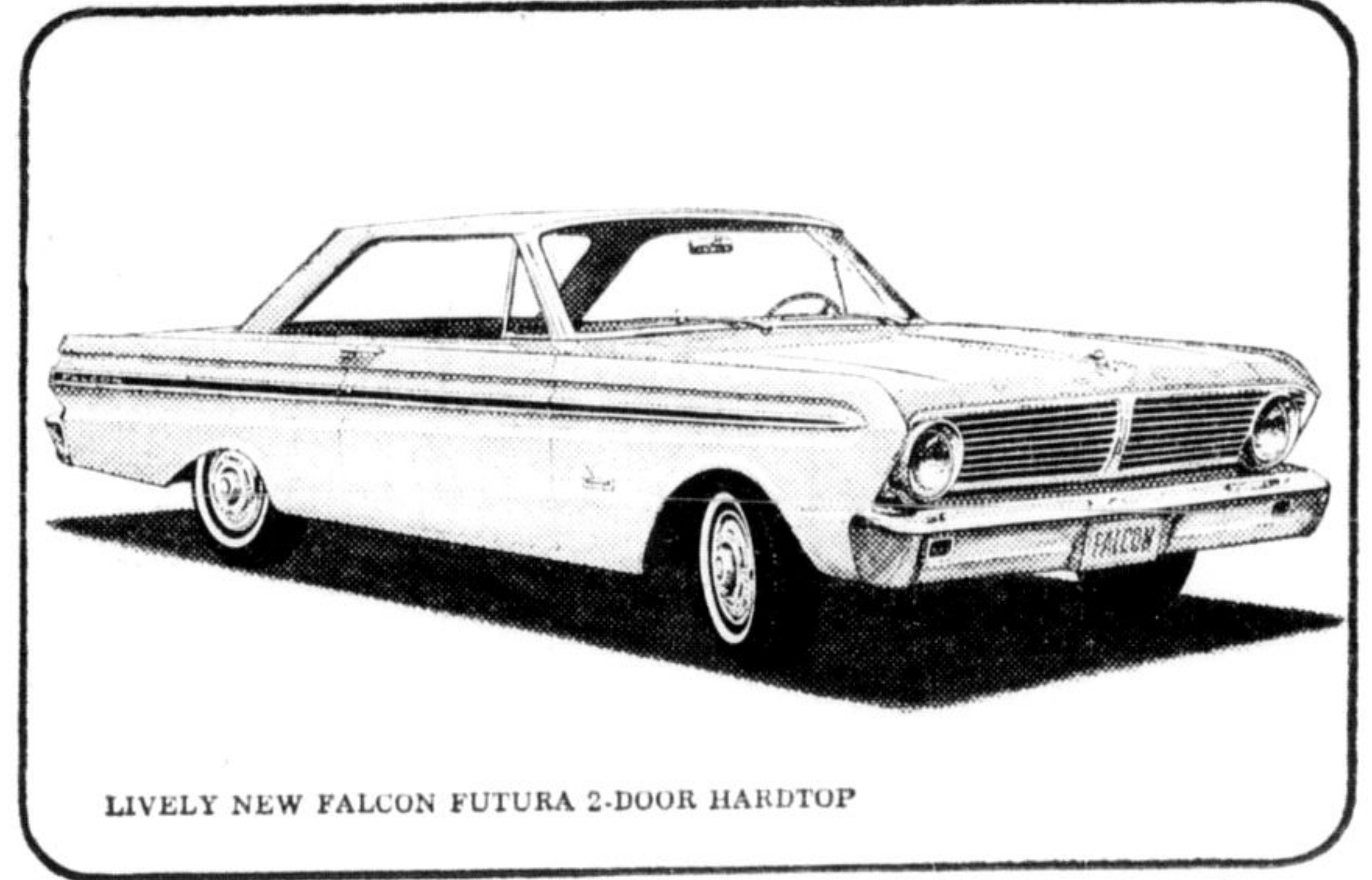
DONALD E. SKINNER
B.Arch. — M.R.A.I.C.
17A Mill Street, Suite 2, Acton
Telephone 853-2740
or
20 Stavebank Rd., Port Credit
274-3428
Office Hours by Appointment



ELEGANT NEW LUXURY MODEL
4-DOOR HARDTOP FOR 1965...
FORD GALAXIE 500 LTD



EXCITING NEW FAIRLANE
500 SPORTS COUPE



LIVELY NEW FALCON FUTURA 2-DOOR HARDTOP

Certain features illustrated or mentioned are optional at extra cost.

For 1965... the many Worlds of FORD.

'65 FORD
New World of Elegance

You'll find it the most delightfully new Ford in years. New ride, on coil springs all around. New silence, in a beautifully appointed interior. Outside and in, the 1965 Ford offers hundreds of innovations for your comfort and convenience. For power, there's a new "Big Six" and four great V-8's that offer more performance and economy. Test Drive the silent comfort of the '65 Ford.

'65 FAIRLANE
New World of Value

Here is the thrifty family car that offers sports car fun. Fairlane has a clean, crisp look, the luxury and finish of a big car interior and the smooth pleasure of a big car ride. And it offers all this at Fairlane's low initial price with proven operating economy. Choose your power from the smooth new Six or three powerful V-8's. Test Drive this New World of Value soon.

'65 FALCON
New World of Economy

This is the proven performer of the compacts. This year Falcon offers important engineering refinements and smart new styling. New engines and transmissions give more power and acceleration, from the gas miserly Six to a host of hot new V-8's. Put one with a three-speed or four-speed manual shift or three-speed Cruise-O-Matic for the smoothest driving ever. Test drive the lively new Falcon for '65.

Test Drive a New World of Total Performance

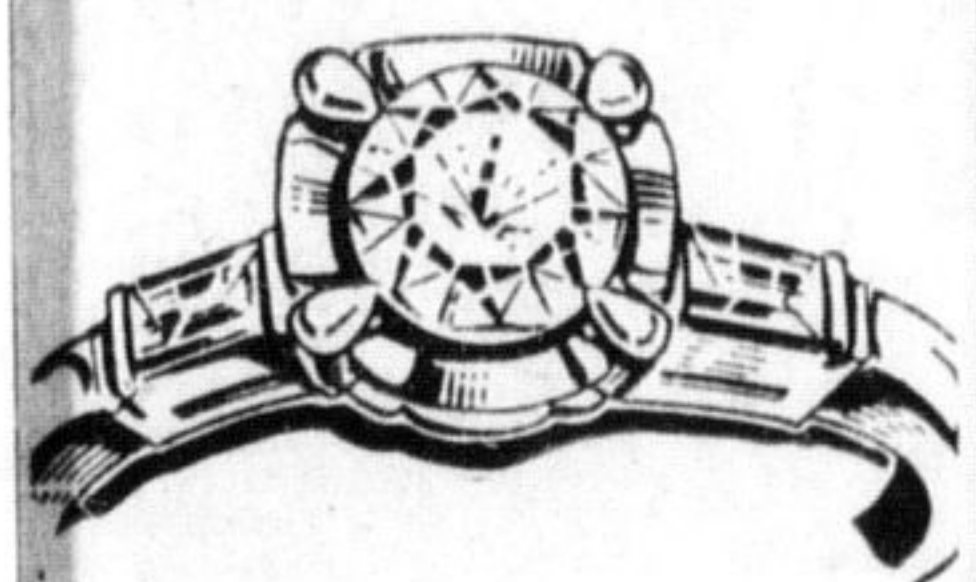
MUSTANG • FALCON • FAIRLANE • FORD • THUNDERBIRD



TRAFALGAR MOTORS CO. LTD.

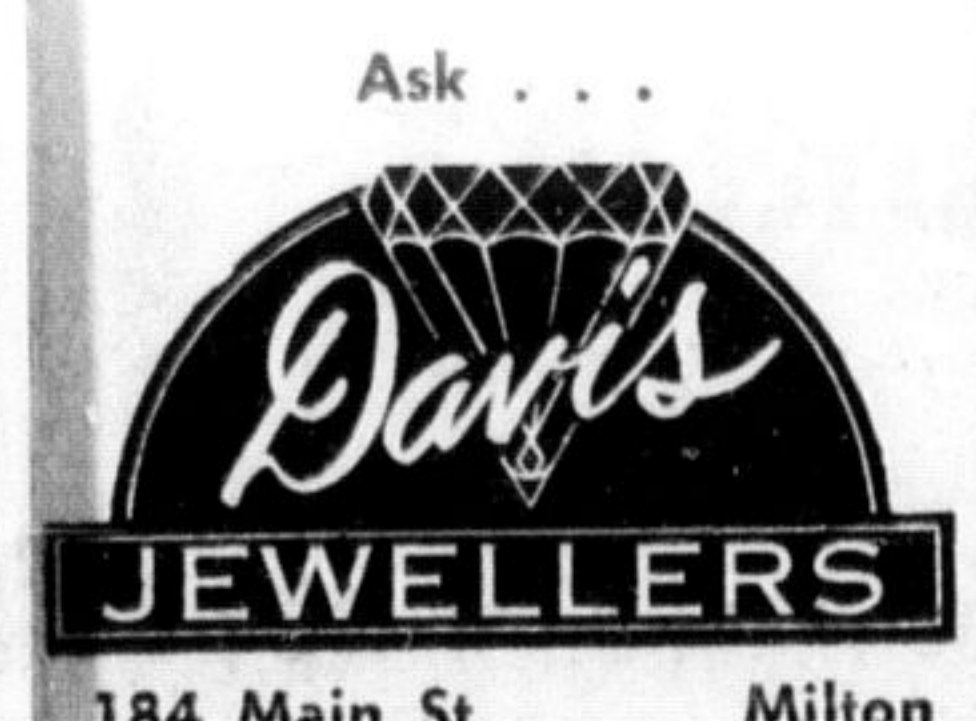
409 Main St., Milton, 878-2369

RING MOUNTING



NEW DIAMOND GLAMOUR IN SMART NEW SETTINGS!

Diamonds are forever... don't risk losing yours, or detract from their beauty with old, worn out settings. Browse through our selection of new, exciting mountings... we'll estimate the cost... free!



184 Main St. Milton