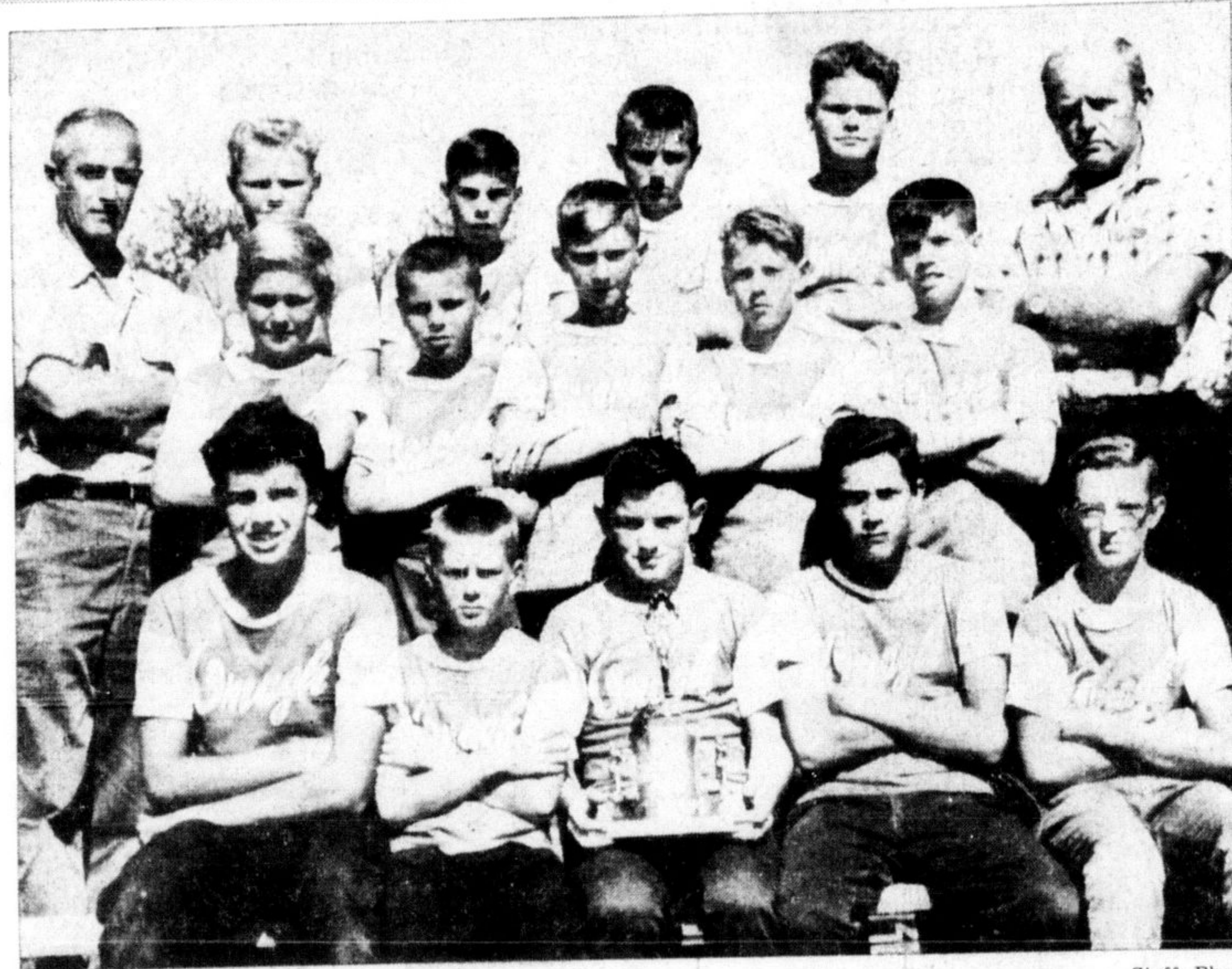




—Staff Photo

MILTON TYKE ALL-STARS were eliminated last week by Chippawa. The squad, coached by Murray Whistler and managed by Don South, played in the three team Halton County league during the regular season. Shown in the picture with Mr. South and Mr. Whistler are John Sampson, John Arnold, Roger Rowley, Rick McTrach, Robert Lawrence, Billy Clarke, Wade Bekar, Hugh Marshall, Marc Shase, Bill Clarridge, Hughie Campbell and Brad Evans.



—Staff Photo

PEE WEE CHAMPIONS in the Halton Rural Minor Softball league in its first season of activity was the Omagh entry shown here. They captured the trophy donated by Lyle Dales Farm Equipment. In the back from the left are Bob Bonhon, Gene Holdridge, Keith Leriche, Randy Bonhon. In the centre row are Coach Mel Dolby, Brian Taylor, Jim Sherin, Wayne Lawrence, Jim Beck, Andrew Ruhl and manager Charles LeRiche. In front are Bob Laurie, Hugh Beck, John Perry, Steve Dolby and Charles Lawrence. Absent were John Johnson and Neil Hoover.



—Staff Photo

SQUIRT CHAMPIONS in the Halton Rural Minor Softball League were the Omagh Squirts. The team is shown receiving the trophy donated by Len Buckler of Drumquin Service Station from Mr. Buckler. Maurice Curtis is doing the receiving. Other members of the team in the back row from the left are Hank DeBoer, John Patterson, Geoffrey Babb, Danny Willmott. In the centre row are Manager Roy Ellis, Murray Lawrence, Eddie Ford, Bob Sargent, Joey Willmott, and Coach Ted Slover. In the front row are Sonny Hagyard, Paul Slover, Wayne Ellis, Gordon Perry and Randy Babb. Absent were Billy Clarke and Billy Lendvoy. Don Few also contributed coaching assistance to the team.



BE "ON THE SPOT" FOR THESE MEAT VALUES

COMPARE AT 39c! — LIBBY'S FANCY 48-oz. TINS
TOMATO JUICE 3 FOR 97c

COMPARE AT 97c! — 6c OFF PACK 1-lb. BAG
CHASE & SANBORN COFFEE 79c

COMPARE AT 87c! Pkg. of 60
SALADA TEA BAGS 77c

COMPARE AT 39c! 8-oz. PKG.
KRAFT CANADIAN CHEESE SLICES 29c

COMPARE AT 63c! 1/2's TIN
GOLD SEAL FANCY SOCKEYE SALMON 55c

COMPARE AT 2 FOR 39c! — WITH PORK 20-oz. TINS
YORK BEANS 6 FOR 99c

COMPARE AT 2 FOR 41c! — FANCY HONEY POD 15-oz. TINS
STOKELY PEAS 3 FOR 49c

COMPARE AT 55c! — LIBBY'S 48-oz. TINS
SUNNIVALE ORANGE JUICE 49c

Compare at \$1.68! — BEST BUY — 60 and 150 Watt
G. E. LIGHT BULBS 6 FOR \$1.19

COMPARE AT 37c - 43c - 45c — CHERRY — PEACH — APPLE 20-oz. TINS
E. D. SMITH'S PIE FILLER 3 FOR \$1

SUPREME — FANCY ASSORTED 5 VARIETIES
BISCUITS 3 FOR \$1

COMPARE AT 51c! 12's
CONFIDETS 39c

SPECIALLY SELECTED — VALUE CHECKED — BRANDED
BLADE ROASTS lb. 53c

LEAN — MEATY — SPECIALLY SELECTED
SHORT RIB ROASTS 53c

FOR MEAT PIES OR STEWS — LEAN BONELESS — CUBE STYLE
STEWING BEEF 59c

MILD CURED — WELL STREAKED — SCHNEIDER'S
Rindless Bacon 1/2 lb. 39c

FRESH SLICED — SCHNEIDER'S
Cooked Ham 6-oz. Vac Pac 49c

LIMIT 2 BAGS PER CUSTOMER
GRANULATED SUGAR 5 LBS 49c

Compare at 2 for 25c! — CLARK'S 10-oz. Tin
TOMATO SOUP 9c

Compare at 73c 32-oz. Jug
OLD TYME SYRUP 69c

NEW CROP, ROSY RED 6-qt. BASKET
MAC APPLES 79c

COOKING ONIONS 39c
 10-lb. MESH BAG

INSURANCE

R. R. FORD
 Milton, Ont. TR 8-6357

Announcing the Grand Opening
ACTON PRE-CAST CONCRETE AND SUPPLIES
 SPECIALIZING IN SEPTIC TANKS
 PHONE 853-1529 ACTON
 SEE US AT THE
Acton Fall Fair -- September 19th

LEDWITH'S