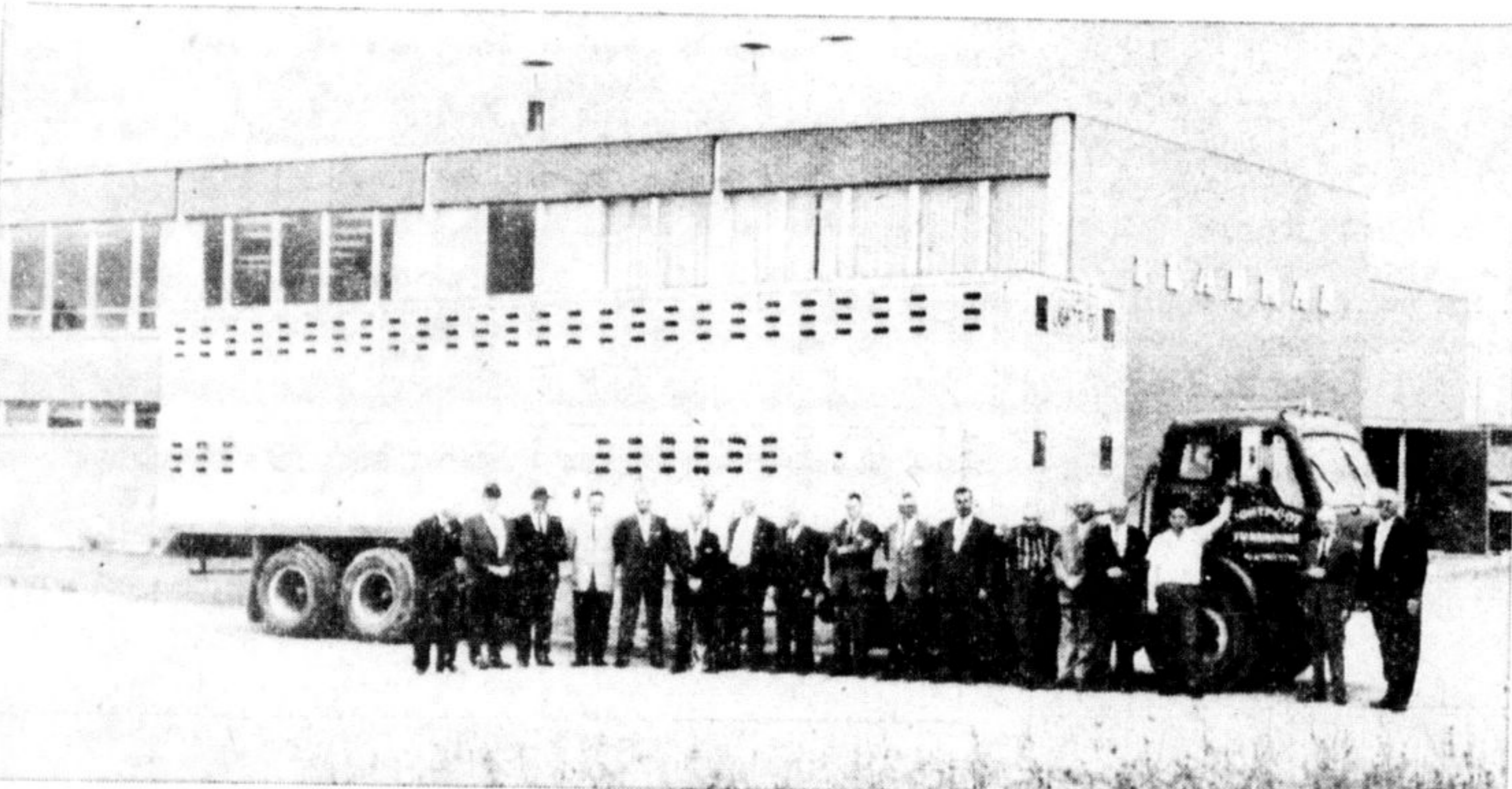




OFFICIALS OF F.A.M.E. (Farmers' Allied Meat Enterprises Co-Operative Limited) are shown signing the papers to take over the ownership of their first producer-owned meat processing plant, the former F. W. Fearman Co. Ltd. of Burlington, on Monday. From left are C. W. McInnis, President of F.A.M.E. and chairman of the board to operate Fearman's; Ernest R. Gunner, president of Fearman's prior to the sale; and Mrs. Mina Shillabeer, Secretary of F.A.M.E. The signing took place at the company's plant on the Appleby Line south of the Queen Elizabeth Way, Monday.



The FIRST SHIPMENT of F.A.M.E.-owned livestock entered the Co-Operative's newly-purchased Burlington plant (formerly Fearman's) on Monday, not long after the contract was signed giving F.A.M.E. ownership of the 130,000 square foot, two-storey processing plant. The directors of F.A.M.E., including Halton County representative A. R. Service of Milton, gathered at the plant to watch the load being delivered from Middlesex County farmer Archie Carmichael, Newbury. Other directors in the photo are Raymond Anderson, Merlyn Baker, Morley Mills, Dougal Carmichael, Ray Webster, Alec Anderson, Honore Bordeau, Wilfred Bishop, Lorne Wettlaufer, Harold Smidt, Alva Rintoul, Clayton Frey, A. R. Service, Ormond Pridham, Jack McGillivray, Leonard Laventure and Carl Hemingway, plus driver Don Lightfoot of Alvinston.

F.A.M.E. Buys Fearman's at Burlington Now Farmer-Owned Producing Plant

The sale of a large Burlington meat producing plant to F.A.M.E. — Farmer's Allied Meat Enterprises Co-Operative Limited — was announced this week. Directors of F.A.M.E. announced they had purchased all the shares of the F. W. Fearman Co. Ltd. on Friday, and took over possession of the 130,000 square foot plant and office Monday at 11 a.m.

No purchase price was stated in the announcement, made through J. Carl Hemingway of the Public Relations Committee. It was learned the Fearman plant had been constructed and opened in 1962 at a cost of \$2,000,000.

Opportunity for Halton
A. R. Service of Milton, one of the 18 county directors (representing Halton) on the F.A.M.E. Board of Directors, hailed the announcement as a great opportunity for Halton farmers. "We are sending Halton on the F.A.M.E. very fortunate that F.A.M.E. has purchased a slaughtering and processing plant right here in our county, within easy shipping distance of some of the best beef and pork in Ontario," he said.

C. W. McInnis, president of F.A.M.E. was elected Monday as chairman of the Board of the co-operative's Fearman plant, and made the official announcement. "We begin operations of the plant as a totally subsidiary of the F.A.M.E. Co-Operative without interruption in production," he stated. "The Fearman trade mark will be used on the line of products previously processed here in our newly-acquired plant, and we will soon introduce new food products under the F.A.M.E. label."

Cut Out Middle Man
Fame was organized five years ago, when beef and hog producers banded together to acquire better control over the sales, prices and production of their farm products. Shares were sold throughout the province to farmers who were dissatisfied with the present marketing systems, and plans were laid to build several slaughtering houses across the Province as feeder units for a large central packing plant to be constructed at Avy, Ont.

Before construction on the Avy plant was started, the directors learned the Fearman plant was for sale, and jumped on the opportunity to purchase a long established, reputable meat packing plant of this size. "The Fearman plant is closely similar in capacity to original plan for the central plant proposed for the Avy site," Mr. McInnis pointed out. "It is equipped to do complete processing of all meats and by-products, with ample space available for processing the product from three slaughtering plants in the district." The Burlington plant is situated on a 70-

acre site and is designed to accommodate future extensions.

Ahead With Others
The President emphasized that this does not mean any change in the already-established F.A.M.E. program. "Additional slaughtering and processing plants will be built, just as quickly as possible, so that an ever increasing number of livestock producers can enjoy the services of their own processing and slaughtering facilities," he concluded.

The Fearman building is designed to handle 6,000 hogs and 650 cattle a week. It is one of the most modern and intricately de-

signed processing plants in Ontario, and a fleet of 15 refrigerated trucks serves markets in Hamilton, Toronto and the Niagara Peninsula.

F. W. Fearman started his first packing plant in 1852 in Hamilton, and the firm continued in the family ownership until 1932. It was sold twice between then and 1950 when E. R. Gunner purchased the firm and became president. Mr. Gunner is owner of Letchworth Bacon Co. at Letchworth, England, and reports he offered to sell the Burlington plant in order to devote more time to his business in England.

It was in 1960 when Fearman's first began the move from Hamilton to Burlington. The slaughtering and abattoir facilities were constructed first, and the sausage and smoked meat processing facilities, as well as office and shipping complex, was completed in 1962.

The firm presently employs 200

in the plant, plus a small office staff. Fearman's present products are sold under the Fearman's, Mary Miles, Davern Farms and Canadian Queen labels. All products are processed under federal government inspection.

Moments after the sale and take-over were completed Monday, Middlesex farmer and F.A.M.E. shareholder Archie Carmichael of Newbury shipped in the first load of F.A.M.E.-owned stock — 25 head of cattle. The Board of Directors assembled to witness the signing of the documents and watch the first F.A.M.E. shipment being unloaded for slaughtering and processing.

Union Safety Committee Asks for Safe Holiday

At 6 p.m. Friday, September 4, streets and highways will start to fill as nearly every automobile in the nation takes the road.

"Traffic will be much heavier than normal during the 78 hours of the Labor Day weekend," according to G. G. Heym, president of Local 366, of the United Cement, Lime and Gypsum Workers International Union. And he added: "Getting out of doors — picnics, fishing, boating, swimming, are the favorite ways to spend the Labor Day weekend. But these outings should not be marred by tragedy, and Local 366 is taking part in the Labor Day Safety Campaign sponsored by the AFL-CIO standing Committee on Safety and Occupational Health, the United Mine Workers of America and the Labor Conference of the National Safety Council."

- ★ Swim and boat only with companions — never alone.
- ★ Check with local Harbour Patrol, before operating a power boat of any size.
- ★ If the boat overturns or swamps, stay with it. Wait for help or push and paddle it to ward shore.

Reckless Driving Gets Police Warning

Milton Police this week warned they would be issuing summonses to drivers responsible for what they call "wild, reckless driving" during wedding processions in town.

Following several weddings in the past four months, police have been called to stop "unruly" wedding car processions through the streets and to put an end to senseless blaring of horns. "We don't mind a few honks on the horn, but drivers should show some respect for other people's privacy," said one police officer. "Wedding or not, drivers still have to obey the laws. A marriage licence doesn't give anyone the privilege of racing about town and breaking the laws. Police suggest that future wedding parties should observe the rules to avoid charges against the operators of noisy or carelessly driven cars.

- ★ Give yourself plenty of time for the journey — with extra time for frequent rest stops.
- ★ Don't drive if you become overtired.
- ★ Keep alert for poor drivers in order to protect yourself and your family from another's mistake or recklessness.
- ★ Supervise children playing in or near the water.



NOTICE! RE WATERING RESTRICTIONS

By virtue of a motion passed by the Council of the Corporation of the Town of Milton on Monday, August 31, 1964, lawn and garden and hose use watering restrictions in the Town of Milton are hereby

**REMOVED as of
TUESDAY, SEPTEMBER 1st, 1964**

All consumers are requested to continue to guard against the waste of water, so that an adequate reserve supply can be maintained for emergency and firefighting purposes.

Your co-operation in conserving water will be appreciated.

S. G. CHILDS,
Mayor,
Town of Milton.



PLANT SUPERINTENDENT Chris Mikkelson of Clarkson (in helmet at right) and Halton's F.A.M.E. director Archie Service of Milton watch as packer Beverly Bigelow prepares to box an assortment of Fearman's products at the Appleby Line, Burlington plant. The firm, purchased this week by F.A.M.E., is 112 year old and as well as slaughtering cattle and hogs, produces a large line of packaged meat products for both local and export markets.

Crowe
TRUCK RENTAL
Moving Day Ahead?
See Us for Reasonable Rates
DIAL
878-9237

ATTENTION FARMERS

For milking cows on pasture follow the 'MASTER SUMMER FEEDING PROGRAM'. Cows milking at a high level on pasture require a high energy, low fibre ration. We recommend MASTER 16% DAIRY RATION or MASTER 16% MILK PRODUCER RATION to overcome the problem of a mid-summer slump.

These feeds are available in Mash, Krum and Pellet form, and if you have an empty grain or bulk feed bin, we can deliver bulk feed in two ton lots or more, saving you money.

FERTILIZER

We are agents for C-I-L and AGRICO BRANDS of Farm Fertilizer. We have good stocks on hand for Fall Wheat, Hay and Pasture applications. Call us for your full requirements and we can also take your soil samples for analysis.

CALL US TODAY

We also have a fertilizer available for the broadcasting of fertilizer

SEED WHEAT
WE HAVE A GOOD SUPPLY OF SEED WHEAT ON HAND FOR FALL PLANTING.

Call us for prices before you buy.

SEED CLEANING

We are now cleaning wheat for fall planting. If you have Wheat for cleaning and treating, CALL US FOR A SEED CLEANING APPOINTMENT.

We stock a full line of MLM

MASTER FEEDS

FEED MASTER FOR RESULTS THAT COUNT!

MASTER FEEDS
(STEWARTTOWN)
Dial 877-3512 — Georgetown



"... In A Merry Oldsmobile ..."

YES GRANDMA AND GRANDPA SANG THE PRAISES OF THE MERRY OLDSMOBILE YEARS AGO AND TODAY OUR VOCAL CHORDS MAY NOT BE SO GOOD BUT WE'RE STILL SINGING THE PRAISES OF "THE MERRY OLDSMOBILE" PLUS THE CHEVROLET, CHEVELLE, CHEVY II, CORVAIR AND ENVOY.

You'll sing the praises too so why not drop in for a good old fashioned deal this week. And by the way have fun during Old Fashioned Days and at Steam-Era this weekend. All roads lead to Milton.

REED-REDFERN
LTD.
ONTARIO ST. MILTON TR 8-2393

Champion Ads Get Results

VISIT WATERDOWN . . .
**FRIDAY EVENING
SEPTEMBER 4**
MEMORIAL PARK -- 6.30 P.M.

TWILIGHT MARKET
At the height of the season for fruit, vegetables, flowers, home baking, etc.

FLAMBORO-WATERDOWN FAIR
Ontario's finest Class B Fair, noted for its fine exhibits, childrens events, midget car races, square dancing.

SATURDAY, SEPTEMBER 5, 1 P.M.
Features Dairy and Beef Cattle Show, junior horse show, Baby show, evening western horse show.

EXHIBITS ON DISPLAY TILL 9 P.M. SAT. ADMISSION 50c
FREE PARKING