

**THE WEEKEND PARKING SITUATION** is explained in this map, drawn by Brian Best of the Chamber of Commerce, for the benefit of residents and visitors who will visit the "Steam-Era" show at the fair grounds. Note that all traffic into town from Highway 25 on the north, will be routed to the fair grounds area via the Base Line Rd., Bronte St. and Heslop Rd. Incoming traffic from the south enters via 10 Sideroad, Bronte St. and Heslop Rd. The outgoing cars leave town via the Heslop, Commercial, Pine and Ontario Sts. route. **PARKING AREAS:** 1—Fair Grounds; 2—Denves School grounds; 3—Williams Ave. High School; and 4—Empty field at the Bronte-Heslop Rd. corner. Note locations of the restrooms, police and fire station, and hospital as indicated on the map. **WARNING:** No parking will be permitted on Saturday and Monday on Thomas, Robert, Sarah, Commercial, Heslop and Pine Sts.

**Friends Honor Couple On 25th Anniversary**

The family of Mr. and Mrs. Stafford Curtis entertained at their home in honor of their parents celebrating their 25th anniversary on August 30. Friends came from Milton, Puslinch, Port Credit, Hamilton, Grassie, Oakville, Huttonville, Waterdown, Toronto and Bronte.

Their daughters and daughter-in-law were assisted by Miss Marg Peacock of Milton and Miss Elaine Mitchell of Huttonville in serving refreshments to the guests.

—Students have just five days to wait before their big day, Back-to-School Day next Tuesday.

**No Aid for Hail Stricken Area Group to Study Hail Insurance**

Despite a seemingly generous offer from the Provincial and Federal governments, farmers in the district who suffered grave crop losses in the August 11 hail storm will probably have to bear their losses without assistance from any source. The Honorable William Stewart, Minister of Agriculture for the Province, told an eight man committee from the hail stricken area that there was no legislation to provide for assistance because of hail damage.

However, the Minister stated that he would recommend that the provincial government assist to the extent of any public subscription that might be taken up. It has also been stated the Federal Government would probably assist to the same extent. These facts were uncovered Friday evening at a meeting in the Agricultural Hall in Milton when the committee that met with the minister of agriculture reported to an open meeting.

**Campaign Impossible**  
Roy Coulter of Campbellville, a spokesman for the hail stricken farmers, told the Champion that it would be nearly impossible to get an effective subscription under way since a campaign would have to encompass the whole county and not include the stricken areas. Besides, it would be very difficult to spread the collected money to the stricken farmers, not overlooking anyone. A motion presented at the Friday evening meeting that the Halton Federation of Agriculture begin a collection campaign was turned down. During the meeting however, a motion was passed asking the

Halton Federation of Agriculture to look into hail insurance for crops and to present their findings at their annual meeting next year.

The August 11 storm which lasted for an hour was believed to be the most devastating to

hit the county in over 70 years. The hail stones were variously described as being as "big as golf balls", or "larger than eggs". The storm was believed to have started about the Cedar Springs Road in Burlington and to have ended about the Seventh Line, Oakville, after cutting a swath about one-half mile wide and about 12 miles long. Damage to over 100 farms in the district was estimated at over \$300,000.

The Northern Lights appear in the atmosphere at heights ranging from 50 to 500 miles high.

**PERSONALS**  
Friends of Charles Sharpe, Pearl St., will be pleased to know that he has returned home from Milton District Hospital. We wish him well.  
E. Foster Brain, Hornby, will attend the C.N.E. President's Luncheon on Farmers' and Livestock Day, Friday, September 4. Mr. Brain also received an invitation to attend the "Tea" in the Queen Elizabeth Building at 4 p.m.

**RALPH & HUNT Ltd. SUGGEST**

**Get Up to a Ton More Milk by Feeding Cows Properly During Dry and Freshening Periods**



Over 40 years of continuous Purina Dairy Research has proved again and again that the dry and freshening periods help decide how much milk the cow will give during her next lactation.

That's why Purina developed D & F Chow. This is a special ration that provides a well balanced diet cows need during drying and freshening.

Purina D & F Chow, fed properly, can keep the cow in good, vigorous condition during gestation and calving time... usually means a healthier calf, but, more

important, it can help your cow produce up to a ton more milk during her next lactation.

Don't you think it's time you considered Purina's Program for dairy cattle? It can give you up to a ton more milk per year per cow because it provides the exact rations necessary for every period in her life! Come in to our Store with the Checkerboard Sign and let us tell you more about what D & F Chow can do for your dairy profits.

For fast, efficient feed service call

**RALPH & HUNT LTD.**

R.R. 1, OAKVILLE

TR 8-6449

Canadians who want bigger profits tomorrow feed Purina Chows today!



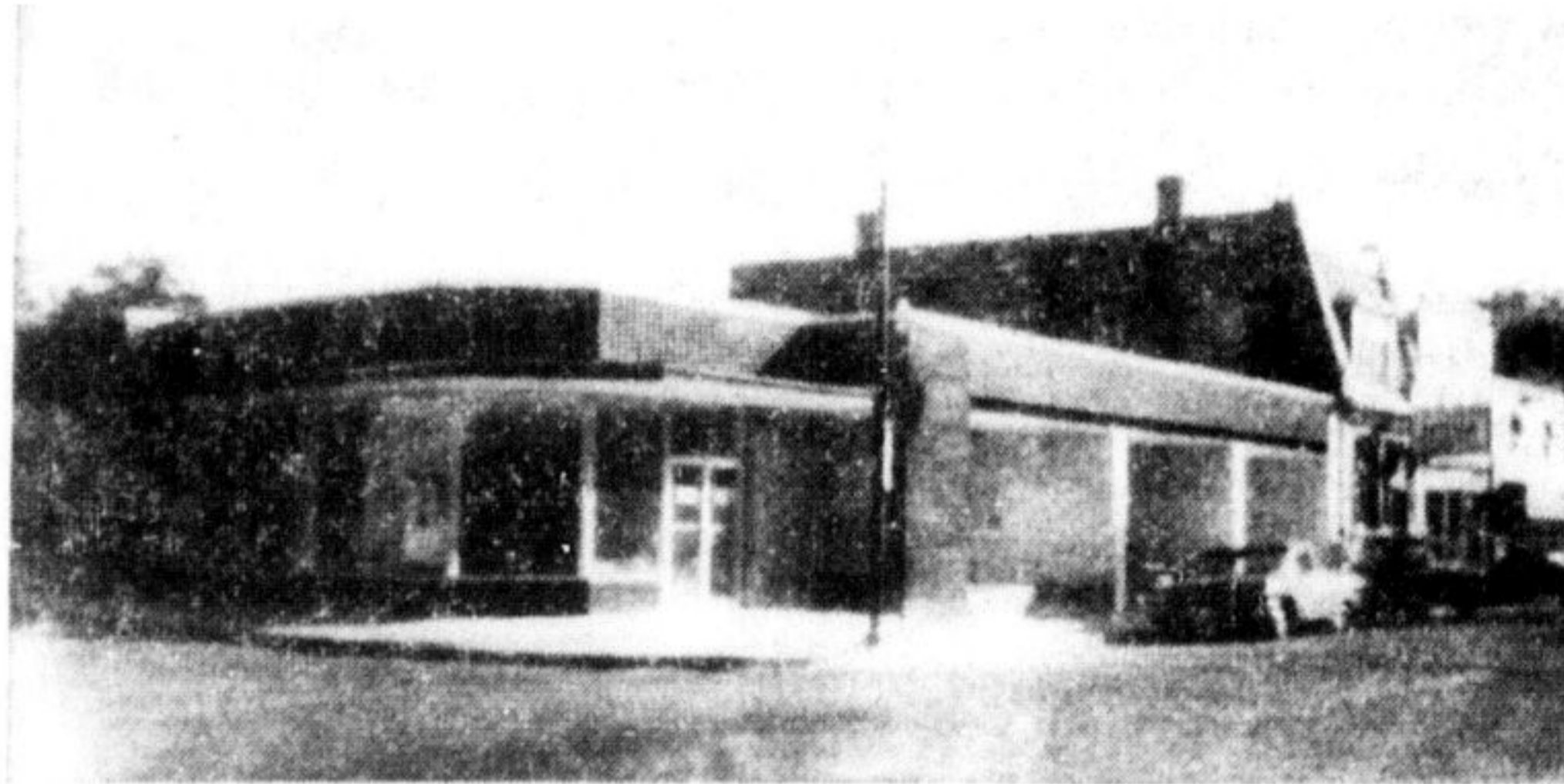
**You Get the Best from BEST**

**OLD FASHIONED BARGAIN WEEK**

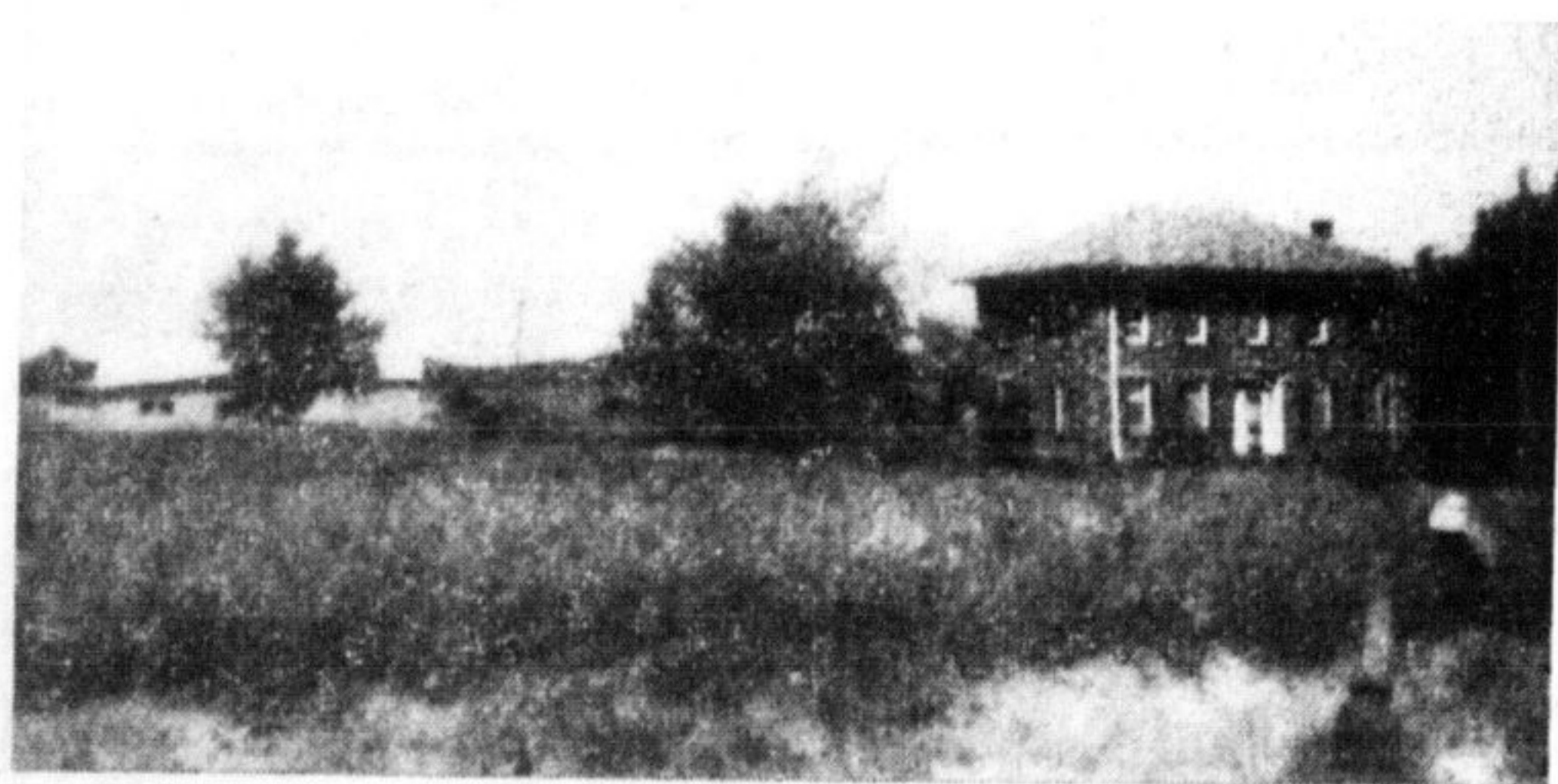
WITH 1964 PRICES

**WE WISH TO TAKE THIS OPPORTUNITY TO WELCOME ALL THE STEAM-ERA VISITORS TO MILTON**

**MILTON HAS A GREAT FUTURE -- WE SUGGEST THAT YOU CONSIDER "MILTON" AS THE LOCATION FOR YOUR HOME -- BUSINESS OR PLANT**



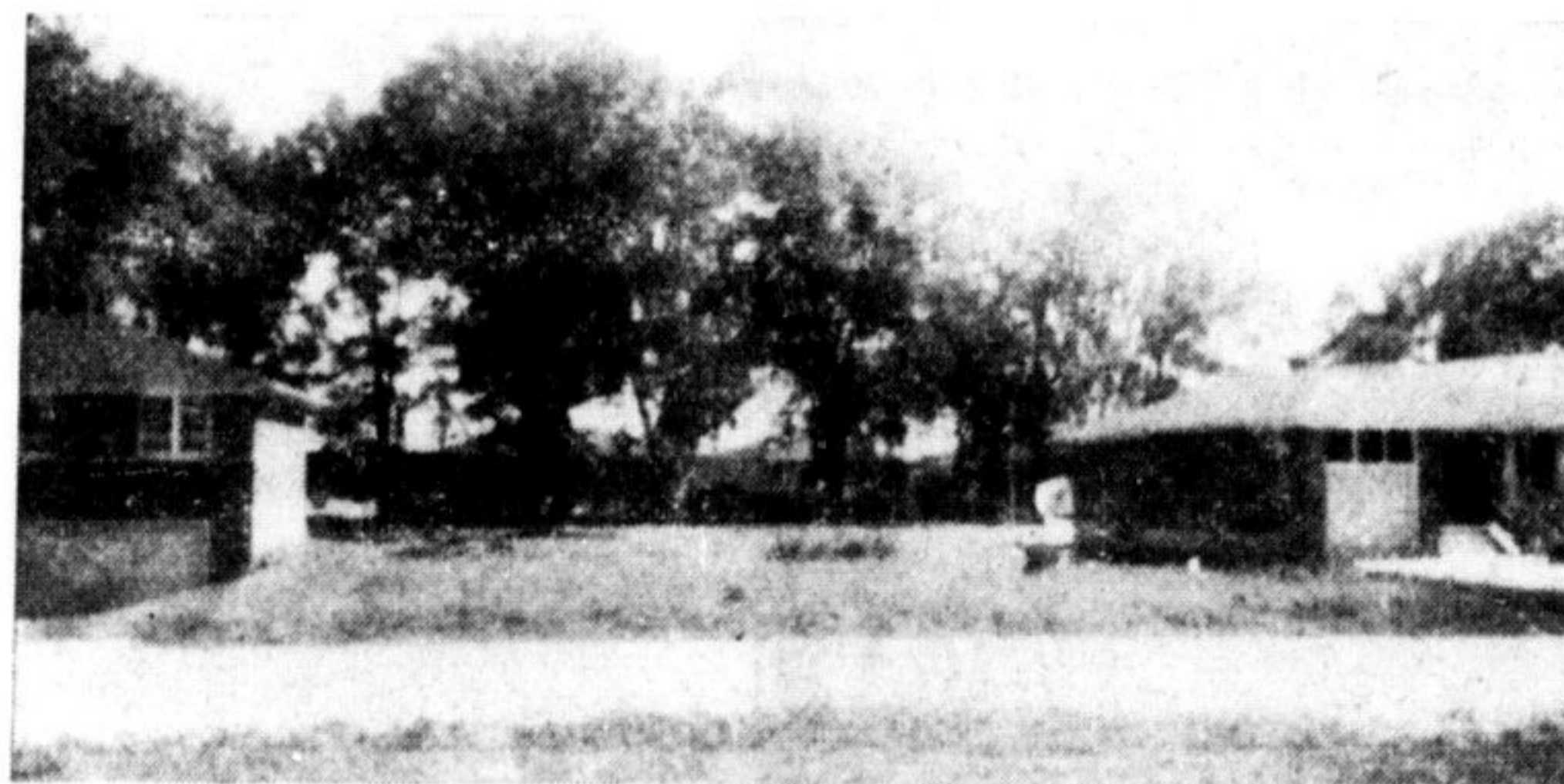
**FOR RENT** — Four modern stores centrally located on Milton's Main Street — available as of 1st October. Stores completely finished and decorated. Full basement, average main floor area 1,400 sq. ft. 20 foot frontages. Parking for 28 cars at the rear. Monthly rents from \$275.00. The corner store has been rented.



**PRICED TO SELL** — \$18,000.00 will buy this 6 acre corner property located 3 miles west of Milton. Including a 14 room brick house, a steel barn 60 ft. x 27 ft., plus a 3 car steel garage. The bargain being the annual taxes — \$160.00.00. This is a once a year type of listing — They are few and far between — Buy it now — Don't delay.

**WE CAN ALSO PROVIDE YOU WITH THE FOLLOWING INSURANCE COVERAGES**

- Automobile
- Fire
- Theft
- Liability
- Travel
- Accident
- Health
- Life
- Mortgage Protection
- Casualty
- Aircraft
- Marine
- Bonds



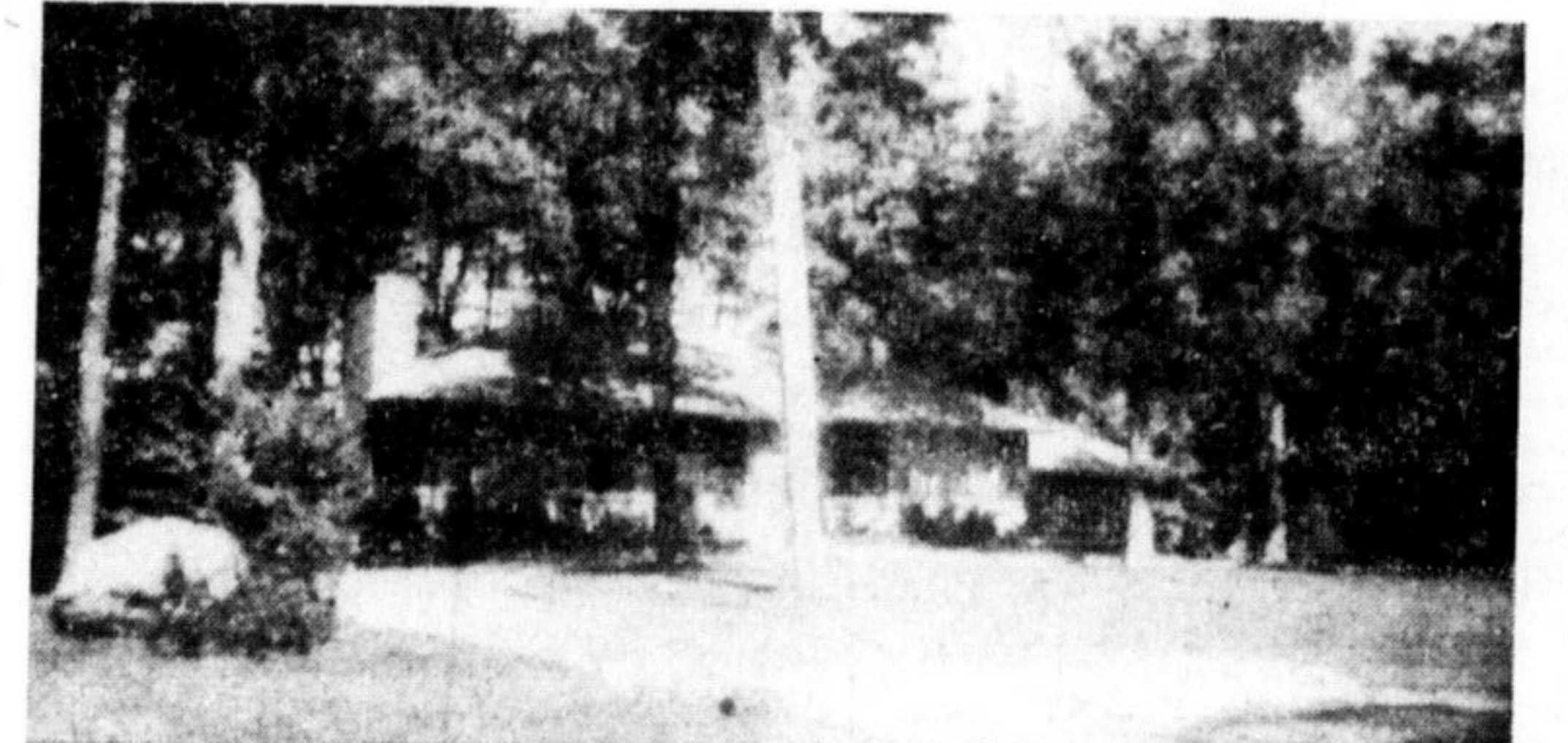
**RESIDENTIAL BUILDING LOT** located on Ashbrook Court — 60 foot front by 154 foot depth fully served with town water and sanitary sewer — paved road. Centrally located, Full price \$3,700.00 with terms. We have other lots available both in the town and surrounding district, 1/2 acre lots from \$2,000.00; 10 acre at \$3,500.00; 56 acre parcel, \$16,000.00.



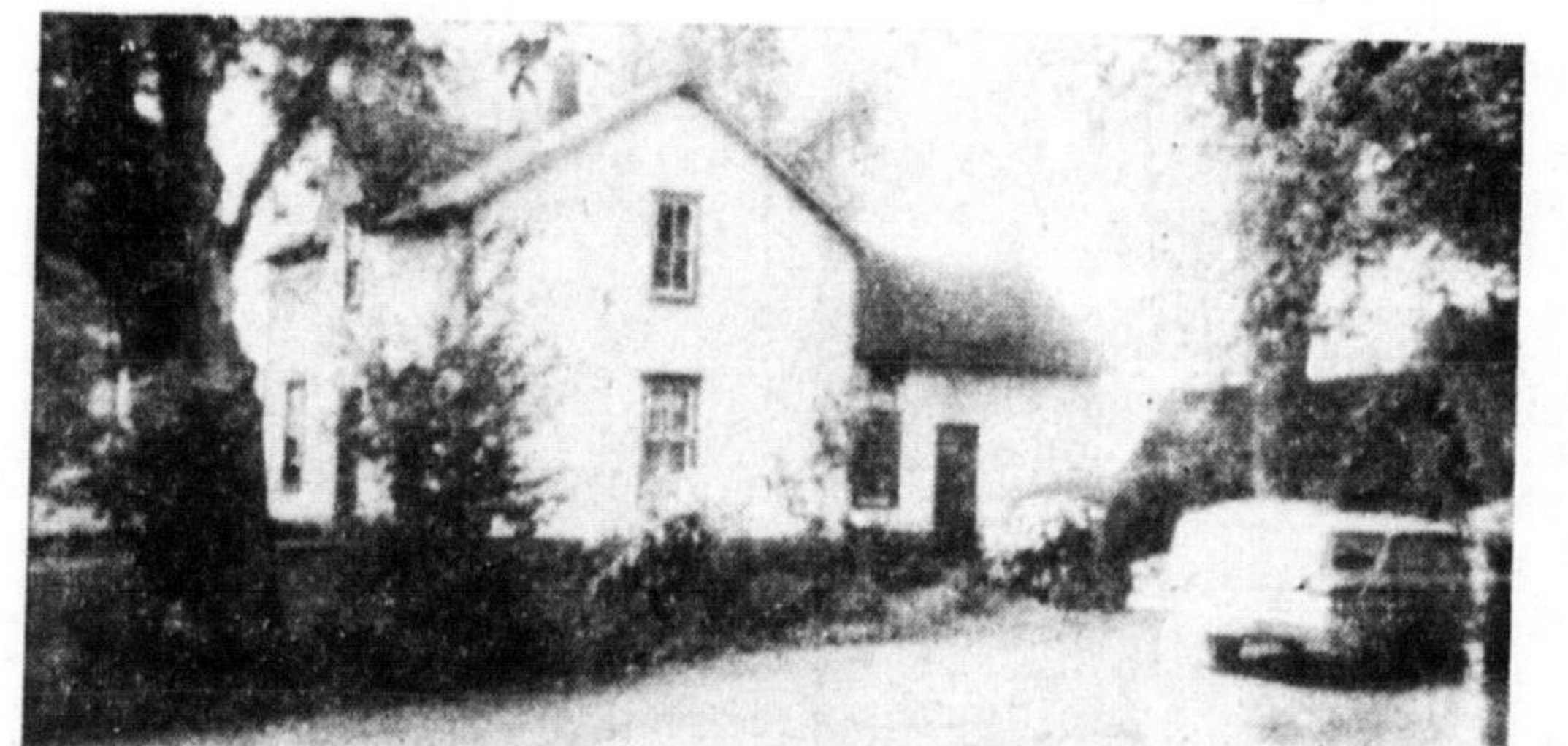
The owner of this modern 3-bedroom bungalow is being transferred. The list price of \$13,950.00 is \$550.00 below market value for a quick sale. This home has many extras — Completed Rec. room with bar — colored bathroom units — Mahogany trim throughout — paved driveway — 6% N.H.A. mortgage — Excellent terms.

**OUR COMPLETE SERVICE INCLUDES**

- Real Estate
- General and Life Insurance
- Mortgages
- Appraisals
- Rental Agents
- Property Management
- Property Development Proposals and Engineering Reports



**THIS BEAUTIFUL 3-BEDROOM BUNGALOW** is situated in Milton's only exclusive residential R. 1 area. This home is in first class condition and includes many extras — two fire places, broadloom — finished recreation room. Two car garage. Large landscaped lot. Asking price \$28,000 with terms.



**"NOW — THE REAL BARGAIN OF THE WEEK"** Yes Sir — You will be thinking, we have made a mistake — This 11 room frame house plus 1 acre of land is yours for only \$5,500 with \$1,000 down or \$4,850 cash. This is truly an "Old Fashioned Bargain".

**WHATEVER YOUR REQUIREMENT -- REAL ESTATE OR INSURANCE IF YOU ARE WISE YOU WILL CONSULT**

**BRIAN BEST REALTOR AND INSURANCE**

310 MAIN STREET, MILTON, ONTARIO

AGENTS FOR GEORGE WIMPEY LTD., BELL TELEPHONE COMPANY, C.N.R., MAPLE GLEN APARTMENTS, WOODTOWN (PLAZA INVESTMENT)

878-6292

878-6592