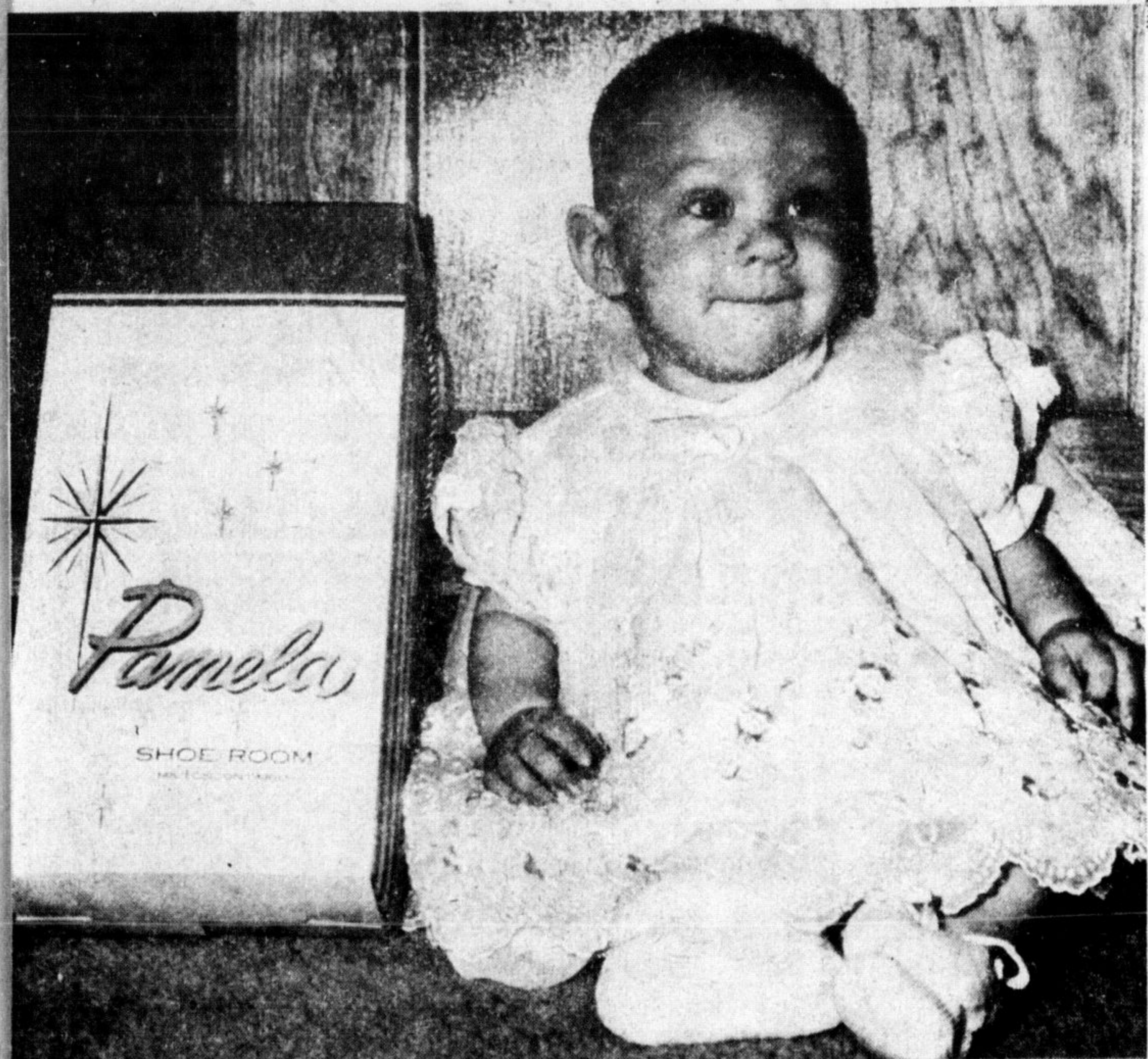
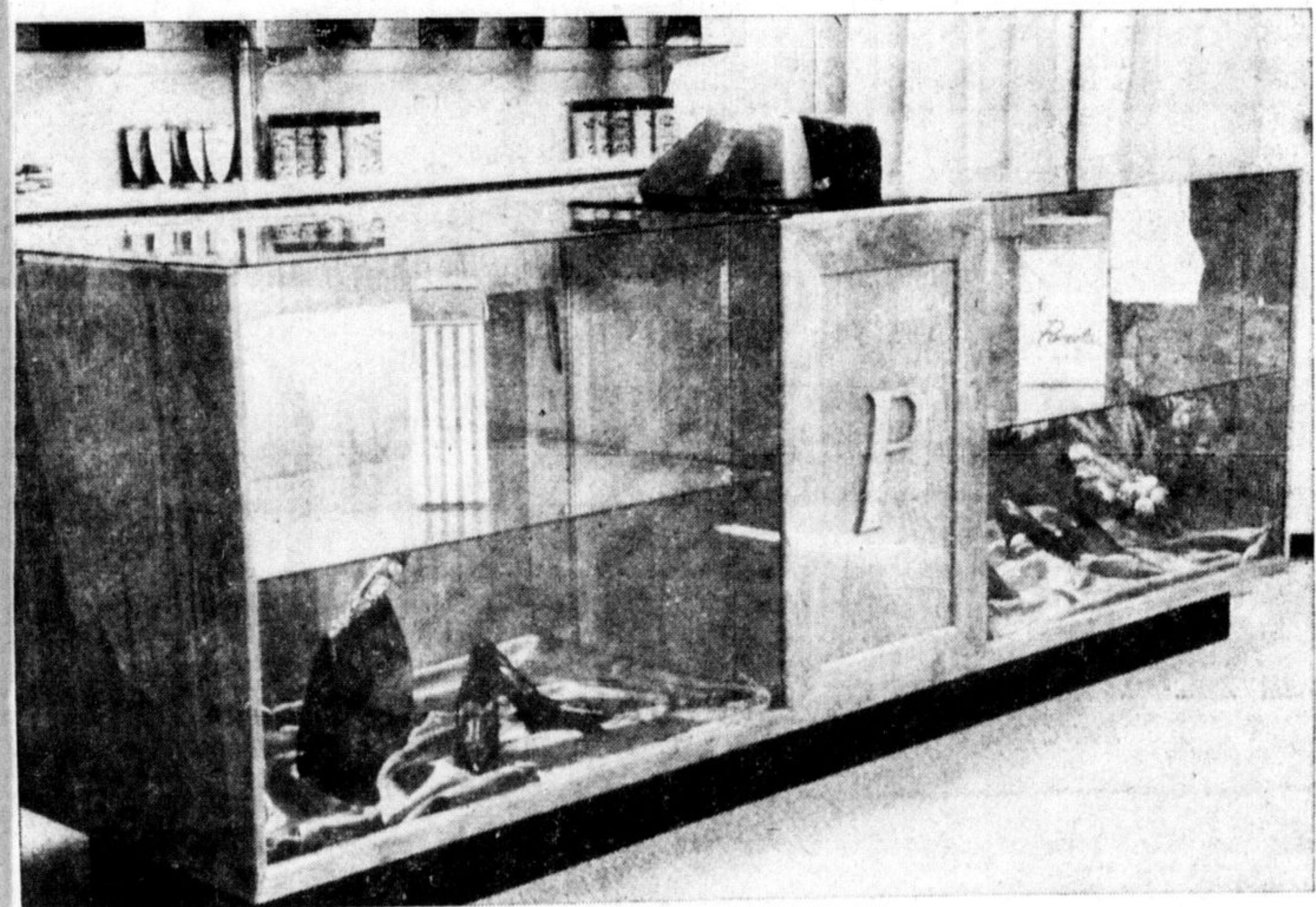


of Mr.  
2, Mil-  
High  
ul in  
n her  
Donna  
cent.  
n this  
ember  
eer.



## THIS IS PAMELA!

Our Five Month Old Daughter — For Whom the Store is Named!



## LADIES . . .

YOU'LL ENJOY SHOPPING IN OUR LOVELY NEW HIGH FASHION SHOE ROOM IN AN ATMOSPHERE OF PLEASANT, FRIENDLY, PERSONAL SERVICE . . . SUBDUED PIPED IN MUSIC . . . WALL TO WALL CARPETING . . . HAND CARVED COUNTER . . . WATER FOUNTAIN, ETC.

**DO COME IN AND SEE US!**



# GRAND OPENING

Milton's Newest — Most Modern — Finest

## LADIES' SHOE STORE

# PAMELA

# SHOE ROOM

ACROSS THE STREET FROM CREST HARDWARE

133 Main Street East, Milton

Mr. and Mrs. Ted Foster and Pamela

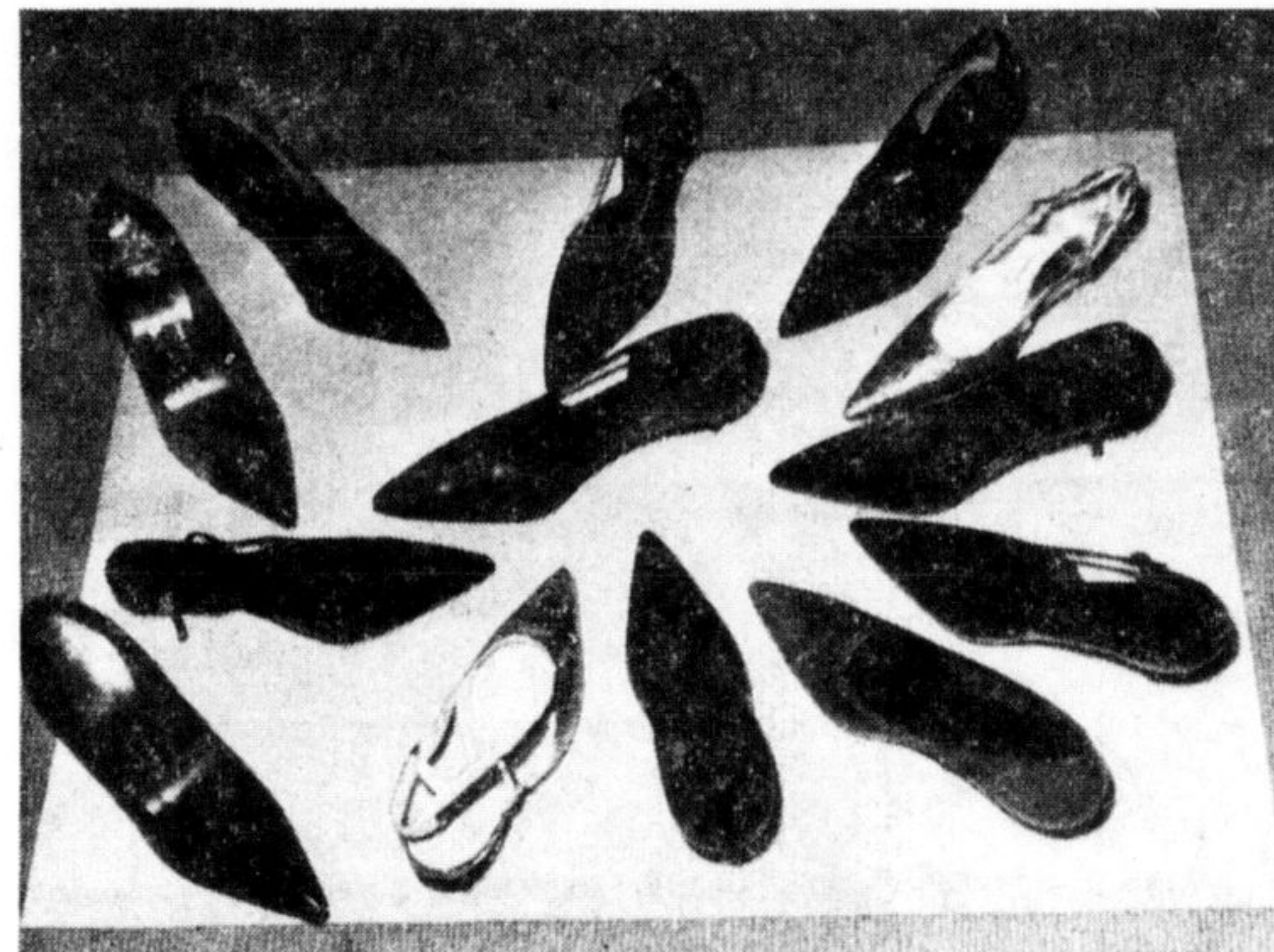
Phone 878-3461

— YOU'RE INVITED TO DROP IN —  
**FRIDAY, AUGUST 21st — 9 a.m.**

## FEATURING LADIES' HIGH FASHION SHOES

BY THE FOLLOWING MANUFACTURERS

- ★ "MIRELLE"
- ★ "ST. GEORGE"
- ★ "TETRAULT"
- ★ "LUCERNE"
- ★ "WOOLLEY'S"
- ★ "GILBERT"
- ★ "JOHN FRANCIS"



- ★ "NORWOOD"
  - ★ "HANDBAGS"
- By BELGIAN LEATHER

**FREE  
TINTING**  
ON ALL SATIN  
AND BROCADE  
SHOES

## ● FREE ROSES

FOR  
THE LADIES!



**FRIDAY ONLY**

## ● Free Nylons

A FREE PAIR OF  
LOVELY NYLONS  
GIVEN WITH PURCHASE

WE WISH TO EXPRESS OUR APPRECIATION TO

- NADALIN ELECTRIC  
For friendly extra service to enable us to open on time
- TED HECTOR  
For the Lovely Hand Carved Counter



MR. AND MRS. TED FOSTER