

Growth of a Utility

Hydro Observes Half Century of Service

By C. B. W. MacIntosh
Public Relations Officer Ontario
Hydro Central region

Half a century of service to the residents of Milton, the picturesque county town of Halton, is observed this year by Milton Hydro Electric Commission.

It is noteworthy that many Milton residents were aware of the need for an adequate supply of electrical power as far back as 1909. They had become conscious of the advantages that municipalities with ample electricity in the surrounding area were enjoying. Consequently the first overtures to Ontario Hydro from Milton requesting estimates on the cost of supplying electrical energy came in that year.

Generating Plant

But it was not until 1913, after considerable discussion and negotiating, that hydro power was brought into Milton from Niagara. Prior to that a limited supply of electric power was obtained from a small municipal steam electric generating plant. However, communities in the nearby district with hydro power by then were forging ahead, and this promoted Milton Citizens to take positive action to get sufficient power.

When the first electric power from Ontario Hydro became available, after rebuilding of local distribution lines, new street lighting, new lines to industrial customers and the construction of transformer stations, the municipal council dealt with the electric powers affairs at first, but the council prepared a bylaw to be voted on at the December municipal elections to create a municipal Hydro Commission. The first Milton Hydro Commission took office early in 1914.

At the initial meeting, Dr. R. K. Anderson was elected Chairman and the other Commissioners were Vice-Chairman W. B. Clements and Mayor Dr. H. McCall.

The advent of sufficient low-cost electrical power to take care of the demand has helped to give impetus to the steady growth and development in Milton.

The county town has not mushroomed in spectacular fashion like some nearby communities because of a water supply situation. Milton has been getting its water from deep wells in north Burlington, the supply amounting to about 1½ million gallons a day from that source. But the situation is expected to be completely remedied later this year with the addition of a new source of water from near the Kelso water development dam, an 80 acre lake just three miles west of town. This source will supply a minimum of one million gallons a day up to a maximum of three million gallons of water a day, and Milton council members are confident that the county seat then will start to boom.

Accelerated Growth

Indeed, the trend towards accelerated growth now is indicated. Several new housing subdivisions are expected to open

up, many of these with all-electric dwellings. Already the first all-electric 30 suite apartment building is under construction in Milton. The county seat is the centre for the Ontario School for Deaf Children and this also is soon to be expanded. The Centennial Manor, county home for senior citizens, is to double in size soon. There are prospects of several new industries locating in Milton in addition to the 12 already established in the community.

Milton Hydro has steadily been improving its distribution system to provide better service to customers, and the town street lighting is modern and up-to-date. Recently the Milton Hydro Commission building had a face-lift-

ing and the interior of the business headquarters was completely renovated.

Old Boiler

The office is all-electrically heated. Part of the heating in the two storey building is taken care of by a renovated electric water heater of the boiler type that had been installed in 1938, and later was abandoned because of the critical power shortage of World War Two. The electric boiler last year was put back in service and new immersion type heaters were installed. This heating is further supplemented by electric baseboard convection heaters in various sections of the renovated office.

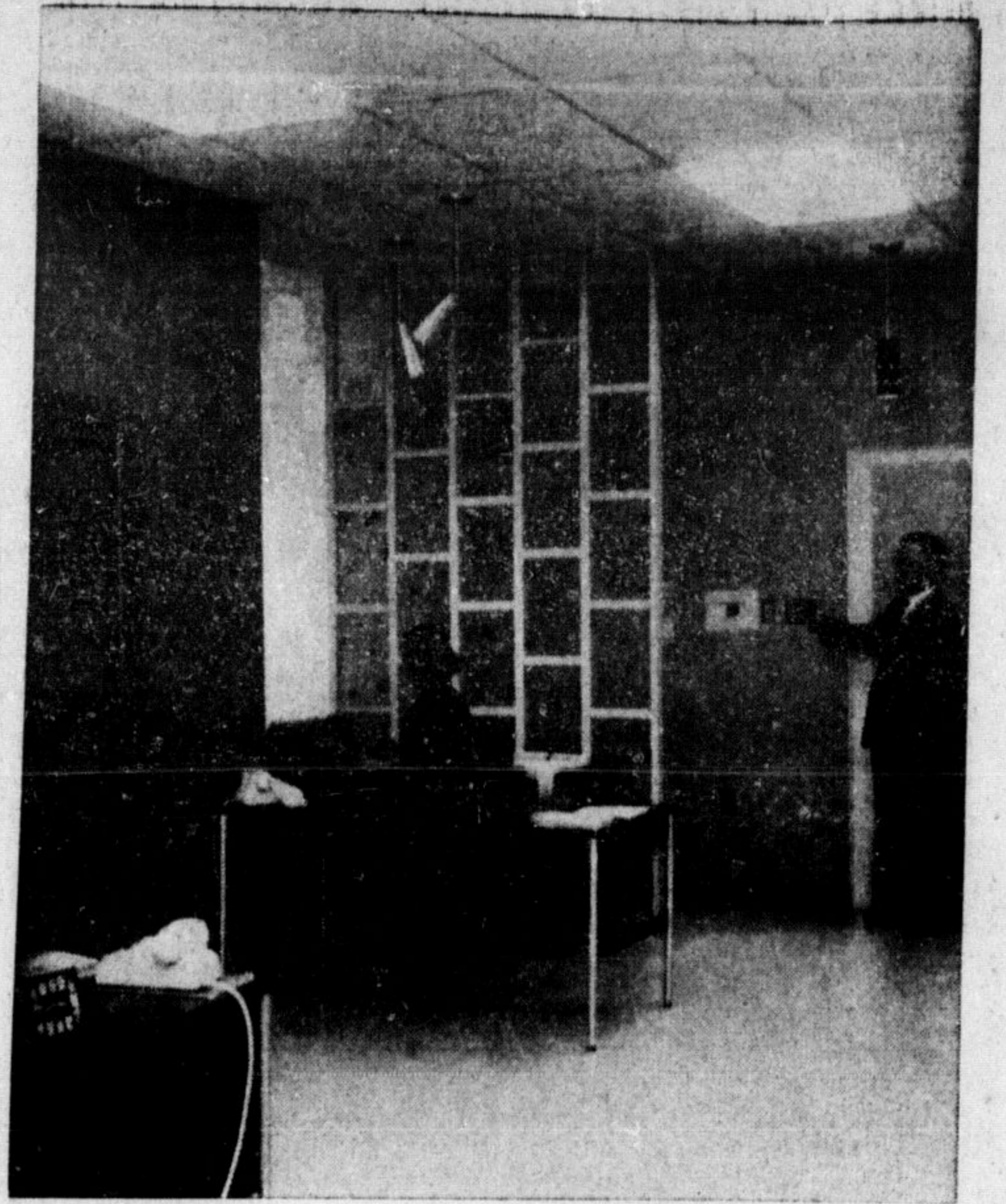
The growth during the half century of Milton Hydro's existence is indicated in these statistics: in 1914 the total number of customers amounted to 235 and peak load of the utility was 284 kilowatts. At the present there are 1,877 customers of all classes and the peak load of the utility is 5,023 kilowatts.

Milton Hydro has a progressive Commission. The members are Chairman W. C. Rowney; Vice-Chairman Colin Smillie; and Mayor Sidney G. Childs.

Display

As part of its 50th anniversary celebration, Milton Hydro-Electric Commission has a special window display in its Main St. office showing what hydro service was like half a century ago.

An old electric stove, hair curler, frying pan, pots, tea kettle, irons and other kitchen utensils are included in the display.



—Ontario Hydro Photo

INTERIOR RENOVATED: Manager O. L. Hadley is turning on new lights installed in the attractively, redecorated office of Milton Hydro, Main St.

LIVE BETTER ELECTRICALLY



—Staff Photo

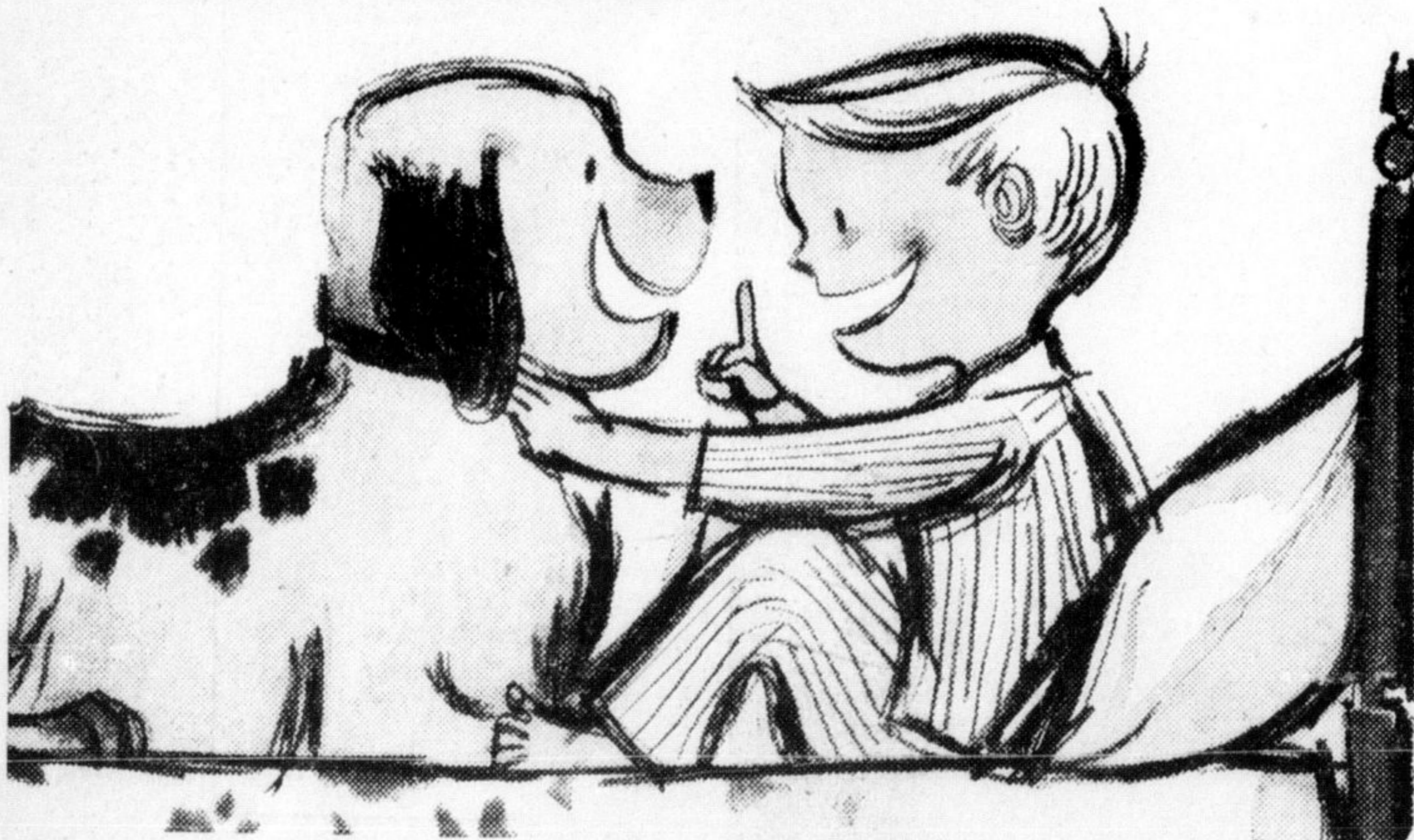
ILLUMINATED STREET MARKERS are to be installed at all 126 intersections in Milton, sometime in late summer or early fall. Two were erected in January on a trial basis. Hydro Manager O. Hadley, Mayor S. G. Childs and Hydro linesman Ed Ramsbottom look on here, as Len Ste. Marie installs one of the new lights. They cost \$5 to \$50 installed.



—Staff Photo

AN INTERESTING DISPLAY of the electrical facilities of 50 years ago, decorates the front window of Milton Hydro-Electric Commission's office. Helen Menefy shows off this antique electric stove, and some of the utensils that went with it in 1914. The display incorporates many utensils, such as hair curlers, irons, tea kettles and other kitchen tools of the period.

TOGETHERNESS



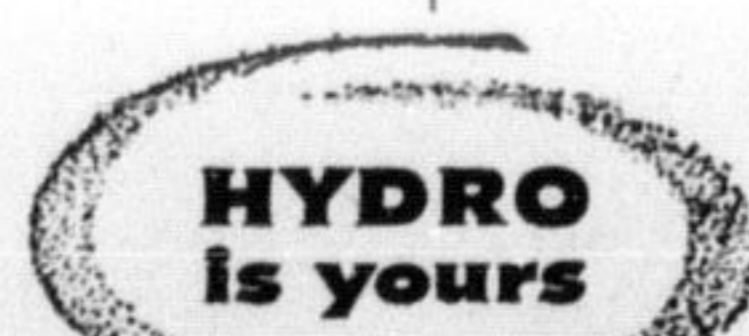
"We Never Run Out of Hot Water!"
... With Our New Cascade 40"
-- FROM MILTON HYDRO --

KNIGHT INDUSTRIES

(1964) LIMITED
HAMILTON, ONTARIO

MANUFACTURERS OF THE FAMOUS CASCADE 40

ARE PLEASED TO PARTICIPATE IN
MILTON HYDRO'S 50th ANNIVERSARY



LIVE BETTER
ELECTRICALLY

the wonderful advantages of CHROMALOX ELECTRIC HEATING

For Total or Supplementary Heating



BASEBOARD HEATERS

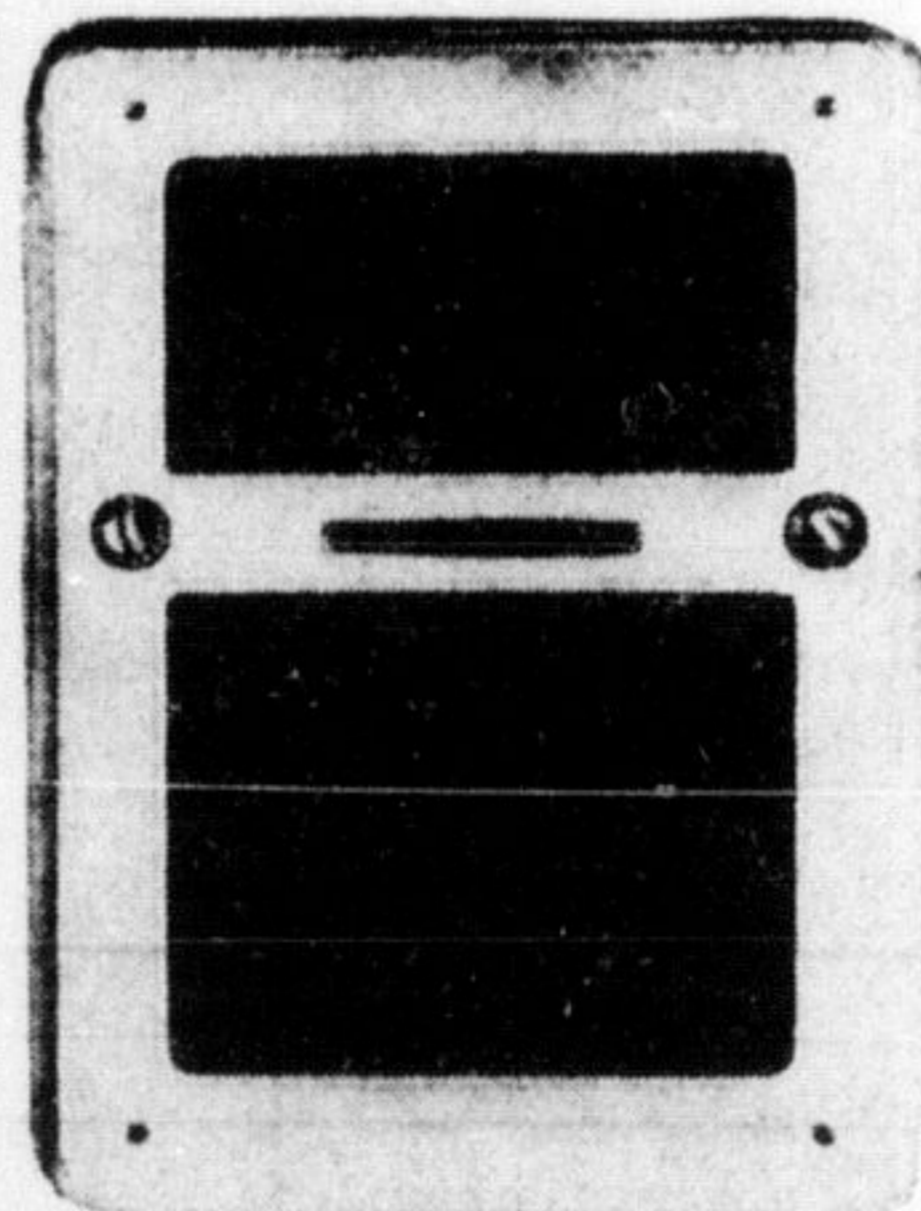
for complete home-heating comfort . . . rugged, dependable, space-saving with built-in thermostats, if desired

FEATURES . . .

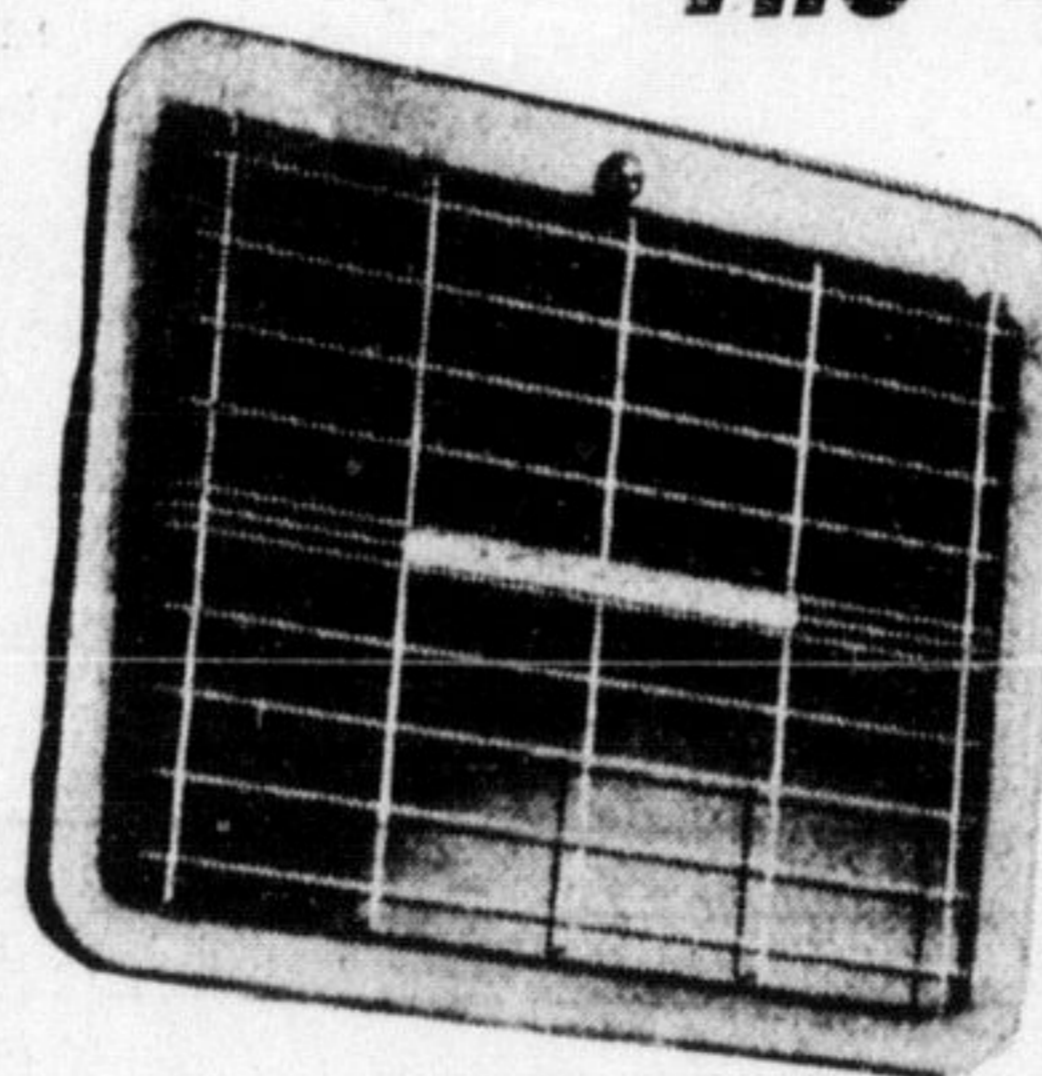
- ★ **SAFE**—No flammable fuels — completely flameless. Safe as the electric light you read by!
- ★ **CLEAN**—The ultimate in cleanliness! — No dust, soot, smoke or dirt of any kind. Substantial savings in cleaning and decorating costs!
- ★ **LOW INSTALLATION COST**—No furnace or fuel tank — no piping ductwork or radiators! Less complicated, easier installation!
- ★ **SPACE SAVING**—Electric heat installations are compact, requiring a minimum of space — therefore more useable living area.
- ★ **MAINTENANCE**—No annual cleaning or inspection needed — a completely carefree heating system.
- ★ **OPERATING COSTS**—Reduced hydro costs during the past year or so have made Electric Heating highly competitive with other fuel systems.

CUSTOM-COMFORT HEATING — Electric Heat is direct heat — can be controlled, area by area — exact level required can be maintained where required. No doubt about it . . . ELECTRIC HEAT is gaining favour everywhere . . . in new homes . . . Churches . . . offices, schools, motels . . . wherever heat is needed for comfort! And this modern method of heating is opening up a big market in the remodelling field, too! Why not learn the Electric Heat story now — write Chromalox for full details — find out how to **HEAT BETTER — ELECTRICALLY!**

The complete quality line



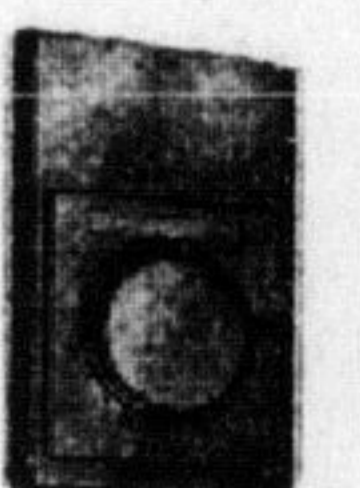
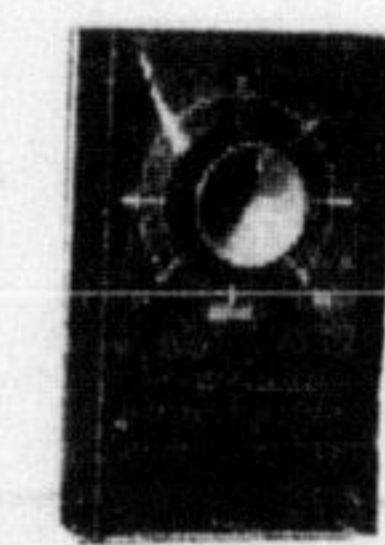
CHROMALOX the complete quality line . . . Forced-Air fan driven wall Insert Heaters . . . ideal for recreation rooms . . . added-on rooms . . . attics.



Radiant Wall Panel heaters are excellent for auxiliary heating.



Convection Floor Drop-In Heaters for difficult-to-heat areas such as floor-to-ceiling windows, split level homes.



Thermostats . . . for manual or automatic control — maintain individual room temperatures if desired.



THE CANADIAN **CHROMALOX** COMPANY LIMITED

210 REXDALE BLVD., REXDALE (TORONTO) — 241-8621

Write for the name of your local contractor