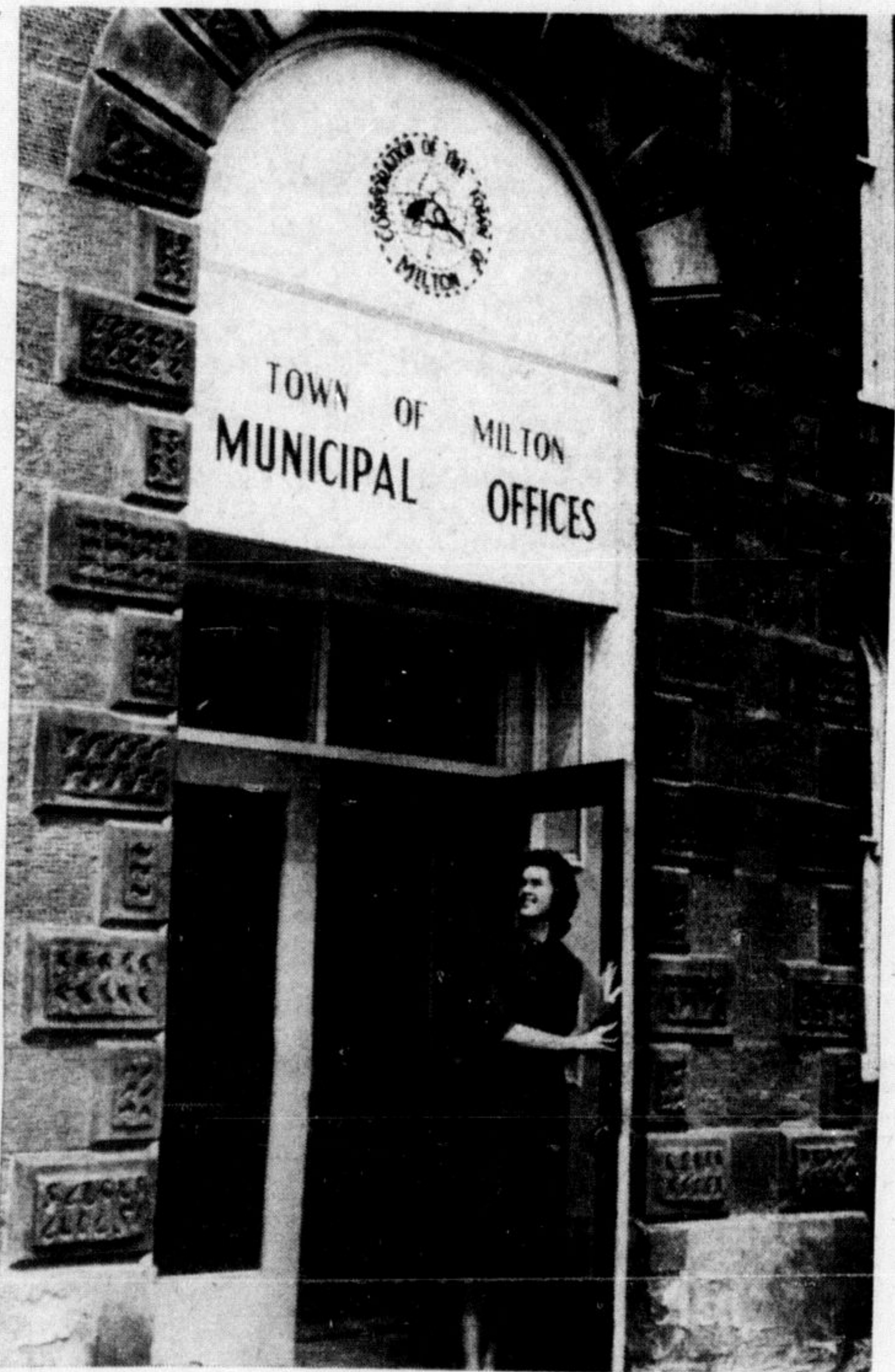


Milton Hydro -- 50 Years of Service



—Staff Photo
MILTON'S FIRST ALL-ELECTRIC apartment building is under construction on Ontario St. near Mountainview Drive, and this photo was taken at the sod-turning ceremony a few weeks ago. Discussing plans for the electrically-heated, 30-suite Maple Glen Apartments are builder Martti Lauronen of Lauronen Home Builders, Hydro's Central Region Manager Adam S. Smith, Hydro's consumer service and sales engineer C. E. Crease, Milton Hydro chairman Bill Rowney and realtor and rental agent Brian Best.



NEW SIGNS
Visitors to Milton are impressed by these new illuminated street markers, shown at left, which will be set up at all intersections later this year. Milton is believed to be the first community in Canada to place a lighted sign at every corner of the town.

—Staff Photo
NOW WE KNOW: For years the Milton Town Hall just had a small sign tacked on the front, to let people know it was the municipal offices. This year when Milton Hydro decided to make the town a birthday present — on Hydro's 50th birthday in Milton — and light up the front of the old stone building, a new sign was ordered. Clerk's office receptionist Mrs. Joan Parker admires the newly-lettered sign and town crest above the main doorway.

AT COURSE
Fire Chief A. E. Clement this week attended a fire chief's extension course for Municipal Fire Chiefs at the University of Toronto. The course was followed by a day gathering for the Ontario Fire Chief's Conference.

\$UPER \$AVE SET the PACE!

WELL STREAKED — LIGHT SMOKED — TENDR
BACON 59^c lb
FRESH SLICED — TENDER
PORK LIVER 29^c lb
MEATS SPECIAL SELECTED—BONELESS—NO WASTE—FOR ROASTING
LEG O' PORK 69^c lb

LEAN MEATY PORK — IDEAL FOR STUFFING
SPARE RIBS 49^c lb

Compare at \$1.59

30c Off Pack
KING SIZE CHEER

PACKAGE
\$1.17

Compare at \$1.89

LIQUID
AERO-WAX

½ GAL. TIN
\$1.39

SAVE clean through your



Compare at 2 for 27c!
S.O.S.
SCOURING PADS

4 pad package
10^c ea

SPRING CLEANING NEEDS!

Compare at 53c
HEREFORD CORNED BEEF
12-oz. TIN
45c

DEBBIE LIQUID DETERGENT 32-oz. BOTTLE **69c**

REG. 49c! — FROZEN DIPLOMAT — BEEF, CHICKEN, TURKEY
TV DINNERS 39^c

COMPARE AT 37c — ALLEN'S VITAMIN 48-oz. TIN
APPLE JUICE 3^F 1^R \$1

COMPARE AT 3 FOR 50c — EVAPORATED TALL TINS
CARNATION MILK 7^F 1^R \$1

COMPARE AT 29c — 2 ROLLS PKG. OF 2 ROLLS
Purex TISSUE 249^c

COMPARE AT 3 FOR 35c! — LUSHUS
Jelly Desserts 10^P 1^K \$1

COMPARE AT 2 FOR 35c! — YORK FANCY 15-oz. TINS
CREAM CORN 7^C 1^S \$1

BISCUIT SPECIAL! SUPREME FANCY ASSORTMENT 20-oz. Tins
SLICED BEETS 3^F 39^c

COMPARE AT 75c — TREESWEET 48-oz. Tin
ORANGE JUICE 69^c

SUPER SAVE — FRESH Special
DONUTS 249^c

NAVAL LARGE SIZE
ORANGES

2 DOZ. SIZE 113's **99c**

Guaranteed Sweet — Reg. 69c doz.
SAVE 37c

TANGMERE NO. 1 WHITE
MUSHROOMS

45^c lb

National Baby Week Celebration
Super Save
WITH PURCHASE OF 6 TINS HEINZ BABY FOODS
THIS COUPON GOOD FOR **1 TIN FREE**

Free Tin May Be Any Regular 4 1/2 oz. Strained or Junior Food
THIS OFFER GOOD UNTIL MAY 6, 1964

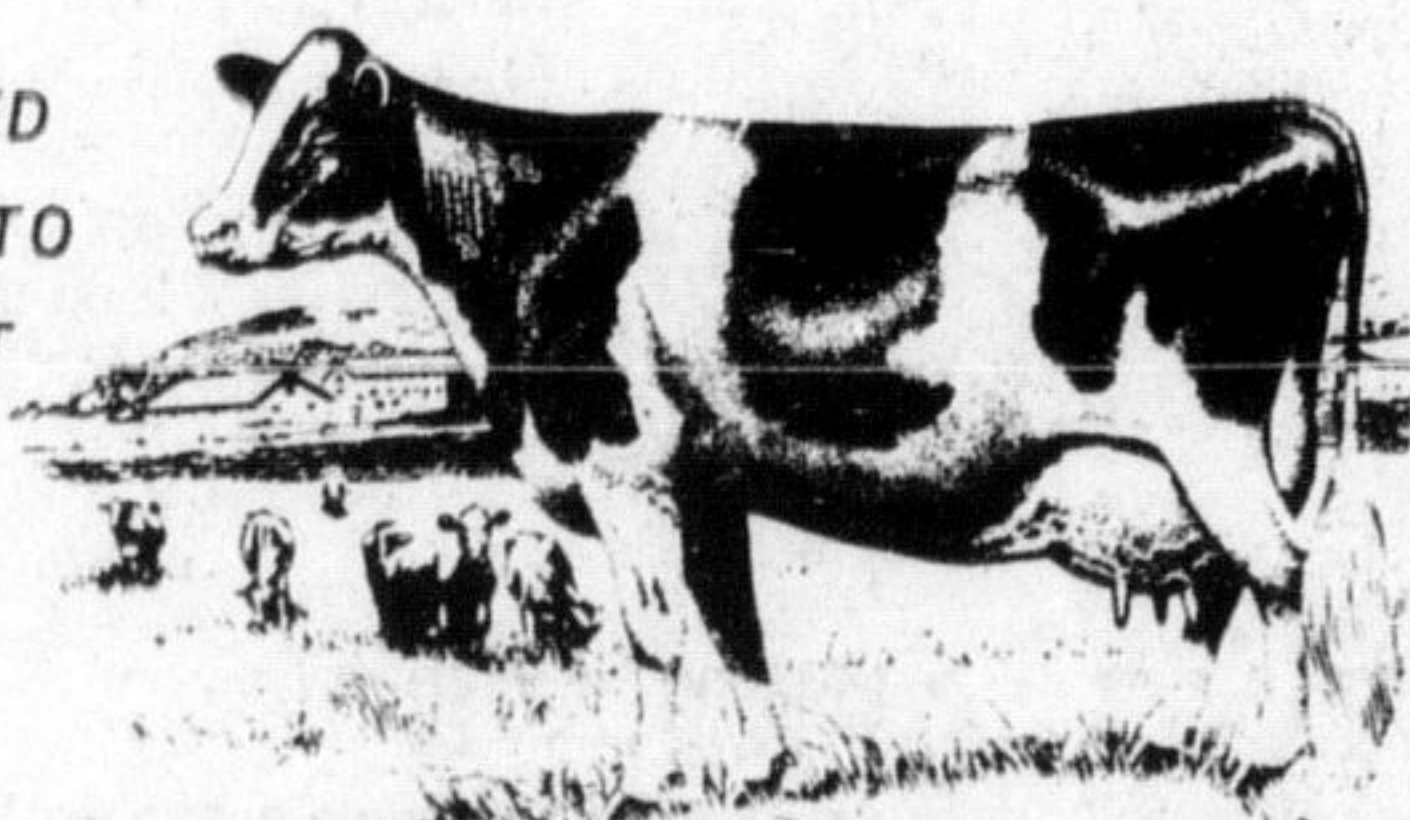
Look Mr. Dairyman!

1. You want more milk per cow?
2. Or perhaps a lower feed cost?
3. Or maybe both?

THEN SWITCH TO

Supersweet DAIRY FEED 16%

THE ONLY FEED FORMULATED TO GIVE YOU BEST RESULTS AT LOWEST COST



Supersweet Formula Feeds

DIVISION OF
ROBIN HOOD FLOUR MILLS LIMITED
MARTIN ST. MILTON TR 8-2311

LEDWITH'S

