

## Winter Beauty in Our Midst

### Take Walk Around Mill Pond for Scenic Treat

By Roy Downs

Photos by Brian McCristall

The Historic Mill Pond Area, right in the centre of Milton, is a beautifully scenic spot at any time of the year, but is especially attractive in the fall when the leaves turn golden, or in the winter when a thick blanket of white snow covers the ground. We walked through the area the other day, as a bright sun cast long shadows across the snow, and truthfully, it would be hard to find a more picturesque beauty spot anywhere in Halton County.

The pond is linked with Milton's early history, for it was on the 16 Mile Creek that Jasper Martin decided to build his mill — the nucleus for the community — and the pond was soon dug by hand to provide a storage body of water to operate the grinding wheel in the nearby mill.

The creek still flows beside the pond bank, from the dividing point (known as "the whirlpool") near Bronte St. to below the mill near Main St. Today, while the pond is blanketed with a coat of ice at least a foot thick, the creek runs open in spots where the swift current of the waters has prevented a freeze-up.

Trudging through the foot-deep snow, carefully testing the strength of the pond and creek ice before venturing onto it, and walking beneath trees in the surrounding bush, you can see the possibilities of a full-scale park which could some day be developed there.

Robin Hood Flour Mills Ltd., the former Milton Milling Co. and owners of the mill, have offered to donate the mill pond to the town as a parksite. Their generous offer includes the pond and land holdings of 30 to 35 acres along the stream and out to Bronte St.

The pond lies adjacent to the developed Rotary Park, and at the western end of the pond, 15 acres owned by P. L. Robertson Manufacturing have been leased to the Rotary Club for an extension of the park. Put it all together, picture it as a full-scale park to be left in its natural state, and you have a decided asset that no other town Milton's size can boast.

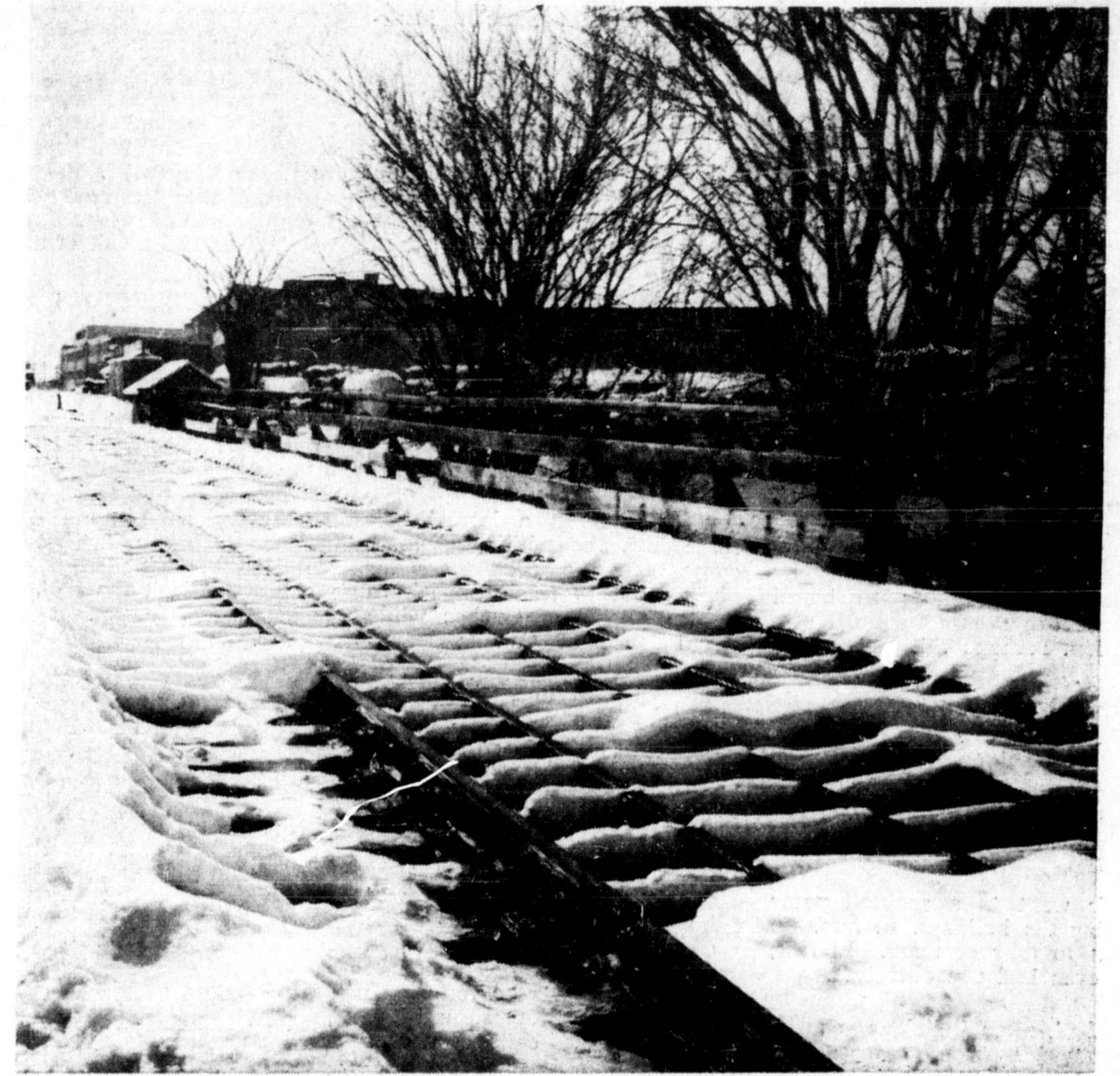
Not doing anything this weekend? Take a walk through the area, skirt the pond banks and walk through the bush, over the C.N.R. tracks, and upstream to the "Y" in the creek at the old dam and "whirlpool" cement structure. You're bound to enjoy it, and you'll be surprised at the hidden beauty right in our town's midst.



Looking up the pond bank between the pond and the creek



Human footprints cut a trail through the thick bush



Sun and shadows combine for an interesting picture study



Scenic beauty is evident at the old dam upstream from pond



Leaves still flutter on some trees and cast shadows on the snow



Trees along the pond bank cast long shadows on the snow

## ST. LAWRENCE FRUIT and GROCERY STORE

### JANUARY SALE! MORE FOOD FOR YOUR MONEY HERE

No. 1 MacIntosh Apples ..... bskt. 69c Firm, Crisp RADISHES .. 3 pkgs. 19c

Good Size - Sunkist Navel Oranges ..... 3 doz. \$1 Good Size, Sweet, Juicy TANGERINES doz. 39c

MIXED NUTS ..... 39c lb. While They Last

FRENCH CREAMS CANDY 39c lb. While They Last

IDEAL BRAND GINGER ALE ..... 6 qts. \$1.00 Plus Deposit

DUNCAN HINES DELUXE CAKE MIXES

KRAFT COMPLETE PIZZA MIX ..... 39c Box Save 13c

CHRISTMAS WRAPPING PAPER .. Reduced 50%

KRAFT CHEESE SLICES ..... ½ lb. pkg. 31c

KRAFT SKIM MILK CHEESE ..... 2 lb. box 79c

Ocean King FANCY PINK SALMON ..... 1 lb. tin 59c

DAINTY RICE ..... 2 lb. box 35c

CLARK'S TOMATO SOUP ..... 10 tins for 98c

HEINZ TOMATO KETCHUP, 11 oz. btl. 2 for 45c

Campbell's Chicken Noodle or Cream of Potato RED KETTLE SOUP MIX ..... 3 pkgs. 45c

Fresh, Lean, Pork Spare RIBLETS ..... 4 lbs. \$1.00 Maple Leaf BOLOGNA 3 lbs. \$1.00

Pec. or Sliced - Lean Peameal BACK BACON .. lb. 69c Maple Leaf WIENERS ..... lb. 43c

PHONE TR 8-6043 **RESTIVO'S** FREE DELIVERY

## Ontario Training Centre, Brampton Requires A Cook 2

This position demands a man with experience and training, capable of assuming charge of a shift under the direction of our chef.

Applicants must be in good health and of good character, preferably 25 to 45 years of age

ONTARIO CIVIL SERVICE BENEFITS — THREE WEEKS VACATION AFTER ONE YEAR, SICK LEAVE PLAN, SUPERANNUATION, ETC.

Apply in person to:

THE SUPERINTENDENT, ONTARIO TRAINING CENTRE  
QUEEN ST. AT McLAUGHLIN RD., BRAMPTON, ONTARIO  
Monday to Friday between 8.30 a.m. and 4.30 p.m.