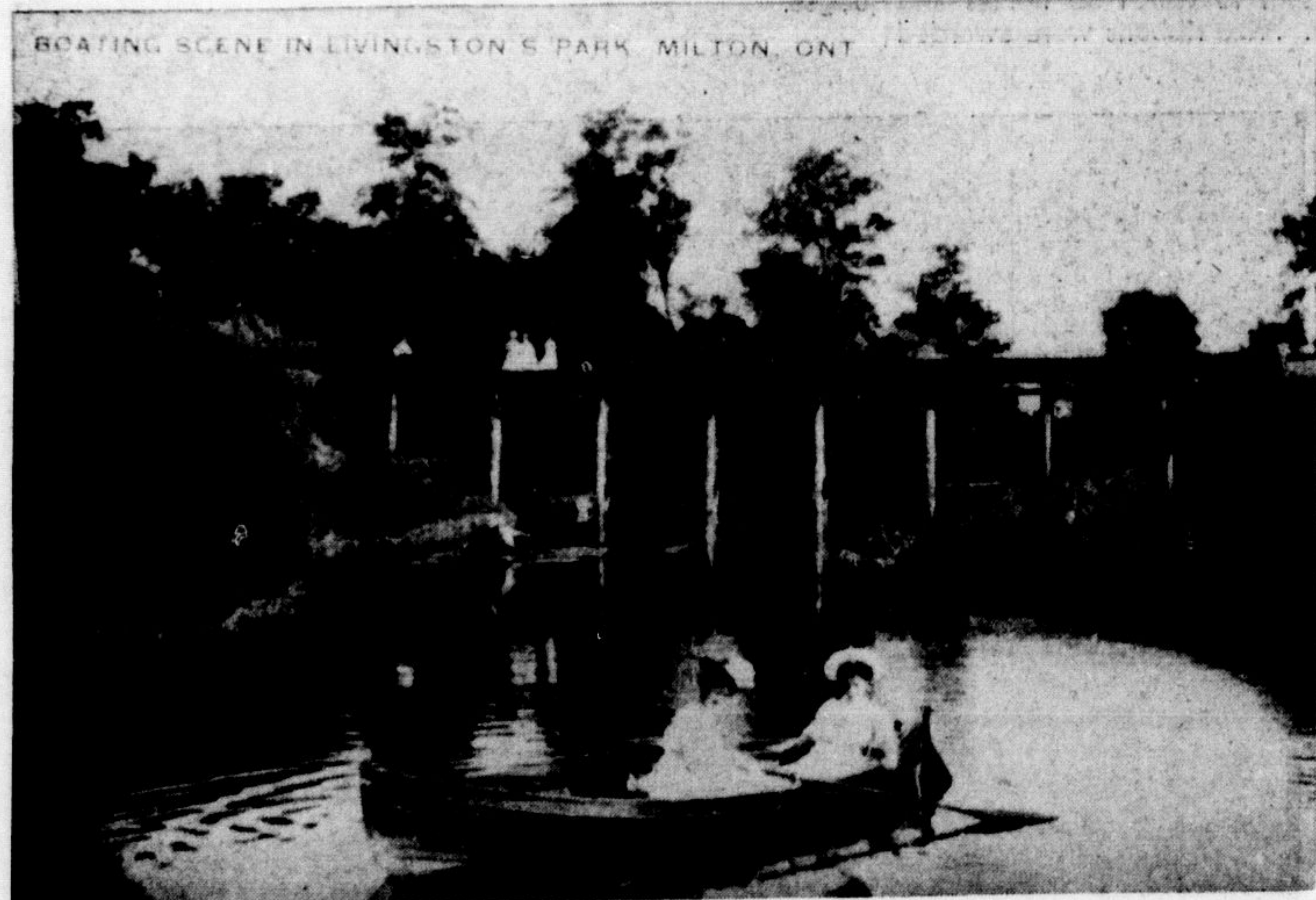


# Boating Once Popular Mill Pond Pastime



OLDER RESIDENTS OF MILTON can perhaps clear up the mystery of these two bridges. The one in the top photo appears to be the G.T.R. (now C.N.R.) railway bridge but the other elevated structure is a mystery.

**An Editorial Feature**  
**By Roy Downs**

Milton's historic mill pond, no longer necessary to drive the mill turbines, has an unknown future, but some happy memories are recalled by many of Milton's older residents.

Some of them will recall the pond back in the days when it was the local recreational point for Milton . . . the days when there were swings and slides for the children, tables and benches for the convenience of picnic parties, lovely treed walks through the dense bush surrounding the pond's west end, band concerts, garden parties, canoes and pleasure boats available for leisurely trips over the shining waters, swimming and skating. Ah, those good old days!

**Link with History**

The mill pond, often commonly known as Martin's Pond because of its link with the pioneer family that founded the town in the early 1800's, is presently owned by Robin Hood Flour Mills. The firm purchased the Milton Milling Company and the adjacent pond three years ago from Dr. C. A. Martin, great grandson of Jasper Martin, who was the town's founder and the man responsible for the first mill and the pond.

Until a few years ago, a tail-race from the pond fed water beneath Martin St. to operate a huge water-wheel in the mill. In its early days, this was the only source of power for grinding grain at the mill, and when electricity eventually took over, the water-wheel was kept in operation to reduce the power load.

**Destroyed in Fire**

Two years ago, Robin Hood Flour Mills discontinued the use of the wheel, and early this year, the wheel was destroyed when the historic mill was gutted in a serious fire.

Mrs. Lorne Dixon of Main St. Milton, submitted the accompanying photos (printed in Germany) showing some early scenes of the pond and its surroundings, during the time it was known as Livingston's Park — probably in the late 1800's. Under Mr. Livingston's ownership, the pond was thrown open to the public for recreational purposes, according to historian

Gwen Clarke in her 1955 publication, "Halton's Pages of the Past". The tree-lined pond was used in summer for boating and swimming, and it provided a good field of ice for winter skating. Sunday school picnics and garden parties were held frequently, often with a band engaged for the occasion. House parties were a popular feature of the time and grand dances were held in the ballroom of the beautiful Livingston house, now owned by Mr. and Mrs. M. S. Kernighan.

**Boating, Fishing**

Swings and slides were available for the children and picnickers used benches and tables supplied for the purpose. Canoes and pleasure boats were a popular sight on the pond and there were plenty of fish as well.

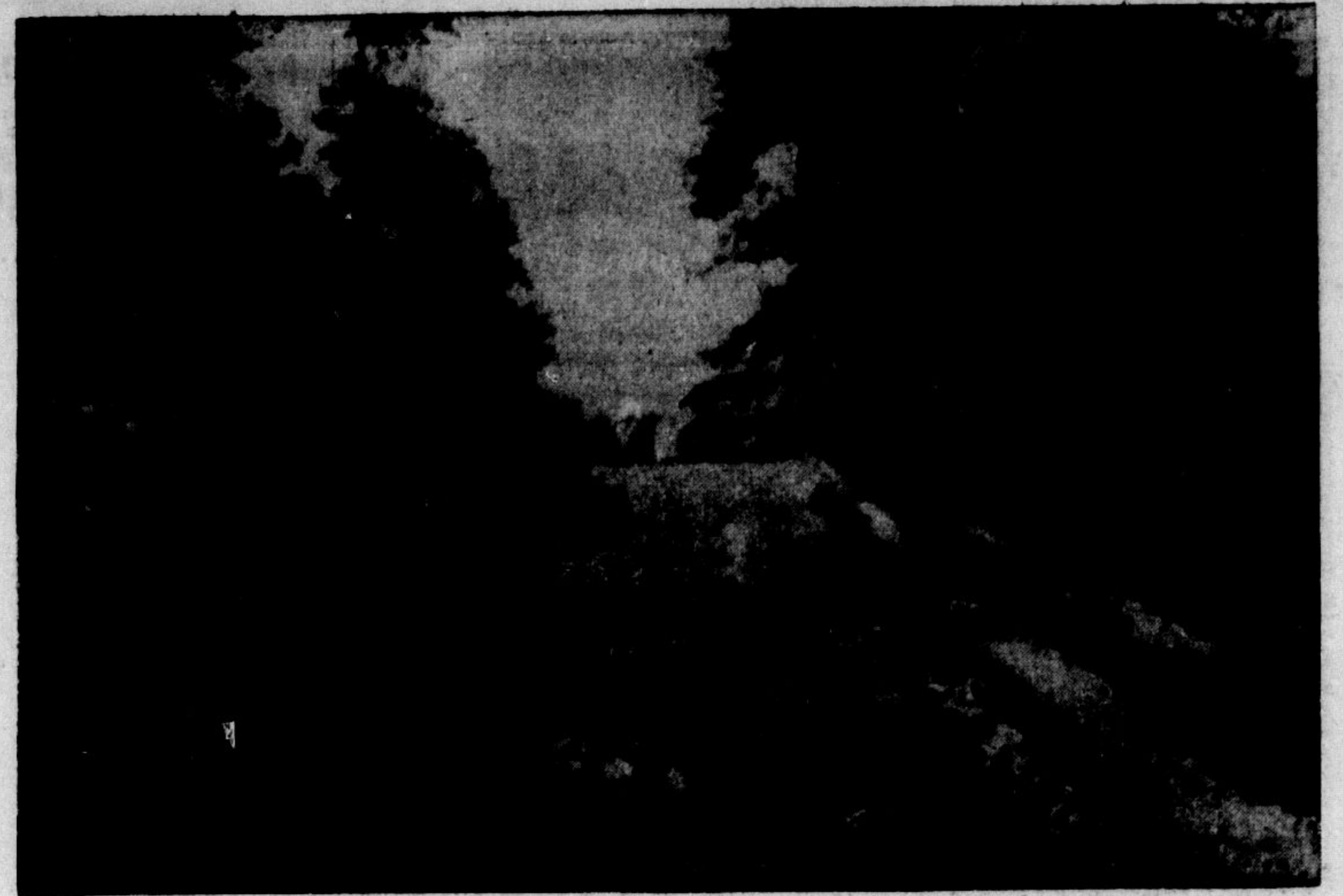
The Jasper Martin family were the first settlers in what is now Milton, arriving in 1821. They had emigrated from Newcastle, England in 1818 and spent three years at York (Toronto) before receiving a crown grant for 100 acres of land forming Lot 14, Concession 2, in Trafalgar Township. The township had been settled around 1807, and first settlers in the Milton district date back to 1818, although none appeared to have lived on the land now known as Milton.

In 1822, Jasper Martin erected his first grist mill to serve the other settlers in the district. It was a frame building. By 1925, he has added a sawmill and an ashery to the operation.

**Hardest Task**

Jasper Martin dammed the creek at what is now Martin St. and created the artificial pond from the waters of the Sixteen Mile Creek that meandered through the town. Milton was partly virgin forest and partly swampy marshland, so it was a back-breaking chore clearing the heavily timbered land and harnessing the power in the creek.

First excavation was done by hand digging, but later ox-drawn barges hauled away the mud and silt. The workmen were careful to preserve as many trees as possible, along the banks of the pond. When Jasper Martin died in 1833, his sons carried on the work at the mill and in 1856 erected (Continued on Page Six)



LOOKING EAST from the Grand Trunk Railway bridge (now the Canadian National Railway) you could look down the pond bank and see Martin's mill in the distance. Boating was a popular pastime in those good old days.



A LOVELY WOODED TRAIL shown in this early photo of the pond area, is still there today. The trees have grown some, but the trail remains a half-century later.

# BIG INVENTORY REDUCTION SALE

"A DOLLAR SAVED IS A DOLLAR EARNED"

SEPT. 19th — 30th

SAVINGS OF 10-20% ON FARM HARDWARE

PRESTON STEEL STOCK TANKS	ROSCO LIFETIME FARM GATES
6' SIZE WAS \$29.50 SALE PRICE - - - - \$24.00	12' SIZE WAS \$27.00 SALE PRICE - - - - \$24.00
7' SIZE WAS \$34.50 SALE PRICE - - - - \$29.00	14' SIZE WAS \$29.00 SALE PRICE - - - - \$26.00
8' SIZE WAS \$41.00 SALE PRICE - - - - \$33.00	16' SIZE WAS \$32.00 SALE PRICE - - - - \$28.50

JAMESWAY FEED CARTS 2 ONLY -- \$47.50 EACH

T BAR STEEL FENCE POSTS \$1.00 each -- while they last

PEERLESS OR DU-ITT CATTLE OILERS  
\$55.00 and \$64.50  
BONUS You May Purchase 12 Gallons of Insecticide at Half Price

HALLMAN ELECTRIC FENCERS  
\$26.50 \$29.50  
BONUS 10-Lb. Roll Electric Fence Wire FREE With Each Fencer

SPEED KING GRAIN AUGERS  
11' SIZE WAS \$26.00  
SALE PRICE - - - - \$22.00  
16' SIZE WAS \$32.00  
SALE PRICE - - - - \$27.00

HEAT HOUSERS  
For Most Models of Massey Tractors  
15% DISCOUNT

CYCLONE SEEDERS OUR PRICE \$72.50

## MILTON MILLING CO.

FARM EQUIPMENT DIVISION OF ROBIN HOOD FLOUR MILLS LIMITED  
27 MARTIN ST. MILTON ONT. 878-2311

SCARFE'S PAINT 50% OFF WHILE STOCK LASTS

## SAVINGS GALORE ON

NEW AND USED FARM EQUIPMENT  
DOZENS OF ITEMS HAVE BEEN DRASTICALLY REDUCED

Fleury Bissell Products  
15% DISCOUNT  
● 3-SECTION L.S.T.H.—W/DRAW BAR  
● 4-SECTION L.S.T.H.—W/DRAW BAR  
● 1-9' TANDEM DISC HARROW

HAY RAKES  
TWO ONLY M.F. "36"  
RAKES

SALE PRICE \$475.00  
With Used Tires — FOB Milton  
Suggested List \$573.00 FOB Factory Less Tires

WAGONS  
GEO. WHITE and OTACO  
15% DISCOUNT  
● 1-5 1/2 TON WAGON  
● 3-4 TON WAGONS  
● 1-3 TON WAGON

MISCELLANEOUS  
● 12' CHAIN HARROW  
● "FREEMAN" LOADER FOR M.F. 50 TRACTOR  
● "ROBIN NODWELL" LOADER FOR M.F. 35 TRACTOR  
● "LELY" LIME AND FERTILIER SPREADER

## USED EQUIPMENT

Here Are a Few of the Items "PRICED TO SELL"

- |                                     |                                      |                             |
|-------------------------------------|--------------------------------------|-----------------------------|
| 1—Geo. White Post Hole Digger       | 1—M.F. 50 Gas Tractor                | 1—I.H.C. 45 Baler           |
| 1—Kim Post Hole Digger              | 1—Cockshutt 40 Tractor               | 1—Case Rake                 |
| 1—Massey Harris 60 Combine          | 1—M.M. Model Z Tractor               | 1—New Idea Rake             |
| 1—Massey Harris 26 Combine          | 1—M.H. "81" Tractor                  | 1—I.H.C. 3 Furrow Plow      |
| 1—Allis Chalmers Combine            | 1—Ford 8N Tractor                    | 1—M.H. 3 Furrow Plow        |
| 1—Cockshutt "11" Drill R.T.         | 1—Ford 9N Tractor                    | 1—Case 3 Furrow Plow        |
| 1—Loader I.H.C. "H" Tractor         | 1—Allis "C" Tractor                  | 1—Ford 4 Furrow M.T.D. Plow |
| 1—Loader I.H.C. "M" Tractor         | 5—Used Disc Harrows                  | 1—Cockshutt 3 Furrow Plow   |
| 1—Loader M.F. "50" or "60" Higharch | 2—Sets Used L.S.T. Harrows           | 1—Cockshutt 2 Furrow Plow   |
| 1—Loader M.F. "35" Tractor          | 1—New Holland "66" Baler with Engine | 1—M.F. 2 or 3 Furrow Plow   |
- PLUS MANY MORE ITEMS