

OBITUARY

**Elizabeth Beasley
Native of England**

Elizabeth Hannah Beasley, a native of Newbury, Berkshire, England, died suddenly at her home at 52 Miles St., Milton, Sunday, December 10. Mrs. Beasley had lived in Milton with her husband Albert, for the past 34 years.

Born May 31, 1888, the daughter of Mr. and Mrs. Henry Pearce, she was married in Newbury in 1907 and came to Canada with her husband in March of 1912. Mr. and Mrs. Beasley had four children—Mae (Mrs. L. Watson) of Hamilton; Kathleen (Mrs. D. Johnston) of Milton; Bert of Peterborough; and John of Hamilton. Mrs. Beasley leaves three sisters—Annie and Gertrude, living in England, and Louise, Saskatchewan — and two brothers, Frank and Charles, presently living in England. Mr. and Mrs. Beasley also had 12 grandchildren.

Mrs. Beasley was a member of Grace Anglican Church. The funeral, held Wednesday, December 13 at McKersie funeral home, was

**The
BIBLE
Today**



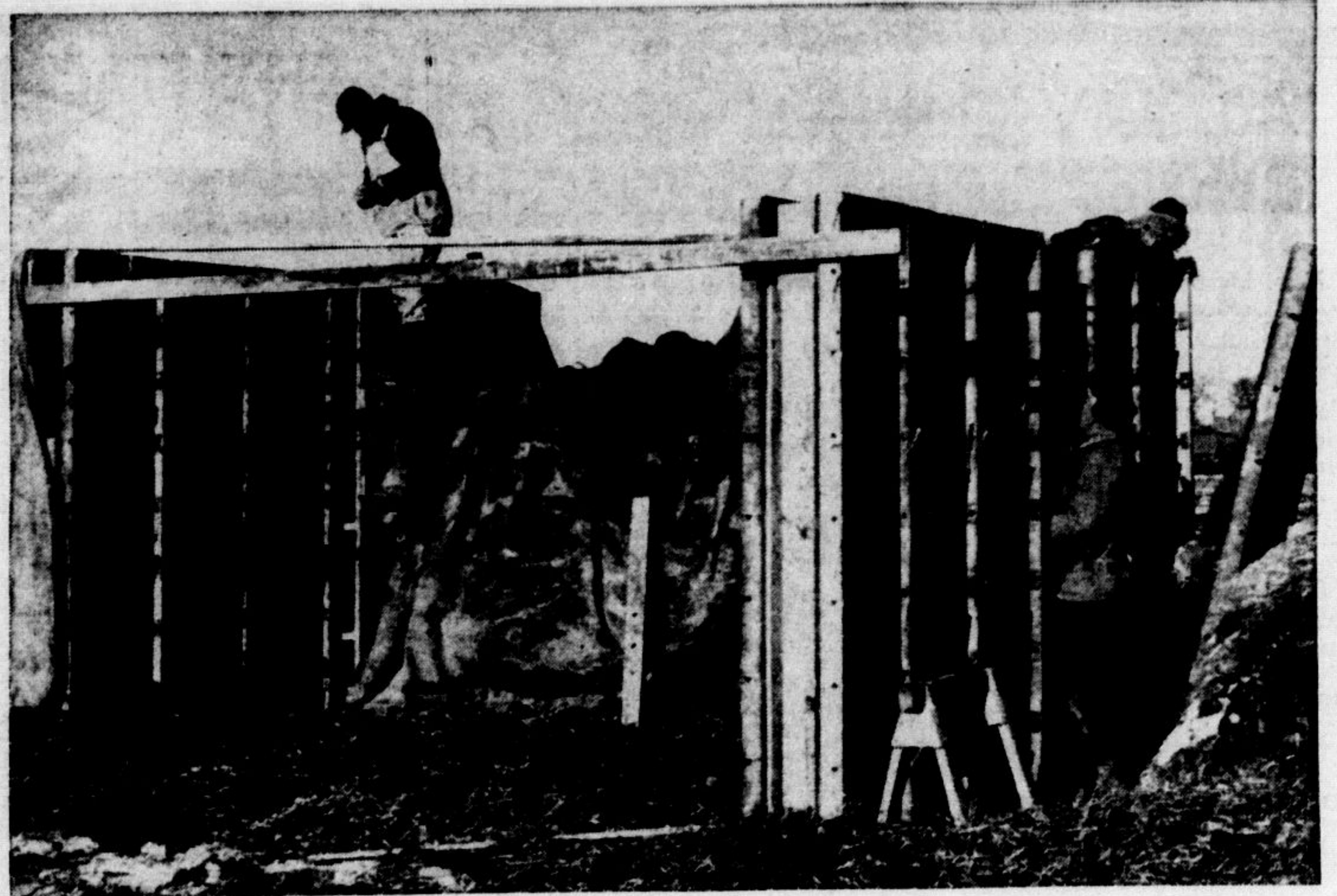
The Bible Society has been working on 84 new languages during 1961 and has issued an average of one new translation every four weeks.

An increase in this activity is planned for 1962.

Suggested Readings

Sunday, Ephesians 1: 1-23; Monday, Luke 2: 40-52; Tuesday, Luke 3: 21-22; Wednesday, Luke 4: 1-13; Thursday, Luke 4: 38-44; Friday, Luke 5: 1-11; Saturday, Luke 5: 18-26.

conducted by Rev. D. A. Powell, rector of Grace Church. Interment was at Evergreen Cemetery. Pallbearers were Sydney Dance, Arthur Charlton, Jack Bristow, Jack Charlton, Oliver Hull and Harvey Black, all friends from Milton.



—Staff Photo

COUNTY COURT HOUSE and administration building is under construction on the north side of the Base Line at Ontario St., Milton. Tope Construction Co., Hamilton, moved men and machinery into the site shortly after the November 10 approval of the county debenture issue by the Ontario Municipal Board. The building is to cost \$760,462. Above, workmen work on the only structure to appear to date. All other work has been excavating and grading.



**REED - REDFERN
LTD.**



To everyone we wish a New Year filled with happiness and good health.

R. S. ADAMS STORES LTD.



New Year Wishes

We're coming your way to wish you the kind of a New Year that you will long remember as the happiest, the healthiest and the most prosperous.

MILTON FABRIC CENTRE

BRIEFS

— There were only two minor accidents in Milton last week, despite slippery conditions. Damage totalled only \$65.

— Schools in town held Christmas parties, just prior to taking off for a 10 day Christmas holiday.

— So far, three drivers in Milton have been arrested and charged with impaired driving. Milton police are keeping a close watch for such drivers and conviction on an impaired or drunk driving charge carries with it at least a fine and possibly a license suspension, so remember the old cliché — If you drink, don't drive.

— Large crowds of worshippers ushered in Christmas Day at midnight communion services at Grace Anglican and Holy Rosary Roman Catholic Church.

Any baseball team could use a man who fields perfectly and never strikes out. The catch is how are you going to make him throw away his hot dog and come down out of the stands.

— The driver was unhurt but the truck received \$1,500 damage Thursday when a truck driven by James Banton of Campbellville slid into a ditch on the Sixth Line near Halton Crushed Stone.



Thankful thoughts and a big measure of New Year's happiness to all our friends!

**VANO & PAUL
BEAUTY SALON**

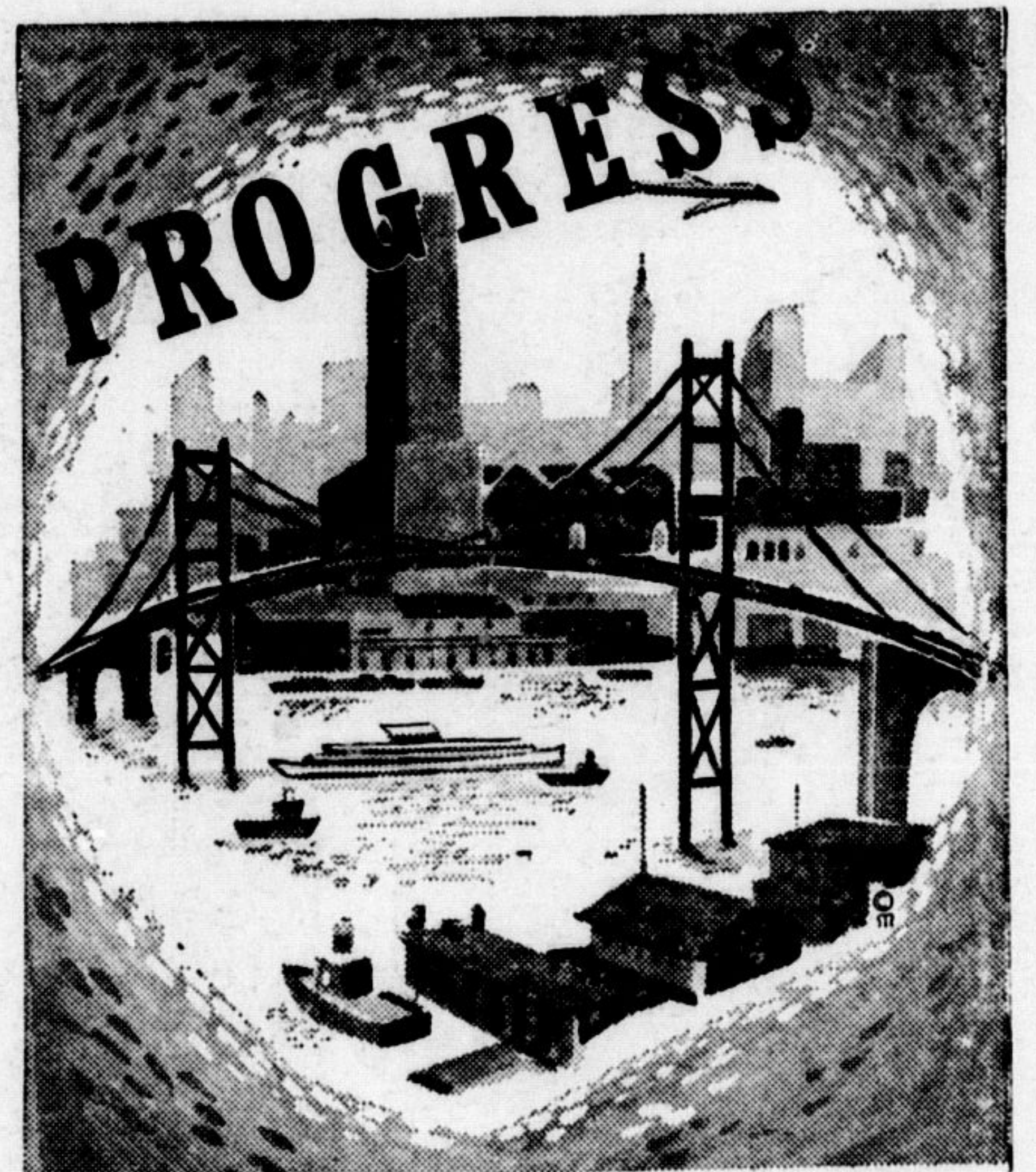
95 Main St.

Milton



**RAY
GUAY
SIGNS**

Milton



As we greet the coming of the New Year with every good wish to you and yours, we join in the hope that this may be a year of growth and progress for all of us...in our lives, our community and our nation.

R. McDUFFE & SON LTD.

JOHN DEERE EQUIPMENT