

To Choose Halton Representative For Furrows Queen Competition

Advise Safety At Farm Ponds

At this time of year, water will attract children. In Ontario last year, 27 farm people were drowned.

In recent years, many Halton farmers have constructed ponds on their farms. At least one or two safety measures should be carried out around the ponds.

Keep a ten foot bamboo pole or an inner tube on a rope, or a two inch by eight inch by six foot cedar plank on a rope, handy to the pond.

The Halton Plowmen's Association this year will select a representative to take part in the Queen of the Furrows competition at the International Plowing Match.

The contestant will be selected on general knowledge of plows and plowing. In addition to tests and interviews on plowing knowledge, each county contestant will give an address on the activities of the local plowmen's association.

The Halton competition will be held at the Junior Plowing Match sponsored jointly by the Halton Plowmen's Association and the Halton Junior Farmers' Association on Saturday, September 10. The competition will be open to girls 18 to 30, resident on farms in Halton.

Advise Farmers to Consider Materials Handling Equipment

By W. Ross Milne, Agricultural Engineering Extension Specialist

While spring grain is going to be later this year than ordinarily, harvest will still not be too far away. Perhaps the interval after having gives us a time to think about how we might handle the grain a little easier this year.

Practically every magazine you pick up has articles in it about "Materials Handling" and pictures of big feed lots, etc., where this equipment is used. I think a person tends to think that this materials handling is all right for somebody who has a large set-up and that it cannot help the average farmer very much.

Good Returns
This is not true. Money spent on augers, elevators etc., will give you more returns in terms of time saved and work done per dollar invested, than practically any other machine you can think of.

If someone asked you if you would shovel grain for 15 cents an hour, you most probably would say "No". Yet this is how much you are working for when shovelling grain when you could be using an auger.

Augers do have some limitations. While their capacity is very large when used in a near horizontal position, it falls off very rapidly as they are raised to a vertical position.

Capacity Varies
For instance, a four inch auger 20 feet long with a half horse power motor on it will move 11,500 pounds, or nearly six tons an hour. If this same auger is stood on end, its capacity drops back to 5,000 pounds per hour.

or two and a half tons, less than half as much.

If very much grain is to be moved vertically, an elevator is recommended over an auger, as it will move much more grain for the same horse power. Some farmers in the county have built pits in their barn floors and have an elevator running the grain up to a height so that it will run to any bin in the granary.

Pit Holds Load
The pit should be big enough so that it will hold most of a load that is being drawn from the combine. A system such as this has another advantage in that if grain starts to heat in the granary, it can be augered to the pit from the bins and elevated to be run back to another bin. This lets most of the dust and heat out of the granary.

If you are short of bins, you might like to try an idea that John Turnbull at Ridgeway has developed. He took sheets of plywood (the number depending on how big a bin you want), glued and bolted the edge together to make a circular bin.

Compartments Favorably
The cost of this is around \$3.00 a ton stored, which compares very favorably with \$15.00 - \$18.00 for steel or square plywood bins. These can be used outside, but are better suited to inside use, as are all plywood bins.

If you would like plans for these bins, they are available at this office, Extension Branch, Ontario Department of Agriculture, Milton.

Remember, nowhere can you get better value for your money than dollars spent in small materials handling equipment.

The Bible Today



The Bible translators endeavoring to put the words and thoughts of the scripture into another language find many pitfalls, especially when there is no written language to begin with from which to make comparisons. There are also unsuspected distinctions in words that are a pitfall to the uninitiated and the unwary. In more advanced languages, this difficulty may be magnified.

For instance, in the Dutch language the word for "leg", which is "been" (pronounced bane) also means "bone". But the plural of "been" (leg) is "benen", whereas the plural of "bone" is "Beenderen". Also, if you refer to the legs of a table as "benen", you will be laughed at for to the Dutch that raises a picture of human legs. Inanimate objects, insects and animals do not have "benen" but "poten".

Your difficulties are not yet over because evidently the Dutch have such a high regard for a horse that his legs are called "benen" like human beings, not "poten" like other animals.

In the realm of abstract words such as "love", the difficulty of selecting a suitable word especially in primitive languages is increased. In the major Philippine dialects, from among many expressions of love, the word "guyma" in Cebuano, "pag-ibig" in Tagalog, "lugud" in Panpango and "ayat" in Ilocano are selected as expressing religious love, though each may also be used too for a noble and refined love of people for each other.

Bible translators sometimes seek for weeks to find the right word.

Bible Readings
Sunday, 1 Samuel 1: 1-28; Monday, 2 Samuel 7: 1-29; Tuesday, 1 Chronicles 29: 1-19; Wednesday, 1 Kings 3: 1-28; Thursday, 2 Kings 2: 1-18; Friday, 2 Chronicles 34: 14-33; Saturday, Matthew 7: 24-29; 21: 28-32.

POOR SUBSTITUTE
Motorist: "I'm sorry I ran over your rooster and I'm willing to replace him."
Farmer: "I don't think you can. Let's hear you crow."

HALTON COUNTY Weed Control News

by V. E. MCARTHUR, COUNTY WEED INSPECTOR

"APATHY" ENEMY TO WEED CONTROL

Lack of interest in any worthwhile project is often referred to as "public apathy". According to a well known Canadian dictionary, the word "apathy" when used as a noun means "want or dullness of feeling". When used as an adjective "apathetic", the meaning is slightly changed and is defined as "unconcerned".

Frequently at this time of year, weed inspectors are asked "Have you all the weeds in the area cleaned up?" To me this always seems to be a slightly embarrassing question to answer. Usually my reply is "Weeds will never be entirely cleaned up but we are endeavoring to carry out some measure of control."

Weeds Thrive
We have now entered the season when nearly all species are in flower, certainly the more obvious noxious ones such as "wild carrot" and "chickory". Flowery patches or white and blue are evident to a more or less degree in every municipality throughout the county.

Residents Responsible
The local residents are directly responsible for their own untidiness and usually have sufficient pride in their property to keep it reasonably free of weeds and in an attractive condition. However, a small percentage of both private and public areas are neglected, sometimes causing untold distress, expense and difficulty to neighboring land owners. I have come to the conclusion that "apathy" on the part of those responsible is the chief reason why certain areas are allowed to be neglected. I believe this applies to individual and public holdings alike.

While it is true most local residents are concerned about their own farms and yards, they are, however, guilty to some extent of being "apathetic" in regard to

weed control on public property. Municipal bodies who are responsible for roads, streets, parks etc., will only practise weed control to the extent to which residents are interested. Likewise neglected noxious weeds on railway rights of ways etc. owned by public corporations will only be looked after properly when the local taxpayers are sufficiently concerned.

"Public apathy" is a serious enemy of a good weed control program in any community. The co-operation of every individual is solicited so weed control can make a worthwhile contribution on both public and private property in all parts of Halton county.

DISMAL OUTLOOK

A local weather official was so often wrong in his forecasts that he became a joke to the community and asked to be transferred.

"Why do you wish to be transferred?" his headquarters wrote him.
"Because the climate here doesn't agree with me," he replied.

25-DAY SPECIAL LOW ROUND-TRIP RAIL FARES TO

the MARITIMES



Enjoy a refreshing sun-filled vacation "Down East" this year. Inexpensive holiday fares give you a 25-day limit with stopovers permitted.

Going dates

June 15th to September 7th

Consult any Canadian Pacific Railway agent

Canadian Pacific

SAFE SPEED
A man can't outrun his shadow but a driver can outrun his headlights. It is elementary common sense for night drivers to drive at a speed that will permit stopping within the stretch of road illuminated by the headlights. If you are outrunning your headlights, potentially you have lost control of your car, since you could not stop before reaching an unexpected hazard that suddenly comes into view.

The Canadian Champion, Thursday, July 28th, 1960

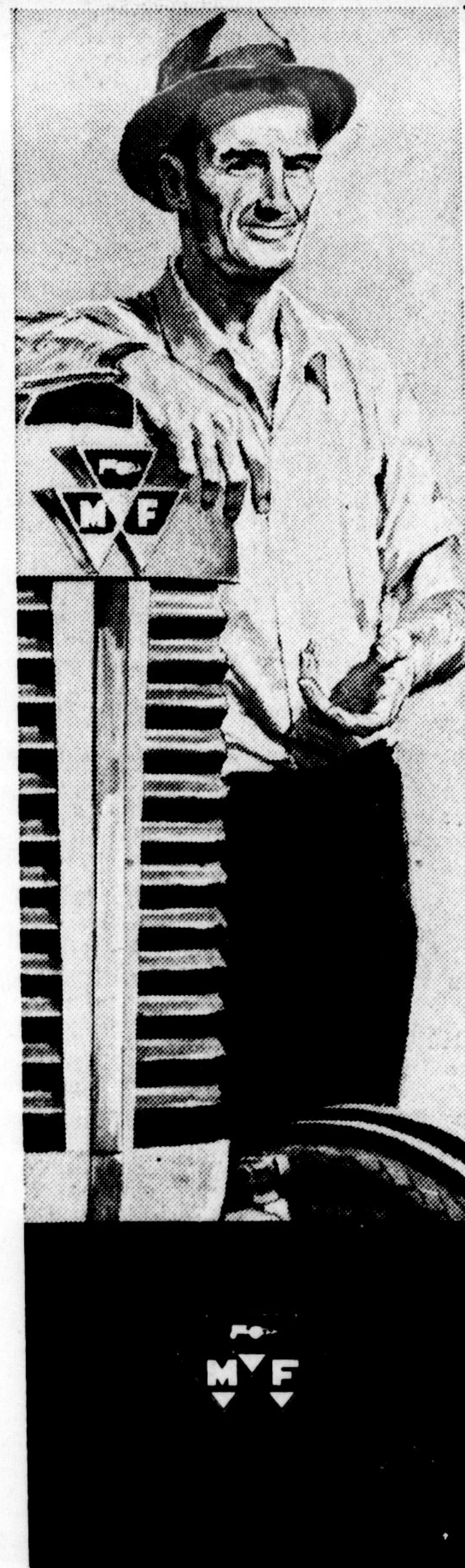
Staff Photos Still Available

Had your picture in the Champion lately? If so, you'll probably want a copy for framing or a scrapbook.

Reprints of all Canadian Champion staff photos are available

within one week of ordering, and cost only 75 cents for a glossy 5X7 inch photo, or \$1.00 for an 8X10. Negatives are filed away for at least 10 years, so even if it wasn't a recent photo, the prints are still available.

(P.S.—The price is the lowest of any newspaper in Halton County or surrounding area).



The only way to make farming pay... modern methods and machines

You can't farm profitably today by using yesterday's methods and obsolete machinery. They simply don't meet the demands of modern farming... high productivity and low production costs.

The profit potential of your farm can only be fully realized through utilizing modern methods and the latest farm machinery. Today's farm machinery measures up to the task of doing more work faster and more efficiently. Farm labour, a major cost in the operation of any farm, is kept to a bare minimum while the amount of work done per day is greatly increased. Critical farm operations get done at exactly the right time without depending on the availability of high priced farm labour.

Massey-Ferguson machines and implements completely fill the requirements of profitable farming—more work with less manpower at lower cost.

See your Massey-Ferguson dealer.

Massey-Ferguson Limited TORONTO

WK-100

PROFESSIONAL DIRECTORY AND TRAVELLERS' GUIDE

ACCOUNTING

EARL G. BLACK
B. Comm., R.I.A., C.A.
Chartered Accountant
163 Main Street
Box 460 Milton, Ont.
TRiangle 8-6542

LEVER & HOSKIN

Chartered Accountants
Phones: GL 1-4824 EM 4-9131
51 Main St. N. 212 King St. W.
Brampton Toronto

SURVEYORS

BOWMAN, BLACK AND SHOEMAKER
Ontario Land Surveyors and Engineers
Main Office: 30 Douglas St. Guelph Ont. TA 2-4031
Branch Office: 163 Main St. Milton, Ont. TR 8-6983

TRAVELLERS' GUIDE

CANADIAN PACIFIC RAILWAY
Standard Time
Going East—7:12 a.m.; 2:40 p.m.; 9:27 p.m.
Going West—8:55 a.m.; 6:55 p.m. daily.

CANADIAN NATIONAL RAILWAY

Standard Time
Going North—8:17 a.m.
Going South—7:12 p.m.
Daily except Sunday.

OPTOMETRISTS

ARTHUR A. JOHNSON
184 Main St., Milton
(Lloyd Davis Jewellery)
Phone TR 8-8972 Res. TR 8-9678
Tuesday and Friday mornings
Evenings by appointment

PUBLIC LIBRARY HOURS

Monday 1.30 to 5 p.m.
Tuesday 1.30-5 p.m. and 7-9 p.m.
Wednesday 9.30 a.m. - 1 p.m.
Thursday ... 1.30-5 p.m. and 7-9 p.m.
Friday ... 1.30-5 p.m. and 7-9 p.m.
Saturday 9.30 - 12; 1 - 5.

FUNERAL DIRECTORS

McKERSIE FUNERAL HOME
PHONE TR 8-4452 NIGHT or DAY
Sincere, Courteous Service

DENTAL

DR. G. A. KING
Dental Surgeon
Office in Royal Building, Milton
Hours 9-5
X-Ray Service Tel. TR 8-9762

DR. H. F. GALLOWAY

Dental Surgeon
155 Main St. on street floor
Hours 9 to 6 p.m.
X-Ray Service
Tel. Office TR 8-9201

CHIROPRACTORS

MacDOUGALL CHIROPRACTIC CLINIC
X-ray - Laboratory
Physiotherapy - Traction
Manipulation
35 Dunn St. North, Oakville.
Victor 5-2291
(Reverse charges accepted)

LEGAL

KENNETH Y. DICK
Barrister, Solicitor, Notary Public
196 Main Street
Telephone TR 8-4491

T. A. HUTCHINSON, Q.C.
Barrister, Solicitor, Etc.
131 Thomas Street
Milton
Telephone TR 8-6551

GEORGE E. ELLIOTT, Q.C.
Barrister, Solicitor, Notary Public
Office - 207 Mary Street
Telephone TR 8-9202

SHARPE AND NICHOLS
W. S. SHARPE
A. J. NICHOLS
Barristers, Solicitors and
Notaries Public
146 Main St., Milton
Telephone TR 8-6071

F. DAVID THOMPSON
Barrister and Solicitor
189 Main Street
TR 8-9351
Residence TR 8-6695

THIS SUNDAY'S Church Calendar



KNOX PRESBYTERIAN CHURCH

Minister: Rev. J. K. L. McGown, B.A.
Mrs. R. Wright, A.T.C.M.
Organist and Choir Master
"Come thou with us and we will do thee good." Numbers 10. 29.

SUNDAY, JULY 31st, 1960
10:00 a.m.—Junior Sunday School.
11:00 a.m.—Morning Worship.

GOSPEL HALL

296 Ontario St. N., Milton
TR 8-9389
SUNDAY, JULY 31st, 1960
7:00 p.m.—Gospel Service.
Frank Pearcey and Ronald Dart.

The special evangelistic services continue Monday, Wednesday and Friday at 8 p.m. Do plan to be with us and hear the old fashioned gospel of man's ruin through sin, and God's only remedy through the Blood of Christ. There are no collections at any of these services. All are heartily invited.
The Bible says, "This is a faithful saying and worthy of all acceptance, that Christ Jesus came into the world to save sinners; of whom I am chief." (1 Timothy 1-15.)

EMMANUEL BAPTIST CHURCH

Commercial St., Milton
Church Secretary: Mrs. Geo. Morton, TR 8-9716.
Student pastor: Mr. Clayton Coles, Johannesburg Seminary, Pretoria, South Africa.

SUNDAY, JULY 31st, 1960
9:30 a.m.—Sunday School for all ages.
11:00 a.m.—Morning Worship.
7:00 p.m.—Evangelistic Service.

We are having good attendances at our evening services. We invite all denominations to come and enjoy the fellowship. You will also enjoy the messages of Mr. Clayton Coles and the good music.
Thursday, July 28, 7 p.m.—Special closing of Vacation Bible School. All parents welcome at the church.
Friday, 8 p.m.—Young People's.
Wednesday—7:15 p.m., Young People's Prayer and Bible Study; 8 p.m., Adults' Service.

GRACE CHURCH ANGLICAN

Milton, Ontario
Rector: Rev. D. A. Powell
SUNDAY, JULY 31st, 1960
7th SUNDAY AFTER TRINITY
8:00 a.m.—Holy Communion.
10:00 a.m.—Mattins and Sermon.
11:00 a.m.—Holy Baptism.
The Rector in charge.

CHURCH OF CHRIST, OMAGH

No. 5 Sideroad and 4th Line
Trafalgar
SUNDAY, JULY 31st, 1960
10:30 a.m.—Bible School. Classes for all ages.
11:00 a.m.—Morning Worship.
Friday, 8:30 p.m.—Bible Study.
You Are Always Welcome
Listen to "Herald of Truth", CKEY Toronto, Sunday, 9:15 a.m.
See "Herald of Truth" on TV Channel 7, every Sunday, 8:30 a.m.

LOWVILLE - NASSAGAWEYA (ANGLICAN)

Rector: Rev. R. P. E. Jeffares, Campbellville ULster 4-2377
SUNDAY, JULY 31st, 1960
TRINITY VII
St. John's Church, Nassagaweya 9:50 a.m.—Holy Communion and Church School.
St. George's Church, Lowville 11:15 a.m.—Holy Communion and Church School.

HIGHWAY GOSPEL CHURCH

A local assembly of THE PENTECOSTAL ASSEMBLIES OF CANADA
Corner Wakefield and 25 Highway
Pastor: Rev. M. Christensen
SUNDAY, JULY 31st, 1960
10:00 a.m.—Sunday School. Classes for all ages.
11:00 a.m.—Morning Worship. Communion.
7:00 p.m.—Evangelistic Service.
Wednesday, 8 p.m. — Prayer and Bible Study.
Friday, 8 p.m. — Young People's Service.
A church you can make your home
All welcome

BOSTON AND OMAGH PRESBYTERIAN CHURCHES

Minister: Rev. B. A. Nevin, B.A.
SUNDAY, JULY 31st, 1960
10:00 a.m.—Boston: Worship Service.
10:15 a.m.—Omagh: Sunday School.
11:30 a.m.—Omagh: Worship Service.
Rev. T. M. McKennell, Hopedale church, Oakville, will preach.

BAHA'I WORLD FAITH

Baha'is believe — We desire but the good of the earth and the happiness of the nations; that all nations shall become one in faith and all men as brothers.

ST. PAUL'S UNITED CHURCH

Main and James Sts. Milton
Minister, Rev. J. Lorne Graham, B.A., B.D., C.D.
DURING THE MONTH OF JULY
11:00 a.m.—Morning Worship in Knox Presbyterian church.

ask the man who chose gas



Before you install any type of automatic heating in your home, why not "ask the man who chose gas". We're confident most of the answers will sound like this:

- "Cleanest fuel ever"
- "Dependable—even in the severest weather"
- "— the records prove natural gas is the safest automatic heating fuel"
- "Quiet as a kitten"
- "Costs no more than other automatic fuels"
- "Heating payments are easy — I distribute them evenly over a 10 month period from September to June"
- "If you need service — it's free"

Now is a good time to install natural gas automatic heating equipment. No down payment — no charges 'til September and be sure to ask how you can receive a big \$50.00 allowance.

See your gas heating contractor or

UNITED GAS LIMITED

HAMILTON • STONEY CREEK • DUNDAS • WATERDOWN • BURLINGTON
BRONTE • OAKVILLE • GEORGETOWN • ACTON • MILTON