

Hoping to be finished construction by the end of June, workmen are hurrying their efforts at the site of the new Milton District Hospital just south of Milton. The building's west wing and central section exterior are shown here while roof work and cement pouring continue inside. The building is 412 feet long and 224 feet deep, containing 33,000 square feet under one roof.



An interior wall in the east wing of Milton's new district hospital takes on shape as workmen lay the concrete blocks. There are 46,000 cement blocks going into the construction.

The Canadian Champion

Volume 97.—No. 43.

MILTON, ONTARIO, THURSDAY, MARCH 12th, 1959

Second Section.

Bricks, Blocks, Concrete, Doors, Sash Raw Material Shaping District Hospital



This is an interior view of the shell of the west wing of your new hospital. Interior walls and corridors will come later. This wing includes pediatric, surgical, medical and isolation rooms.

Take 135,000 bricks, 46,000 cement blocks, about 800 yards of concrete, 172 doors and 84 windows, throw in some 60 men, sheafs of architect's plans, hundreds of hours of preliminary groundwork by volunteers, divide evenly over nine months of construction (part of it winter) and you'll end up with a building valued at \$543,652—the new Milton District Hospital.

These are just a few of the little-known facts about Milton's new 62-bed hospital which is currently underway at the No. 10 sideroad—Bronte Street site. The contractor, Louis Donolo (Ontario) Limited of Toronto, hope to be able to move out by the end of June or early in July. Grand opening is slated for a month or two after that.

Campaign Is On

A financial campaign is now being conducted by the board of directors to bring in \$114,000, in outstanding pledges from the residents of Milton, Trafalgar, Burlington, Nassagaweya and Esquesing whom the hospital will serve.

Including a south, east and west wing as the central administrative section, the T-shaped hospital is an overall 412 feet long and 244 feet deep.

The central section, which houses the lobby and offices for records, administrator, supervisor of nurses and board is 45 by 81 feet.

Two Operating Rooms

Directly behind is the south wing, 125 by 93 feet, which includes obstetrical, two nurseries, two delivery rooms, central sterilizing, two operating rooms and the air conditioning room. On the west is the 132 by 48 foot wing which holds pediatric, surgical and medical, and isolation area.

The east wing has pharmacy, laboratory, kitchen and dining room, receiving, laundry, boiler room, morgue and autopsy, X-ray and emergency sections. It is 186 by 58 feet in dimension. Three main corridors trail through the three outlying wings.

33,000 Square Feet

Overall area of the hospital is 33,000 square feet and 60 men are currently working there under Donolo and some 53 sub-contractors and their sub-contractors. To date the roofing, flooring and windows are about 50 per cent. completed while the exterior brick walls are done.

There are over 50 hospital-type beds plus several bassinets to make up the 62-bed total. It is designed for future expansion to a second floor and an elevator allowance has been made for future use.

Architect Clare G. Maclean, construction superintendent Len Nieberg of the Donolo firm, hospital administrator Don McCallum and building committee chairman David Green can be seen frequently at the site, poring over plans or discussing minor problems which crop up.

Many Features

Special features are many in Milton's new hospital. For instance there's a carport over the emergency entrance with a plastic type ceiling. The front entrance will be a large glass verandah of steel and aluminum construction. Corridors are being done in shiny spectra-glaze blocks, while the floors are five inches of solid concrete which may be covered by tile. The kitchen features a red quarry stone floor. In any hazardous areas, floors are of black conductive cement.

Oxygen and suction are piped to every room and the same facilities drop from the ceiling in the operating rooms. There is one air conditioning room which contains the equipment for controlling air conditioning that is provided in the central sterile, the operating room and delivery rooms.

The dining room, facing No. 10 sideroad from the east side of the main lobby, contains a floor-to-ceiling picture window measuring 22 feet by nine feet, six inches.

First Trouble

First real difficulties in the construction of Milton District Hospital came last week in two separate incidents.

Wednesday evening a truck backed into a wall on the south side of the building and ruined a piece of brickwork 27x12 feet. It will have to be torn out and replaced.

Then Thursday evening's heavy rains dripped through the partially-completed roof and spoiled the finish on 3,500 square feet of newly-poured concrete floors. However, workmen refinished the cement to its proper shape on Friday morning and little loss was sustained.

It takes 10 inches of snow to equal an inch of rain.

NO STABILITY

Purchasing power is not increased by wage increases unless they are accompanied by increases in productivity and stable prices.



The diamond, the most precious of all gems, is also the simplest, for it is composed of only one element—pure carbon. Diamonds are so valuable because of their hardness and their reflection of light, in addition to their beauty. Eighty per cent of all diamond production is used by industry.

SEZ

CONFUCIUS

Bum used car is like oversize underwear, work velly hard to keep it up, but always fall down on person at inopportune moment.

BUY WITH CONFIDENCE — BUY A USED CAR THAT WON'T LET YOU DOWN AT

REED

MERCURY-METEOR
MILTON

GLASSLYNER MUFFLERS

MADE IN CANADA

QUALITY BUILT . . . AND PRICED TO FIT YOUR POCKET BOOK
NOW AVAILABLE AT JOHNSON BROS. GARAGE

CHEVROLET AND PONTIAC	FORD AND METEOR
1950 - 1951 \$ 6.25	1949 - 1954 \$ 7.25
1954 - 1958 8.50	1955 - 1956 9.25
	MONARCH AND MERCURY
	1954 - 1955 \$11.95
BUICK	DODGE AND PLYMOUTH
1954 - 1955 \$15.00	1949 - 1955 \$ 8.50
	1955 - 1958 9.25

- ✓ Check the Advantages of Glasslyner Mufflers -
- ✓ Greatly Reduced Back Pressure
- ✓ Lower Operating Temperature
- ✓ Less Inner Condensation

GUARANTEED Against Defective Material and Workmanship For 90 Days From Installation.

Johnson Bros. Garage

AUTHORIZED CHRYSLER · PLYMOUTH · FARGO DEALER

MAIN ST. MILTON TR 8-9942

CO-OP FED CHICKS

ALWAYS GET OFF TO A FLYING START

WHEN FED ON
CO-OP 20% CHICK STARTER
FORTIFIED
WITH ALL THE REQUIRED VITAMINS AND MINERALS
AVAILABLE
IN MASH OR CRUMBLE FORM

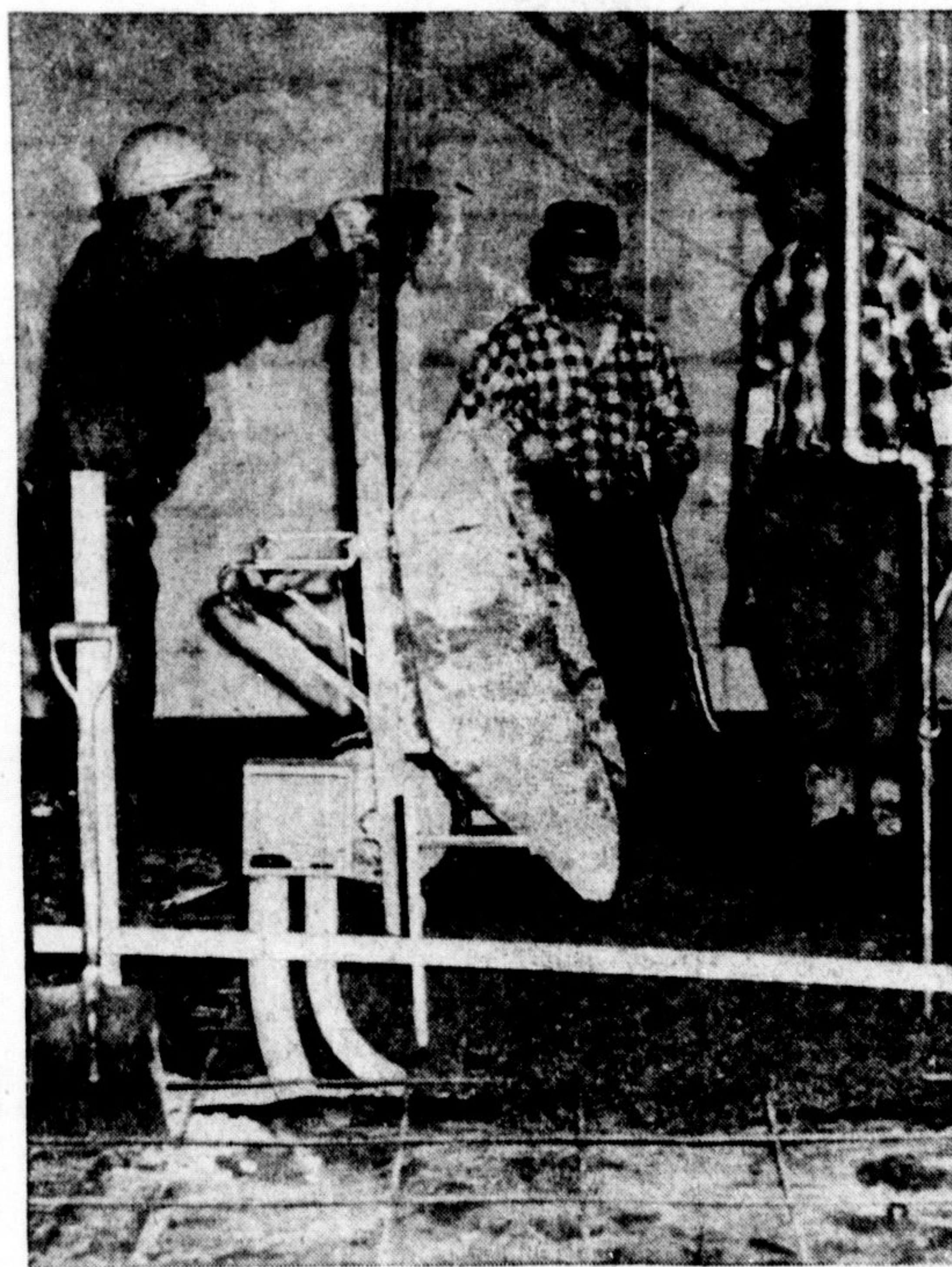
ALSO CONTAINS ZOLINE

CALL US TODAY

Halton Co-Operative Supplies

MILTON TR 8-2391

GEORGETOWN TR 7-2271



Pouring cement in the central section of the building which is rapidly rising on No. 10 sideroad just off Bronte Street.

SEED GRAIN

In New Jutes -- Treated

RODNEY AND GARRY OATS
Reg. No. 1 \$1.45 Bus.
Commercial \$1.30 Bus.

MONTCALM AND BRANT BARLEY
Commercial \$1.85

HORNBY FEED MILL

SEED CLEANING MASTER FEEDS
D. DOWNS - - TR 8-4897