

Blast Gas Pipeline Through Wilderness

Across the rugged wildness of northern Ontario and under its swift rivers, through tourist resorts and built-up areas, even through the site of the plant producing the dynamite used to blast its path, the last section of Trans-Canada pipeline is being laid. It's one major construction project of an era which abounds in big jobs but for the most part the work has gone on without the fanfare usually attending such accomplishments.

Pipeline construction in Canada actually dates back to the building of the transcontinental railways in the last century — achievements themselves made possible by the development of dynamite, a far more efficient explosive than the black powder it replaced. But it was not until the discovery, a decade ago, of vast reserves of oil and natural gas in western Canada that it gained major status. By 1957, a year which saw more than 2,000 gathering and transmission lines laid, a cross-country system of pipelines was well under way.

Gap Still Open
At the end of the year, the Trans-Canada pipeline was about 60 per cent complete: 1,283 miles from the Alberta border and the 308 miles from Toronto to Montreal. The northern Ontario gap remained to be closed.

Preparation of the 1,250-mile pathway from the Lakehead to Toronto — clearing of the right-of-way and blasting of an eight-foot deep trench in which the pipe is to be laid — is being done in "spreads" or sections of approximately 100 miles by a dozen different contracting companies. While these spreads are joined up late this fall, the Trans-Canada pipeline will be a reality and western gas will flow to the industrial east.

The total amount of explosives being used is well in excess of the 2,750,000 pounds used to eliminate Ripple Rock as a navigational menace but none of the shoals, even the underwater ones, is as awe-inspiring. And as at Ripple Rock, there are problems to be overcome — an average of about one a mile over the route or about 1,250 in all.

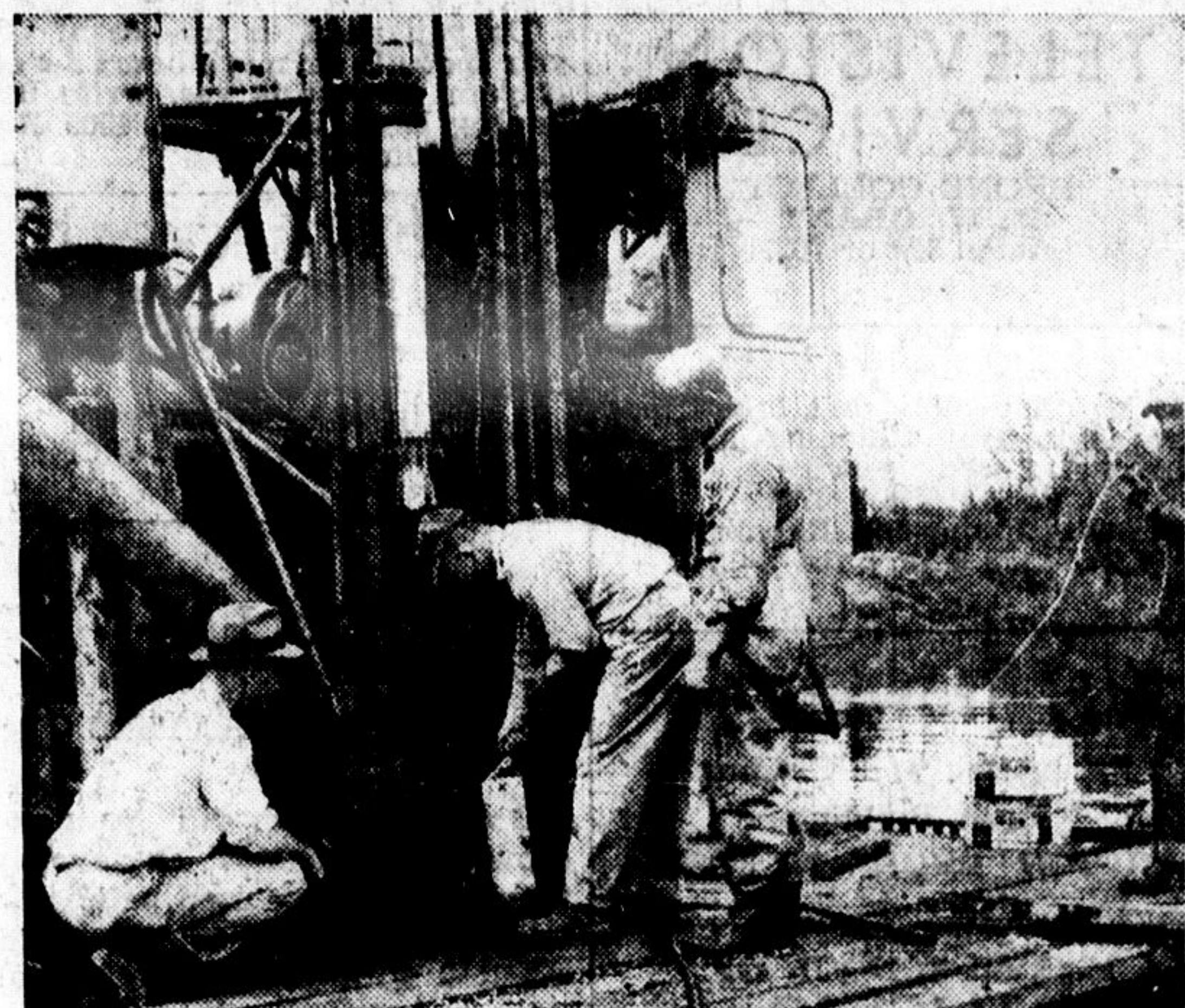
Tricky Operations
Blasting of the trench in the bed of such Ontario rivers as the Kapuskasing, French and Ground Hog, rivers 400-600 feet wide and up to 30 feet deep, is one of the trickiest operations a contractor or explosives engineer can be called upon to carry out. The best evidence of their ability to surmount these problems is the fact that construction is right on schedule.

The Ground Hog river crossing at Fauquier, Ont., near Kapuskasing, is an example. A 430-foot trench, capable of enclosing the pipe, had to be blasted in the river-bed. The drilling subcontractors, Ontario Rock Drillers Limited and the explosives suppliers, Du Pont of Canada, pooled their experience and resources. Some 14,000 pounds of an explosive with special underwater detonating qualities (Hi-Velocity 60 per cent gelatin) were lowered cartridge by cartridge into six-inch holes drilled into the rocky bottom, 20 feet below at mid-stream. In a matter of seconds the blast provided a trench some 460 feet long, eight feet deep and eight feet wide.

Heard Their Work

In direct contrast was the crossing of the Don river near Toronto. The problem there was to prevent the slightest damage to buildings in that built-up area, so explosives engineers used the millisecond delay technique to lessen the shock waves firing only two or three small underwater shots at a time.

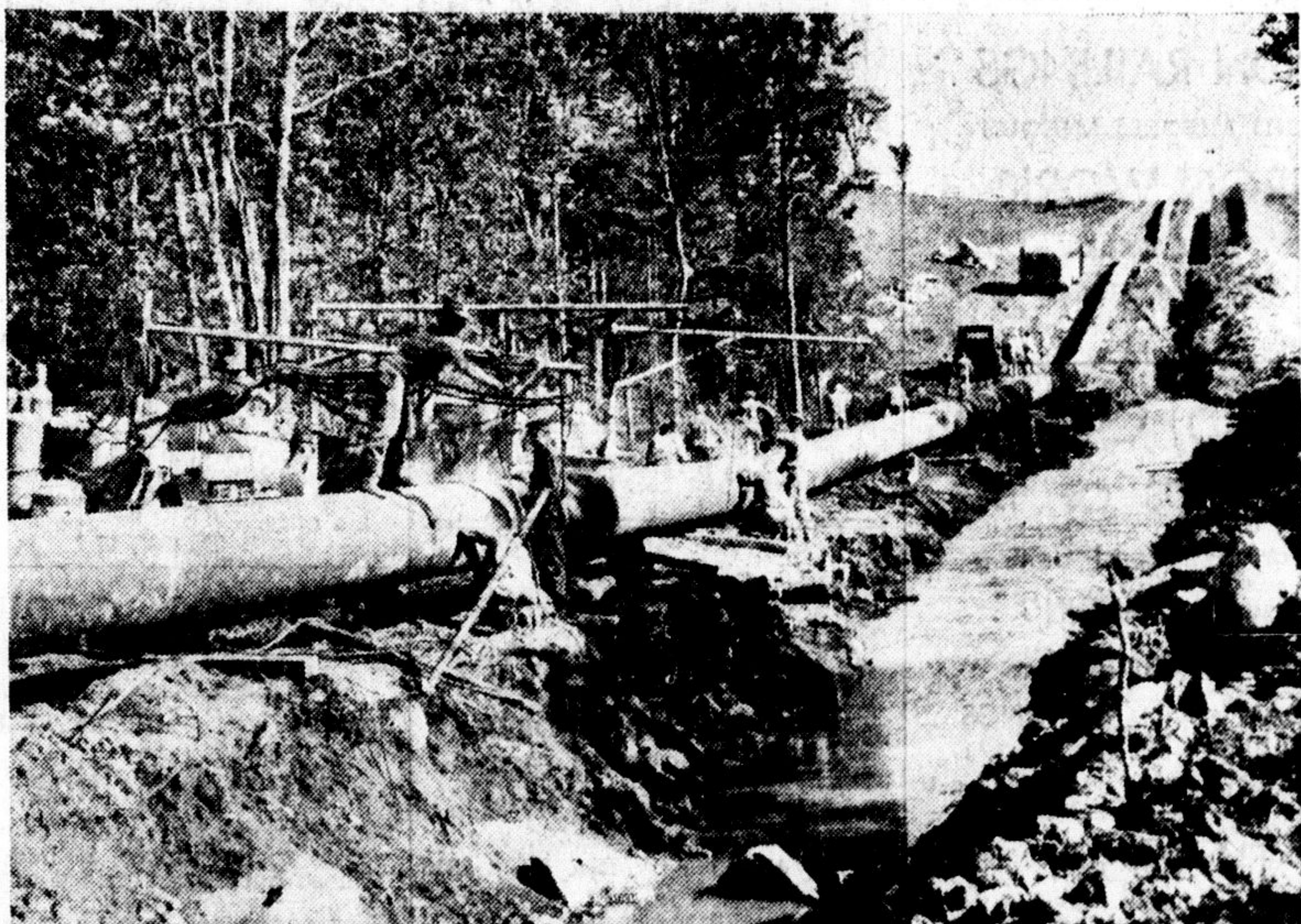
But if the construction project has its problems, it also has its unusual situations. Near North Bay, the contractors, Morrison-Shivers Limited, cleared a right-of-way



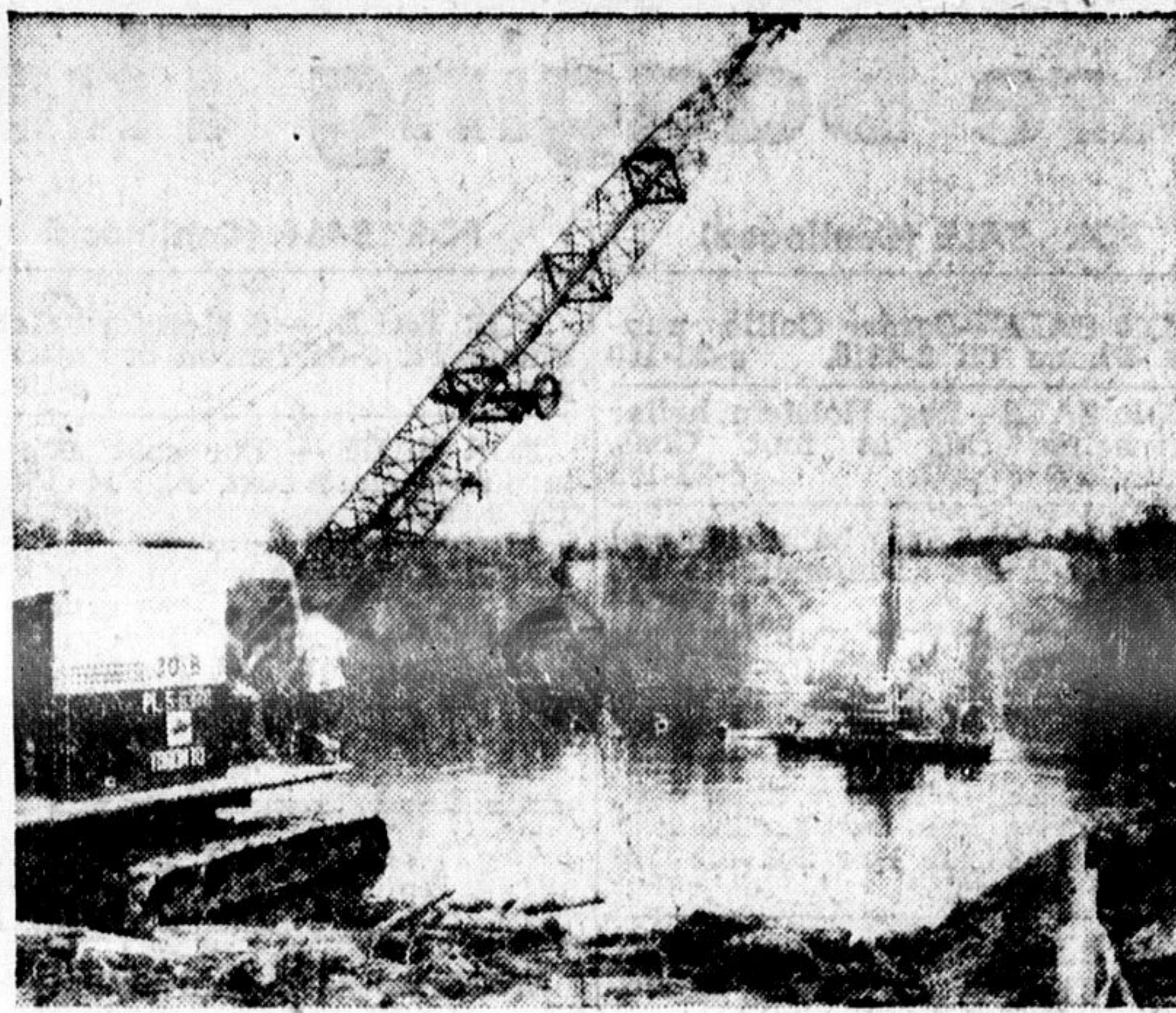
PRESIDENT W. T. Copping of Ontario Rock Drillers (left) watches as Lloyd Raney, Du Pont of Canada explosives engineer, lowers a 15-pound cartridge of explosives into a hole drilled in the bed of the Ground Hog river at Fauquier, near Kapuskasing.

near the former home of the Dionne quintuplets at Callander and then right through the site of Nipissing Works, a Du Pont of Canada plant which produced the

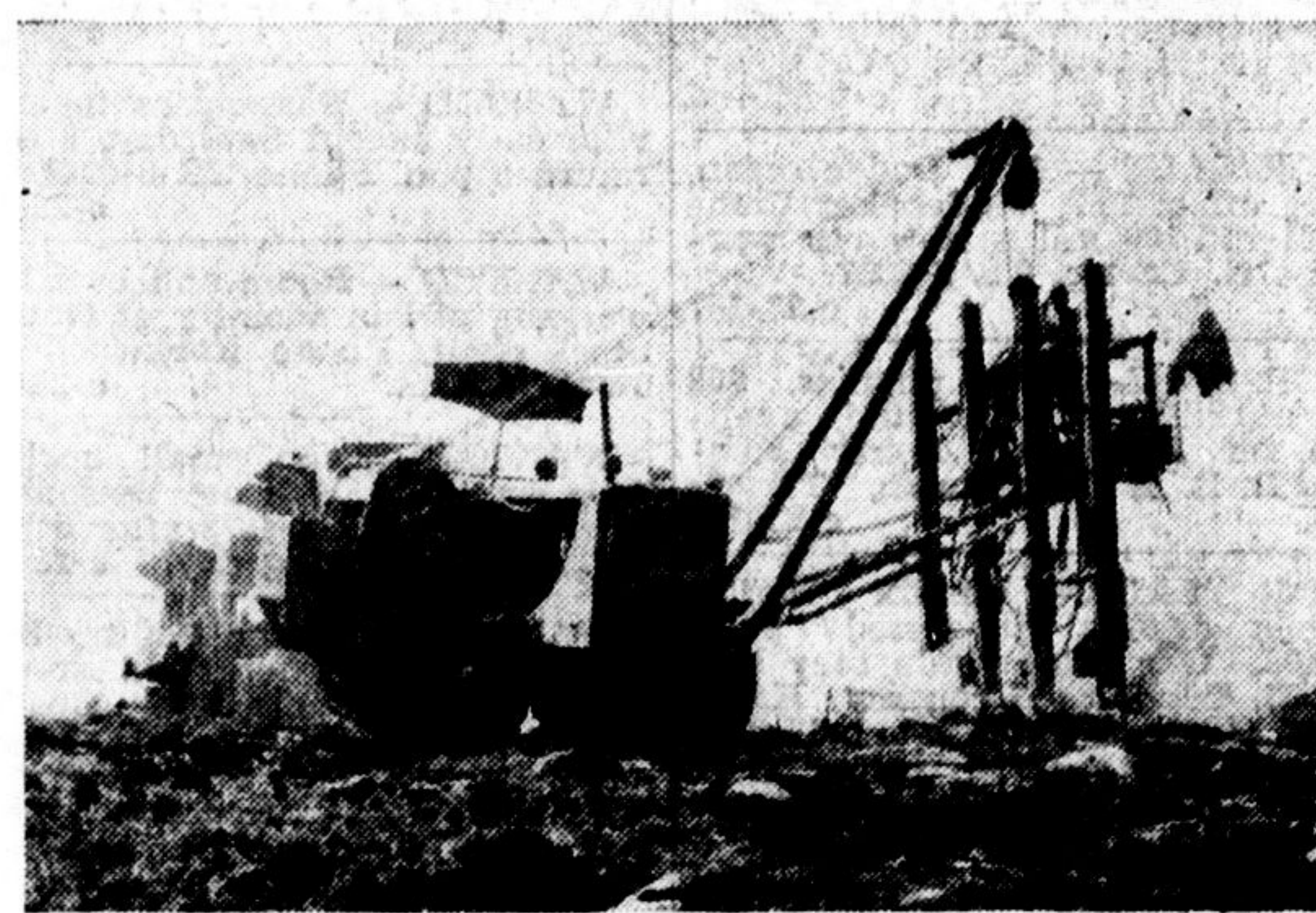
explosives being used to blast the trench. At their jobs, the plant's 190-odd employees could hear the distant boom of the dynamite they had turned out a few days before.



ACROSS THE RUGGED COUNTRYSIDE of Northern Ontario, over hills and under rivers, the Trans-Canada pipeline is being laid simultaneously in a number of "stretches" or sections. This photograph shows laying of the 30-inch pipe near North Bay.



ON LAND AND UNDER WATER work goes on. A drag line operates on the bank of the Ground Hog river with the barge in the background drilling six-inch holes at five-foot intervals in the bed of the river, 20 feet deep at mid-stream.



THE LATEST IN EQUIPMENT as well as technique is employed in clearing and blasting the pipe-line right-of-way. This "quad" drill, for example, is capable of drilling four holes simultaneously. The holes will be loaded with explosive and fired to provide an eight-foot deep trench for the pipe.

See Strong Exhibit Of Jerseys at Royal

The Jersey breeders in Halton county are getting on their Jersey armour for the coming Royal Winter Fair. The exhibit will be headed by the well known herd of Maurice Beaty, Lindale Farms, Milton.

It is also expected that a strong exhibit from Featherstone Bros., Ken Ella and Sons, 4-H members William Alexander and Ernest Alexander of Norval, will also be in competition. Ernest has one of the great heifers on the continent

this year, having been reserve junior champion at the International Dairy Show, Chicago, in the 4-H junior show and second in Open competition in a very strong class. Their father, Mac Alexander, is also showing.

—Total damage was estimated at \$200 when a car driven by Lawrence Cargill of 82 King St., Milton, went off the road and into the ditch on the Milton Heights road early Saturday morning. Mr. Cargill was unhurt.

Learn and observe the Red Cross rules of water safety.

ALLEN'S Apple Juice

2 SMALL TINS

25c

GOOD LUCK - - - 29c

SOLO - - - 28c

LUX

BEAUTY SOAP

3 BATH SIZE BARS

43c

YOU SAVE 8c

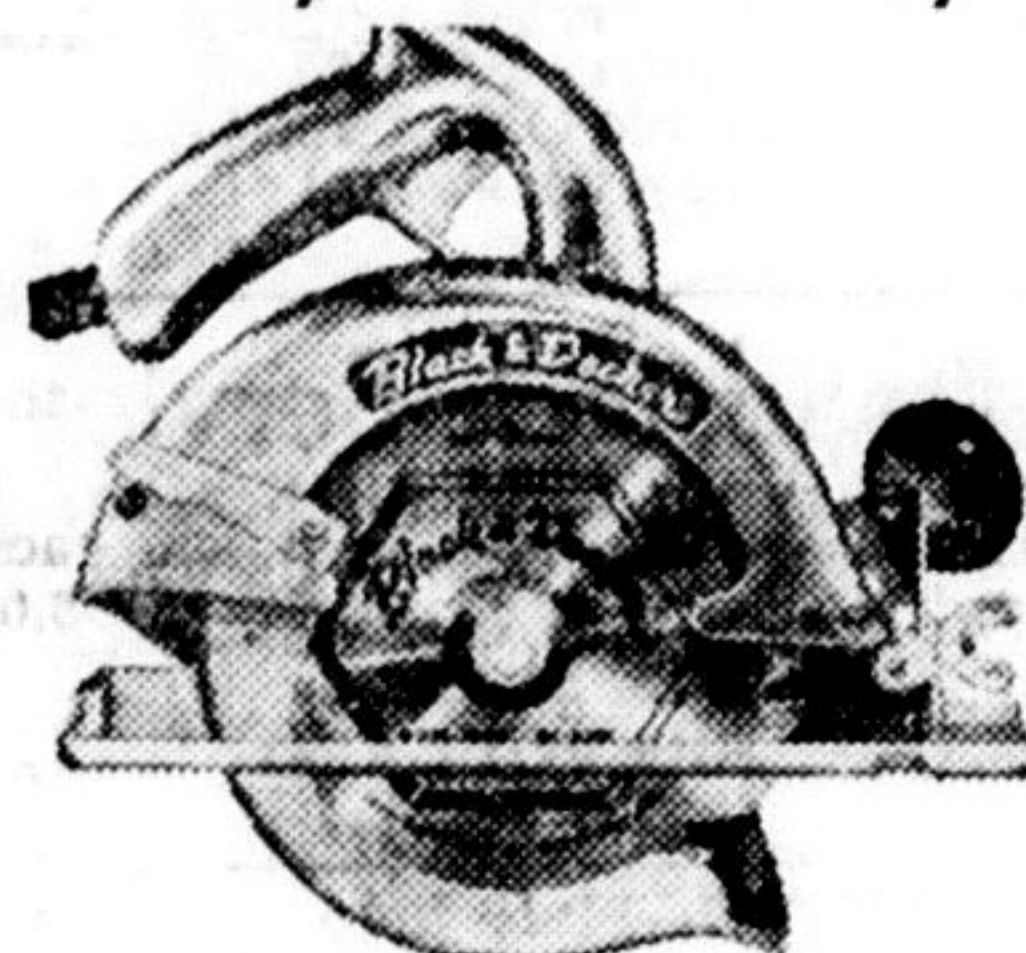
MOTHER PARKER'S

COFFEE

89c lb

LEDWITH'S FOOD MARKET

Don't miss the **POWER TOOL CLINIC** Friday and Saturday



ON THE FAMOUS BLACK & DECKER LINE Get present tools checked or serviced at **MILTON HARDWARE** 227 Main St. E. Milton

JIM BAILEY'S



SERVICE Ontario St. at Base Line

B-A

PERMANENT TYPE **ANTI-FREEZE**

\$2.79 Per Gallon

Don't Be Caught Cold **WINTERIZE NOW!**



Oakville and District Labor Council

DANCE

SATURDAY, OCTOBER 25, 1958

STEELWORKER'S HALL

Pine Street, Milton

REFRESHMENTS

Admission - - - \$2.00 Couple

TOWN OF MILTON

CLERK'S NOTICE OF FIRST POSTING OF VOTERS' LIST

Voters' List, 1958, Town of Milton, County of Halton

NOTICE IS HEREBY GIVEN that I have complied with Section 9 of the Voters' List Act, 1951, and that I have posted up at my office in the Municipal Building, Milton, on the 23rd day of October, 1958, the list of all persons entitled to vote in the said Municipality at municipal elections, and that such list remains there for inspection.

And I hereby call upon all voters to take immediate proceedings to have any omissions or errors corrected according to law, the last day for appeal being the 7th day of November, 1958.

Dated at Milton this 23rd day of October, 1958.

J. COSTIGAN, Clerk, Town of Milton

YOU ARE INVITED TO TAKE ADVANTAGE OF THESE SERVICES

- DEPOSITS** 3 1/2% interest is paid on Deposits and you may withdraw your money anytime. \$5.00 deposited weekly in five years amounts to \$1,417.75. Our offices are open from 9-4.30 and Fridays from 9-6.30.
- INVESTMENTS** 4 1/2% interest is paid on Guaranteed Investment Certificates issued for 1 or 2 years. 4 3/4% interest is paid on Certificates issued for 3, 4 or 5 years. Issued in amounts from \$100. to \$25,000. Interest is paid by cheque half-yearly. Accumulative certificates also available \$709.79 in 5 years accumulates to \$1,000.
- PENSION PLANS** Join the Halton & Peel Trust & Savings Company Pension Plan for the Self-employed and save on your Income Tax. Ask for Folder.
- WILL PLANNING** You are invited to use our Will Planning Service. Our Officers will be pleased to estimate your Succession Duties and may suggest how best to keep them to a minimum.
- AGENCY SERVICE** If you would like to free yourself from the worry of looking after your investments, mortgages etc., you may do so under an Agency agreement with the Trust Company. The fee is moderate and is allowed as a deduction on your Income Tax.

FURTHER INFORMATION ON REQUEST

HALTON & PEEL TRUST & SAVINGS COMPANY

112 Church St. Oakville VI 4-3216

11 Queen St. E. Brampton GL 1-3365

451 Brant St. Burlington NE 4-1028



THIS BLAST at the Ground Hog river used about 14,000 pounds of a type of dynamite (Hi-Velocity 60 per cent gelatin) with special underwater detonating qualities to provide a 460-foot long trench, eight feet deep and eight feet wide, in the bed of the river.

expert ELECTRICAL REPAIRS

For REPAIRS AND INSTALLATION

- COMMERCIAL
- RESIDENTIAL

Call **Featherstone ELECTRIC** TR. 8-6378 MILTON

"PERCE STRINGS" by CHARLIE & FRANK

JOHNSON BROS. GARAGE AND YOU'LL GET EXACTLY WHAT YOU WANT.

FOR BETTER USED CARS And Reliable Automotive Repairs You Can't Go Wrong

CHRYSLER PLYMOUTH FARGO APPROVED SERVICE PLANT

JOHNSON BROS. GARAGE We May Not Sell the Most - But We Sell the Best

YOUR CHRYSLER-PLYMOUTH-FARGO dealers B.F. GOODRICH TUBELESS TIRES

for BETTER USED CARS Phone MILTON TR.8-9942