

LOWVILLE

Dr. Hockin Spent 20 Years in China

A number of ladies from the United church attended the W.A. meeting at Freelon on Monday and the W.M.S. Presbyterial at Millgrove on Tuesday.

The W.M.S. held a special service in the local church last Sunday morning with Dr. Katharine Hockin of United Church Training School, Toronto, as speaker. Dr. Hockin has had a broad experience, having spent 20 years as a missionary in China, several years among Canadian Indians and at present is teaching Missions and Christian Education. She presented her subject "Broadening Missionary Horizons" in a very interesting and gracious manner.

Mrs. Featherstone Colling, president of the Afternoon Auxiliary, assisted in the service. The choir rendered a number and Mrs. Swallow an impressive solo, which were much in keeping with this missionary service.

Dr. Hockin was the guest of Mr. and Mrs. F. Colling and family.

The Trend Is To Chiropractic

Do You Know?

What is Allergy? Why do some people have unpleasant symptoms after exposure to certain foods, dusts, pollens, etc? The answer is that their individual nervous systems are unduly sensitive to these substances; being hypersensitive these people are irritated by certain everyday substances which do not affect normal, healthy people, and react to this irritation with Asthma, Hay Fever, Eczema, Hives, etc. In the past, people tried to ascertain the offending substance and eliminate it from their daily life. This is often very difficult and may severely restrict the freedom and enjoyment of life.

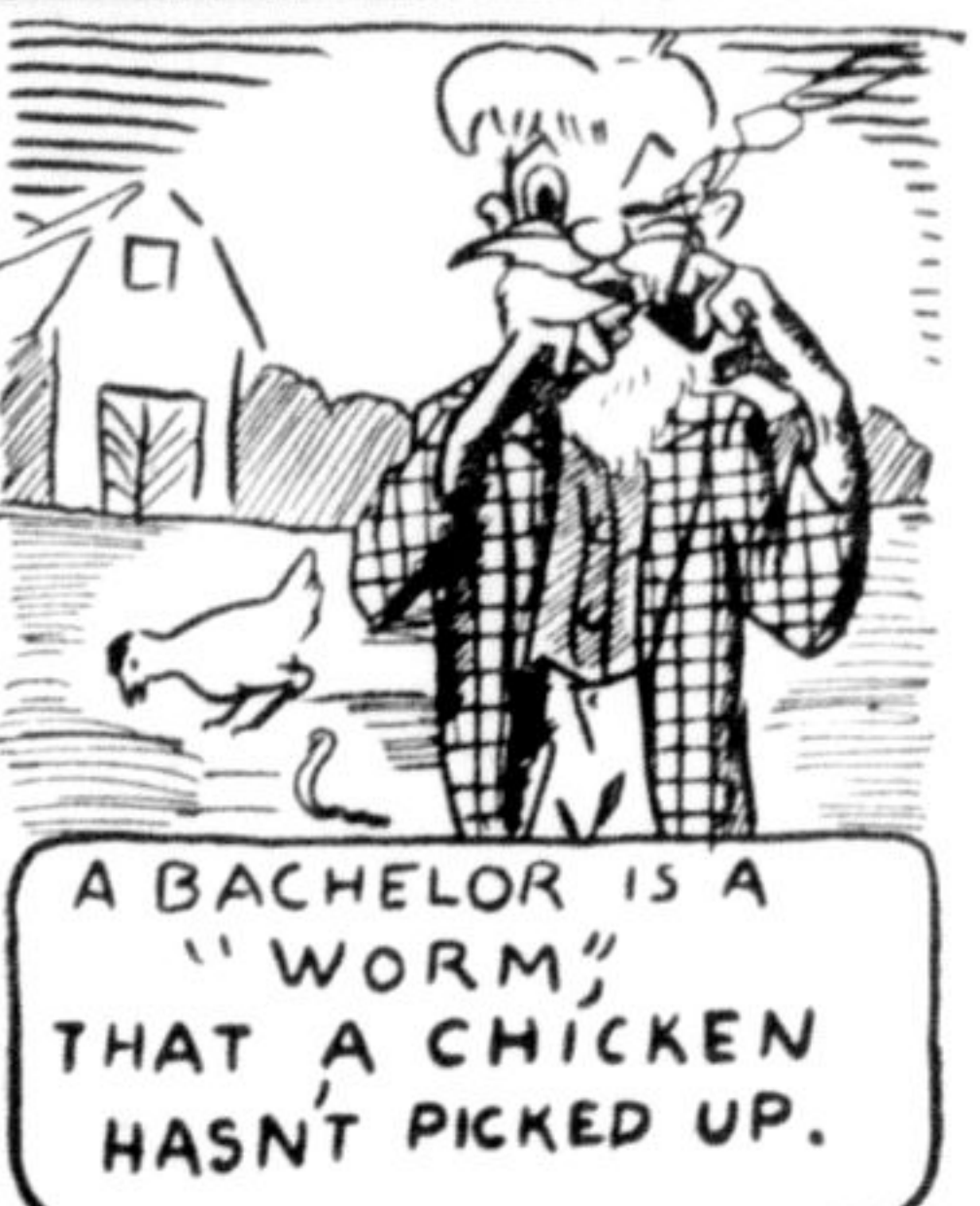


W. Riddell, D.C. Headache, Eczema, Hives, etc. In the past, people tried to ascertain the offending substance and eliminate it from their daily life. This is often very difficult and may severely restrict the freedom and enjoyment of life.

The Chiropractor approaches the problem more directly. He tries to find out why the patient's nervous system is abnormally sensitive. Experience has shown that this is most often due to spinal cord irritation occurring just below the skull.

The Chiropractor is trained and competent to locate and remove such irritation to the nervous system, and Health follows: the unpleasant symptoms disappear and the patient is free from restricted diets, seasonal incapacity and similar encumbrances.

UNCLE SED SEZ



A BACHELOR IS A "WORM" THAT A CHICKEN HASN'T PICKED UP.

McPHAIL ELECTRIC

INDUSTRIAL - COMMERCIAL DOMESTIC - WIRING OIL BURNER SALES-SERVICE

PH. TR. 8-9513 MILTON 66 CHARLES ST.

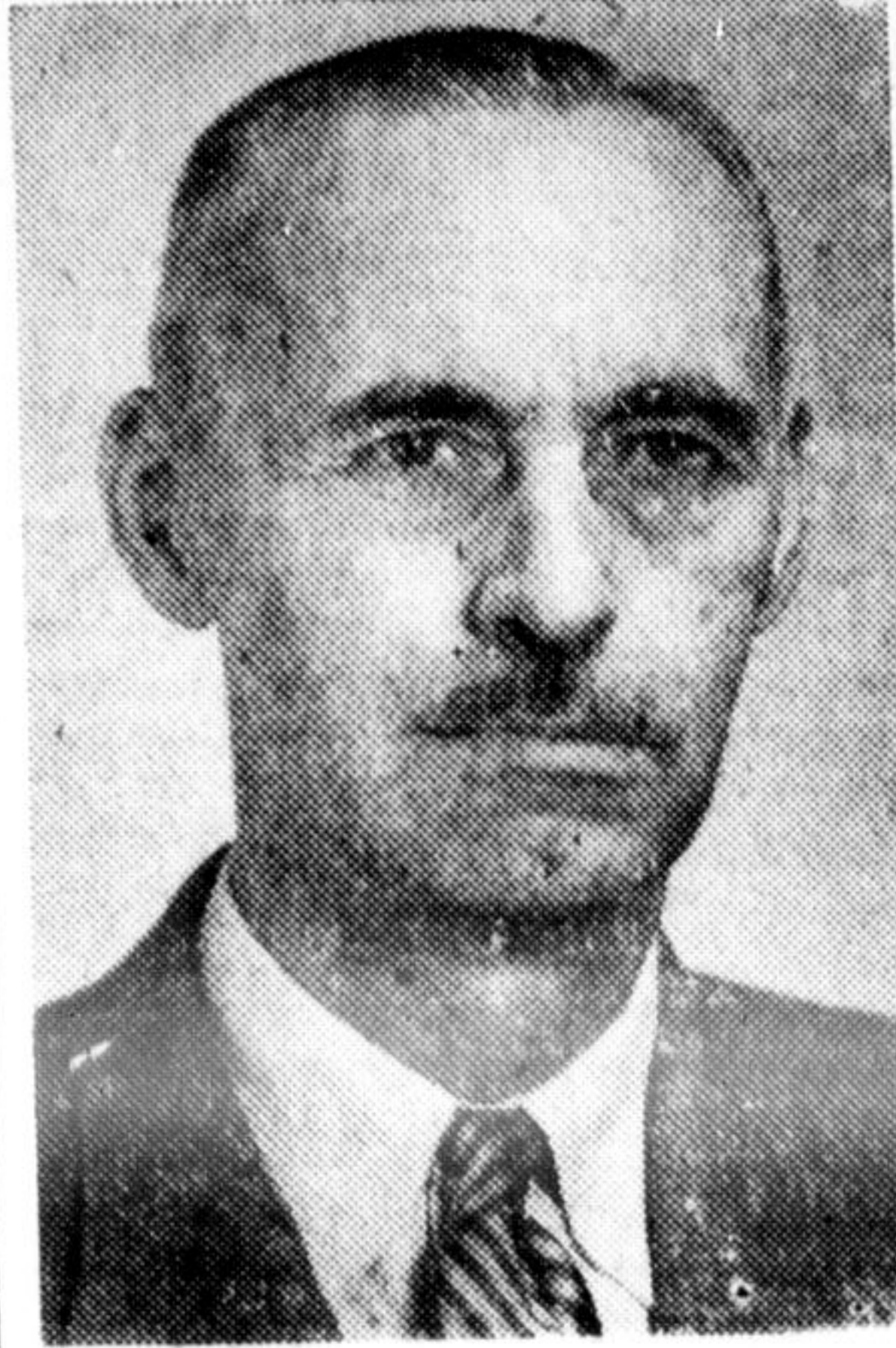
"I-SCREAM-KIDS"

YOU CAN COMB THE COUNTRY, BUT YOU WON'T FIND ANY ICE CREAM BETTER THAN THAT OF MILTON DAIRY



For prompt and courteous service

PHONE TR. 8-9971



J. V. LUDGATE has been appointed head of the Municipal Roads Branch of the Ontario Department of Highways, announced by Hon. James N. Allan, Minister of Highways. Mr. Ludgate has been in charge of Municipal Roads Section of the Chief Engineer's Branch and this Section has now been instituted a separate Branch in the Department organization.

LOCAL NEWS

A meeting is being held in the near future by the Arena Committee to determine the summer activities of the arena. Manager Art Higgins said Monday that there is a possibility that wrestling might be one of the summer highlights.

—So this is Spring? Friday's snow and Monday's hail made us wonder, but Saturday's rain confirmed beliefs that this is the season when rain is a frequent visitor.

—Margaret Whaley of Campbellville, who is chairman of the Campbellville Bahai groups, was named reported for the Bulletin.

Since the end of World War II Canada has advanced more than four billion dollars in financial aid to foreign countries. Gifts to other countries have amounted to \$1,856,845,000, or nearly half the foreign aid total in the period.

CLEARING AUCTION SALE

Of Livestock, Farm Machinery, Feed, Furniture, etc.

The undersigned has received instructions from

MELDRUM STARK

To sell by public auction at his farm, lot 4, con. 3, first line, Esquing, 1 1/2 miles north-east of Milton, on

SATURDAY, APRIL 21

Commencing at 12.30 o'clock sharp, the following: COWS AND SHEEP—1 Guernsey cow, due in June; 1 Holstein cow,

Hold Euchre, Dance To Aid Hospital Fund

The Drumquin Institute held a euchre and dance in Stewarttown hall on Friday evening with proceeds for the Milton District Hospital.

Prize winners for the euchre were ladies, Mrs. Neilson; men, Mr. Harry Pickett. The lucky spot dance was won by Mr. and Mrs. Lloyd Pickering. Lucky draw on a hamper of groceries was won by Mr. Charles La Riche.

Groups Meet

Bethel W.A. and W.M.S. held their April meeting at the home of Mrs. Ellison and Mrs. Alfred Ball. Mrs. Carlyle Featherston presided for the W.A. meeting which opened with a hymn. After the usual business period the meeting was closed.

Mrs. G. Brownridge presided for the W.M.S., opening with a hymn, followed by sentence prayers.

Three quilts had been made and quilted, these to be taken to the Scott Mission in Toronto.

Devotional was taken by Mrs. E. Ball. Musical numbers were given by Misses Margaret and Marlene Ball. Roll call was answered by the word Rejoice.

The study book was taken by Mrs. W. Ford, assisted by Mrs. Simpson. The meeting was closed and a social time enjoyed.

Pollock and Campbell

Manufacturers of HIGH GRADE MEMORIALS MEMORIAL ENGRAVING 62 Water St., North GALT Telephone 2048

bred in Dec.; 1 Holstein cow, bred in Jan.; 1 Holstein cow, freshened in Feb.; 1 Holstein cow, not bred; 1 Ayrshire cow; 3 calves; 8 ewes and lambs.

TRACTORS, IMPLEMENTS, ETC.—M.H. 22 tractor with 3 point hitch, like new; M.H. 7 ft. power mower; M.H. 2-furrow tractor plow, like new; M.H. 16-plate disc; 2 drills; M.H. 6 ft. Clipper combine with motor; Ford Ferguson tractor and 2-furrow plow; hydraulic Ferguson disc; hydraulic bucket for Ferguson tractor; 2 rubber tired wagons; cultivator; set of bob sleighs; harrows; scufflers; chopper; fanning mill; set of scales; steel land roller; brooder house; dipping tank; barrels; chains; electric brooder; forks, shovels and numerous other articles.

HAY AND GRAIN—10 ton of good baled mixed hay; 200 bus. of leaver oats.

HOUSEHOLD GOODS—White enamel kitchen range; large expansion table; bookcase; glass cupboard; Congoleum rug; odd tables and chairs; dressing table; folding bed; 3 walnut steel beds; couch; wicker rocker and armchair; 1 white dresser; wash stand; rockers; 2 clocks; 2 rockers; 12 dining chairs; odd chairs; settee; chest-of-drawers; sideboard; 2 bedroom suites; rugs; 6 lamps; walnut table; piano; extension table; baby Astral refrigerator; electric 2-burner range; washing machine, 60 cycle; a lot of fancy dishes; trays; china tea set; mirrors; rugs; mats;

pictures; hanging lamps; heaters; cook stove; copper and brass tea kettle, over 100 years old; linens; beddings; kitchen utensils; and numerous other articles.

AUCTIONEER'S NOTICE: If you are interested in antique pieces, be sure and attend this sale. Farm machinery and livestock will be sold first, household effects approximately at 3 p.m.

TERMS: Cash settlement with clerk on day of sale

No reserve as farm is sold. Refreshments under Scotch Block Ladies' Institute.

HERB M. REINHART, Auctioneer, Snelgrove, phone Victoria 42r2. Geo. Currie, clerk. b-39-41

BULLDOZING

Loading - Hauling - Gravel Fill - Topsoil

Chas. H. Mitchell

CAMPBELLVILLE Phone TR 8-4892 Milton

BUILDING FOR SALE

OR RENT WITH OPTION TO BUY

70'x34'x14 1/2' brick and block construction. Show room and adequate parking space. Five room with bath, modern apartment above. Oil heating entirely automatic. Located on No. 7 Highway in town of Acton. Suitable for auto body or auto parts business, farm machinery or light manufacturing business.

For full particulars, contact

EDGAR BILTON, 785 ROCKWAY DRIVE, KITCHENER

OR PHONE SH 5-9541

Best performance in its field

... 173-Hp. to 225-Hp. V-8



TUDOR VICTORIA

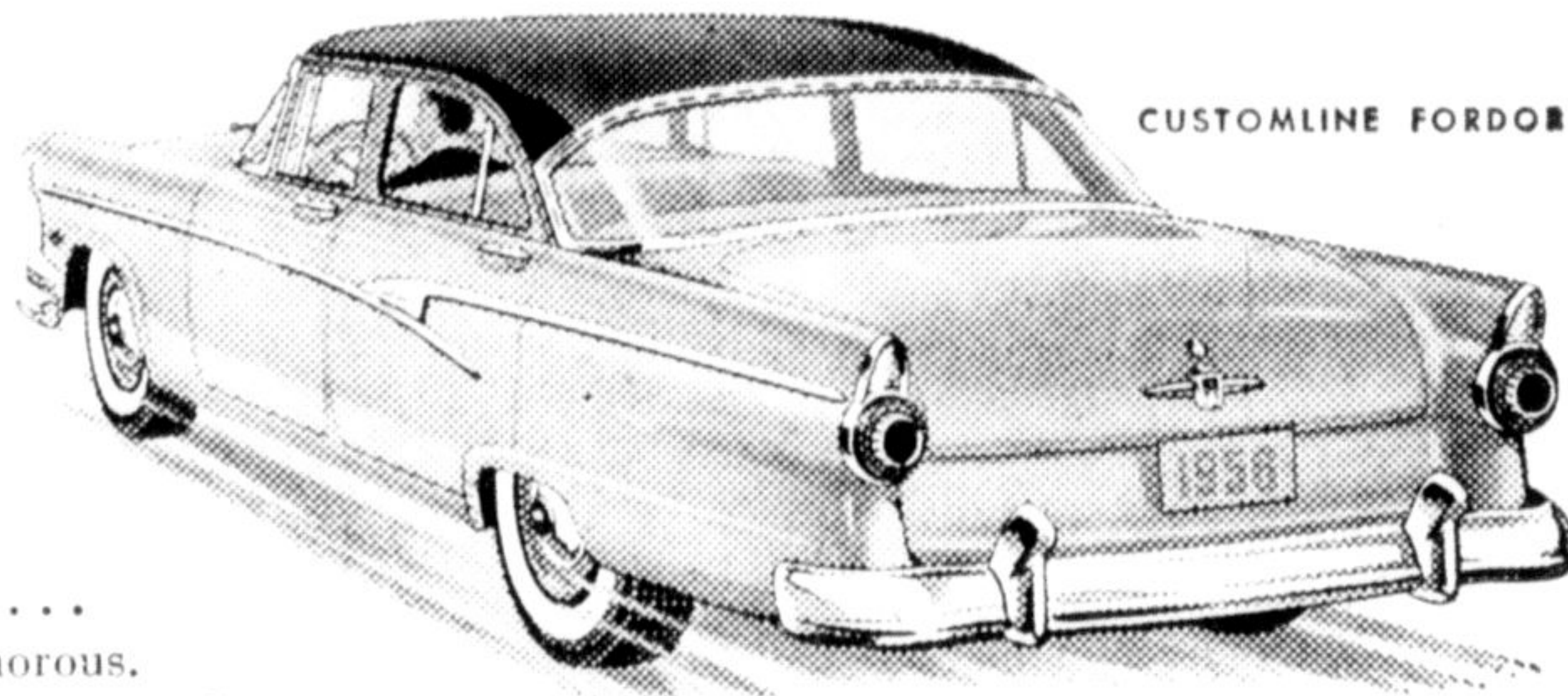
V-8 or SIX—a Ford with famous Fordomatic drive offers you the finest, most responsive power, the smoothest, easiest driving!

FORD V8

Smartest styling

... its trim lines inspired by the Thunderbird

Any way you look at it, you can see the unmistakable styling-inspiration of the Thunderbird in the '56 Ford... the same long, low, lithe silhouette, alive with the look of tomorrow! And Ford's big, roomy interiors feature trims and upholsteries that are unmatched for smartness and eye-appeal... all of them as practical and hard-wearing as they are glamorous. Ford is the family car that's Thunderbird-lovely, inside and out!

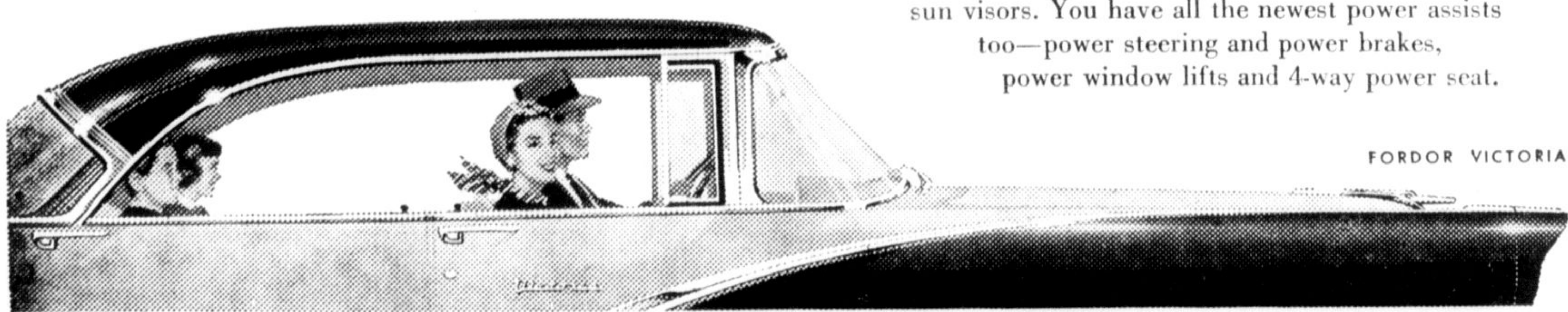


CUSTOMLINE FORDOR

Safest car in its field

with all the safety features of Lifeguard Design

Ford gives you and your family the extra peace-of-mind that goes with built-in safety—with safety steering wheel and safety-hold door latches, plus many other built-in safety features. And you can have (at moderate extra cost) Ford's safety seat belts and plastic padding for instrument panel and sun visors. You have all the newest power assists too—power steering and power brakes, power window lifts and 4-way power seat.



FORDOR VICTORIA

(Certain features illustrated or mentioned are "Standard" on some models, optional at extra cost on others.)

WE INVITE YOU TO SEE YOUR FORD-MONARCH DEALER... TAKE A DRIVE AND COMPARE!

STONEHOUSE SALES LIMITED

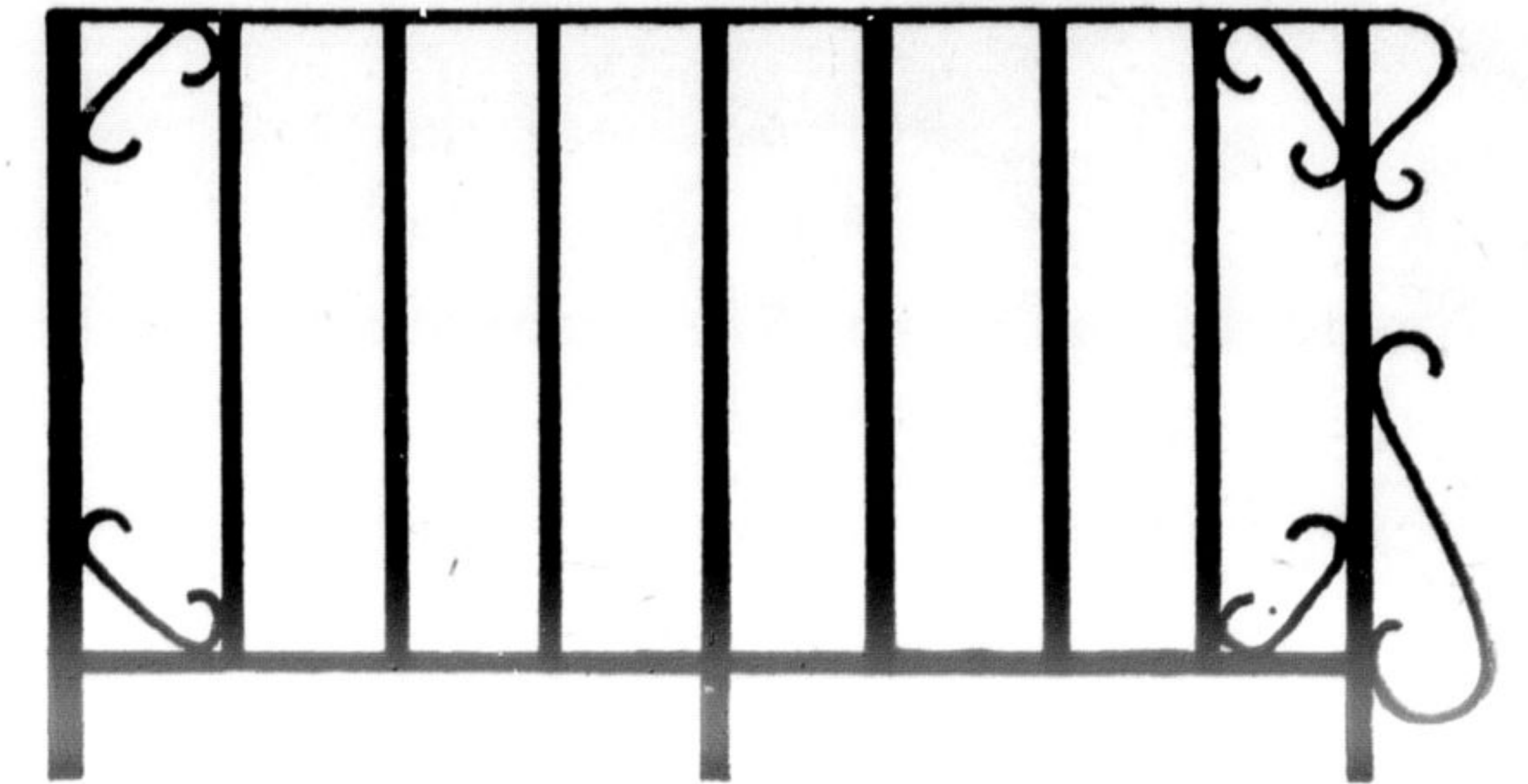
409 Main St.

MILTON

Tr. 8-9953

COUNT ON THESE SIGNS FOR THE BEST VALUES IN USED CARS AND TRUCKS

Iron Porch Railings



BILL KELLY TR 8-9880

Roxy FAMILY STYLE ENTERTAINMENT

MILTON Two Shows Nightly 7 p.m. - 9 p.m.—Matinee Sat. 1.30 p.m.

FRIDAY-SATURDAY Two Days Only APRIL 20-21

You're Never Too Young

this big comedy hit starring DEAN MARTIN JERRY LEWIS

Also Short and Color Cartoon HI KIDS! — Your Big Matinee Saturday at 1.30

MONDAY-TUESDAY APRIL 23-24

It is here at Milton—Big Special Attraction

TRIAL Adult

GLENN FORD DOROTHY McGUIRE

Also Color Cartoon

WEDNESDAY-THURSDAY APRIL 25-26

Two Big Days Only in CINEMASCOPE

Strange Lady in Town

Come to the Roxy Milton and see her GREER GARSON DANA ANDREWS

Also Color Cartoon

Coming 27-28—Two Hits

RETURN OF JACK SLADE in Cinemascope

Also THE BOWERY BOYS

Coming Soon—Big Special Attraction—ABOVE US THE WAVES

CARS are my Line



By IVAN SLESSOR

If you take a coil spring and step on it, it's obvious that the further you press it down the further it will jump when you let go.

Much the same thing happens when the piston of an automobile engine compresses the mixture of air and fuel into a tight little space in the cylinder before it is burned. In the past few years, automobile engines have been compressing the fuel-and-air mixture tighter and tighter (therefore being called high-compression engines) and we have heard more and more about compression ratios.

Eight years ago the average compression ratio in our cars was 7 to 1. Each seven cubic inches of air and fuel was compressed into one cubic inch before the spark plug ignited it. This year, the average is closer to 9 to 1.

This increase is important because high-compression engines give more power from a pound of fuel than low-compression engines. A high-compression engine gives more pick-up and greater speed but at the same time offers the seeming impossibility of greater economy, too.

Compression becomes important when it comes time for spring check-up. For if you have sticky valves or piston rings or leaky gaskets or several other faults, the car will lose the advantage of the compression the builder designed into it. You'll be wasting the power of today's high-octane gasolines designed for high-compression engines.

So a fundamental part of the spring check-up we'll give your car is a compression test. It will determine whether compression is up to par and whether compression in each of the cylinders is pretty well equal. You'd be amazed how much you can tell about a car from a compression check.

SEE THESE CARS TODAY AND EVERY DAY FROM 8 A.M. TO 9 P.M.

- 1954 OLDS SUPER 88 SEDAN with automatic transmission, etc. Beautiful two tone paint. Big car in a low price field.
- 1955 PONTIAC DELUXE TWO DOOR, a one owner unit with new car appearance.
- 1955 PONTIAC SEDAN. An economical operating unit with attractive appearance.
- A REAL GEM in a 1952 PLYMOUTH. Everything in immaculate condition. Very reasonable.
- 1949 FORD SEDAN. The buy of the year.
- 1951 CHEVROLET HARD TOP with power glide. A real buy for the sports-minded person.

Ivan K. Slessor

COPYRIGHT 1956 MILTON MOTOR SALES LTD.



MAIN ST. MILTON PHONE TR. 8-9923 serving you better... costing you less