

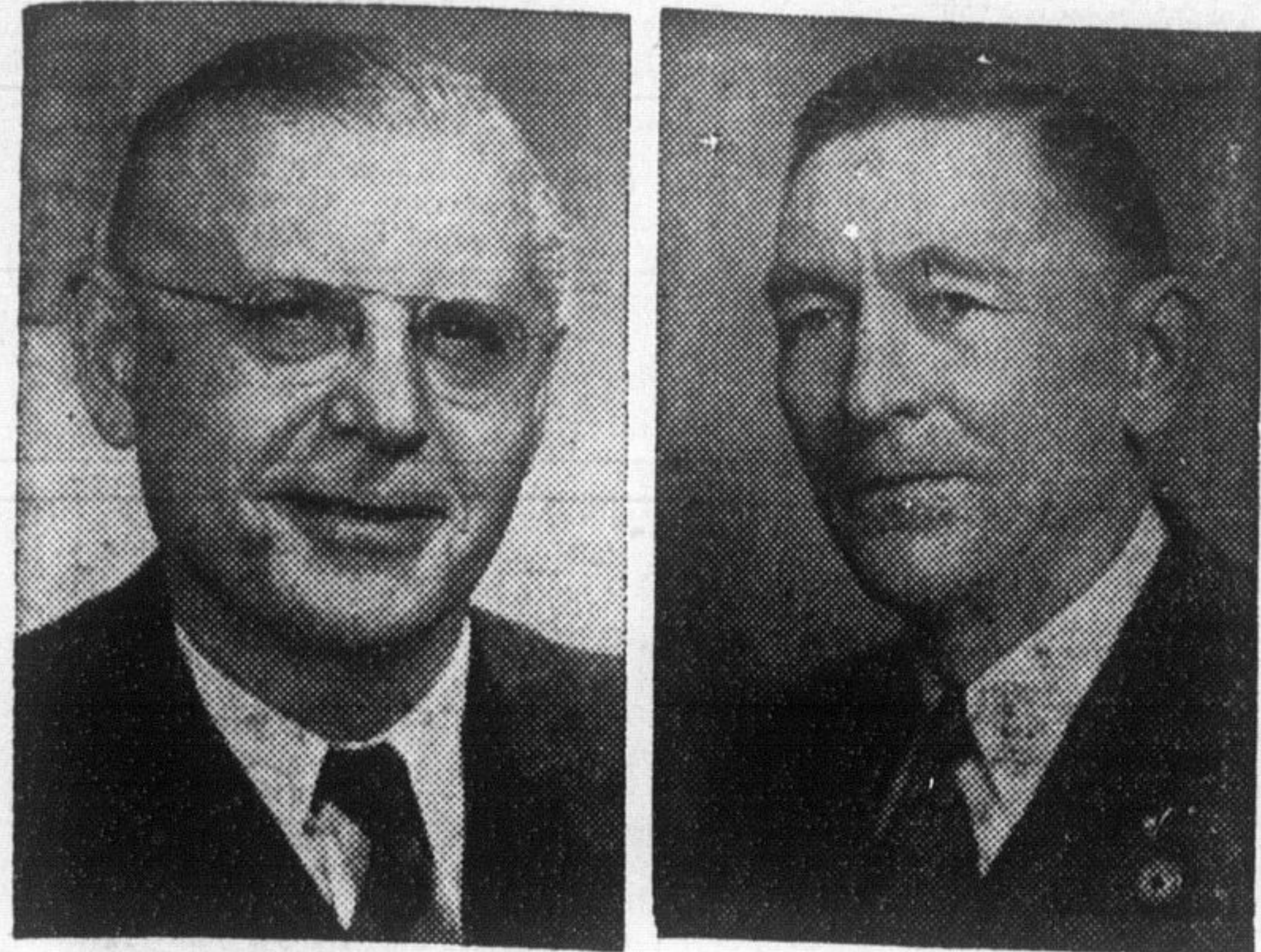
The Canadian Champion

Volume 92.—No. 24.

MILTON, ONTARIO, THURSDAY, NOVEMBER 15th, 1951

Ten Home Print Pages—Six Cents

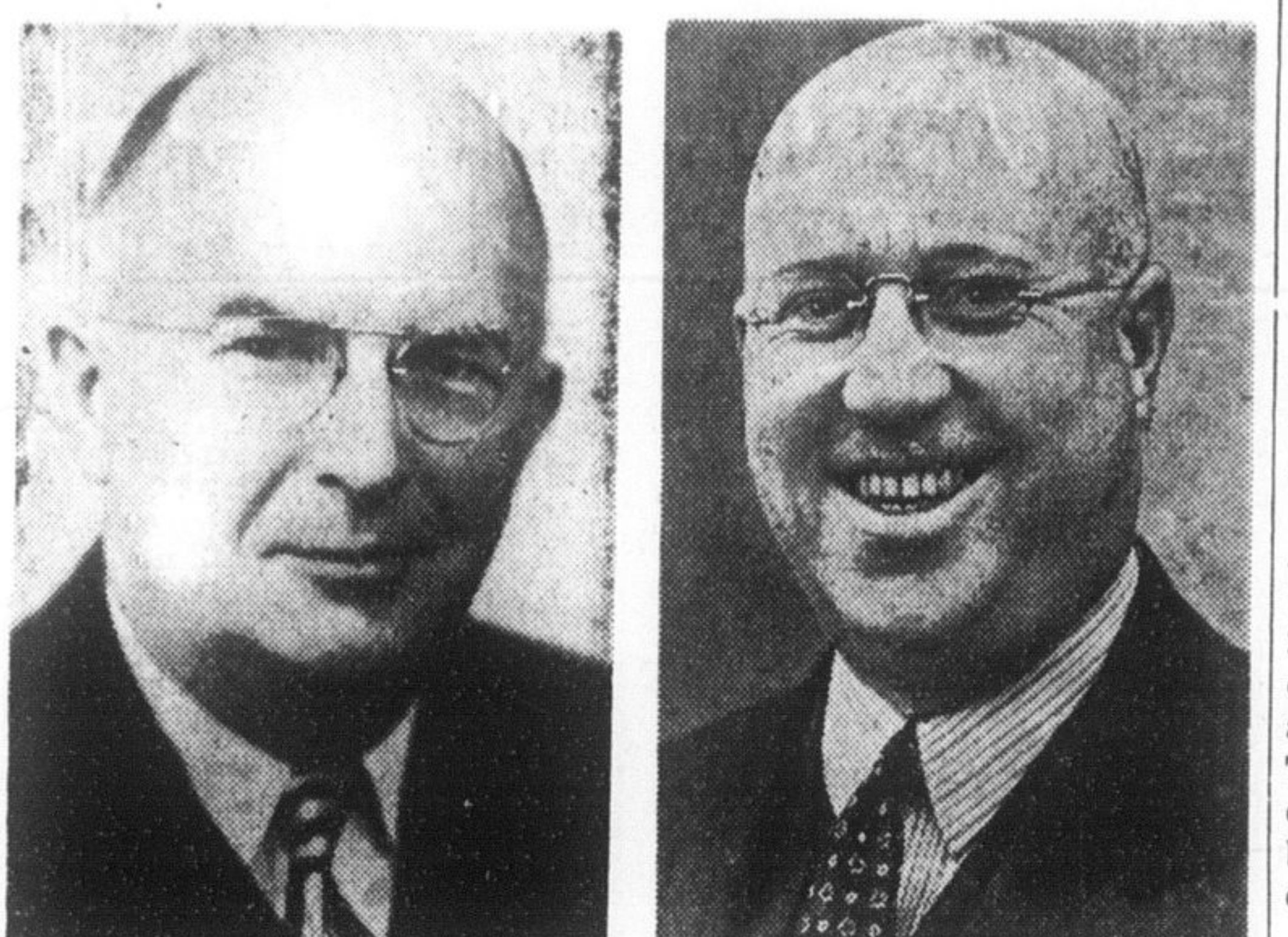
26,000 IN HALTON ELIGIBLE TO CAST VOTE ON NOV. 22



PRESENT REPRESENTATIVE, Stanley Hall (right) has been Halton's representative at Queen's Park for three terms and is seeking re-election for a fourth term. A Progressive Conservative candidate, Mr. Hall lives near Hornby. Leslie Frost (left) is the provincial leader of the Conservatives.



NEWCOMER TO THE HALTON POLITICAL arena, Angus Langille (right) bears the standard of the C.C.F. party which, under the direction of E. Jolliffe (left), was the official opposition in the Provincial Legislature for the last term. Mr. Langille is an Oakville plumber, active in the C.C.F. organization.



WITH THE PROMISE of a cabinet post if elected, Dr. M. Deans (right) is one of the three candidates contesting the Halton riding. Bearing the Liberal standard, Dr. Deans is an Oakville dentist. He contested the Halton riding in the last provincial election. W. Thompson (left), Liberal leader, has been addressing many groups since his appointment.

Evidence Taken During Equalization Hearing

Judge W. N. Robinson told municipal representatives of Halton at the hearing on the equalization of assessment Monday that he felt the validity of the by-law passed by County Council should be tested before equalization is proceeded with. The representatives attended the hearing on Monday of this week in Milton.

The Judge pointed out that "we could go on and hear the case and arrive at a conclusion and leave it to anyone to appeal on the question of the by-law. I feel there is a question of the validity of the by-law".

The hearing was a result of the by-law passed by County Council which established the share to be paid by each municipality toward the county costs. This by-law was appealed by Oakville, Burlington and Georgetown, which makes the hearing necessary.

Judge Robinson reminded representatives that only a Justice of the Supreme Court could rule on the validity of the by-law. As a county judge, all he could do was amend the by-law.

In his opening address, the Judge also suggested that the cost of testing the validity of the by-law should be borne equally by the municipalities and each side should be presented to the Justice of the Supreme Court.

The court proceeded to take evidence for presentation to the Supreme Court.

County Assessor Ford Rogers, in giving evidence said, "It appeared, in view of the confusion that existed in the county, the method used seemed the only equal way." He referred to the varying dates of completion of reassessment in the county's municipalities.

Esquering and Georgetown Split

Georgetown and Esquering have agreed to terms of settlement on the levy for 1951 to be paid to the North Halton High School District Board. These terms will be placed before the Municipal Board at a hearing on Friday and Georgetown requests that the Board give an order setting this levy. The agreement gives Esquering a reduction of 3 per cent. and Georgetown an increase of this amount, an even split on the amount. The total levy for the year is \$40,901.30. The agreement was reached by representatives of the municipalities on Monday in Milton.

The new basis for the levy gives Acton 13.51 per cent.; Milton 14.57 per cent.; Georgetown 21.31 per cent.; Nassagaweya 14.85 per cent. and Esquering 35.70 per cent. The disputed amount only affected Georgetown and Esquering and other municipalities were in agreement on their share of the levy.

Halton Is Third In Judging At Fair

On Monday, November 12, at the Coliseum in Toronto, 30 counties of Ontario competed in the inter-county livestock judging competition at the Royal Winter Fair. The teams consisted of three boys coached by the Agricultural Representative of the county. These boys won the highest honor in their counties on Achievement Day last June.

The county of Peel placed first with 2603 points, followed by Durham second with 2588 and Halton third with 2540.

The Halton team consisted of John C. Willmott of Milton R. R. 1; John Currie, Georgetown R. R. 2 and Mac Sprowl, Acton R. R. 4, coached by Agricultural Representative J. E. Whitelock of Milton. The boys and their coach deserve credit for the honor they have brought to Halton in placing third out of 30 counties.

Mrs. Coulter Tells About Folk Schools

Mrs. L. Wills was hostess for the November meeting of the Scotch Block Women's Institute, Mrs. Roy Coulter was the guest speaker and spoke on the Folk School which was held at her place last year.

Folk Schools originated in Denmark and are being sponsored by the United Co-operatives of Ontario. The students planned their own program which included such things as leathercraft, folk dancing, speakers and discussions. Their aim is not to make a better living but to make living better.

Donations of \$25. were made to the Santa Claus fund, A.C.W.W. fund, and a Christmas box is also to be sent to a local boy in service in Korea.

Classroom Space Considered By Bd.

Milton Public School Board met in their regular session on Monday of this week with all members Mrs. King, G. E. Goodchild, C. N. Kerr, H. Trimble and T. R. McKim present and R. T. Wilson, chairman, presiding.

The following accounts were approved for payment:

Gage and Co.	\$32.88
Kerr's Pharmacy	2.95
Warwick Bros.	100.34
Hydro	11.74
R. S. Adams	548.07
Neil A. McPhail	18.33
National Stationers	57.85
Smith, tuning piano	3.50
The James Texts	6.00
Gordon V. Thompson	18.90
Foster's Repair	6.75
R. R. Ford	21.00
Simpson's	17.15
McKim Hardware	3.08
Dawson Hardware	1.45

A discussion of matters concerning the teaching staff and classroom accommodation followed.

St. Paul's W.M.S. Discusses Missions

The Afternoon Auxiliary, W.M.S. of St. Paul's United Church, had a well-attended and interesting meeting on Thursday of last week. Mrs. George King was hostess to the group.

Mrs. R. Galbraith, president, extended a welcome to members and visitors and received the secretary and treasurer's report as well as those of the varied departments at work. The report was an encouraging one.

Mrs. J. E. Taylor had charge of the worship and devotional program which was in keeping with the study theme, "The Church of the City Frontiers."

Mrs. R. M. Clements gave the interesting study—an insight into the challenge of the city for the spiritual ministrations of the Church with special reference to the downtown evangelistic ministries.

It was learned that there is an increasing trend of urban population as compared with the rural and this in what we have regarded as largely "agricultural" Canada. Consequently, there is a Church Extension demand of 150 new churches needed along with 50 mansees. It is the well considered program launched by the General Council of the United Church of Canada.

Mrs. Ray Lawson Opens Church Sale

Mrs. Ray Lawson, wife of the Lieutenant-Governor of Ontario, officially opened the third annual bazaar of the Willing Workers of Palermo United Church in the community hall recently.

Mrs. Lawson, in gracious manner, told of a personal incident upon receiving the invitation from the Palermo ladies to perform the duties of opening the bazaar when she drew the attention of a very young member of her family to the fact that to be a "willing worker" was a worthy ambition to follow from youth up. She wished these Willing Workers the utmost success as she declared the sale open for business.

A beautiful bouquet of flowers was presented to her by five-year-old Dorothy Tovell.

Preceding the opening, a few moments in devotional offering were conducted by the Rev. Arthur Page, minister of Palermo and Bronte United Churches.

Mrs. C. L. Joubert, president of the Willing Workers, welcomed the large number of ladies who attended the bazaar which was a successful affair.

The organization which has been in operation for the last three years devotes the entire proceeds of their endeavours to the work of the church.

They sponsor the junior choir and other movements and are ever ready to step in with a helping hand when the occasion arises in this comparatively small community.

The committee in charge of the bazaar consisted of Mrs. Arthur Spencer, Mrs. William Fox, Mrs. Harold Brittain, Mrs. John Vansickle, Mrs. William Tovell, Mrs. Clarence Kingston, Mrs. Charles Clure, Mrs. J. C. Jarvis.

Blaze On Wheels Comes To Brigade

Milton Fire Brigade sat and waited for the fire to come to them when they received word on Monday morning at about 5.50 a.m. from the C.P.R. station operator at Guelph Junction that a C.P.R. car had caught fire and was being brought to Milton.

Half the cargo of baled wool was saved as firemen battled the blaze in bales ranging from four to 700 pounds. Shipped from Walnut Ridge, Arkansas, by the Howard Cotton Co., the baled wool was on its way to Dominion Textiles Co. in Montreal.

Firemen, under Chief A. Clement got the hose line up from Main St., got ready and sat and waited until the car was pulled in on a through freight and left for the brigade to extinguish.

Fire Ravages Apt. In Sunday Blaze

Fire of undetermined origin caused \$1,000 damage to the second floor apartment of Bruce Mountain, Main St., Sunday. The early morning blaze, according to firemen, started near a chesterfield and an electrical wall outlet. Prompt action by Milton firemen under Chief A. E. Clement confined the blaze to the living room. Considerable smoke damage was caused to other parts of the apartment.

"I was awakened by the smell of smoke about 6 o'clock. When I got up, the living room seemed to be a mass of flames. I grabbed the two children and called my wife and we made our way out to a neighbors," Mr. Mountain recalled, adding, "It almost makes one cry as we had the place redecorated after moving in recently."

Water seeping through the floor caused some damage to goods in Mill's Dry Goods under the apartment. Damage was partially covered by insurance.

F. Mills praised the quick and efficient work of the Brigade in preventing extensive damage to his stock in the store below.

Halton WMS Rally Covers Three Days

Representatives of the Woman's Missionary Society of the Halton Presbytery of the United Church opened their three day Rally in St. Paul's United Church, Milton, on Tuesday of this week with rallies in Nelson United Church on Wednesday and Lowville United Church on Thursday.

Ladies attended the rallies from Ashgrove, Acton, Ballinacat, Bethel, Georgetown, Melville, Milton, Appleby, Bronte, Burlington, Nelson, Munn's, Oakville, Palermo, Wesley, Millgrove, and Lowville.

Miss D. Kilpatrick, one of the church's missionaries in India, addressed the three rallies. It was pointed out that Miss Kilpatrick had spent as many years in India as she had in Canada. She was Dean of Victoria College in Toronto for a short time and also a teacher at a Toronto school.

One of the highlights of all three rallies was a display of books shown by Mrs. E. B. Clements of Milton. She spoke briefly on the collection, which she called her "Canada tree of books".

The theme of the three rallies is "The World for Christ", and sessions began at 10 a.m. on the three days and continued until late in the afternoon. Each of the groups assisted with the program.

Evening Auxiliary Hold Regular Meet

The November meeting of St. Paul's W.M.S. met at the home of Mrs. G. Goochill. Mrs. A. B. Woodley, president, opened the meeting with prayer and welcome to all visitors and members present.

The secretary's report was read and the roll call was followed by reports of various secretaries.

It was requested that as many as possible should attend the sectional rally held on November 13 at St. Paul's United Church.

It was moved by Mrs. E. B. Clements and seconded by Mrs. H. L. McNab that the Evening Auxiliary meet on the first Wednesday of each month instead of the first Tuesday in order that those wishing to attend Night School may do so.

The nominating committee elected were Mrs. A. L. McNab, Miss M. Gemmill and Mrs. R. Cole.

Miss M. Trethewey gave the study book "From lakes to north-west lights" assisted by Miss Burley, Miss M. Gemmill and Mrs. R. Cole.

The devotional was conducted by Mrs. E. Prentice and had the theme title "Time". An enjoyable social time was spent with tasty refreshment served by Miss N. Cunningham and Mrs. S. Randell.

Three Candidates Seek Election In Prov. Contest

Over 26,000 voters are eligible to poll their votes in the provincial election next Thursday in Halton County. As a matter of fact the preliminary lists show 26,270 in the nine municipalities of the county. Every British subject over 21 years of age is eligible to cast a ballot. In the provincial election in 1948 there were 16,039 who made use of the franchise. There are three candidates in Halton representing the three parties prominent in Ontario.

Stanley L. Hall is the Progressive-Conservative candidate. He has been the choice of Halton electors in three previous elections and now seeks a fourth term. Having been in public office for so long, Mr. Hall is naturally well-known to most electors throughout the county. He is a well-known farmer resident of the Hornby district.

Residents of the north end of Halton County remember that it was during Mr. Hall's tenure of office that the final section of No. 25 Highway between Acton and Milton became a paved surface and a fine highway from north to south instead of the patch upon patch which prevailed for over 25 years.

Under the Liberal banner the candidate is again Dr. Murray Deans of Oakville, who was also a candidate in the election of 1948 and polled a total vote just 118 short of the successful member. Dr. Deans is a dentist who has resided in Oakville for a number of years, and, we understand, quite a public-spirited citizen for Oakville. E. Langille, who is a plumber in that town and district. He is a newcomer to the Halton electors and this is his first bid for a seat in the Legislature.

There are 26,270 voters eligible in the county's 42 polling subdivisions, made up as follows:

	Voters	Polling Sub-div.
Acton	1719	4
Burlington	3963	4
Esquering	2383	9
Georgetown	2146	3
Milton	1522	3
Nassagaweya	1175	4
Nelson	4658	13
Oakville	4020	5
Trafalgar	4684	8
	26,270	42

Instructions to the voters are, of course, prominently displayed at every polling booth on election day but in spite of this, there are usually a number of spoiled ballots. The procedure is very simple. You must use an X to designate your choice, placed opposite the candidate you favor. No other mark is acceptable and you can, in this election, only vote for one candidate. The names appear on the ballot paper in alphabetical order.

Polls are open from 8 a.m. until 7 p.m. and election day is Thursday, November 22nd.

Agreement Blocked On Halton Equal Assessment

That proverbial thorn in the side of County Council — equalized assessment—was again hashed and rebashed at the regular meeting of Halton County Council last Tuesday. It was one of the longest sessions to be held in a number of years. Much friendly argument was heard, and three motions were lost during the discussion with appealing representatives voting in favor or against the proposals for a mutual agreement.

George E. Elliott, solicitor for Milton and Nassagaweya as spokesman, explained to council details of the appeals as heard before Judge W. N. Robinson. In conclusion he submitted it would be wise for council to settle the differences in the equalized assessment by-law thus avoiding further expense.

As the figures in the assessment by-law appeared to be illegal, he suggested that in order to make them legal, as up to the end of 1950, for each municipality to deduct from the present figures all new assessments added since January 1, 1951. He argued this would give a reasonable and true picture under the new equalized assessment.

He further suggested if the appeal were to continue it would be difficult to receive a Court finding before the end of the year, leaving council without means of financing for the coming year.

Three resolutions were tabled in connection with the question and Warden Dick ruled each as presented would have to be accepted by each municipality, or the motion would be lost. "There has to be unanimity in each case," he stated.

The first, sponsored by Deputy-revee Charles Palmer and Reeve George Thorpe, Nelson, "that

(Continued on Page Four)