

**FOSTER'S
REPAIR
SERVICE**

ELECTRICAL
AND
REFRIGERATION

Phone 354



**Guernsey Breeders Stage
Field Day**

Saturday of last week was Guernsey day in Halton. It was the occasion of the Guernsey field day, sponsored by the Halton and Peel Club, and was held at Valley Crest Farm, near Palermo. Well over 200 breeders and their families were present. Numbered among the guests were breeders from the York

Simcoe Club; the "Big Four" club in Durham, Ontario, Victoria and Peterborough; the Quinte club in Northumberland, Hastings and Edward counties as well as other points in Western Ontario.

Prof. Geo. E. Raithby of the Ontario Agricultural College, was in charge of the judging school held in the morning. Following the lunch an excellent program was run off under the direction of President Arthur Spencer and Vice President John Y. McNabb, of the Halton-Peel Club. This included short addresses by Dr. A. R. Campbell, secretary of the Canadian Guernsey Breeders' Association; Prof. Geo. E. Raithby of the O.A.C.; and agricultural representative, J. E. Whitlock; a program of sports for the young folk and a parade of prize winning Clydesdales under Bert Berry, manager of Valley Crest Farms.

In the tug of war event the Halton-Peel team outpulled their fellow breeders from outside points. Despite threatening weather the event was a huge success and reflected much credit on the directorate of the Halton-Peel club and also on the hosts of the day, Mr. and Mrs. Bert Berry of Valley Crest Farms, who had left no stone unturned to make the event an outstanding success.

**Check Your Wheat For
Hessian Fly**

The Hessian Fly some years ago was listed as the most destructive insect attacking wheat in the field. For the past ten or fifteen years it has been a pest of minor importance.

During the past few days we have had two inquiries from Halton growers who were wondering what was causing their wheat to break off just near the ground.

Upon investigation they found what appeared like flax seeds. This is the pupae stage of the Hessian Fly. It is quite possible that the cool weather this spring was favorable for its development. The adult is a small mosquito like fly. The eggs are laid on the leaves and the maggots from these eggs work down between the leaf and the stem. These maggots suck the juice out of these stems and cause

a weakened condition, and consequent breakage at or near the ground, and at about this time of year.

The adult flies emerge the latter part of August and in early September and lay their eggs on volunteer wheat or on early seeded wheat.

Control

If the field is not seeded, all wheat stubble should be plowed under completely as soon as possible after the wheat is harvested and then worked to firm the soil. Few of the flies will be able to emerge from such soil.

If plowing cannot be done promptly, let the volunteer wheat come up. This wheat will be earlier than the regularly seeded wheat under normal conditions and will act as a trap crop for the egg laying period of the fly. This should not be plowed under until the end of September.

Late planting is also recommended by our Entomological authorities. In short, if you were troubled with Hessian fly this year, sow just as late as is safe in your district to obtain a good stand before winter. In our opinion this would range from roughly, September 6th to September 15th.

Fruit is produced on a commercial scale in Canada in the provinces of Nova Scotia, New Brunswick, Quebec, Ontario and British Columbia.

Clean dishes can be contaminated by the use of unclean towels. This potential hazard can be avoided through use of hot rinsing water and allowing the dishes to air-dry.

FASHION HINT



The season's newest—the duster coat. The pictured style is a butcher linen pyramid duster with a mandarin collar. Pastels and off colours are most popular for these striking coats. Certainly it's billowy skirt will keep off all the dust in town.

**Get EXTRA ROOF
PROTECTION**

with **BP**
VEE LOK
SHINGLES

*They're LOCKED TOGETHER
TO BEAT THE WIND!*



Let it blow; they won't budge! With their special locking device, they present a united front to wind and weather. They're durable, fire-resistant, economical — and their distinctive pattern, in your own choice of colour, provides a most attractive appearance.

Ask for full details and samples

Clement Floor and Roof Service

Main St. Milton Open Evenings Phone 426W

ATTENTION FARMERS!

WE ARE PAYING THE HIGHEST PREVAILING PRICES
HORSES -- CATTLE -- HOGS
FOR DEAD OR CRIPPLED FARM ANIMALS

Telephone Collect for Immediate Service
GORDON YOUNG LTD.
MILTON 210 TORONTO EMPIRE 3-3636

PENNSYLVANIA

EGG PEA BUCKWHEAT STOVE NUT
BRIQUETTES COKE CASCADES

Howard's Poultry Remedies

Royal Purple and Pratt's Stock and Poultry Tonics

Hartz Mountain Bird Seed

BUILDING SUPPLIES

Lime, Gyroc Board and Lath

TENTEST CEMENT MASONITE

Insulation, Loose and Batts

LIVINGSTON STOKERS
Sales and Service

R. S. Adams Stores Ltd.

PHONE 48



**MODERN MECHANIZED HELP
FOR ACTIVE DUTY
ON THE FARM FRONT**

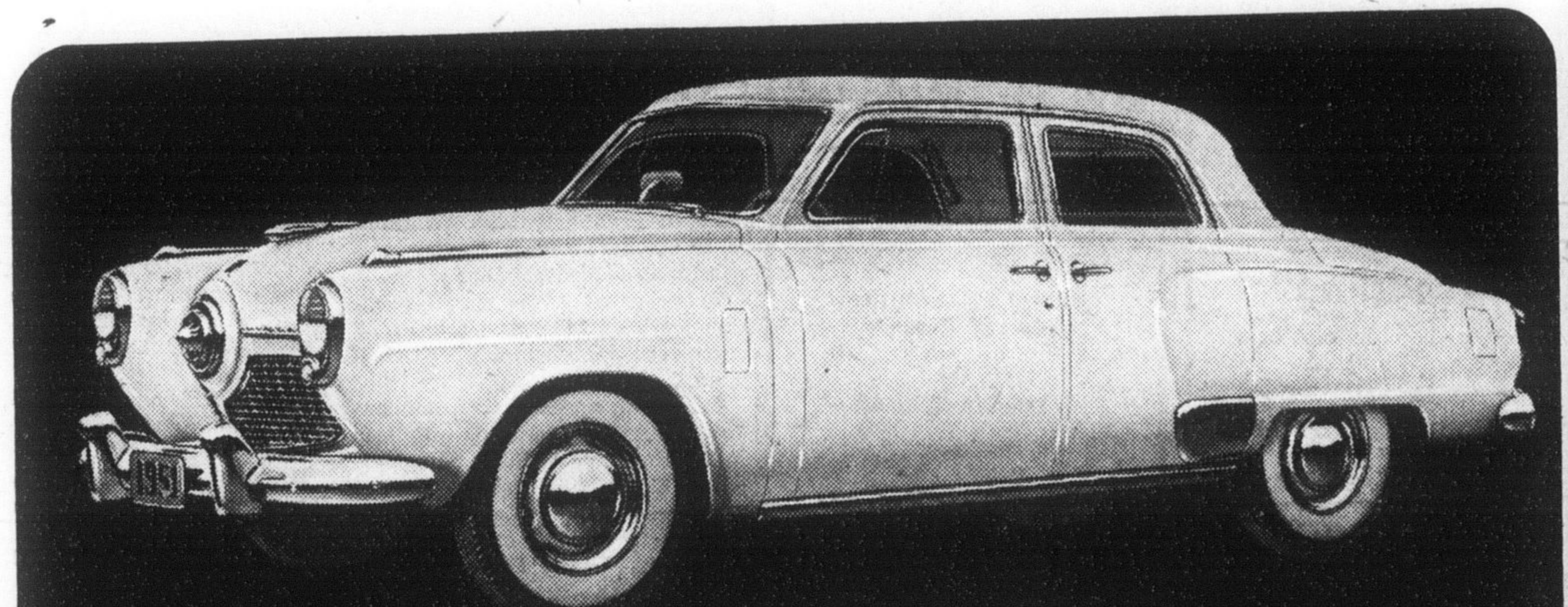
In the campaign for food, mechanical equipment is playing an increasingly important part. Machines enable fewer men on the farms to maintain and increase production.

As a result of the continuous research and experimentation by the agricultural implement industry, farmers today can get tractors, combines, and power machines that offer greater advantages in the saving of time and labor. In times of manpower shortage, modern equipment is especially essential in getting farm work done at the right time to produce best results.

For more than one hundred years, Massey-Harris has been a leader in developing machines that through service and efficiency contribute to the progress of Canadian agriculture. Your local Massey-Harris dealer will be glad to give you particulars of the latest models.

MASSEY-HARRIS COMPANY, LIMITED
Established 1847

**Car and truck owners of Milton!
Meet a new Studebaker Dealer!**



Come in and see the

NEW 1951 STUDEBAKER

Grand new Champion! Brand new V-8 Commander!



See the new stand-outs in low cost hauling!

STUDEBAKER TRUCKS

Studebaker announces
the appointment of a new dealer in Milton
CHISHOLM MOTORS
Main Street Milton, Ontario

"MORE MILEAGE" STUDEBAKER SERVICE
Complete facilities for the finest kind of car care and truck care! Modern equipment!

TRY STUDEBAKER'S NEW AUTOMATIC DRIVE
It's "no clutch-no gearshift" motoring at its finest... extra cost but extra marvelous!

M



R

Phone 490