



FARM NEWS

From Halton's Farm Lands

Night School Classes Open With Record Attendance

Tuesday evening, November 17th saw the fourth annual opening of the Halton Community Night School. A total of 520 enrolled in some of the various courses.

At Acton where courses were organized in Elementary Oil Painting; Advanced Oil Painting; and Plastics; a total of 55 were on hand. In Georgetown the courses in Metalcraft; Ceramics; and Leathercraft, attracted 45 students.

At Milton, where the main classes got under way, a total of 420 were in attendance for some one of the 16 courses organized. At the latter centre it is expected another 20 or 30 applications were accepted and who for various reasons were unable to be on deck on opening night.

will complete their registration on November 24th. This enrolment necessitates a total staff of 29 teachers at the three centres.

Today we were in contact with Mrs. W. J. Beatty and Richard Licata, members of County Planning Committee at Acton and Georgetown respectively. Both report "everyone delighted" and the classes off to a good start. In so far as we can determine the same is generally true at Milton. Naturally, there are always a few snags to be ironed out—but everything points to another enjoyable and profitable season's activity. Incidentally, it would appear that all classes are filled to capacity at Acton. The same is true at Georgetown with the possible exception of the course in Metalcraft. The Milton classes too, we understand from Chairman A. T. Woodley,

are filled to capacity and no more applicants can be accepted with the exception of a few more in Farm Business and Effective Business Procedures. These two courses in general, are lecture courses and the only limit is hall or room accommodation.

Folk School Committee Make Plans

The annual meeting of the Halton Folk School Committee was held recently in the Court House in Milton. Mrs. A. R. Coulter was appointed as chairman and with Mrs. R. E. Ellenton as secretary-treasurer. An invitation to hold the 1954 Halton Folk School at the home of Mr. and Mrs. Mac Alexander was accepted. Plans for a program planning meeting and the selection of a "Theme" are under way.

Leadership Training Course Withdrawn

Due to the fact that the Planning Committee of the Halton Night School has included "Leadership Training" as one of the classes in Milton under the heading of "Effective Business Procedures," a resolution was passed by the Folk School Committee recommending to the Halton Federation of Agriculture that the Leadership Course be laid over for another year.

Nassagaweya Federation Stage Excellent Annual

Despite the Royal Agricultural Winter Fair, the High School Commencement at Milton, and many other local events of interest, Thursday evening last saw an excellent attendance at the 1953 annual meeting of the Nassagaweya Federation of Agriculture, held in the Township Hall at Brookville.

In our humble opinion it was one of the best meetings we have attended in some time. Following an enjoyable sing-song led by Murray McPhail with Mrs. Geo. Robertson as accompanist, the main feature of the program, presided over by president Wilfred Kennedy, was an address by John Brodrick of St. Cath-

rines, past president of the Ontario Federation of Agriculture.

Mr. Brodrick took as his subject "A policy for Canadian Agriculture." In a very comprehensive manner, the speaker reviewed the problems facing agriculture in Canada and discussed the possibilities of production controls—the two price policy, etc.

A panel discussion chaired by Agricultural Representative J. E. Whitelock followed—the panel consisting of Professor Ralph Campbell, of the Department of Economics, Guelph; J. C. Brodrick; W. E. Breck, Burlington; Reeve Stanley Norrish; and R. S. Heatherington. While the panel failed to present any concrete solution for the serious economic problems facing Canadian Agriculture, nevertheless the different viewpoints of the panel members on some of the points raised in Mr. Brodrick's address, not only added to clarification of the various topics but also indicated the many ramifications of those problems and their multiplicity.

In any event the panel discussion was popular with the audience and we venture to prophesy that more panel discussions will follow at other Halton agricultural gatherings during the coming winter. A vocal selection by Mrs. Kathleen Slinn and a reading by Mrs. Malcolm Moffat rounded out an excellent evening's program. The newly elected officers are as follows:

President—Calvin McIntyre.
Vice-President—Horace Blyth.
Secretary-treasurer—A. R. Service.

A Few Halton Highlights at the Royal

The Silver Jubilee of the Royal Agricultural Winter Fair was in so far as we could determine a tremendous success. Unfortunately for your reporter, Night School and meetings and activities prevented seeing very much of this great show. We question very much if we will ever get over the thrill one gets on entering the West Annex of the Coliseum. We are ashamed to admit that we know little about floriculture—nevertheless one would hardly be human, we think, if the sight of the flower section did not

cause him to pause with awe and reverence to drink in the fragrance of those beautiful roses and admire those perfect chrysanthemums. Certainly those responsible for the arrangement are artists in every sense of the word.

While we actually saw little of the 1953 Royal, the same high standard seemed to exist wherever one went—whether in the fruit section—up among the grain and small seeds—or out in the horse palace or the cattle, sheep and swine barns—everywhere was perfection.

Dairy Cattle Show

We did see something of the Jersey and Holstein shows—and what classes they were. Forty and 50 entries in a class were not uncommon. We do know that Ross Segsworth of Burlington got first on his junior yearling Holstein bull, Spruceleigh Fond Hope Minor, which later sold in the Holstein sale of stars of \$3,000. We also know that Blanshard Bros. and A. G. Hunter also of Nelson Township, were in there—just where their Holstein entries stood we are not sure but at least in the years ahead they will have the satisfaction of being able to say "Our herd competed at the 25th anniversary of the Royal Agricultural Winter Fair."

Jersey Show

Here Halton was also well and worthily represented by entries from the herds of M. C. Beatty, Ken Ella, Featherstone Bros., Gerald Graham, and Major Peter Roberts. We also know that at least one red ribbon came back to Halton, and that all of those mentioned were well up around the top in a number of classes.

The Queen's Guineas

A total of 152 4H Club members from nearly all parts of Ontario entered their steers for this great livestock feature, which attracted the largest ringside of any livestock show of the week. These young people were all between the ages of 14 and 20 years. Their steers had made the minimum gain requirement of 1.75 lbs. per day since the feeding period commenced last May

leaving out their respective calves, had secured at least 75 per cent. of the total possible marks in their project—and what a show they put on—no wonder Brigadier C. S. McKee, General Manager of the Royal, stated over the public address system—"In my opinion, this is the outstanding agricultural feature of the week."

The Queen's Guineas didn't come to Halton, but what a showing Katherine Merry of Oakville R.R. No. 2 had the reserve champion. In the Aberdeen Angus section, John C. Willmott duplicated her achievement—in fact, until the final moment, John and his black steer fitted and shown to perfection, stood at the top of that class of 50 doddies and then, the irony of fate—Charlie Yule, noted judge of Calgary, reversed his top pair.

Certainly from a Halton standpoint it gave one quite a thrill when the six top steers (two from each of the three beef breeds) were brought together to make final selection of the Queen's Guineas winner, and

two of them were from Halton. Again the irony of fate—the Angus steer, shown by Ross Graham of Palmerston (Wellington County) which had nosed out John Willmott's entry in the last moment of judging, went on to take the Queen's Guineas. It must have been a heart breaking disappointment to Johnnie and yes, to Katherine, too. However, 1953 is John's last year to be eligible for 4H Club work, and like Sandy Buchanan of former years fame, he also failed by shall we say an "eyelash" and fickle fate, to achieve his greatest ambition to date—to win the Queen's Guineas.

Both young men, during their eight years in 4H club work, established a standard which may well be the goal of 4H club members in the years to come. Gentlemen always, modest winners, good losers, highly esteemed by all who know them—you can rest assured they'll make their mark in the years that lie ahead.

JERKS!

Elevator humorist—Well, you sure have your ups and downs—Ha, ha! Elevator girl—It isn't the ups and downs that bother me—it's the jerks.



AWARDED THE GRAND CHAMPIONSHIP at the Royal Winter Fair for the Angus bull, Dr. W. F. James is shown with the prize animal. Shown in the group from the left are E. Redelmeir, Jim McKay, Mrs. McKay, Mrs. James, Dr. James and Jim Hollinger, the judge from Kansas. Dr. James lives at R.R. 3 Georgetown, east of Milton.



YES! A HOME YOU'LL BE PROUD TO OWN


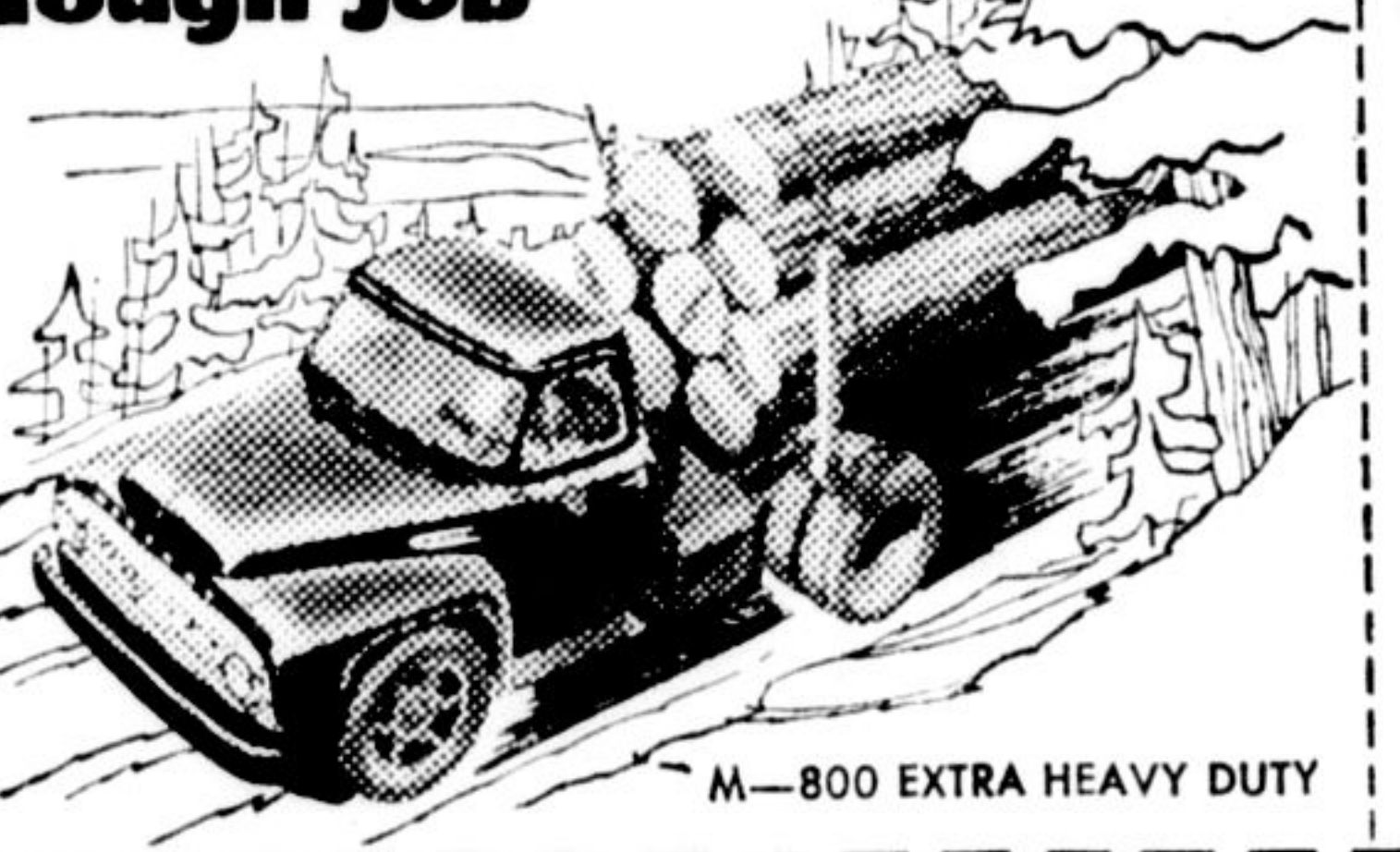




Satisfied owners are now enjoying their Davies built houses on George St.

CONSULT

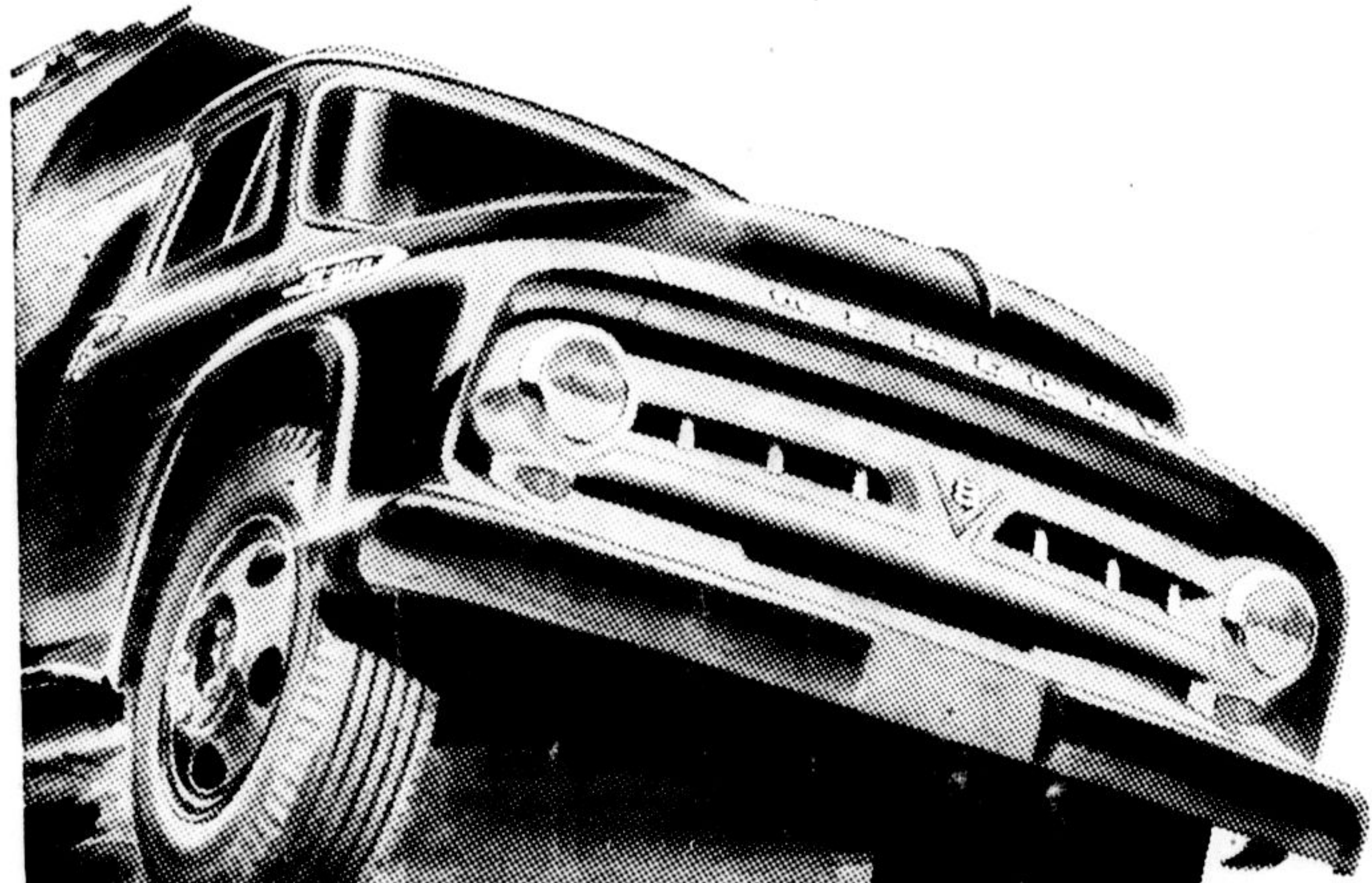
Davies & Davies Ltd.

for information about the new Mountain View Subdivision
GEORGE ST. MILTON OR 193 HIGH PARK AVE., TORONTO

There's a MERCURY TRUCK built for your business!

<p>Rough job</p>  <p>M-600 HEAVY DUTY</p>	<p>Tough job</p>  <p>M-800 EXTRA HEAVY DUTY</p>	<p>Light job</p>  <p>M-100 PICK UP</p>
<p>All-round job</p>  <p>M-350 STAKE</p>	<p>Prestige job</p>  <p>METEOR SEDAN DELIVERY</p>	<p>Delivery job</p>  <p>PARCEL DELIVERY</p>

MOVE IT WITH MERCURY TRUCKS FOR LESS!



Whether the job is hauling concrete blocks to a construction site or cauliflowers to market, there's a rugged Mercury Truck built to trim down operating costs in your business.

Mercury offers over 100 models, from ½-ton to 5-ton rated capacity . . . five great V-8 engines from 106 Hp. to 155 Hp; all featuring "Loadomatic" economy for gas-saving performance. Extra reserves of truck-tough strength, built into the frame and chassis, give Mercury Trucks greater stamina that pays off in lower maintenance costs. New comfort features in Mercury Driver-engineered cabs reduce driver fatigue. On ½-ton models, Automatic drive or Overdrive is available at extra cost.

There's a Mercury Truck that could be saving you money in your business, right now! Discuss your needs with a truck specialist at your Mercury Dealer's.

SEE YOUR MERCURY TRUCK DEALER

GUILD MOTORS

MILTON ONTARIO

FOR A 'SAFE-BUY' IN A USED TRUCK . . . SEE YOUR MERCURY TRUCK DEALER

Important Fabrics FOR BACK to SCHOOL SEWING



NIGHT CLASSES

It's good fun and good economy, too, to make clothes right in your own home . . . with fabrics selected from our large assortment.

All the new tartan blends and suiting materials and all the required sewing needs: buttons, patterns, threads, zippers, linings.

DARK PRINTED FALL COTTONS

Tiny gay prints, checks and plaids. For dresses, blouses or jumpers. All washable.

PRINTED AND PLAIN CORDUOYS

Top quality for skirts, jumpers, suits or jackets. Huge choice of colors.

WE FEATURE McCALL AND SIMPLICITY PATTERNS

New Rayon Fabrics

They feel like wool and look like wool. Are priced extra low.

Satisfaction Guaranteed OR MONEY REFUNDED

Milton Department Store
Milton, Ont.
Phone 112