

Notices of Births, Marriages and Deaths are inserted in this column without charge. In Memoriam Notices 50c, and 10c per line additional for poetry. Cards of Thanks 5c.

BORN

HOWARD—At Mount Hamilton Hospital, Tuesday, December 23rd, 1947, to Mr. and Mrs. Brock Howard, a daughter, Sharon Linda.

SMILLIE—George and Doris Smillie are happy to announce the birth of their son Stephen George, at Milton Private Hospital, Friday, December 26th, 1947.

WILSON—To Mr. and Mrs. Ernest R. Wilson (nee Margaret Brown) in Milton Private Hospital on Friday, December 26th, 1947, a son, Kenneth Reid.

CARD OF THANKS

I wish to convey my many thanks to Box Holders of R. R. No. 1, Milton for their lovely banquet held in the Odd Fellows Hall, December 16 when you presented me with a lovely address and handsome purse full of money. Happy New Year.
Archie Miller

- Brevities -

- Happy New Year to All!
- Schools re-open on Monday. The long holiday is over.
- Good-bye, old 1947. You've been a pretty fair old year all round.
- Hockey fans can secure a copy of the Intermediate Hockey Schedule for intermediate games by asking at The Champion office. The schedule has a space for scoring the games of the season.

HOME PAPER AND PROGRESS

One of the services of the home town paper is to report progressive movements, and to discuss efforts that are made for the progress of the community. If people wish to suggest ideas which they feel would be beneficial to the community, they can write to the home town paper, which is glad to print hopeful suggestions. The discussion of home town questions at community meetings is reported by the home paper, which helps to arouse interest in local affairs.

If a progressive movement is started it obtains valuable support and publicity from the home paper. The home paper makes life in the home town seem interesting, and the people who read it constantly keep in close touch with all its activities.

BULL PREMIUM POLICY

Several groups of Ontario farmers are already taking advantage of the new Bull Premium Policy which was recently announced by the Ontario Department of Agriculture to stimulate the use of superior sizes of beef and dual-purpose breeds of cattle.

This plan provides for financial aid to be given by the Department to clubs of three or more farmers with a combined herd of 30 cows, of which one farmer may not have more than 12 animals. The bulls are registered at sales of registered animals, and the Department makes a grant of one-third of the cost. Half of this grant is paid at the time of purchase, the other half at the end of one year, during which time the bull has been in service in the herds of the club members. Annual reports on the project are required, and frequent inspections are made by the Live Stock Branch and the breed associations concerned. This policy is expected to develop greater standardization of type and improvement in the general qualities of beef and dual purpose cattle.

Three clubs have been organized in different parts of the Province and have secured bulls of a high type under this policy.

POLITE SUGGESTION

They tried fall sessions of parliament back in Sir Wilfred Laurier's day. The scheme didn't work even though a special fall session is necessary this year.

Ontario and Quebec members get home for week-ends. Some week-ends are Thursday to Tuesday. That slows the action. Western and even Maritime members are stuck in Ottawa.

Beginning the session in the first week in January would help. And it committees were appointed and proceeded to work forthwith, possibly the lawmakers would not find themselves up to their necks in legislation when the northern hemisphere is knee-deep in June. — The Printed Word.

The use of diesel power in regular passenger service was pioneered on the North American continent by the Canadian National Railways in 1925.

STAINLESS STEEL PROVING MORE VERSATILE

Stainless steel is now being used in many places where chromium plated steel or die casting was formerly favored, reports Hardware and Metal. Because it is chip-proof, rust-proof, can't peel, and if scratched can be reground and polished without losing its rust resistance, it is gaining particular favor for automobile bumpers and accessories, the hardware business paper says.

Obituary

MISS EMMA M. HOWSON

Miss Emma H. Howson, died in Meaford on Thursday, December 18th at the age of 88. She was a daughter of the late Thomas Foster Howson and Isabella Atkinson and was born in 1859 at Hornby. She later lived in Glamis in Bruce County. Miss Howson, trained as a nurse at Eansville, Pennsylvania and was for many years on the staff of the sanitarium there. In 1933 she moved to Georgetown to make her home with her sister on Charles Street. Following her sister's death, she moved to Meaford.

Standards in Business Include Intelligent Advertising

In a recent release the Royal Bank of Canada sets forth in a series of inter-related essays the value of Standards in Business. In later issues we hope to publish extracts from this series as a matter of interest to the general public. Meantime we quote: "Standards perform two functions; they enable us to identify goods and grades, thus buying with greater certainty of getting value for our money and they enable the producer to make more goods with the same effort and investment, thus spreading commodities over a wider area at prices within the reach of more people."

Discussing "Advertising Standards" the following observations are set forth:

"It is axiomatic that if consumers are to get a maximum of satisfaction from their expenditures they should have an opportunity to appraise the probable satisfaction that will attend their choice. Consumers need advertising as a directory of up to the minute information about goods. Without advertising, large-scale production, wide distribution, low prices and a high standard of living would be impossible. But advertising performs its function only when it is education, a broadcaster of news, and a dependable guide.

Thoughtful consumers welcome precise, specific information about the product's qualities and performance. They need all the facts which will help them to judge what is the best value for the money and most suitable for their needs. It is quite possible that greater attention to the making known of quality standards and durability of goods might contribute a vitalizing element to the advertising technique of concerns willing to be specific in telling qualities which their goods possess."

MAKING WASTE PLACES BLOOM

The fact that we don't like Russia's political system and particularly her tendency to try to impose it on unwilling minds need not keep us from recognizing a certain ingenuity whether it is a matter of accomplishment or favorable propaganda. Russia for instance, is reported to be producing cotton that, in its native state is pink, brown, green or blue. This natural cotton is said to have the added advantage that the colors tend to intensify rather than fade under numerous washings.

What is even more interesting, if true, and certainly of even more importance to Canada, is that Russia is said to have succeeded in growing citrus fruits, sugar beets and tobacco beyond the southerly rim of the Arctic circle. If this is true and the report appears in so reputable a publication as the New York Times, we will have to admit the wisdom of accepting their agricultural thinking while we continue to look askance at their political theories.

COUNTY TOWNS IN WINTER

When city people go out into rural communities for summer visits and vacations, they remark that these places are delightful at that time of year, but they sometimes ask if these communities are not dull places during winter.

They see outdoor life largely cut off through the cold months. It may look to them that winter conditions offer little substitute for these enjoyments, so that they look at winter rural life as a time when such communities largely go to sleep. They may think snow and ice obstruct community life in many of these places.

There may be some remote communities where this is true, but in the great majority of small country towns life is very active through the winter. The organizations have their regular meetings, entertainments and social affairs. The movies give constant entertainment, and are offered or are within reach in most places. People are drawn closer together by social activity in these communities, and the winter passes pleasantly. Winter sports and indoor games are a great factor in many places.

Lord Mottistone (Major-General E. B. "Jack" Seely) who died a few weeks ago in his London, England home, was the colorful commander of the Canadian Cavalry Brigade in the First Great War.

At St. Sauveur, 52 miles north of Montreal on the Canadian National Railways, famed Hill 70 stands as a perpetual challenge to skiing devotees.

OPEN THIS MARKET

Why the delay in lifting the restrictions on shipment of Canadian beef, cattle and meat to the United States, asks the Financial Post.

The Geneva Agreements give us an enormous and almost immediate outlet for all of these products that we can spare. And we can use this outlet without causing any serious hardship to Great Britain which normally is not a buyer of our beef and has not taken any cattle for years.

Before the war we exported almost \$15 millions of live cattle to the United States and at present prices that export would be worth at least twice as much.

But that is only half the story. Under the new tariff agreements which come into operation on January 1, the American duty on beef is cut in two. This means that for the first time in years beef is admitted on equal terms with live cattle so that Canadian packing plants now have a real opportunity to compete in supplying meat-hungry American consumers with Canadian beef. In doing so they would be bringing to this country a new and substantial flow of urgently needed American dollars, doing more processing and manufacturing of a natural product in Canada and providing additional Canadian employment.

Each of 200 cases of canned peaches sent from St. Catharines, Ontario, to Princess Elizabeth for distribution in Britain, contains a colored folder describing the city of St. Catharines and the Niagara Peninsula.

Nassagaweya Voters

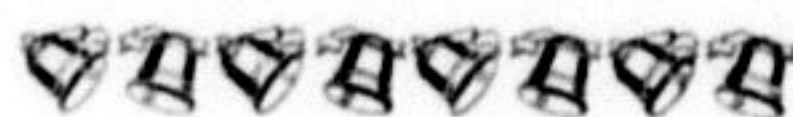
In the Municipal Election, Monday, January 5th

"YOUR SUPPORT WOULD BE APPRECIATED"

Max Storey

CANDIDATE FOR COUNCIL

WE WISH OUR MANY FRIENDS AND CUSTOMERS
A Happy and Prosperous New Year



Milton Dept. Store

Phone 112 Main Street, Milton

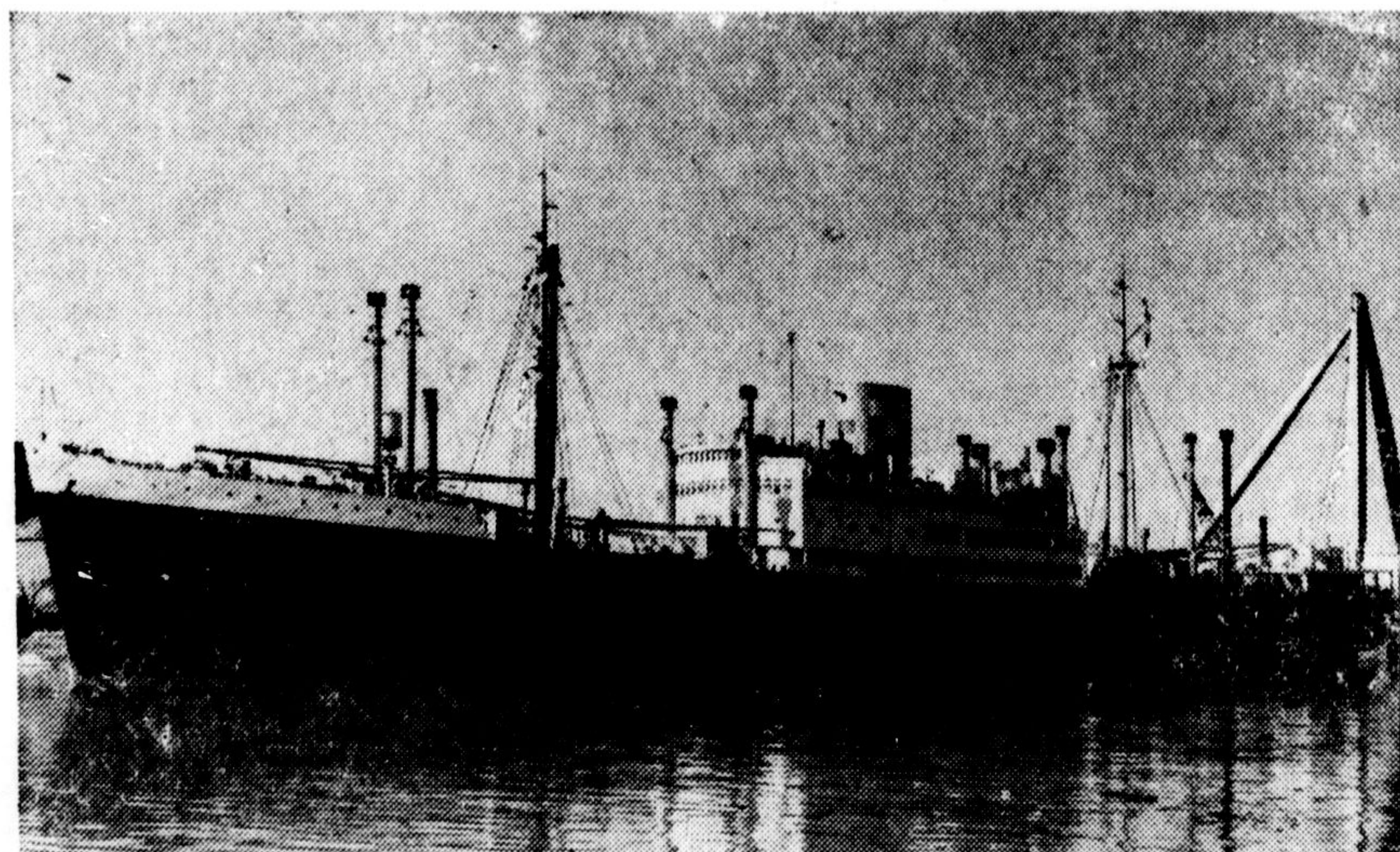


May your sea in 1948 be calm and smooth and may you sail through the year happily. That's our wish for you during the coming year.



Ross Pearen Photos

SHIP OF HOPE



Beginning early in 1948, new Canadians to the number of 800 displaced persons and other immigrants will arrive in this country with each voyage of the Canadian Pacific Steamships' 16-kn't diesel-electric liner Beaverbrae, seen above alongside her refitting berth at Sorel, Que. Formerly

the German vessel Huascarana of the Hamburg-America Line, she was captured, virtually undamaged by the Allied forces in a Norwegian fjord, where she acted as repair and "mother" ship to U-boats seeking their toll of shipping in the North Atlantic, and handed over to Canada as part

reparations payment. Master of the Beaverbrae is Captain G. O. Bauga, O.B.E., R.D., a Royal Canadian Navy veteran of the Battle of the Atlantic who quite possibly tangled with some submarines which had been based alongside his new command.

THE CLASSIFIED SECTION
Buy-Sell-Exchange-Wanted-Etc.

Advertisements under this heading 35c, cash with order, up to 25 words. Additional words 1c per word. If cash does not accompany the advertisement, minimum charge 50c and 1c per word additional for each word over 25. Subsequent insertions 25c.

FOR SALE

FOR SALE—39 four door Dodge, 31 Ford A coach. W. Carter. Phone 217r12, Milton.

FOR SALE—5 cows, 2 due now, also good team aged 4 and 6. J. H. Holmes R.R. 2, Milton, Phone 52r2.

JONES' GREENHOUSES
Cut flowers of all kinds, pot plants, funeral and wedding work done. We deliver. PHONE 257J

FOR SALE—Enamel ice box, ice capacity 75 lbs. Practically new. Apply Mrs. Charles Sharpe, Main Street, Milton, Ont.

FOR SALE—1 autotractor Tractor, G. M.C. motor with orillia (autotractor attachment with new pinions); 1 3-furrow tractor plow, 12 in., Cockshutt, set for 2 furrows; 1 inthrow horse disc with tongue for tractor or horses; 1 outthrow disc with tongue for tractor or horses. These are in working order. Autotractor needs new battery. I will put a new one in it for buyer. I am cramped for room and need the room for the heavier tractor implements I am using. Will sell the works cheap. Phone 290r2 or call and see them at Ham Garbutt's.

WANTED

WANTED—Old live worn out horses. Pearson Bros., Waterdown, Phone 136J or 136W. 7-22

WANTED—Will buy all kinds of fowl, especially heavy hens. We pay market prices. M. Pewtress, Phone 97r23, Milton. 29-3

WANTED — Old furniture, glass, china, quantity of walnut, cherry and curly maple lumber. Phone Burlington 561J or write H. S. Kenney, R.R. 2, Freeman. 97f

Live Poultry wanted. Highest prices paid. Call RUSSELL INGLIS Telephone Milton 234r4 6-30 R. R. 1, Campbellville

WANTED—Live old or worn-out horses for milk feed. We pay market prices. Glenspey Farm, R.R. 3, Milton, Phone 154r11. 7f

Dead Horses and Cattle for free pick up. Phone Milton 210. We pay phone charges. GORDON YOUNG, LTD. Phone AD. 3636, Toronto.

WANTED — Live Poultry, highest prices paid also feathers. We cull poultry. Phone Randall & Morley, Milton 143; Armstrong's Butcher Shop Milton 42; W. E. Dent, Milton 92r15 or write to Moses Zener, 402 Dovercourt Rd., Toronto. 49-32

S. A. FAY

Phone 205

PLUMBING
HEATING and
TINSMITHING

Main St. — Milton, Ont

W.O. BROWNRIDGE

LICENSED AUCTIONEER
FOR HALTON COUNTY

★ ★ ★

Terms Reasonable

We Aim to Please

Phone Milton 189r21

Farnworth Memorials

Monuments at Moderate Prices

CEMETERY LETTERING

Elora Rd. at Cemetery

GUELPH, ONT.

Children's Aid Society

Applications will be received by The Children's Aid Society of the County of Halton at their office, Bank of Commerce Building, Milton, for a suitable private home conveniently located in the County of Halton, to be used by the Society as a RECEPTION HOME for the temporary care of children coming into the care of the Society. A monthly retaining fee will be paid, also a daily allowance for each child in care; cots, bedding, etc. provided.

For further particulars apply to the Society office.

TO RENT

TO RENT—3 unfurnished rooms upstairs. Bath and running water. Phone 97r14 Milton.

LOST

LOST—Small female black, white and tan hound with tan head, in the vicinity of Carlisle. Reward. Phone 3652 Guelph.

LOST—Spare tire off Model A Ford between Knatchbull Corner and Campbellville Corner on second line. E. G. Wilson, Phone 29J, Milton. B

STRAYED

STRAYED—Strayed to the farm of W. J. Robertson, R. R. 2, Milton on or about November 12th, white hound with black markings. Owner may have same by proving property and paying expenses. Phone 217r21, Milton.

MISCELLANEOUS

NOTICE—Will the party who borrowed the chairs from the Farmer's Building please return them immediately. C. Laundon, sec-treas.

TRAVELLERS' GUIDE

CANADIAN PACIFIC RAILWAY STANDARD TIME

Going East—7:31 a.m., daily; 2:23 p.m., daily; 8:37 p.m., daily except Sunday.

Going West—9:28 a.m., daily (flag); 6:31 p.m., daily; 12:47 a.m., daily except Sunday (flag).

Sunday

Going East—7:31 a.m.; 2:23 p.m.; 9:24 p.m.

Going West—9:28 a.m. (flag); 6:31 p.m.

CANADIAN NATIONAL RAILWAY

Going North—7:58 a.m.

Going South—7:35 p.m.

CLEARING AUCTION SALE

IN ERAMOSA TOWNSHIP

OF LIVESTOCK, TRACTOR MACHINERY AND THRESHING MACHINERY, IMPLEMENTS, FEED, ETC.

The undersigned have received instructions from

J. L. GRAHAM

To sell by public auction at his farm, Lot 4, Con. 7, situated on the Everton Line about two and a half miles S. of Everton and 2 miles E. of Rockwood, on

MONDAY, JANUARY 12th

Commencing at 1 o'clock the following:

COWS—Holstein Cow, due in Feb.; Blue Grey Cow, milking well, bred Dec. 17; Holstein Cow, bred in Nov.; Red Heifer, milking well; Roan Heifer, milking well, bred in Nov.; Blue Grey Heifer, bred in Nov.; Red Heifer, bred Sept. 12.

YOUNG STOCK—9 fat Steers, rising 3 yrs., if not previously sold; 5 fat Heifers, 2 yrs. old; 1 Yearling Steer.

SHEEP—Dorsets; 6 Ewes, due in Feb.; 5 Shearling Dorset Ewes, due in Apr.; Downs; 15 grade Ewes, due to lamb in Apr.; Oxford Ram. This is an unusually good flock of ewes.

HARNESS — 1 set double Harness with breechings; Single Harness; Blankets, etc. The horses go with the farm. Good set of open bells.

GRAIN SEPARATOR AND TRACTOR MACHINERY — Mildmay Lion Grain Separator, 24x36" with shredder and grain thrower, clover concaves. This machine is new and never used for custom work. 100 ft. of endless Belt, also other belting; Ford Tractor on rubber with Ferguson Lift Plow; Fleury Bissel 3-section Drag Cultivator; rubber tired Wagon pole or tractor hitch; new I.H.C. 11-disc Fertilizer Drill Pole or Tractor Hitch.

HORSE DRAWN IMPLEMENTS — I.H.C. Binder, 6 ft. cut, nearly new; Deering Mower, 5 ft. cut, rebuilt; Deering Dump Rake; Cockshutt Drop Head Drum Hay Loader, new; Clover Winrower for Mower; Steel Land Roller; M.H. 13-tooth Cultivator; set of 4-section Harrows; Fleury 21 Plow; Steel Truck Wagon; Fleury A2 Sod Plow; Sloop S'eighs; Scuffler; Portland Cutter; Wagon Box; Hay Rack with sliding platform.

FARM EQUIPMENT—Stone Boat; Blacksmith Forge; Hog Crates; Fanning Mill; Wheel Barrow; Renfrew Scales; Bag Truck; Pulper; Hand or Power Cutting Box; Cross Cut Saw; Dehorning Clippers; Hedge Clippers; De Laval Separator, 800 lbs. capacity with motor; 350 lbs. capacity Stillard Scales; Electric Power Sheep Clippers; Hand Power Horse Clippers; Car; Ox Yoke; Grain Cradle; 12 ft. Gate; 15 ft. Gate; and also a real good line of farm tools, forks, hoes, shovels, neck yoke, grain bags, etc.

GRAIN, HAY, FUEL—500 bus. Al-ska Oats, good enough for seed; 1500 bus. mixed Grain; Red Clover and Timothy Seed, mixed; 1/2 bus Alfalfa; 15 ton mixed Hay; 2 ton of 2nd cut Red Clover; 6 cord of 12" Wood from cedar rails; a quantity of Lumber.

FURNITURE—Wooden Bed and Dresser; Iron Bed; Toilet Set; Pillows; Cushions; Quilt Tons; Quilts; Sideboard; Chesterfield Suite; 4 Dining Room Chairs; 2 Rocking Chairs; Daisy Churn, butter bowl and ladle; 1 doz. large Dinner Plates; 1 doz. Cups and Saucers; a number of Tea Plates; Odd Dishes; Counter Scales; Pails, etc.; Snow Shoes.

TERMS: Cash on day of sale. No reserve as the farm is sold and the proprietor is giving up farming.

Lunch counter.

The farm is 1 mile north of No. 7 Highway.

HINDLEY AND ELLIOTT, Auctioneers
Phone Erin or Milton
Fred Baptie, Clerk B-262