

Of Interest to Women



1945 Milton Fair Was Another Splendid Success

(Continued from Last Week)

PIGS

Boar, bacon type, under 12 months—T. J. Brownridge.
Sow, bacon type, born before Sept. 1, 1944—T. J. Brownridge, John Campbell.
Sow, bacon type, born between Sept. 1, 1944 and March 1, 1945—Tom Alderson, T. J. Brownridge, Tom Alderson.
Sow, bacon type, born after March 1, 1945—Orval Watson, Keith Merry.

POULTRY

(A) Cock (B) Hen (C) Cockerel (D) Pullet
Barred Rock—(A) W. J. Alexander, Sunset Farm; (B) W. H. Allan & Son, Sunset Farm, W. H. Allan & Son, W. J. Alexander; (C) W. H. Allan & Son, W. J. Alexander; (D) Sunset Farm, W. H. Allan, W. J. Alexander.
White Rock—(A) W. J. Alexander, W. H. Allan, Sunset Farm; (B) Sunset Farm, W. H. Allan, W. J. Alexander; (C) Sunset Farm, W. J. Alexander; (D) W. H. Allan & Son, W. J. Alexander.
Partridge Rock—(A), (B), (C) and (D), Sunset Farm.
Rock, A. O. V.—(A) W. J. Alexander, L. Ridler; (B) W. J. Alexander, L. Ridler, W. J. Alexander; (C) L. Ridler, W. J. Alexander, F. Kentner; (D) L. Ridler, W. J. Alexander, F. Kentner.
White Wyandotte—(A), (B), (C), and (D), Sunset Farm.
Silver Wyandotte—(A) A. C. Hadfield, F. Kentner; (B) A. C. Hadfield, F. Kentner, A. C. Hadfield; (C) F. Kentner, A. C. Hadfield, F. Kentner; (D) A. C. Hadfield, Fred Kentner, A. C. Hadfield.
Partridge Wyandotte—(A) W. J. Alexander, Sunset Farm; (B) Sunset Farm, W. J. Alexander; (C) W. J. Alexander; (D) W. J. Alexander, Sunset Farm.
Wyandotte, A. O. V.—(A) Sunset Farm, L. Ridler; (B) Sunset Farm, L. Ridler; (C) L. Ridler; (D) L. Ridler, C. Spence, Sunset Farm.
Rhode Island Red—(A) F. Kentner, W. H. Allan & Son, L. Ridler; (B) W. H. Allan & Son, Sunset Farm, W. J. Alexander; (C) F. Kentner; (D) F. Kentner.
New Hampshire Red—(A) W. J. Alexander, L. Ridler, W. J. Alexander; (B) L. Ridler, W. J. Alexander; (C) W. J. Alexander, Sunset Farm, W. J. Alexander; (D) Sunset Farm, W. J. Alexander.

Asiatic

Brahma—(A) F. Kentner; (B) F. Kentner, L. Ridler; (C) Sunset Farm; (D) Sunset Farm.
Cochin, A. O. V.—(A), (B), (C), and (D)—L. Ridler, L. Ridler.
Mediterranean

White Leghorn—(A) W. H. Allan & Sons, L. Ridler, Sunset Farm; (B) Sunset Farm, L. Ridler, W. H. Allan & Son; (C) L. Ridler, W. H. Allan & Son, W. H. Allan & Son; (D) W. H. Allan & Son, Sunset Farm, W. H. Allan & Son.
Brown Leghorn—(A) W. J. Alexander, W. H. Allan & Son, F. Kentner; (B) W. H. Allan, Sunset Farm, F. Kentner; (C) F. Kentner, Sunset Farm, W. H. Allan; (D) Sunset Farm, F. Kentner, W. H. Allan.
Buff Leghorn—(A) Sunset Farm, L. Ridler, W. J. Alexander; (B) Sunset Farm, L. Ridler, W. J. Alexander; (C) Sunset Farm, W. J. Alexander; (D) Sunset Farm, W. J. Alexander, L. Ridler.

Black Leghorn—(A), (B), (C) and (D), L. Ridler, L. Ridler.
Anconas—(A) Sunset Farm; (B) Sunset Farm; (C) W. H. Allan & Son, Sunset Farm; (D) Sunset Farm, W. H. Allan & Son.

White Face Black Spanish—(A), (B), (C) and (D), A. E. Waldie, A. E. Waldie.

English

Buff Orpington—(A), (B), (C), and (D) Sunset Farm.
Black Orpington—(A) F. Kentner, (B) L. Ridler; (C) F. Kentner; (D) F. Kentner.
Dorking, A. V.—(A) L. Ridler; (B) L. Ridler; (D) L. Ridler.
Cornish, A. V.—(A) Sunset Farm; (B) Sunset Farm; (C) W. J. Alexander; (D) Sunset Farm, W. J. Alexander.

Sussex, A.V.—(A) Sunset Farm; (B) Sunset Farm; (C) W. J. Alexander; (D) Sunset Farm, W. J. Alexander.

Polish

Polish, W.C.B.—(A) C. Spence, C. Spence; (B) C. Spence, C. Spence; (C) C. Spence, C. Spence.
Polish, Golden or Silver—(A)* C. Spence, A. E. Waldie; (B) C. Spence, A. E. Waldie; (C) A. E. Waldie, C. Spence, A. E. Waldie; (D) A. E. Waldie, C. Spence, A. E. Waldie.

Polish, A.O.V.—(A) A. E. Waldie, C. Spence, L. Ridler; (B) C. Spence, L. Ridler, A. E. Waldie; (C) A. E. Waldie, A. E. Waldie; (D) A. E. Waldie, A. E. Waldie.

Games

Game, A. V. Modern—(A) and (B), A. E. Waldie; (D) A. E. Waldie, A. E. Waldie.
Game, Old English Black Red—(B) and (D), L. Ridler.
Game, Old English, A. O. V.—(B), (C), and (D), L. Ridler.

Bantams

Game Bantam, A.O.V.—(D) A. E. Waldie.
Game, Bantam, Old English—(A) F. Kentner, Sunset Farm, A. E. Waldie; (B) Sunset Farm, A. E. Waldie, F. Kentner; (C) A. E. Waldie; (D) Sunset Farm, A. E. Waldie, L. Ridler.
Game Bantam, Old English, A.O.V.—(A) F. Kentner, F. Kentner; (C) F. Kentner.
Bantam Cochin, White—(A), (B), (C), and (D), F. Kentner.
Bantam Cochin, Buff—(A), (B), (C), and (D), Sunset Farm.
Bantam Cochin, Black—(A) and (B), Sunset Farm.
Bantam, Seabright—(A) Sunset Farm, L. Ridler, A. E. Waldie; (B) L. Ridler, Sunset Farm, A. E. Waldie; (C) A. E. Waldie; (D) L. Ridler, A. E. Waldie.
Bantam, Rose Comb—(A) and (B) F. Kentner, A. E. Waldie; (C) A. E. Waldie, F. Kentner; (D) F. Kentner, A. E. Waldie.
Bantam, Brahma—(A), (B) and (D) C. Spence.
Bantam, Cornish—(A) A. E. Waldie, N. A. Sinclair; (B) N. A. Sinclair, N. A. Sinclair, A. E. Waldie; (C) N. A. Sinclair, N. A. Sinclair; (D) A. E. Waldie, N. A. Sinclair.
Bantam Polish—(A) C. Spence, A. E. Waldie; (B) C. Spence, A. E. Waldie; (C) A. E. Waldie, C. Spence; (D) C. Spence, A. E. Waldie.
Bantam, A.O.V.—(A) L. Ridler, A. E. Waldie; (B) A. E. Waldie, L. Ridler; (C) A. E. Waldie, L. Ridler, A. E. Waldie; (D) A. E. Waldie, L. Ridler, A. E. Waldie.
Silkie—(A) L. Ridler, Sunset Farm; (B) Sunset Farm, L. Ridler; (C) and (D) Sunset Farm.
Barred Rock—F. Kentner, F. Kentner, W. H. Allan & Son.
New Hampshire, Red—W. J. Alexander.
White Leghorn—W. J. Alexander, F. Kentner, W. H. Allan & Son.

DUCKS

Ducks, Rouen—(A), (B) and (C), W. H. Allan & Son.
Duck, Pekin—(A), (B), (C), and (D), W. H. Allan & Son.
Duck, Ind. Runner, A.O.V.—(A), (B), (C) and (D), L. Ridler, L. Ridler.
Duck, Mallard—(A) W. H. Allan & Son, A. L. Patterson, A. L. Patterson; (B) A. L. Patterson, W. H. Allan & Son, A. L. Patterson; (C) W. H. Allan & Son, A. L. Patterson, A. L. Patterson; (D) W. H. Allan & Son, A. L. Patterson, A. L. Patterson.

Children's Classes

Pair of old Bantams—F. Kentner, John McKinnon, Bobby Sales.
Pair of young Bantams—F. Kentner, J. McKinnon.
Pair of old Pigeons—D. Wilson, D. Mills, F. Kentner.
Pair of Young Pigeons—D. Mills, F. Kentner, J. McKinnon.
Pair of Rabbits, A.O.V.—D. Wilson.

GRAIN

1 bus. Oats, Early—G. A. Leslie, T. Brownridge, W. E. Ford.
1 bus. Winter Wheat—W. O. Brownridge, R. H. Hunter, T. J. Brownridge.
1 bus. Barley, 6 rowed—J. C. Cunningham, T. J. Brownridge, H. Richardson.
1 bus. Oats, late—W. O. Brownridge, Harry Richardson.
1 bus. Beans, J. C. Cunningham, R. H. Hunter.
1 bus. Smooth Ann Barley—W. O. Brownridge, Donald Ismond, G. A. Leslie.
1 bus. Alsike—J. C. Cunningham.
1 bus. Red Clover—T. J. Brownridge, R. H. Hunter, G. A. Leslie.
1 bus. Timothy—J. C. Cunningham, G. A. Leslie, T. J. Brownridge.
10 Ears of Corn (Dent)—R. H. Hunter, Harry Richardson.
Sheaf of Wheat—W. O. Brownridge.
Sheaf Oats—T. J. Brownridge, H. Richardson.

WANT DDT? GO AND BUY IT

DDT, the insecticide about which there has been much discussion lately, has been freed for public sale by War-time Prices and Trade Board. DDT was, until now, under Board restrictions since it was not very plentiful but G. S. Peart, Administrator of Fertilizers and Pesticides, WPTB, explains that supplies have been improving and therefore it may now be sold for general civilian use.

Hamburg

Hamburg, Black—(A) C. Spence; (B) L. Ridler, C. Spence; (C) C. Spence, C. Spence; (D) C. Spence, C. Spence.

Hamburg Spangled—(A) Sunset Farm, F. Kentner; (B) Sunset Farm, F. Kentner; (C) C. Spence, F. Kentner; (D) C. Spence, C. Spence.
Hamburg, A.O.V.—(A), (B), (C), and (D), A. E. Waldie.

French

Houdans—(A), A. E. Waldie, C. Spence; (B) C. Spence, A. E. Waldie; (C) C. Spence, A. E. Waldie, A. E. Waldie; (D) C. Spence, C. Spence, A. E. Waldie.

Games

Game, A. V. Modern—(A) and (B), A. E. Waldie; (D) A. E. Waldie, A. E. Waldie.
Game, Old English Black Red—(B) and (D), L. Ridler.
Game, Old English, A. O. V.—(B), (C), and (D), L. Ridler.

Bantams

Game Bantam, A.O.V.—(D) A. E. Waldie.
Game, Bantam, Old English—(A) F. Kentner, Sunset Farm, A. E. Waldie; (B) Sunset Farm, A. E. Waldie, F. Kentner; (C) A. E. Waldie; (D) Sunset Farm, A. E. Waldie, L. Ridler.
Game Bantam, Old English, A.O.V.—(A) F. Kentner, F. Kentner; (C) F. Kentner.
Bantam Cochin, White—(A), (B), (C), and (D), F. Kentner.
Bantam Cochin, Buff—(A), (B), (C), and (D), Sunset Farm.
Bantam Cochin, Black—(A) and (B), Sunset Farm.
Bantam, Seabright—(A) Sunset Farm, L. Ridler, A. E. Waldie; (B) L. Ridler, Sunset Farm, A. E. Waldie; (C) A. E. Waldie; (D) L. Ridler, A. E. Waldie.
Bantam, Rose Comb—(A) and (B) F. Kentner, A. E. Waldie; (C) A. E. Waldie, F. Kentner; (D) F. Kentner, A. E. Waldie.
Bantam, Brahma—(A), (B) and (D) C. Spence.
Bantam, Cornish—(A) A. E. Waldie, N. A. Sinclair; (B) N. A. Sinclair, N. A. Sinclair, A. E. Waldie; (C) N. A. Sinclair, N. A. Sinclair; (D) A. E. Waldie, N. A. Sinclair.
Bantam Polish—(A) C. Spence, A. E. Waldie; (B) C. Spence, A. E. Waldie; (C) A. E. Waldie, C. Spence; (D) C. Spence, A. E. Waldie.
Bantam, A.O.V.—(A) L. Ridler, A. E. Waldie; (B) A. E. Waldie, L. Ridler; (C) A. E. Waldie, L. Ridler, A. E. Waldie; (D) A. E. Waldie, L. Ridler, A. E. Waldie.
Silkie—(A) L. Ridler, Sunset Farm; (B) Sunset Farm, L. Ridler; (C) and (D) Sunset Farm.
Barred Rock—F. Kentner, F. Kentner, W. H. Allan & Son.
New Hampshire, Red—W. J. Alexander.
White Leghorn—W. J. Alexander, F. Kentner, W. H. Allan & Son.

Bantams

Game Bantam, A.O.V.—(D) A. E. Waldie.
Game, Bantam, Old English—(A) F. Kentner, Sunset Farm, A. E. Waldie; (B) Sunset Farm, A. E. Waldie, F. Kentner; (C) A. E. Waldie; (D) Sunset Farm, A. E. Waldie, L. Ridler.
Game Bantam, Old English, A.O.V.—(A) F. Kentner, F. Kentner; (C) F. Kentner.
Bantam Cochin, White—(A), (B), (C), and (D), F. Kentner.
Bantam Cochin, Buff—(A), (B), (C), and (D), Sunset Farm.
Bantam Cochin, Black—(A) and (B), Sunset Farm.
Bantam, Seabright—(A) Sunset Farm, L. Ridler, A. E. Waldie; (B) L. Ridler, Sunset Farm, A. E. Waldie; (C) A. E. Waldie; (D) L. Ridler, A. E. Waldie.
Bantam, Rose Comb—(A) and (B) F. Kentner, A. E. Waldie; (C) A. E. Waldie, F. Kentner; (D) F. Kentner, A. E. Waldie.
Bantam, Brahma—(A), (B) and (D) C. Spence.
Bantam, Cornish—(A) A. E. Waldie, N. A. Sinclair; (B) N. A. Sinclair, N. A. Sinclair, A. E. Waldie; (C) N. A. Sinclair, N. A. Sinclair; (D) A. E. Waldie, N. A. Sinclair.
Bantam Polish—(A) C. Spence, A. E. Waldie; (B) C. Spence, A. E. Waldie; (C) A. E. Waldie, C. Spence; (D) C. Spence, A. E. Waldie.
Bantam, A.O.V.—(A) L. Ridler, A. E. Waldie; (B) A. E. Waldie, L. Ridler; (C) A. E. Waldie, L. Ridler, A. E. Waldie; (D) A. E. Waldie, L. Ridler, A. E. Waldie.
Silkie—(A) L. Ridler, Sunset Farm; (B) Sunset Farm, L. Ridler; (C) and (D) Sunset Farm.
Barred Rock—F. Kentner, F. Kentner, W. H. Allan & Son.
New Hampshire, Red—W. J. Alexander.
White Leghorn—W. J. Alexander, F. Kentner, W. H. Allan & Son.

DUCKS

Ducks, Rouen—(A), (B) and (C), W. H. Allan & Son.
Duck, Pekin—(A), (B), (C), and (D), W. H. Allan & Son.
Duck, Ind. Runner, A.O.V.—(A), (B), (C) and (D), L. Ridler, L. Ridler.
Duck, Mallard—(A) W. H. Allan & Son, A. L. Patterson, A. L. Patterson; (B) A. L. Patterson, W. H. Allan & Son, A. L. Patterson; (C) W. H. Allan & Son, A. L. Patterson, A. L. Patterson; (D) W. H. Allan & Son, A. L. Patterson, A. L. Patterson.

Children's Classes

Pair of old Bantams—F. Kentner, John McKinnon, Bobby Sales.
Pair of young Bantams—F. Kentner, J. McKinnon.
Pair of old Pigeons—D. Wilson, D. Mills, F. Kentner.
Pair of Young Pigeons—D. Mills, F. Kentner, J. McKinnon.
Pair of Rabbits, A.O.V.—D. Wilson.

GRAIN

1 bus. Oats, Early—G. A. Leslie, T. Brownridge, W. E. Ford.
1 bus. Winter Wheat—W. O. Brownridge, R. H. Hunter, T. J. Brownridge.
1 bus. Barley, 6 rowed—J. C. Cunningham, T. J. Brownridge, H. Richardson.
1 bus. Oats, late—W. O. Brownridge, Harry Richardson.
1 bus. Beans, J. C. Cunningham, R. H. Hunter.
1 bus. Smooth Ann Barley—W. O. Brownridge, Donald Ismond, G. A. Leslie.
1 bus. Alsike—J. C. Cunningham.
1 bus. Red Clover—T. J. Brownridge, R. H. Hunter, G. A. Leslie.
1 bus. Timothy—J. C. Cunningham, G. A. Leslie, T. J. Brownridge.
10 Ears of Corn (Dent)—R. H. Hunter, Harry Richardson.
Sheaf of Wheat—W. O. Brownridge.
Sheaf Oats—T. J. Brownridge, H. Richardson.

WANT DDT? GO AND BUY IT

DDT, the insecticide about which there has been much discussion lately, has been freed for public sale by War-time Prices and Trade Board. DDT was, until now, under Board restrictions since it was not very plentiful but G. S. Peart, Administrator of Fertilizers and Pesticides, WPTB, explains that supplies have been improving and therefore it may now be sold for general civilian use.

SQUIRRELS NUISANCE IN FOREST OF DEAN

GLoucester, England, (CP)—Grey squirrels, said by naturalists to have come from North America, have become the chief vandals in the Gloucestershire's Forest of Dean, since gamekeepers went away to war. They not only destroy trees but raid orchards, strip poultry pens, and bound into houses after food. They frighten women and children as they bounce through open bedroom windows and often they are found in kitchens.

A forestry commission official said that only a nation-wide offensive could do any good. Mass shooting parties were needed and nine pence a tail is being offered those who have permits to shoot. Grey squirrel shooting clubs can get cartridges free.

SCRATCHING PENS HOUSE COMPLAINT

LONDON, (CP)—How interesting! Rupert de la Bere (Cons Evesham) who complained in the House of Commons about the condition of pen nibs in Britain's post offices has been advised by the assistant postmaster general that as soon as the supply position improves there will be frequent renewals of nibs. "In the meantime," said the assistant, "I will call attention to the need for keeping a close watch on the condition of the pens allocated for public use."

J. A. ELLIOTT

Licensed Auctioneer

For the Counties of Halton and Peel

Phone 155r21
Rural Route No. 3 MILTON

MILTON WELDING

Electric and Acetylene Welding

Repair Welding of All Types

Portable Equipment

PHONE — 348

MARY ST.—MILTON

Opposite Dr. Heslop's

GIVE CLOTHES TO WAR VICTIMS
OCT. 1st to 20th
Take your contributions to your nearest
Post Office or any official
COLLECTION DEPOT.

"SALADA" TEA

Electrical Contractors

Full Line of

ELECTRICAL APPLIANCES RADIOS REFRIGERATORS

WASHING MACHINES

Radio Service a Specialty

BAILEY and TOEWS

Radio Sales & Service

Electrical Appliances

MILTON, ONT.

PHONE 259

TIRES! TIRES! TIRES!

Bring Your Tire Troubles To Us

We have installed New and Modern Vulcanizing Equipment for repairing All Sizes of Passenger and Truck Tires.

FACTORY TRAINED PERSONNEL

ALL WORK GUARANTEED

Johnsons' Garage
PHONE 174W

ROAST TURKEY
Stuff the bird with ample tasty dressing (four quarts for a 14-lb. bird) Place bird on one side of the breast in a roasting pan. Do not add any water. Roast in a preheated oven of 325 degs. allowing 20 minutes per lb. When bird is half-cooked, turn, baste and sprinkle with salt. Cover during latter part of cooking period with lid or moist paper.

RELISH TRAY
Match-like strips of yellow turnips. Sliced radishes cooked in thin chutney sauce. Sliced cucumbers dipped in spiced beet juice. Green tomatoes sauted in dripping.

GEORGIAN SWEET POTATOES
Cook 2 lbs. sweet potatoes for 30 mins. Drain, peel and mash. Add 4 tbsps. baking fat, 4 tbsps. molasses, salt and hot milk and beat smooth. Put in a casserole and heat in a hot oven for 10 minutes.

SAVOURY ONIONS
9 large onions, 1 tbsp. chopped green pepper, ½ cup grated old cheese, salt and pepper. Place the peeled onions in greased baking dish and add the listed ingredients. Cook in preheated oven of 350 degs. for 40 mins. or in a double boiler on top electric element.

PUMPKIN PIE
1½ cups steamed and sieved pumpkin; ¾ cup of brown sugar; 1½ teaspoons cinnamon; ½ teaspoon vanilla extract. Beat the mixture thoroughly and when cool add: 2 well beaten eggs, 2 cups of thin cream or top milk. Line an extra deep 9-inch pie tin with rich pie crust; leave a fluted edge. Pour in the pumpkin to the top of the crust; it will shrink in baking. Bake in a hot oven 475 degs. F. for 10 mins. reduce heat to 350 degs. F. and continue baking for another half hour until a golden brown.

TAKE A TIP
1. Cut squares of fresh hot gingerbread and place on individual serving plates. Place a spoonful of hot or cold fresh applesauce on top and serve.

2. To make sure meringues do not become watery, roll sugar fine and sift small quantities into egg whites which have been beaten to the frothy stage. Beat only until mixture will stand in peaks.

3. Cut slices of bread into shapes and toast slowly to tempt children who are convalescing.

4. For a Fruit Delight soften 1 pkg. gelatine; mash a banana and add ½ gelatine; stir in 2 cups hot fruit juice and place pieces of cubed fruit in mould when properly set.

THE QUESTION BOX
Mrs. B. G. asks: Can you make a cottage pudding without sugar?
Answer: You can make a feathery plain cake without sugar and serve with a fruit juice sauce thickened with cornstarch and sweetened while hot with sugar substitute. Do not add too much (¼ grain tablet for 1 tsp. of sugar).

Mrs. D. M. asks: How do you prevent cauliflower from turning grey?

Answer: Prepare and soak in cold water to draw out any insects. Cook whole in a small quantity of rapid boiling salt water for 25 mins. only—or in small flowerets for 10 minutes.

Mrs. S. N. says: Applesauce turns brown if it is cooked in a tarnished saucepan.

Offer Free Plans For Root Cellar

Although there are many effective ways of storing root crops on the farm, the root cellar has proved one of the best particularly in districts where low temperatures are common. A root cellar is not costly to build, and what outlays there is will soon be repaid in the savings of roots and vegetables from loss and wastage through moisture and decay. Old lumber and materials at hand may be utilized.

To the farmer who has a root cellar, the time has come once more to make certain that the ventilating system will be in working order during the coming winter. To the farmer who has not a root cellar and is thinking of making one, the Dominion Department of Agriculture has made available publication 708 entitled "A Practical Root Cellar". In it are specifications of plans for a farm root cellar, ground floor side and front elevations, together with information and directions as to labour location, temperature, humidity, and ventilation. A copy may be obtained by writing to Dominion Department of Agriculture, Ottawa.

TRUCKS FOR FARMERS

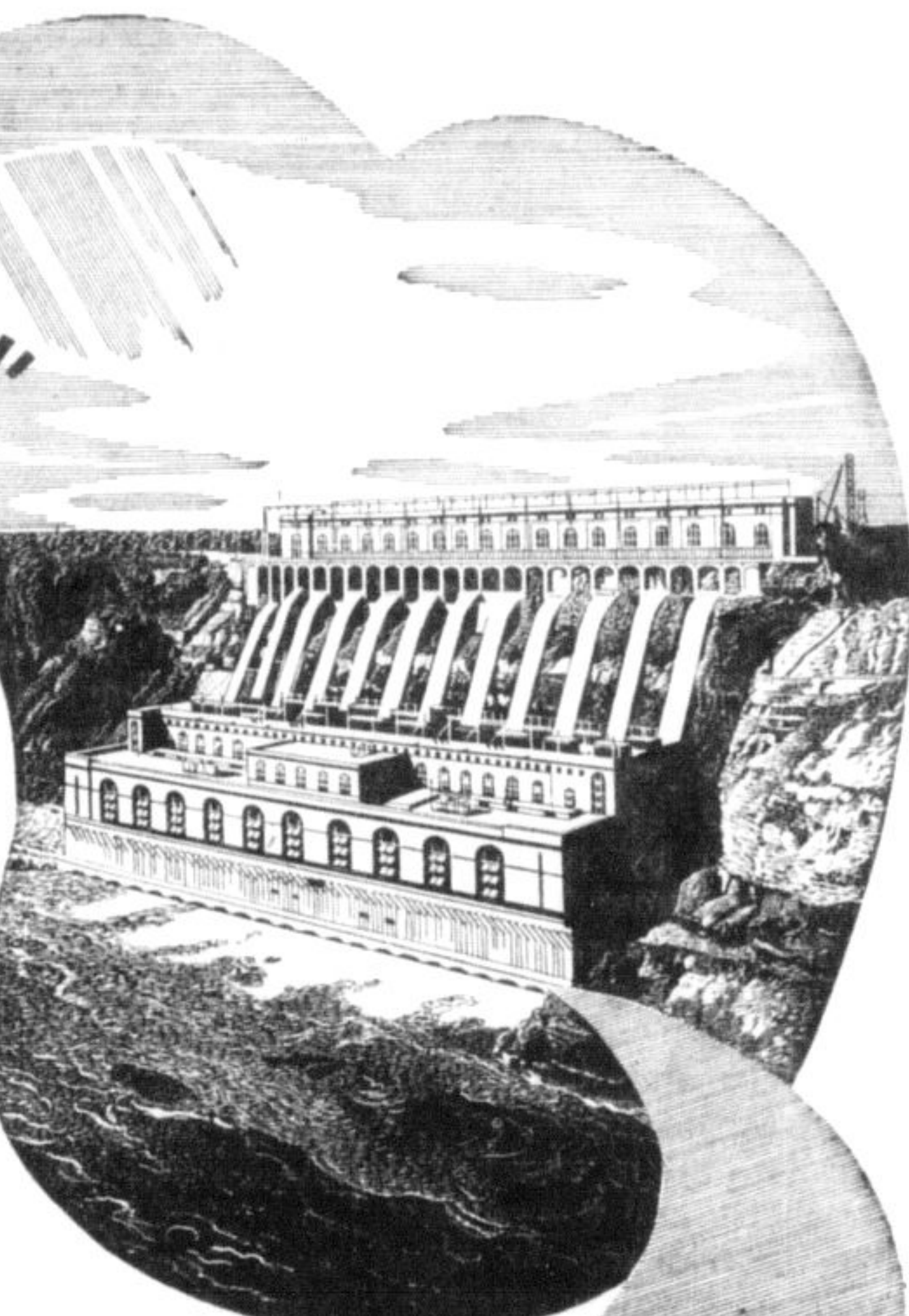
MONTREAL (CP)—Quebec farmers will soon have an opportunity of buying surplus army four-wheel drive trucks through the Quebec Council of Farm Forums, according to R. Alex Sim, Council Secretary.

HYDRO provides fast, dependable "Made to order" SERVICE

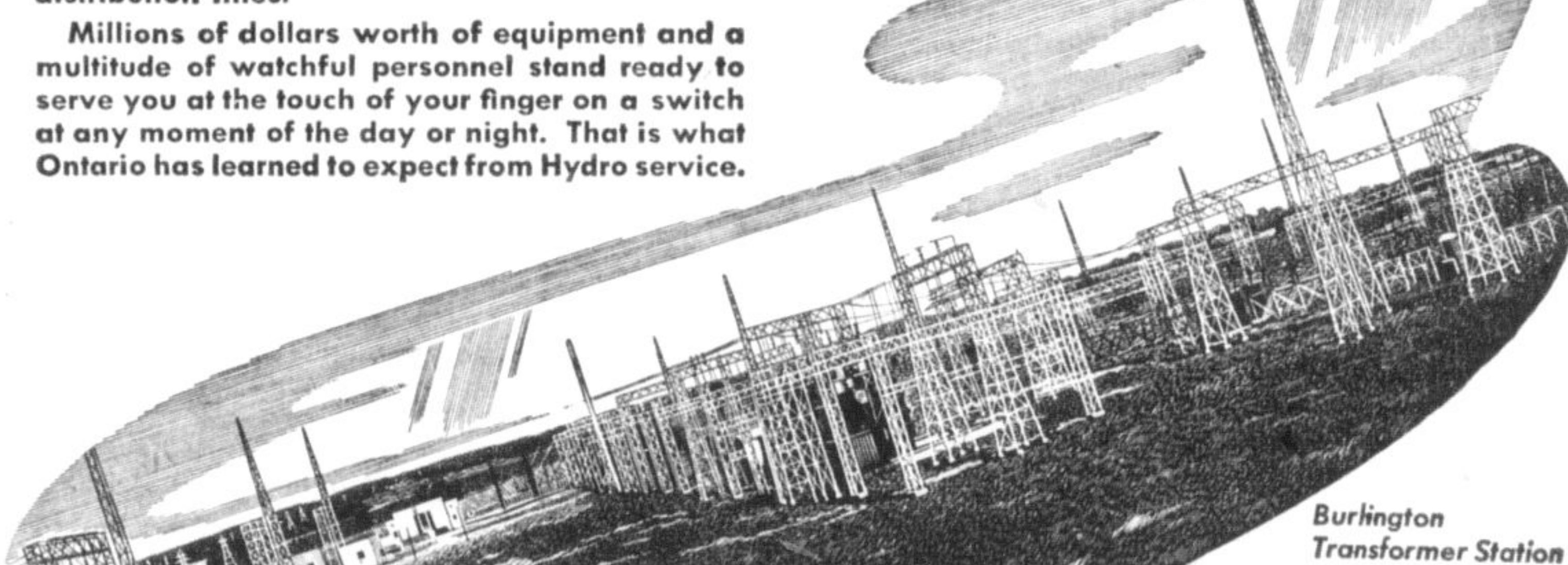
Do you realize that Hydro power must be made to your order . . . made and delivered to you so quickly that it would seem to be always there? Electricity cannot be stored. It must be made within a tiny fraction of a second of the time it is used. The flow of water to the generators is controlled by sensitive automatic gates, so as to make only enough for the demands of the moment.

Whenever you flip a switch, you use electricity before the water which made it can leave the power house. Your order is received and filled faster than a good camera can wink its eye. Yet the power comes to you through a giant transformer station, a local distribution station, a small transformer near your home . . . all connected by many miles of transmission and distribution lines.

Millions of dollars worth of equipment and a multitude of watchful personnel stand ready to serve you at the touch of your finger on a switch at any moment of the day or night. That is what Ontario has learned to expect from Hydro service.

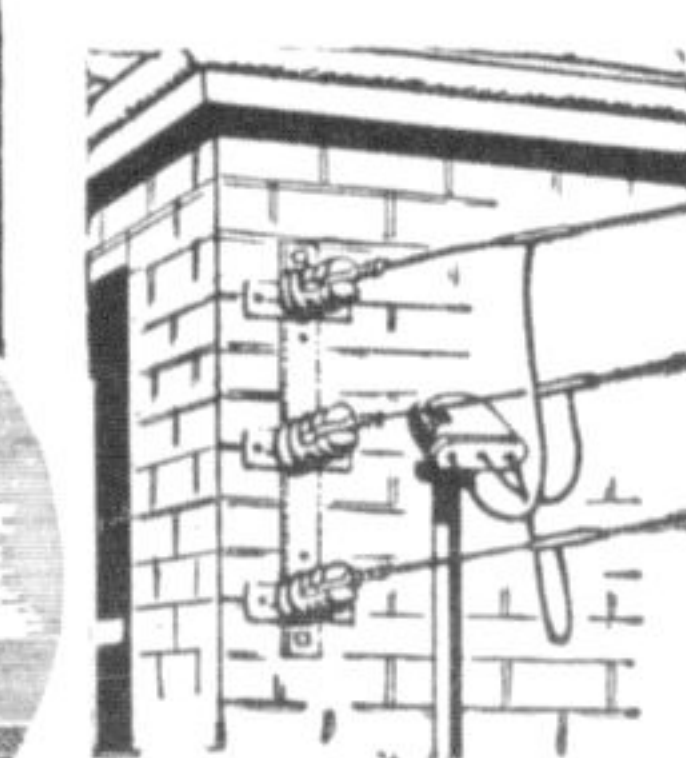


Queenston-Chippawa Generating Plant



Burlington Transformer Station

ONLY THIS ONE PART DEPENDS ON YOU



Your house must be adequately wired if you are to have full benefit from the electricity you may want to use. If your place is wired for a range and a water heater, you can assume that you have enough wiring from the small transformer to your house. From there, be sure that you have enough circuits and plenty of outlets conveniently placed in every room. Remember that any one outlet can supply only a limited amount of power efficiently and safely. Remember, too, that you will want an ever-growing number of electrical conveniences in the years to come. The economical time to wire adequately is when you are building or making major alterations. Plan now for your electrical future by wiring completely.

A Municipal Distribution Station

THE HYDRO-ELECTRIC POWER COMMISSION OF ONTARIO