

HAYWARD TRANSPORT

Daily Direct Service
TORONTO — MILTON — HAMILTON
Local and Long Distance Cartage and Moving.
P-C-V CLASSES A-C-B-H
TORONTO Ke 6212 MILTON 318 HAMILTON 4-0783

MILTON DISTRICT CO-OPERATIVE

FLOUR COAL COKE
Purina, Co.-Op. Master Feeds
Oil Cake, Soyabean, Cotton Seed, Bone Meal
SPECIAL
Malple Leaf Bread Flour } 98 lb. bag \$3.90
Cream of the West } 24 lb. bag 1.00
OFFICE 127 PHONES STORE 16

SPRING CHICK STARTER

PIONEER - QUAKER
NONE BETTER
PEAT MOSS \$2.60 PER BALE
Supplemental Hog Feeds
For Quick Finishing

COAL CEMENT LIME
Delivered Anywhere

PHONE 48 R. S. ADAMS NIGHTS 339

SPECIAL!

3-8 x 1 1/2 Clear Oak Floor \$62.00 per M. feet.
Board measure, plus sales tax
or
Enough to cover room 10x12, \$10.85, including tax.

The Georgetown Lumber Co. OF MILTON, ONT.
W. C. KENTNER, Manager

MILTON FLOUR MILLS

For the Best Results in Live Stock Feeding it is essential to

"FEED FRESH FEED"

Ground Cereals Oxidize, Vitamins Deteriorate so feed
STARLIGHT PREPARED FEEDS
to your

POULTRY AND LIVE STOCK
"Always Fresh from the Mixer"

Starlight Chick Starter \$2.95
Ivory Bread Flour, 98's 3.75
Milton Pastry Flour, 24's 4.60
Oil Cake Meal, 39% 2.40
Scratch Grain, 3 grain, per 110 lbs. 1.90
PHONE 356 FOR QUICK DELIVERY.

THE RED & WHITE STORES

Eat Fleischman's Yeast Regularly
For Your Spring Tonic

Listen to:
"THE RED LEDGER"
C.B.L.—9.00 p.m.—Wednesday

Peas, Square Deal, 17 oz. tin, 2 for 19c
Bantam Corn, Garden Patch, 17 oz. tin, 2 for 19c
Tomatoes, King's Choice (hand packed) lg. tin 10c
Falcon Peaches, per tin 11c
Spinach, Red & White, choice quality, per tin 10c
Biscuits, Weston's, per lb 15c
Biscuits, McCormick's Pineapple Sandwich, per lb. 19c

Niblets, Del Maiz, 2 tins 25c
Peas, Green Giant, 2 tins 29c
Pork & Beans, Libby's, 21 oz. 2 tins 19c
Tomato Juice, Green Giant, 20 oz. tall, 2 tins 17c
Strawberries, Libby's, choice quality, per tin 15c
Soup, Red & White, tomato or vegetable, 3 tins 25c
Diced Beets or Carrots, Gold Medal, 3 tins 25c
Fluffo Shortening, purely vegetable, lb 13c
Oranges, Blue Goose, large size, doz 27c

PHONE 30 R. CUNNINGHAM WE DELIVER
"Quality always higher than the price"

HAVE YOU RENEWED YOUR SUBSCRIPTION?

PRINCESS THEATRE

Bill Boyd and George Hayes in
Clarence E. Mulford's
"Texas Trail"
(WESTERN)
Poppe, — I Like Babies and
Infinks.
Sport. — Pick Your Favorite.
Variety. — Inventor,
Pictorial No. 2.
Paragrapic. — Accent on Beauty
Phil Spitalny and Band.

TUESDAY - WEDNESDAY
SPECIAL!
Oscar Homolka and Frances
Farmer in
"Ebb Tide"
Under auspices of Milton Fire Dept.
Musical. — Okay Rhythm.
Novelty. — Cowboy Shorty.
Tickets on Sale from any member of
the Fire Department

COMING!
Friday & Saturday, Mar. 25 & 26
Shirley Temple in
"HEIDI"
Matinee Friday at 4:15

A GOOD SAP RUN.—According to the opinion of a noted district syrup producer, a successful maple syrup season is looming just ahead. He says that the frost has penetrated deeply into the ground and this is always a good omen to syrup men. In the event of an early spring, the run of sap will be heavier than for many a season past. However, if winter hangs on for many weeks, the run may prove disappointing. Here's hoping that spring is just around the corner.

A euchre will be held in S. S. No. 17, Esqueving, Milton Heights, on Friday evening, March 18th, at 8:15 p.m., under the auspices of the school board. Admission, Adults 25c, children 10c. Lunch will be served.

WERE FORCED INTO WAR.—Dr. Jessie McBean, home on furlough from China, was guest speaker at the regular meeting of the W.M.S. of Knox Presbyterian Church on Thursday last. Vivid descriptions of Chinese life were given by Dr. McBean, who stated that much progress had been made in the past few years. She stated present conditions are heart-breaking. Both the Chinese and Japanese were suffering as neither could bring a war but they were forced into fighting just because it seemed to be in the air, she claimed.

DON'T FORGET THE MILTON K. A. Rover Crew's Semi-Monthly Dance in the town hall on FRIDAY evening, Mar. 26. Come and bring a friend. 50c per person. Brantport's Harmony 7 Piece Orchestra will provide excellent music for this enjoyable event.

WAR ON CAR DRIVERS WITHOUT LICENSES.—Hard on the heels of Attorney-General Gossart's announced war on non-licensed car drivers, Provincial Constables George Cookman and A. J. Oliver, of Milton, haled two more offenders before Magistrate W. Woodliffe in police court yesterday morning. Holding first court in his recently enlarged bailiwick, his Worship found James McMurray and Ross Mitchell, of Campbellsville, guilty of failing to produce proper permits and fined them \$3 and costs each. The war, according to Constables Cookman and Oliver, will continue.

INTERIOR DECORATOR.—First class Painting and Paper Hanging, Sun-worthy and Sundry-1 Wall Papers. These samples include many attractive and decorative marmur papers, the style leaders for 1938. Estimates given. Will call personally with samples. Wm. H. Clement, Main St. phone 238w.

TOWN COUNCIL.—At Tuesday evening's regular meeting of Milton town council, Mrs. Elizabeth C. Crowe, a letter of thanks from a relief recipient, who commended the relief committee for its efficiency and understanding of the problems confronting it. It was the first letter of thank the Council received from a relief recipient and the Clerk, who is also Chairman of the relief committee, said other relief recipients might do well to follow in the footsteps of the grateful letter-writer. A grant of \$20 was made to the Salvation Army, and the Music Festival Committee was granted \$10. The next meeting of the council will be held on Tuesday, April 1st.

GRAND CONCERT.—A grand concert, under the auspices of Knox Presbyterian Church choir, will be held in the church, on Friday, March 18th. Dramatic Impersonations of Dickens' characters will be presented by Rev. N. H. Millard, the organist, Soloist, Ruth Gibson, of O.K.O.C. Soprano. Also a cantata, "Paul", a Prisoner of the Lord (by Sir Adam Geibel), by the Church Choir. Mr. J. W. Evans, conductor. Miss E. Dewar, organist. Mrs. S. W. Gately, reader. Solists, Misses Isabel Anderson and Reta Navior, and Messrs. Wm. Morrison, Robert Cooke and Grant Fraser. Judge Munro, chairman. Music begins at 8 o'clock, sharp. Admission 25c. Proceeds in aid of the choir fund.

You don't have to go to the big city to win success. A 20-year old chap in Seaforth has developed a stamp business in the basement of his home, and has customers throughout the world. He buys and sells stamps through the medium of a magazine he publishes with a paid circulation of 4,000 copies each summer. He goes on a trip to Europe and Africa in the interest of his growing business.

Have a weekly letter from home sent to your relatives. Send them THE CHAMPION—only \$2 a year in advance.

WANTED

Big Fat Hens for Jewish Easter trade. Will pay up to 17c per lb. alive. Phone Allison's Meat Market 42; J. Randall's Meat Market 143, or Galloway's Meat Market 302, or write Moses Zener, 402 Dovercourt Road, Toronto.

ST. LAWRENCE GROCERY

Fresh Fruit and Vegetables
AT REASONABLE PRICES
SPECIAL PRICES
Electric Light Bulbs, 40w and 60w
Special, 2 for 21c
DeLuxe Jelly Powder, 3 and dish 87c
New Stock of St. Lawrence Pastry
Flour, Lily White, Full Wheat,
24 lb. bag 56c
Dates, 4 lbs 25c
Fig, 2 lbs 21c
Red Rose and Cute Salmon, tall
tins, 3 for 25c
Libby's Pork & Beans, 3 tins 25c
Campbell's vegetable and Noodle
Soup, 2 tins 21c
Hi-Grade sweetened Pickles, 17c
Home and Castle Floor Wax, tin 23c
Infant's delight Toilet Soap, 4 bar 17c
Oxo Cubes, 4 cubes 9c; 10 cubes 23c
Special prices on fresh fruit, vegetables and cooked meats
FREE DELIVERY : PHONE 10
A. RESTIVO

CORA PERRY'S GROCERY

Special Wax or Green Beans, 3 for 25c
Home Brand Apple or Strawberry Jam, each 23c
Pure Damsen Jam, Ed. Smith's, 2 lbs 25c
Grimbsy Dill Pickles, 30 oz. bot 23c
Grimbsy Sweet Mixed Pickles, 12 oz. glass 15c ;
2 for 29c
Country Kist Peaches, 2 tins 25c
Belle City Brand Peas, tin 10c ; 2 for 19c
Country Kist Corn, tin 10c ; 2 for 19c
Glenwood Choice Quality Raspberries, in heavy
syrup, tin 15c ; 2 for 29c
Infant's Delight Soap, per bar 6c 3 for 17c ; 4 for 18c
Large pkg. Rinso and cake of Lifebuoy Soap 24c
2 cakes Kirk's Castile 5c when you buy 6 bars of
P. & G. White Napha, all for 28c
Seedless Grapefruit, 6 for 25c
Nice Size Oranges, doz 20c
Potatoes, per bag 69c

Celery Lettuce Tomatoes :: Free Delivery

DIED

Kingsbury.—At the home, lot 27, concession 3, Nesingwera Township, on March 19, 1938, Elizabeth Kingsbury, widow of the late Amaziah Kingsbury, in her 82nd year.
—Grandaughter.

IN MEMORIAM

Ford.—In loving memory of Frances Ford, widow of the late Jas. Ford, of Trafalgar, who died Mar. 19, 1935.
—Grandaughter.

Agnew.—In loving memory of a dear husband and father, Edward Agnew, who passed away Mar. 19th, 1937. Thought is deeper than all speech, Feeling is deeper than all thought, Sadly missed by wife and family.

In loving memory of our dear brother, Edward Chester Cardinell, who passed away March 19, 1938. Sweet memories may linger forever, Time cannot change them till we're true; Years that may come cannot sever Our loving remembrance of you. Sadly missed by sister Elizabeth, Sidney and Family.

In loving memory of our dear brother Edward Chester Cardinell, who passed away March 19, 1938. In our home he is fondly remembered, Sweet memories cling to his name, Those who loved him here in life sincerely. Still love him in death the same. Sadly missed by sister Hazel and Roll Family.

Are you hungry for new of Milton and district? Read THE CHAMPION!

FARM FOR SALE

One mile from Milton, 50 acres or so in alfalfa and 12 acres of fall wheat. Apply Mrs. A. D. McDuffee.

House and Lots for Sale

Brick house, 10 rooms, all modern conveniences, and about 4 acres of land, in Peru; large brick stable and large hen houses; also brick house, 6 rooms, in Peru, with 4 acres of land, garage. Apply Mrs. C. E. Hill, R.R. 3, Milton.

J. A. ELLIOTT

Licensed Auctioneer
For the Counties of Halton & Peel
Phone 154-r-11 MILTON
Rural Route No. 3

NOTICE TO CREDITORS

JAMES COULTER ESTATE.
All claims against this estate to be sent to Edmund Syer, Administrator, on or before March 21st, 1938.

T. F. CHISHOLM
Licensed Auctioneer
For Halton County
Phone 99-21
R.R. No. 3 MILTON

H. WHEELER

Teacher of
PIANO - VIOLIN
GUITAR

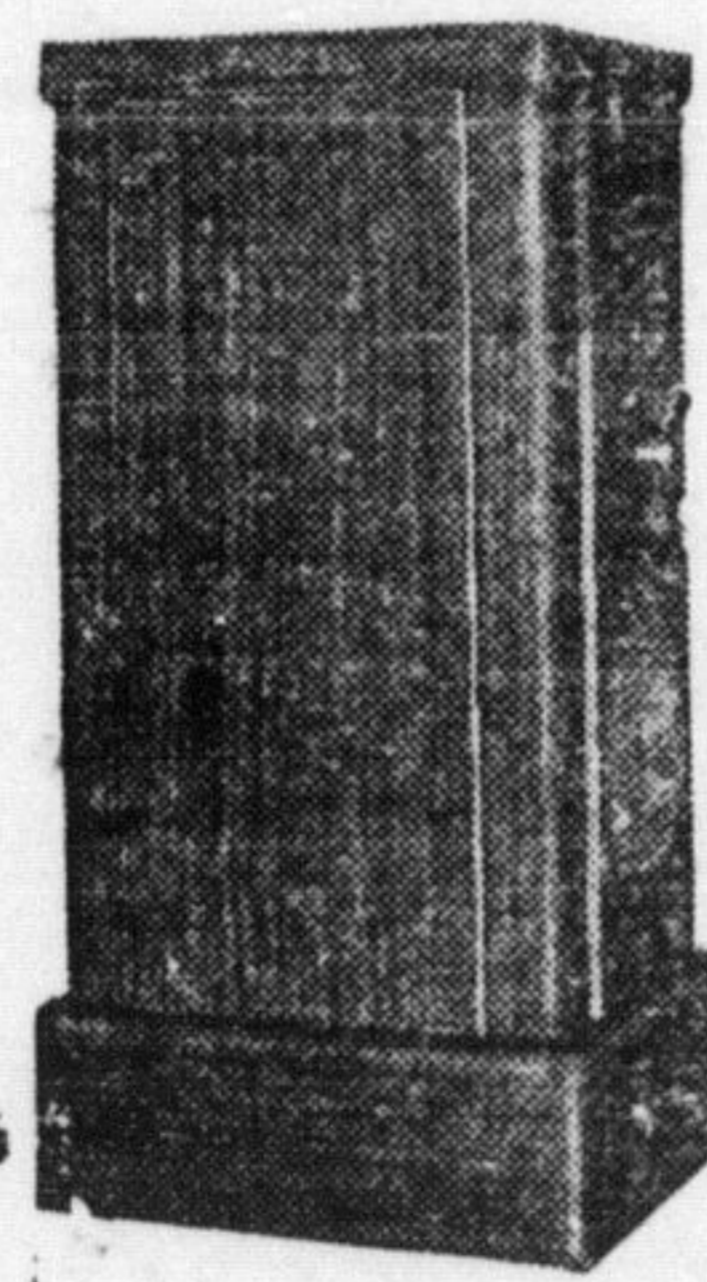
Piano Tuning and Repairing
PHONE 24 MILTON

S. A. FAY

Plumbing,
Heating and
Tinsmithing
PHONE 205
MAIN ST., MILTON, ONT.

AIR CONDITION

Your Home or Office
with a



Renfrew Air Conditioner
MILTON HARDWARE

WALKER STORES, LIMITED

Main Street — MILTON — Phone 9

GORDON SHIRTS \$1.00

Opportunity for the man who usually pays \$1.55 & \$1.95 for his Shirts

Gordon Shirts

Fine Fabrics—pre-shrunk, fine combed Broadcloth.

Fine Patterns—Richly-toned English stripes, printed and woven checks included,

Fine Make—cut by experts and pressed by hand! Good quality pearl buttons are used and fine count stitches, characterizes the seams.

Collar Styles—Soft-collar-attached, Laundry Fused collar, separate collar styles.

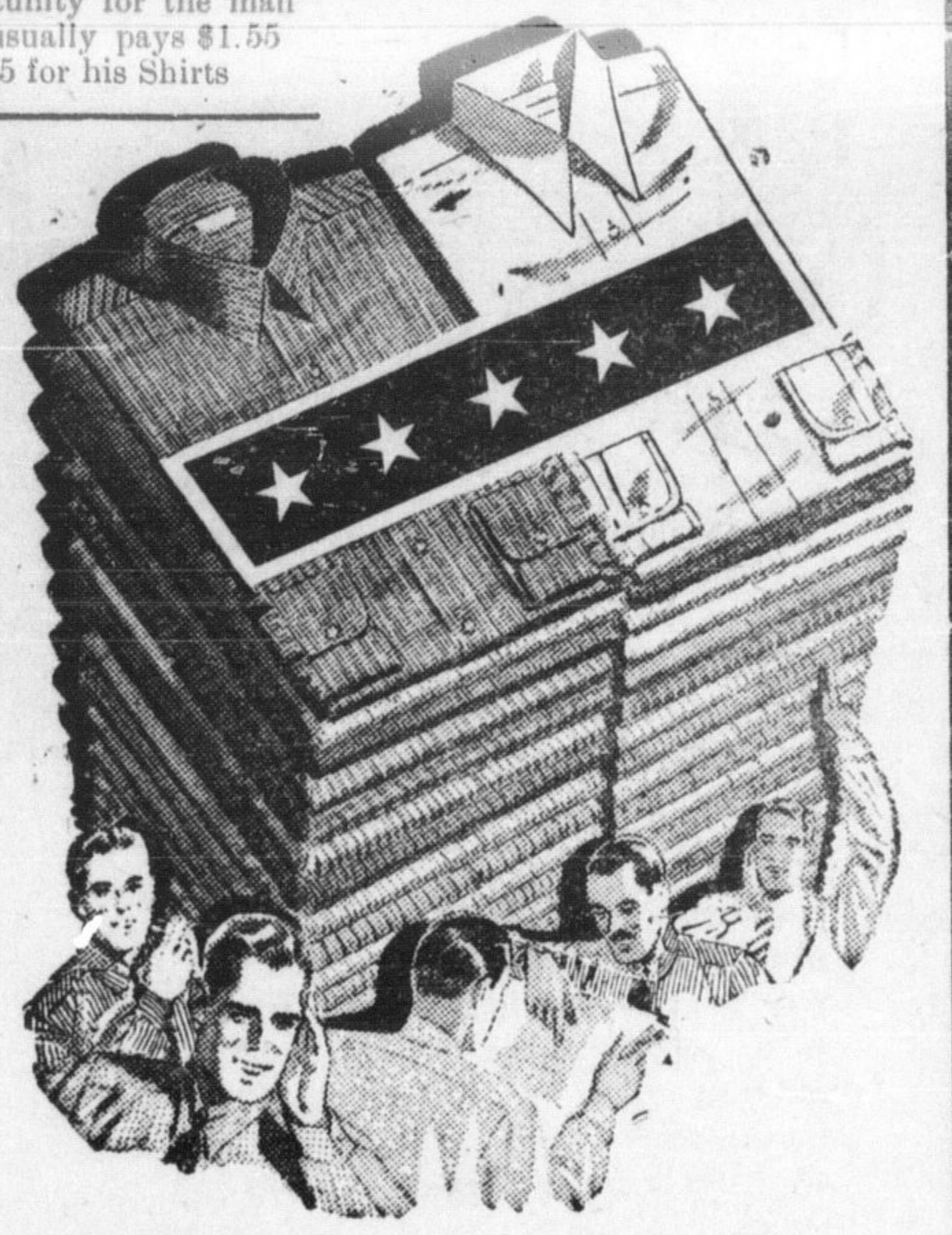
Sizes 14 to 17 1/2

Select a quantity of these SHIRTS during this Sales Event.

\$1.00 EACH

On Display at

WALKER STORES, LIMITED



ST. PAUL'S UNITED CHURCH

Sunday, Mar. 20th,
10 a.m.—The Sunday School.
11 a.m.—Morning Worship conducted by the minister. Theme: "Two Great Privileges."
7 p.m.—Evening Worship, Theme: "On the Side Line."
Wed. at 8 p.m.—Midweek service for prayer, praise and study. A cordial welcome is extended to all who care to worship with us.

KNOX PRESBYTERIAN CHURCH

11:00 a.m.—Morning Worship.
11:25 a.m.—Junior Sunday School.
12:15 p.m.—Senior Sunday School.
7:00 p.m.—Evening Worship.
Minister for Sunday next, March 20, will be the Rev. J. B. Skene, late of Emanuel Presbyterian Church, Toronto, Clerk Toronto Presbytery.

MILTON GOSPEL TABERNACLE

We praise God for last Sunday's meeting. We invite you to send your children to the Tabernacle Sunday School, Peter Turnbull, of Toronto, will be the preacher for Sunday. The morning meeting at Mrs. A. Mount-ain's.
Sunday School at 2:30 p.m.
Evening Worship at 7:30 p.m. J. Mountain.

ST. PAUL'S CHURCH W. M. S.

The March meeting of the W. M. S. of St. Paul's United Church, was held on Wed., March 9th, at the home of Mrs. T. C. Daley, Victoria Ave. Miss Grace Wilford, President, took charge of the meeting. The devotional period was conducted by Mrs. Dolby and Miss Hadley. It was a very interesting and helpful service. The topic was very ably given by Mrs. P. Lamb, dealing with the educational department of the mission work in our foreign fields. Mrs. Brownrigg gave a very beautiful solo, accompanied by Miss Mabel Atkinson. Secretaries of the various departments reported on their work and the meeting closed with prayer by the President. A pleasant time was spent in social converse, and tea was served by the hostesses, Mrs. Daley and Mrs. Harris. The April meeting is to be held at the home of Mrs. Gilroy, Queen St., on April 13.

Read THE CHAMPION, the newest and best advertising journal in Halton county. It brings news, when it is news—reliable and interesting—in practically every home in the community. The price is only \$2 a year—in advance. It is \$2.50 in the United States—also in advance.

Galbraith's Dry Goods Store

HERE TO-DAY! The New Wall Papers

You will not need to go out of town for your WALL PAPERS

New Designs New Prices Sun-Tested

PHONE 26 GALBRAITH'S MILTON

Switch to Dodge and Save Money

A Great Car at a Low Price
Bargains in Used Cars

1936 Ford Coach, small mileage | 1937 Dodge DeLuxe Coach
1934 Chev. Coach | 1935 Chev. Maple Leaf Truck
1932 Ford Coupe | 1935 Ford Truck

Get our prices on TIRES and ACCESSORIES.

We are distributors for Canadian Tire Corporation for Milton and district.

J. W. HIGGINS Phone 171 MILTON

WORK SHOES

All Made by Canadian Workmen
Sisman's, Greb's, Valentine - Martin, Iron Shoe

Genuine Regulation Army Solid Leather with built in arch support \$4.50
Full Grain Mennonite Upper, Full Fitting, outside counter, solid leather \$4.45
Full Grain Menno, Upper Solid Leather insole with panco sole \$2.98
Brown Army Boot, full double sole, heel plate, outside counter \$4.95
Sisman's Solid Leather Menno, Top, outside counter. \$2.98
Same Shoe with panco sole \$2.98
Special Good Quality Split Leather Upper, panco sole with leather insole, full leather slip sole \$2.25

Expert Repairing Scissors Sharpened

PHONE 4 GEO. KIBLER MILTON

Select GROCERIES

PERSONAL SERVICE

FANCY ICE DUMP

Rice 4 lb. .25

No. 1. Cooking Onions
Special per lb. 5c
Imported Head Lettuce
Special 2 for 11c
Choice Celery Hearts,
Special 2 bunches 27c
New Texas Beets, 2 bun. . 9c
New California Carrots
2 bunches 11c
New Texas Cabbage, 2 lbs. 9c
Choice Oranges and Lemons

DOMINION

GLASSCO'S
PEACH, CHERRY, RASPBERRY,
and STRAWBERRY

JAMS

OR CRABAPPLE JELLY
with Pectin

YOUR CHOICE
32-oz. Jar .25

Value Effective March 14-19.

GLASSCO'S PURE ORANGE Marmalade 32-oz. Jar .23

MACARONI lb. 5
ROLED OATS lb. 5
COCOANUT lb. 19
BLACK TEA 1/2-lb. Pkg. 32
PEKOE TEA 1/2-lb. Pkg. 34
BLACK TEA FINEST QUALITY 15-lb. Pkg. 39
PRINCESS SOAP FLAKES Lge. Pkg. 15

Theo. McJennett
Manager

DOMINION STORES LIMITED