

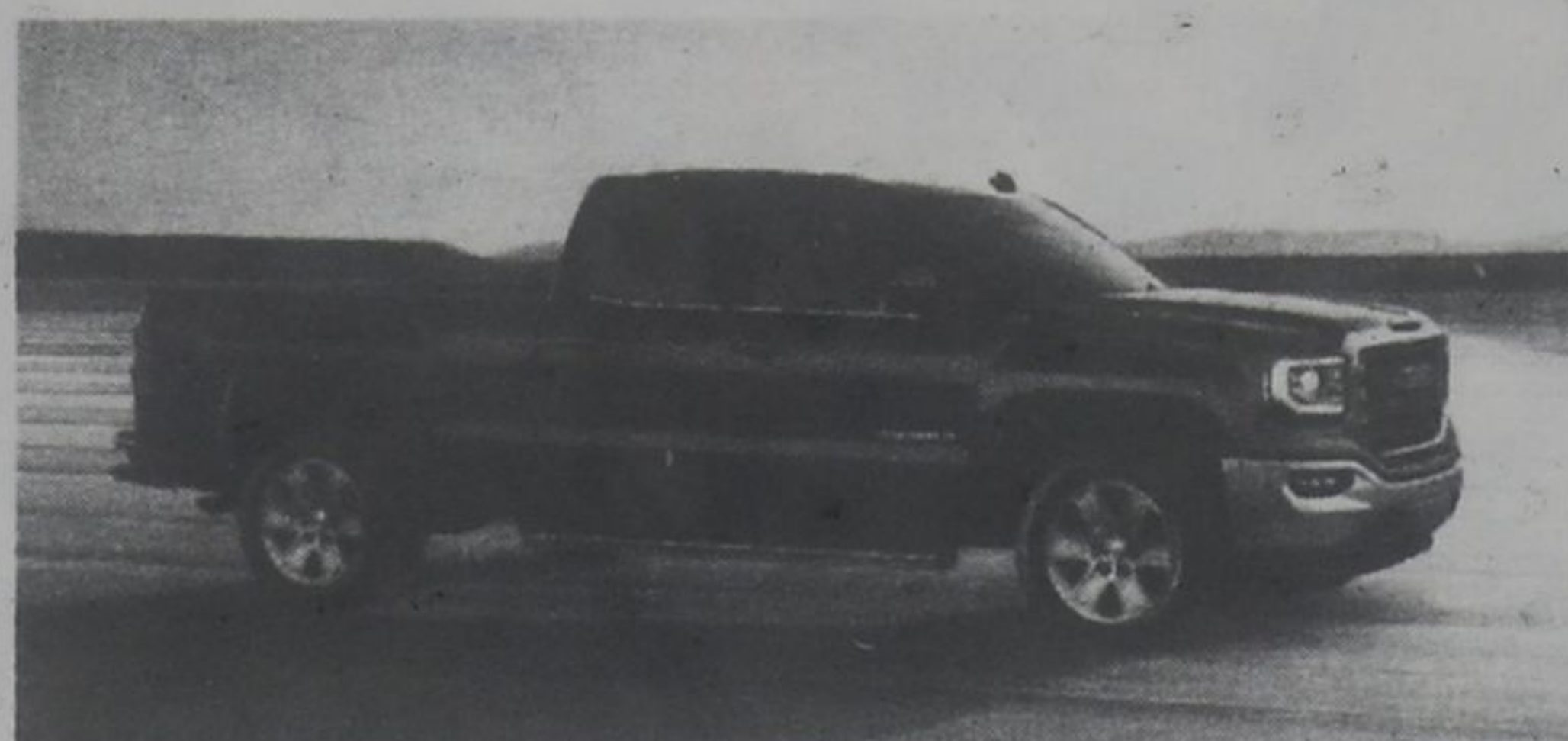
**GMC**

**2019 NEXT-GENERATION  
SIERRA 1500  
CREW CAB ELEVATION**

**WINTER  
CLEAROUT**



**0% FOR UP TO 72 MONTHS FINANCING**  
**+\$7,000 TOTAL VALUE<sup>^</sup>**



**2019 SIERRA 1500 LIMITED DOUBLE CAB**

GET **25%** OF MSRP CASH PURCHASE CREDIT ON NEW IN-STOCK 2019 MODELS<sup>o</sup>

LIMITED AVAILABILITY WHILE SUPPLIES LAST.



**2019 ACADIA DENALI**

**0% FOR UP TO 84 MONTHS<sup>^</sup> FINANCING**



**2020 TERRAIN SLE FWD ELEVATION**

LEASE FOR \$185 BI-WEEKLY, THAT'S LIKE **\$93** AT **1%** WITH **\$0** WEEKLY FOR 48 MONTHS DOWN PAYMENT

**LOADED WITH FEATURES LIKE:**

GMC PRO SAFETY<sup>®</sup> TECHNOLOGIES, HEATED FRONT SEATS AND REMOTE START, AVAILABLE SMART WATCH CONNECTIVITY AND AVAILABLE HANDS-FREE POWER PROGRAMMABLE LIFTGATE

**GMC PRO GRADE PROTECTION:**



**COMPLIMENTARY 2-YEAR / 48,000 KM LUBE-OIL-FILTER MAINTENANCE ON 2019 MODELS<sup>o</sup>**



**5-YEAR / 100,000 KM POWERTRAIN COMPONENT WARRANTY COVERAGE ON 2019 MODELS<sup>o</sup>**



**AVAILABLE BUILT-IN 4G LTE WI-FI<sup>®</sup> HOTSPOT (DATA PLAN REQUIRED)<sup>o</sup>**

**FIND YOURS TODAY AT [GMCOFFERS.CA](http://GMCOFFERS.CA)**

Limited time offer which may not be combined with certain other offers. Conditions and limitations apply. See Dealer for full program details. These offers may not be redeemed for cash and may not be combined with certain other consumer incentives. Void where prohibited. General Motors of Canada Company (GM Canada) may modify, extend or terminate offers for any reason, in whole or in part, at any time, without notice. Dealers are free to set individual prices. Credits vary by model. For a limited time only on select vehicles to qualified retail customers in Canada. On approved credit from select lenders. Participating lenders subject to change. Rates from other lenders will vary. Some trims may have effective rates higher than 0%. <sup>o</sup>Offer available to qualified retail customers in Canada on select vehicles purchased and delivered from December 3—January 2, 2020. 0%/0% purchase financing (10%/0% APR) offered on approved credit by TD Auto Finance Services, Scotiabank<sup>®</sup> or RBC Royal Bank for 84/72 months on eligible new 2019 Acadia Denali/2019 Next-Generation Sierra Crew Cab Elevation models. Participating lenders are subject to change. Rates from other lenders will vary. Down payment, trade and/or security deposit may be required. Monthly payment and cost of borrowing will vary depending on amount borrowed and down payment/trade. Example: \$52,795/\$51,475 financed at 0%/0% nominal rate (0%/0% APR) equals \$629/\$692 monthly for 84/72 months. The offer includes \$650/\$2,650 Cash Delivery Allowance (tax exclusive) and \$1,750/\$2,850 finance cash (tax exclusive). \$0-\$1,000/1ST Bonus and \$0/\$500 Option Package Discount. Cost of borrowing is \$0/\$0, for a total obligation of \$53,545/\$51,475. Freight (\$1,895/\$1,895) and air conditioning charge (\$100/\$100, if applicable) included. License, insurance, registration, PPSA, applicable taxes and, except in Quebec, dealer fees not included (all of which may vary by dealer and region). Dealers are free to set individual prices. <sup>o</sup>Registered trademark of The Bank of Nova Scotia. RBC and Royal Bank are registered trademarks of Royal Bank of Canada. TD Auto Finance is a registered trademark of The Toronto-Dominion Bank. <sup>o</sup>Offers are valid toward the retail purchase of an eligible new or demonstrator in stock 2019 Sierra Double Cab delivered in Canada between December 3 and January 2, 2020. Up to 25% of MSRP Cash Purchase Credit is a manufacturer to dealer incentive (tax exclusive), valid toward retail cash purchases only on select 2019 models in stock. Not compatible with special lease and finance rates. By selecting lease or finance offers, consumers are foregoing this credit which will result in higher effective cost of credit on their transaction. Credit is calculated on vehicle MSRP (which excludes vehicle freight), excluding any dealer-installed options. Credit value will vary with model purchased; models receiving up to 25% of MSRP Cash Purchase Credit are: Sierra 1500 Limited. <sup>o</sup>Offer available to qualified retail customers in Canada for vehicles purchased and delivered between December 2—January 3, 2020. Lease based on suggested retail price of \$34,288, towards the lease of an eligible 2020 Terrain SLE FWD Elevation. Bi-weekly payment is \$185 for 48 months at 1% lease rate (1% APR) on approved credit to qualified retail customers by GM Financial. The \$93 weekly payment is calculated by dividing the bi-weekly payments. Payments cannot be made on a weekly basis. Equivalent weekly payments are for informational purposes only. Annual kilometer limit of 20,000 km, \$0.16 per excess kilometer. \$0 down payment required. Payment may vary depending on down payment trade. Total obligation is \$19,175. Taxes, license, insurance, registration and applicable fees, levies, duties and, except in Quebec, dealer fees (all of which may vary by dealer and region) are extra. Option to purchase at lease end is \$16,115. Factory order may be required. <sup>o</sup>Safety or driver assistance features are no substitute for the driver's responsibility to operate the vehicle in a safe manner. The driver should remain attentive to traffic, surroundings and road conditions at all times. Visibility, weather, and road conditions may affect feature performance. Read the vehicle Owner's Manual for more important features and information. <sup>o</sup>Whichever comes first. Limit of four complimentary Lube-Oil-Filter services in total. Fluid top-offs, inspections, tire rotations, wheel alignments and balancing, etc., are not covered. See the Warranty Booklet or your dealer for details. <sup>o</sup>Whichever comes first. See your dealer. <sup>o</sup>Visit onstar.ca for vehicle availability, coverage maps, details and system limitations. Service connectivity vary by model and conditions as well as geographical and technical restrictions. 4G LTE service available in select markets. Requires active connected vehicle services and a data plan to access the vehicle's built-in Wi-Fi hotspot. Accessory Power must be active to use the Wi-Fi hotspot. Data plans provided by AT&T or its local service provider. Credit card is required for purchase.