

MILTON'S #1 VOLUME DEALER... AGAIN

WWW.HUNTCHRYSLERFIAT.CA

HUNT CHRYSLER FIAT

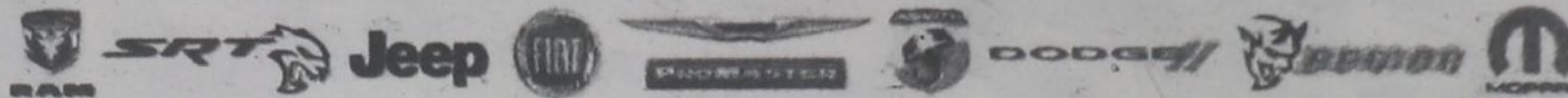
WHATEVER IT TAKES!



GARY



ROBBIE



CALL: (905) 876-2580 | TEXT US: (647) 360-9228

2019 RAM 1500 SPORT CREW CAB 4X4 HEMI - LEASE!



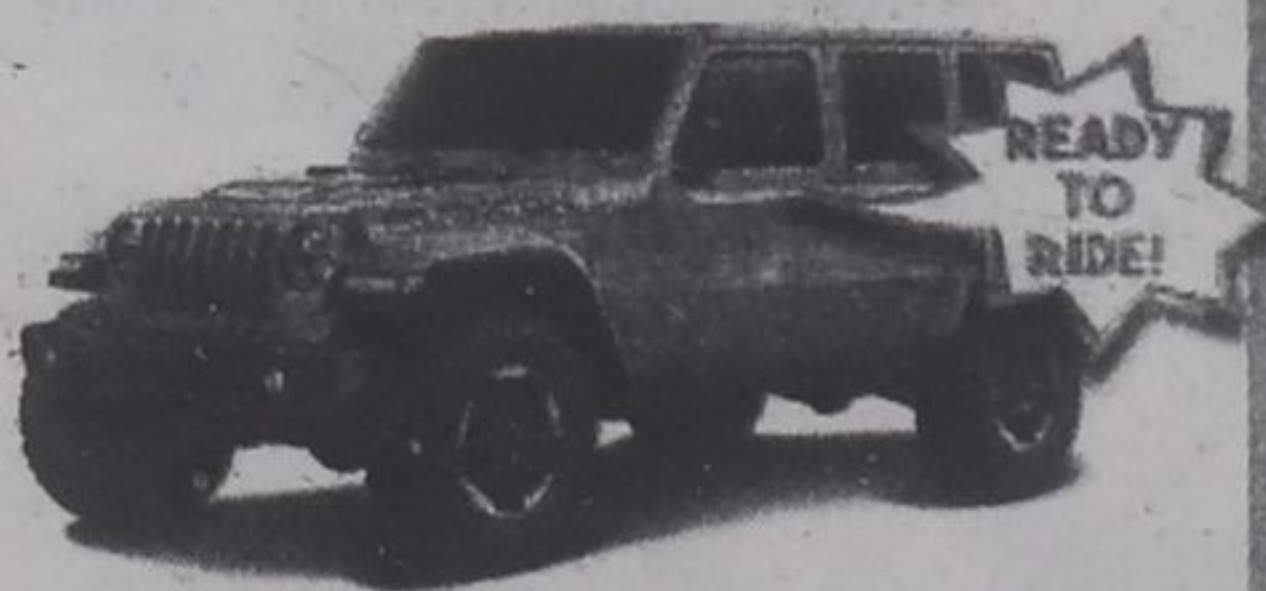
\$2,500 DOWN!

DT44 - SPORT HOOD, 9 AMP SPEAKERS, HTD SEATS, HTD WHEEL, CARPLAY, ANDROID AUTO & MORE!!!

\$49,685 ^{HST} ^{+LIC}

\$121 / 3.99% / 42

2019 JEEP WRANGLER UNLIMITED RUBICON 4X4 JL



READY TO RIDE!

F.O - 4X4, CARPLAY, GOOGLE, V6, 7" TOUCHSCREEN, PUSH START, CAMERA & MUCH MORE!!!

\$46,987 ^{HST} ^{+LIC}

\$138 / 4.99% / 96

2019 JEEP CHEROKEE TRAILHAWK 4X4



ASK ABOUT 0%!

DJ30 - NAV, SAFETY/TEC GROUP, COMFORT, LEATHER, 3.2L PENTASTAR & MORE!!

\$35,985 ^{HST} ^{+LIC}

\$106 / 4.99% / 96

2018 DODGE GRAND CARAVAN SXT PREMIUM PLUS



SAVE UP TO 35%

EG79 - STOW N GO, NAV, POWER DOORS, DVD ENTERTAINMENT, IN STOCK READY TO HO HO HO!!

\$30,951 ^{HST} ^{+LIC}

\$91 / 4.99% / 96

2018 RAM 1500 CREW CAB SLT 4X4 DIESEL!!!



7 IN STOCK!

ET414 - DIESEL, 4X4, CAMERA, REMOTE START, TOW PACKAGE, BLUETOOTH & MUCH MUCH MORE!!!

\$41,993 ^{HST} ^{+LIC}

\$124 / 4.99% / 96

2018 JEEP GRAND CHEROKEE UPLAND - LEASE!



\$2,500 DOWN

EJ246 - SUNROOF, BLACKOUT, NAVIGATION, 3.6L PENTASTAR & MUCH MORE!!!

\$39,999 ^{HST} ^{+LIC}

\$128 / 7.99% / 54

2018 JEEP COMPASS TRAILHAWK 4X4



NEW COMPASS!

EJ332 - LEATHER-FACED SEATS, NAVIGATION, HEATED SEATS, REMOTE START & MUCH MORE!!!

\$30,796 ^{HST} ^{+LIC}

\$91 / 4.99% / 96

2018 JEEP WRANGLER UNLIMITED SAHARA JK 4X4



4X4 MAHAC!

EJ207 - NAVIGATION, REMOTE START, BLUETOOTH, SIRIUS RADIO & MORE!!

\$39,950 ^{HST} ^{+LIC}

\$118 / 4.99% / 96



500 BRONTE STREET S., MILTON, ON
EMAIL: SALES@HUNTCHRYSLER.COM

2019 RAM STK#DT37/2018 GRAND CHEROKEE STK #EJ246 LEASE PAYMENTS INCLUDE ALL FACTORY CASH BACK & REBATES. 2019 RAM C.O.B @ 1.99% OVER 42 MTH TERM \$2,825.90/ 2018 GRAND CHEROKEE C.O.B @ 2.99% OVER 48 MTH TERM \$3,753.55. EXCEEDING KMS ALLOWED 0.16 CENTS PER KM. RAM 63,000KMS/ CHEROKEE 72,000KMS. NO BUYBACK REQUIREMENTS. SUBJECT TO LEASING COMPANY APPROVAL. ALL MONTHLY PAYMENT SALE PRICES INCLUDED FACTORY CASH BACKS & REBATES. HST & LIC FEE EXTRA. BORROWING 30,000 OVER 96 MTH TERM WEEKLY. PAYMENTS C.O.B \$6,175.36 SUBJECT TO BANK APPROVAL.

MILTON'S #1 VOLUME DEALER... AGAIN

WWW.HUNTCHRYSLERFIAT.CA

WWW.HUNTCHRYSLERFIAT.CA

MILTON'S #1 VOLUME DEALER... AGAIN

MILTON'S #1 VOLUME DEALER... AGAIN

WWW.HUNTCHRYSLERFIAT.CA