

GIVING SPIRIT



Melissa L. Coulson photo

The staff at Melissa L. Coulson, CPA, CA, LPA gather around the hundreds of donated items they collected during their first ever food drive in support of the Milton Salvation Army food bank.

WHAT'S ON THIS WEEKEND

1

CHRISTMAS ACTIVITIES AT THE FARM

When: Saturday, Dec. 29 from 9 a.m.-5 p.m.
Where: Springridge Farm (7256 Bell School Line, Milton, Ont., L9T 2Y1).
More Info: \$6.

2

ELF THE MUSICAL JR.

When: Saturday, Dec. 29 at 7:30 p.m. and Sunday, Dec. 30 at 2 p.m.
Where: FirstOntario Arts Centre Milton (1010 Main St. E., Milton, Ont., L9T 6H7).
More Info: This hilarious fish-out-of-water comedy follows Buddy the Elf, as he embarks on a journey to New York City to find his family and to discover his true identity. Tickets: \$25, Senior/Child: \$20. Price includes box office charge and HST.

3

VICTORIAN CHRISTMAS

When: Saturday, Dec. 29 and Sunday, Dec. 30 from 9 a.m. - 5 p.m.
Where: Bronte Creek Provincial Park (1219 Burloak Dr., Oakville ON, L6M 4J7)
More Info: Take a step back in time to the year 1900 to visit a Victorian homestead during the Christmas season. Participation included in daily vehicle permit: \$17 per car.

4

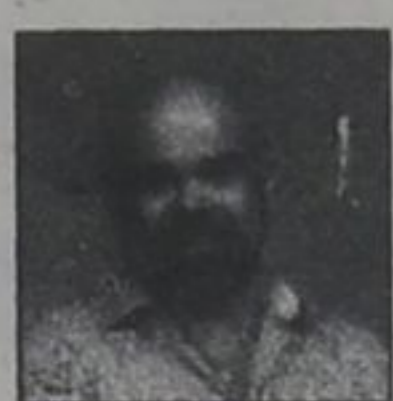
NEW BOOK RELEASE: AWAKEN YOUR INNER LEADER

When: Sunday, Dec. 30 from 2 - 5 p.m.
Where: A Different Drummer Books (513 Locust St., Burlington, Ont., L7S 1V3)
More Info: Edita Atteck talks about her new book on how to transform stress, develop emotional mastery and thrive.

5

WINTER LIGHTS AT THE ROCK

When: Sunday, Dec. 30 from 6 - 9 p.m.
Where: Royal Botanical Gardens - Rock Garden (1185 York Blvd., Burlington, Ont., L0R 2H9)
More Info: Thousands of festive lights lead you through a winter wonderland of charming Christmas melodies, festive sips and bites and the Escarpment Train Exhibit. \$15.



Chief Librarian's Remarks

On behalf of all of us here at Milton Public Library, I'd like to wish you a very Happy Holiday season!

As we close the chapter on 2018, I'd like to take a moment to thank all of you for the amazing year we've had here at MPL and the warm welcome I received as I transitioned into the Chief Librarian role this July.

As we turn the page into 2019, we are looking forward to bringing to you a host of new and exciting programs, events and library resources.

We are also thrilled to be opening the new Sherwood branch to better serve our community and expand the resources available. Located on the north side of Main Street West, it will be part of the shared Sherwood Community Centre.

Another exciting year is ahead for us at MPL. Wishing you all health and happiness as we move into 2019!

Thanks, Mark

@ your library® What's On



LAURIER
Inspiring Lives.



LAURIER ALUMNI
For Life.

Laurier Milton Lecture Series

WEDNESDAY, DECEMBER 12 @ FIRSTONTARIO ARTS CENTRE MILTON
7:00 PM - 8:30 PM (DROP-IN)

The Role of Allies in Canada's Reconciliation: A Few Thoughts

Presented by Erin Hodson, Laurier's Indigenous Curriculum Specialist

Canada's reconciliation process has been one of fear, excitement, missteps, stumbles and victories. As Indigenous peoples, we are fairly sure of our role in this process. But what about non-Indigenous Canadians? Erin Hodson has some thoughts ...

For more information and to subscribe to the eNewsletter visit: www.mpl.on.ca/programs-and-events/laurier-milton-lectures



Celebrate Family Literacy Day with a special visit from Dog Man!

SATURDAY, JANUARY 26 | BEATY BRANCH
10:00 AM - 12:00 PM (DROP-IN)

Children and their caregivers are invited to drop-in to Beaty Branch to celebrate Family Literacy Day. Enjoy stories, songs, activities, a scavenger hunt, photo booth fun and crafts! The one and only Dog Man will be on hand for you to snap some pics with.

Upcoming Holiday Closures

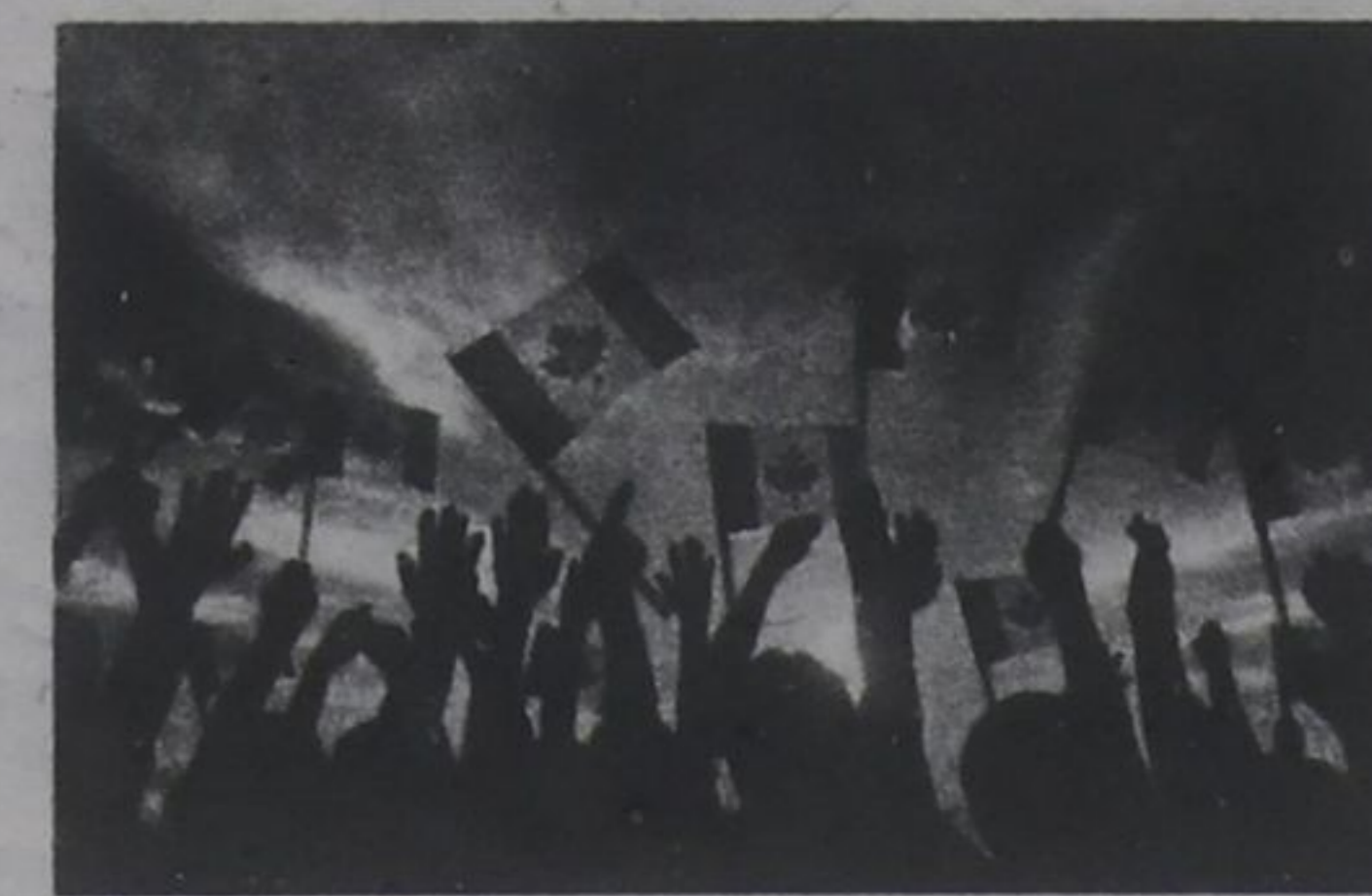
- Dec 31 closes at 12:30pm
- January 1, 2019 (New Year's Day)

Canadian Citizenship Workshop

TUESDAY, JANUARY 29
5:00 - 7:30 PM | BEATY BRANCH

This program includes practice tests, reviewing your application online and more. Brought to you through a partnership between Milton Public Library and Halton Multicultural Council (funded by CIC).

Please register through Halton Multicultural Council online or with Jacky at 905.464.3222



SUBSCRIBE TO MPL'S ENEWSLETTER:

www.mpl.on.ca/publications