

WE WANT YOU AT THE **HAMILTON**

SEE this job ad for a part-time opportunity
PREPARE a resume with your skills and qualifications
EMAIL your resume to qballa@metroland.com
COME join an amazing team today!

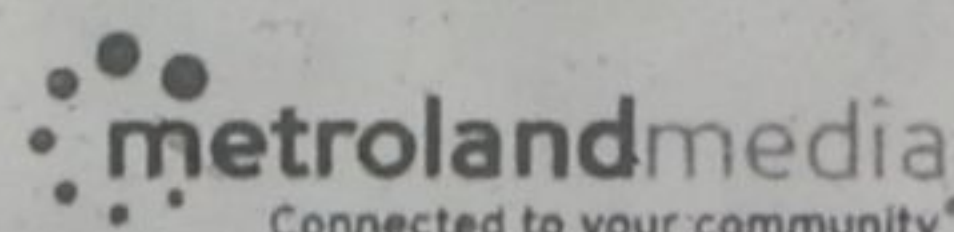


Hiring Now for CUSTOMER SERVICE REPRESENTATIVE
 ** PART TIME POSITIONS ARE AVAILABLE IMMEDIATELY **

25-30 hours/week PLUS MONTHLY INCENTIVES ARE GIVEN BASED UPON PERFORMANCE
 \$14.00/hour

WHAT WE'RE LOOKING FOR:

- Previous inbound and outbound calling experience an asset.
- Proficient with Microsoft Word, Excel, PowerPoint and Outlook.
- Strong written and verbal communication and competent listener.
- Successfully handle confidential information and use appropriate discretion.
- Ability to excel in a fast-paced, deadline driven and demanding environment with strong attention to detail.



Maple Grove Home Hardware

Now hiring Full-Time CSR.

511 Maple Grove Dr. Oakville, ON 905-338-0284

Scratch Pad

General Help

SMALL ENGINE MECHANIC



Experienced Small Engine Mechanic required immediately. Please apply with resume in person to: ADAMS RENT-ALL INC 334 Guelph St, Georgetown, ON L7G 4B5 OR Fax to: 905-877-0159 Attn: Human Resources Dept.

WAREHOUSE WORKERS Load / Unload trucks by hand. Cold & Dry storage. \$20/hr+ Em: containers2work@gmail.com

Classifieds Get Results 905.632.4440

To book your Career Opportunity Call: 1-800-263-6480 or Email: classifieds@metroland.com

General Help

General Help

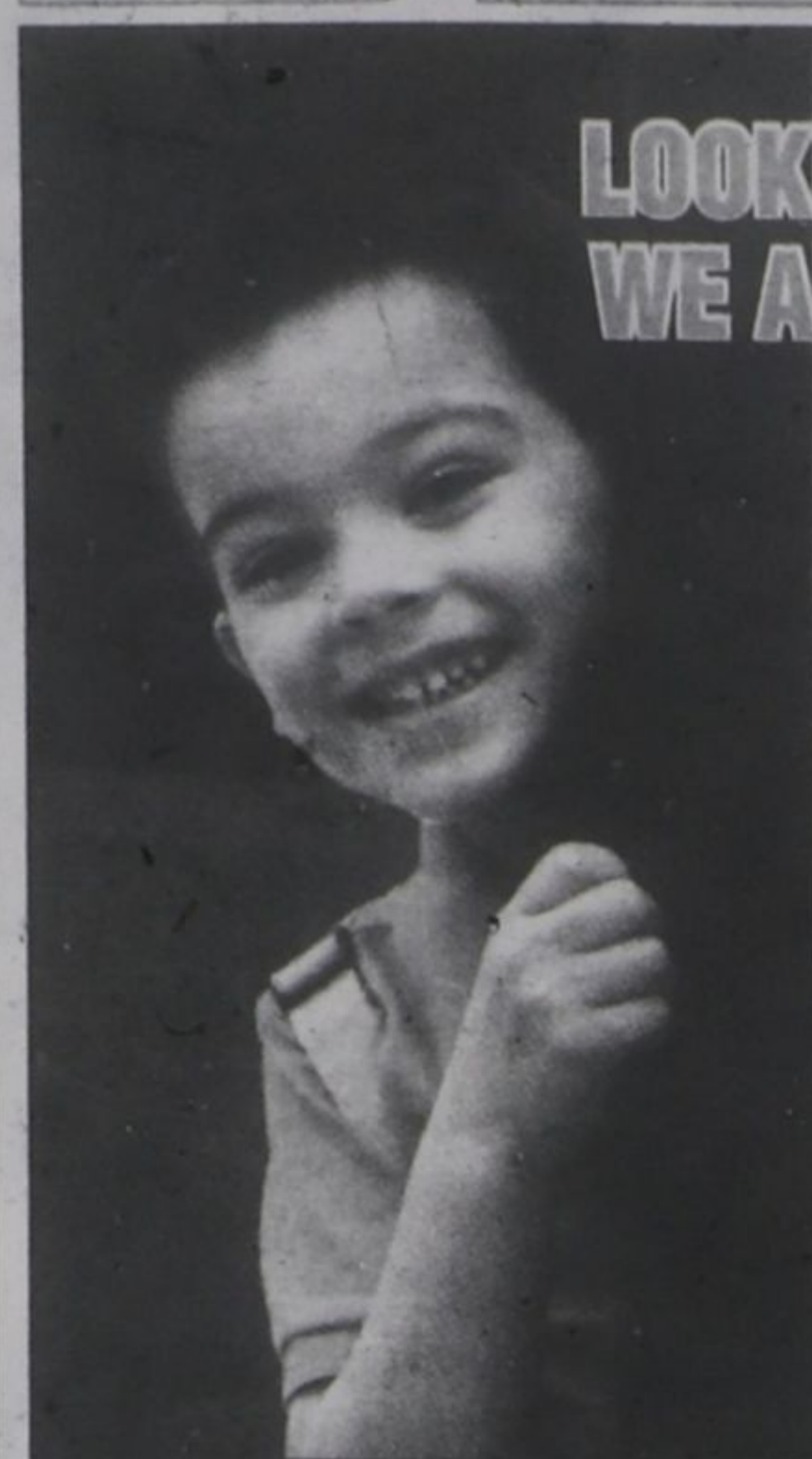
General Help

General Help

General Help

Restaurants/Hospitality

LOOKING FOR A CHANGE? WE ARE HIRING DRIVERS.



AM & PM Runs Available HAVE THE REST OF YOUR DAY FREE PART-TIME SCHOOL BUS ROUTES

- FREE PROFESSIONAL TRAINING
- WELL MAINTAINED FLEET
- FRIENDLY STAFF
- ADDITIONAL WORK AVAILABLE
- COMPETITIVE WAGES
- EMPLOYEE INCENTIVE PROGRAM

ROUTES NOW AVAILABLE Burlington, Oakville, Milton and Flamborough



Ontario's largest privately owned school busing company

Burlington 905-333-4047 | 1-888-749-1515 driveforus@attridge.com

LOOKING FOR WORK?



WALK-IN INTERVIEWS FOR PART-TIME WORK

Come in Mondays from 2pm-4pm and you might be leaving with your NEXT JOB!

COME TO OUR LOCATION 901 GUELPH LINE • BURLINGTON, ONTARIO L7R 3N8 (CORNER OF HARVESTER & GUELPH LINE)

BRING YOUR RESUME AND 2 REFERENCES **STUDENTS WELCOME**

WE ARE CURRENTLY HIRING Assembly Line Team Members, Operators And Skidders

The Following Shifts: Days, Afternoons, Midnights and Weekend SHIFTS AVAILABLE:

- Day Shift: 8am to 4pm Monday, Tuesday, Wednesday and Thursday (possibility) and Friday
- Afternoon Shift: 4pm to 12am Monday, Tuesday, Wednesday (possibility) and Thursday 4pm to 8pm Friday
- Midnight Shift: 12am to 8am Saturday, Sunday, Monday, Tuesday & Wednesday (possibility)
- Weekend Shift: 8am to 8pm Saturday and Sunday

YOU COULD BE WORKING WITHIN 2 BUSINESS DAYS!

Metroland is committed to accessibility in employment and to ensuring equal access to employment opportunities for candidates, including persons with disabilities. In compliance with AODA, Metroland will endeavour to provide accommodation to persons with disabilities in the recruitment process upon request. If you are selected for an interview and you require accommodation due to a disability during the recruitment process, please notify the hiring manager upon scheduling your interview.

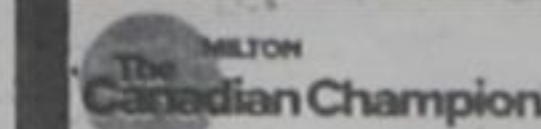
Summer in The Rockies

Seasonal resort in Jasper, AB requires energetic staff with positive attitude. Experience not necessary. Positions: Housekeepers, Night Audit, Front Desk, Retail, Restaurant, Kitchen, Maintenance, Front Desk Manager. Low cost staff accom. Start in May, Work available to Oct 20. Email: myjob@sunwapta.com Web: bit.ly/jasper-jobs

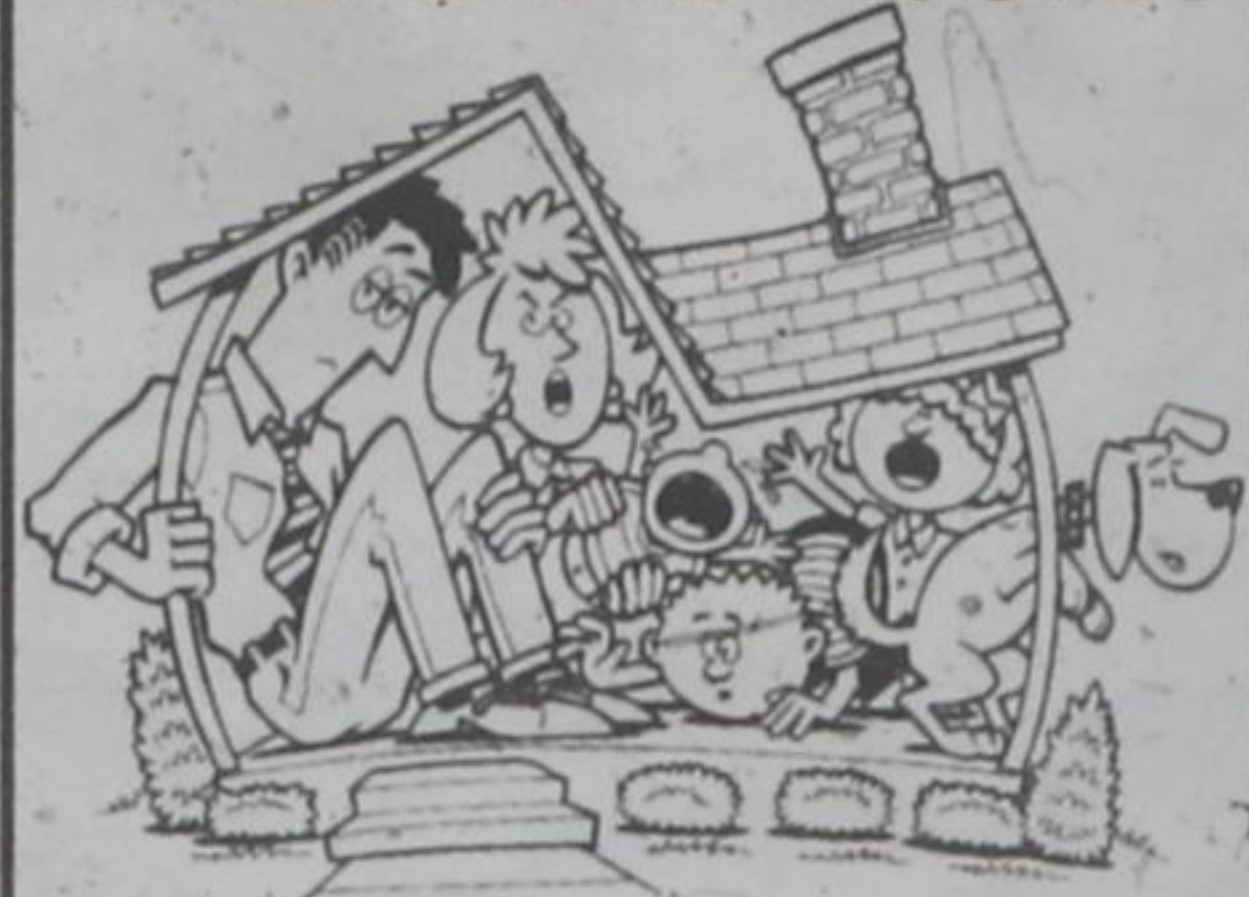
Health Care/Medical MEDICAL RECEPTIONIST

Looking for FT/PT approx 30hrs/wk medical receptionist. Experience working on practice solutions software (ps) strong verbal communication and flexibility Please email lynn@walkersmedical.ca

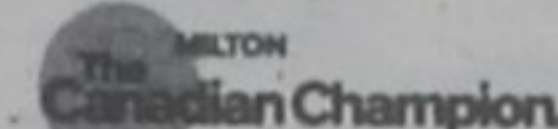
To book your classified ad call 905.632.4440



Need More Room?



HOUSES • TOWNHOMES • DUPLEXES CONDOMINIUMS • APARTMENTS BUY • SELL • RENT Check out the Classifieds! 905-632-4440



Reuse Reduce

Recycle

